

DRAINAGE CONCEPT

MEL HAMBELTON 2ND ADDITION

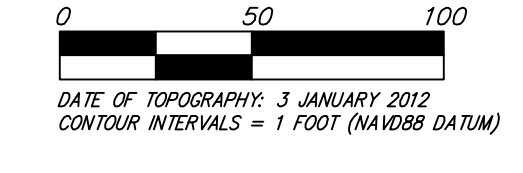
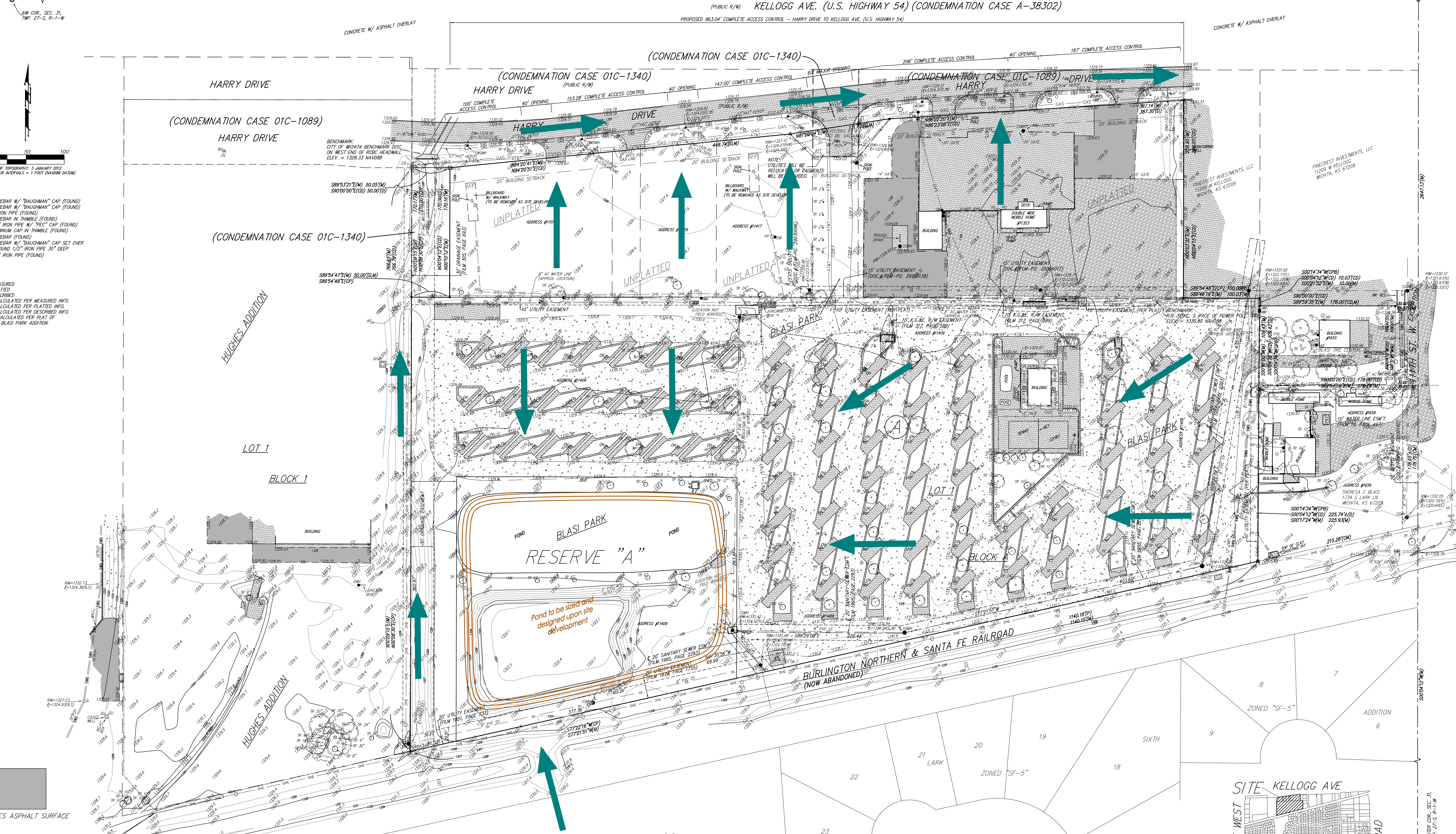
WICHITA, SEDGWICK COUNTY, KANSAS

(PUBLIC R/W) KELLOGG AVE. (U.S. HIGHWAY 54) (CONDEMNATION CASE A-38302)

N1/4 COR., SEC. 31,
TWP. 27-S, R-1-W

N90°00'00"E (ASSUMED BASIS OF BEARINGS)

2685.29'(M)



- = #4 REBAR W/ "BAUGHMAN" CAP (FOUND)
- ▲ = #4 REBAR W/ "BAUGHMAN" CAP (FOUND)
- = 1" IRON PIPE (FOUND)
- = #5 REBAR IN TRIMBLE (FOUND)
- = 3/4" IRON PIPE W/ "PEC" CAP (FOUND)
- = ALUMINUM CAP IN TRIMBLE (FOUND)
- = #4 REBAR (FOUND)
- ⊗ = #4 REBAR W/ "BAUGHMAN" CAP SET OVER FOUND 1/2" IRON PIPE 30" DEEP
- △ = 3/4" IRON PIPE (FOUND)

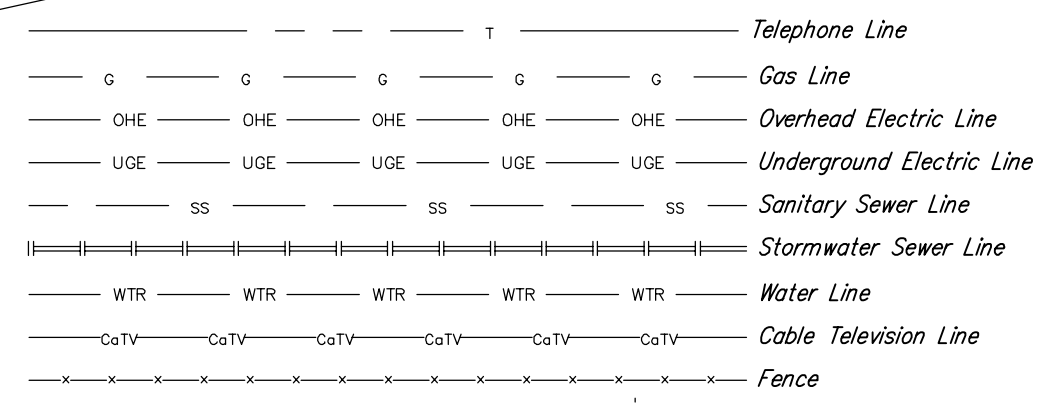
- (M) = MEASURED
- (P) = PLATTED
- (D) = DESCRIBED
- (CM) = CALCULATED PER MEASURED INFO.
- (CP) = CALCULATED PER PLATTED INFO.
- (CD) = CALCULATED PER DESCRIBED INFO.
- (CPR) = CALCULATED PER PLAT OF BLASI PARK ADDITION

INDICATES ASPHALT SURFACE

INDICATES CONCRETE SURFACE

INDICATES ROCK SURFACE

INDICATES GRAVEL/SAND SURFACE



- SD = Satellite Dish
- AC = AC Unit
- OT = Gas Test
- AB = AT&T Box
- AP = AT&T Pedestal
- CD = Cleanout
- DF = Drop Inlet
- EB = Electric Box
- EM = Electric Meter
- FH = Fire Hydrant
- HM = Gas Meter
- AM = Gas Meter
- GU = Gas Unit (Ballard)
- GV = Gas Valve
- ICV = Irrigation Control Valve - Valve Box
- LP = Light Pole
- PP = Power Pole
- Sign = Sign
- SSM = Sanitary Sewer Manhole
- Well = Cased Well
- WM = Water Meter
- WV = Water Valve
- WTR = Transformer
- Ch = Electric, Water, and Sanitary Hook-up grouping
- TR 12" = Tree with Size
- HLP = High Line Pole
- HM = Electric Hook-up
- SP = Spigot
- YH = Yard Hydrant
- SSM = Storm Sewer Manhole
- TI = Telephone Interface
- RD = Road Drain

RESERVE "A"
LARK
4TH
ADDITION
ZONED "SF-5"

RESERVE "A" IS RESERVED FOR OPEN SPACE, LAWNS, BERMS, LANDSCAPING, DRAINAGE PURPOSES AND UTILITIES AS CONFINED TO EASEMENTS.

NOTICE: VERTICAL RELIEF WAS ESTABLISHED BY A GROUND SURVEY. THE CONTOUR INTERVALS ARE 1 FT. AND RETIREMENT MARKERS DATUM. THE BENCHMARK CONTROLLING THE SURVEY IS AS INDICATED ON THE FACE OF THE SURVEY.

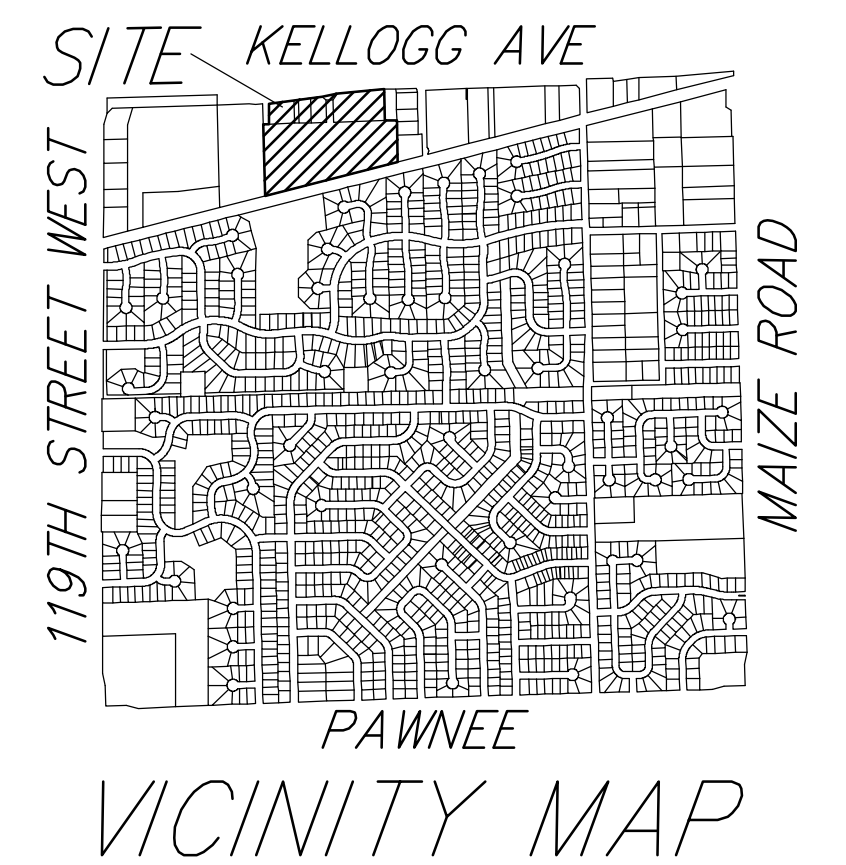
NOTE: A drainage plan has been developed for this subdivision and is on file with the City of Park City, Kansas. Drainage intent shall remain as depicted or as modified with the approval of the City Engineer of the City of Park City, Kansas. No obstructions which impede the flow of this drainage plan shall be allowed.

OWNER:
Out of the Box Investments, LLC
Attn: Phil Nightingale
11771 West Kellogg
Wichita, KS 67209
Ph: (316) 462-3673

LEGAL DESCRIPTION:
Beginning at a point on the south right-of-way line of U.S. Highway 54 as condemned in Case No. A-38302, said point being 794.5 feet west of the east line of the Northwest Quarter of Section 31, Township 27 South, Range 1 West of the Sixth Principal Meridian, Sedgwick County, Kansas; thence south parallel to the east line of said Northwest Quarter, 300 feet; thence west parallel to the south right-of-way line of said Highway, 526.5 feet; thence north parallel to the east line of said Northwest Quarter, 300 feet to the south right-of-way line of said Highway, 526.5 feet; thence east, 526.5 feet to the point of beginning, except that part taken for Highway in Case No. 010289, and TOGETHER with Lot 1, Block A, Blasi Park, Sedgwick County, Kansas, except that part taken for Highway described as commencing at a point on the south right-of-way line of U.S. Highway 54 as condemned in Case No. A-38302, said point being 794.5 feet west of the east line of the Northwest Quarter of Section 31, Township 27 South, Range 1 West of the Sixth Principal Meridian, Sedgwick County, Kansas; thence south parallel with the east line of said Northwest Quarter, a distance of 50 feet to the point of beginning, thence south parallel with the east line of said Northwest Quarter, a distance of 65 feet; thence east parallel with the south right-of-way line of said Highway, a distance of 60 feet; thence north parallel with the east line of said Northwest Quarter, a distance of 65 feet to a point on the south right-of-way line of said Highway, thence west along the south right-of-way line of said Highway, a distance of 60 feet to the point of beginning.

BENCHMARK:
City of Wichita Benchmark Disc on west end of RDC Westwood, 17.7' N. & 35.9' W. of the NW corner of Lot 1, Block A, Mel Hamblton 2nd Addition, Elev. = 1328.33 NAVD88

Railroad Spike in Power Pole,
38.6' N. & 1.0' S. of the West deflection corner south of the NE corner of Lot 1, Block A, Mel Hamblton 2nd Addition, Elev. = 1330.00 NAVD88



SITE KELLOGG AVE
VICINITY MAP
SEC. 31, T27S, R1W

DRAINAGE CONCEPT
MEL HAMBELTON 2ND ADDITION

Baughman P.A.
315 Ellis St. Wichita, KS 67211 P 316.262.7271 F 316.262.0149
ENGINEERING | SURVEYING | PLANNING | LANDSCAPE ARCHITECTURE