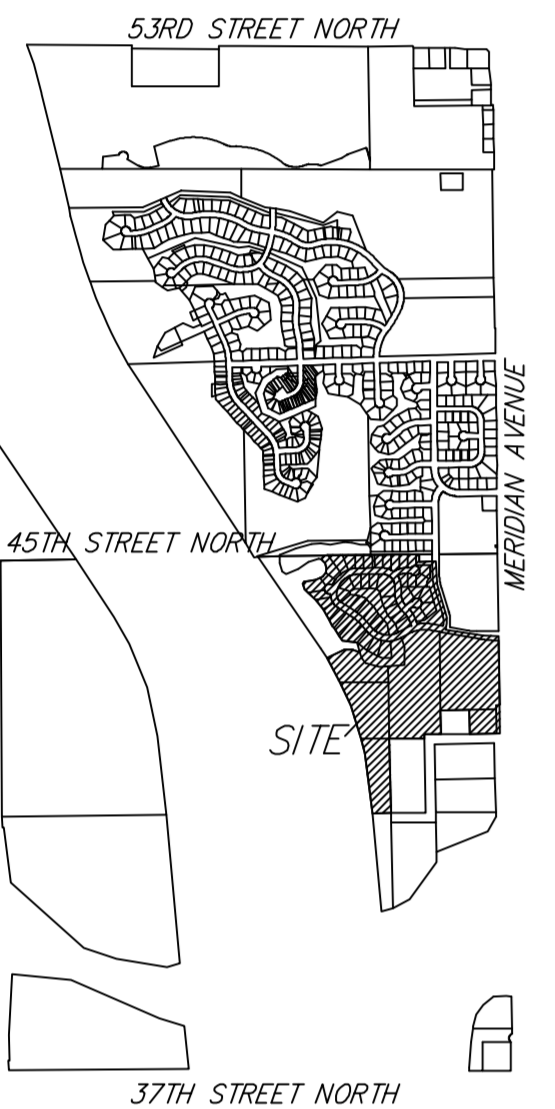


DRAINAGE PLAN

LAKESIDE AT THE MOORINGS

WICHITA, SEDGWICK COUNTY, KANSAS



DATE OF PREPARATION: 10 OCTOBER 2011
DATE OF TOPOGRAPHY: 25 SEPTEMBER 2010
CONTOUR INTERVALS = 1 FOOT
CONTOURS PROVIDED BY SEDGWICK COUNTY, KANSAS (NA1088)

DETENTION A (Bottom = 1325.0)

STAGE	INFLOW	OUTFLOW	ELEVATION
2 ft	26 cfs	0.1 cfs	1326.1
10 ft	49 cfs	1.6 cfs	1326.7
100 ft	61 cfs	3.7 cfs	1327.4

DETENTION B (Bottom = 1325.0)

STAGE	INFLOW	OUTFLOW	ELEVATION
2 ft	47 cfs	1.0 cfs	1326.4
10 ft	73 cfs	4.4 cfs	1327.1
100 ft	111 cfs	6.3 cfs	1328.1

EXISTING POND
ELEVATION AREA (sq ft)

1325	30000
1326	42000
1327	52000
1328	62000
1329	72000

EXISTING POND
ELEVATION AREA (sq ft)

1325	50000
1326	66000
1327	80000
1328	94000
1329	108000

DETENTION C (Bottom = 1325.0)

STAGE	INFLOW	OUTFLOW	ELEVATION
2 ft	49 cfs	3.5 cfs	1325.4
10 ft	77 cfs	9.0 cfs	1326.2
100 ft	122 cfs	20.0 cfs	1327.1

DETENTION E (Bottom = 1324.0)

STAGE	INFLOW	OUTFLOW	ELEVATION
2 ft	32 cfs	1.8 cfs	1325.7
10 ft	59 cfs	3.7 cfs	1326.4
100 ft	77 cfs	6.3 cfs	1327.3

EXISTING POND
ELEVATION AREA (sq ft)

1324	50000
1325	55000
1326	60000
1327	65000
1328	70000

EXISTING POND
ELEVATION AREA (sq ft)

1324	24000
1325	33000
1326	41000
1327	49000
1328	58000

DETENTION F (Bottom = 1325.0)

STAGE	INFLOW	OUTFLOW	ELEVATION
2 ft	14 cfs	0.1 cfs	1326.0
10 ft	19 cfs	3.5 cfs	1326.4
100 ft	34 cfs	12.0 cfs	1326.9

EXISTING POND
ELEVATION AREA (sq ft)

1325	22000
1326	26000
1327	28000



LEGEND

- A Basin Labels
- Proposed SWS
- Proposed SWS
- Flow Direction

NOTES: No FEMA SFHA exists on this property as of this date.

The proposed Bio-retention area / dry detention areas will be utilized for WQ, CP, and overall site detention. These areas may incorporate multiple ISS removal features. These areas will be above groundwater and will utilize infiltration into the in situ sandy soils.

Underground SWS is anticipated to be utilized on site per site development.

DRAINAGE PLAN
LAKESIDE AT THE MOORINGS

Baughman Company, P.A.
315 E 11th St. Wichita, KS 67201 P 316-262-7271 F 316-262-0149
ENGINEERING | SURVEYING | PLANNING | LANDSCAPE ARCHITECTURE