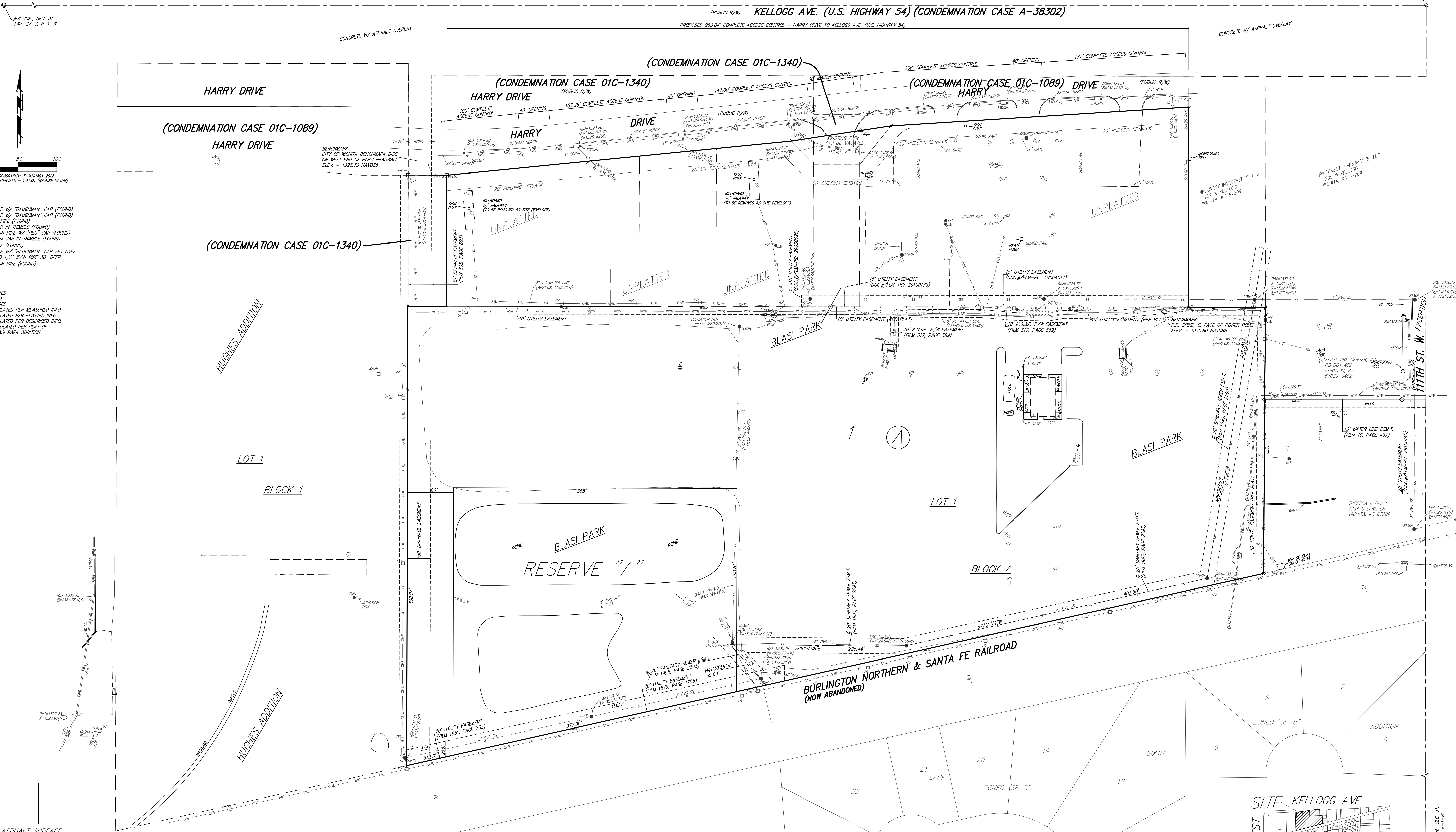


PRELIMINARY PLAT
MEL HAMBELTON 2ND ADDITION
 WICHITA, SEDGWICK COUNTY, KANSAS

(PUBLIC R/W) KELLOGG AVE. (U.S. HIGHWAY 54) (CONDEMNATION CASE A-38302)

N1/4 COR., SEC. 31,
 TWP. 27-S, R-1-W



- #4 REBAR W/ "BAUGHMAN" CAP (FOUND)
 - ▲ #4 REBAR W/ "BAUGHMAN" CAP (FOUND)
 - #1 IRON PIPE (FOUND)
 - #5 REBAR IN TRIMBLE (FOUND)
 - 3/4" IRON PIPE W/ "PEC" CAP (FOUND)
 - ALUMINUM CAP IN TRIMBLE (FOUND)
 - #4 REBAR (FOUND)
 - #4 REBAR W/ "BAUGHMAN" CAP SET OVER FOUND 1/2" IRON PIPE 30" DEEP
 - 3/4" IRON PIPE (FOUND)
- (M) = MEASURED
 (P) = PLATTED
 (D) = DESCRIBED
 (CM) = CALCULATED PER MEASURED INFO.
 (CP) = CALCULATED PER PLATTED INFO.
 (CD) = CALCULATED PER DESCRIBED INFO.
 (CPS) = CALCULATED PER PLAT OF BLASI PARK ADDITION

- INDICATES ASPHALT SURFACE
- INDICATES CONCRETE SURFACE
- INDICATES ROCK SURFACE
- INDICATES GRAVEL/SAND SURFACE

- Telephone Line
 Gas Line
 Overhead Electric Line
 Underground Electric Line
 Sanitary Sewer Line
 Stormwater Sewer Line
 Water Line
 Cable Television Line
 Fence
- PP = Power Pole
 Sign = Sign
 SSM = Sanitary Sewer Manhole
 Well = Cased Well
 WM = Water Meter
 WV = Water Valve
 XFR = Transformer
 Ch = Electric, Water, and Sanitary Hook-up grouping
 Tree with Size
- HL = High Line Pole
 HU = Electric Hook-up
 GM = Gas Meter
 GU = Gas Post (Ballard)
 YH = Yard Hydrant
 SSMH = Storm Sewer Manhole
 ICV = Ingression Control Valve - Valve Box
 TI = Telephone Interface
 RP = Road Drain

RESERVE "A"
 LARK 4TH ADDITION
 ZONED "SF-5"

NOTICE: VERTICAL RELIEF WAS ESTABLISHED BY A GROUND SURVEY. THE CONTOUR INTERVALS ARE 1 FT. AND RETIREMENT MARKERS DATUM. THE BENCHMARK CONTROLLING THE SURVEY IS AS INDICATED ON THE FACE OF THE SURVEY.

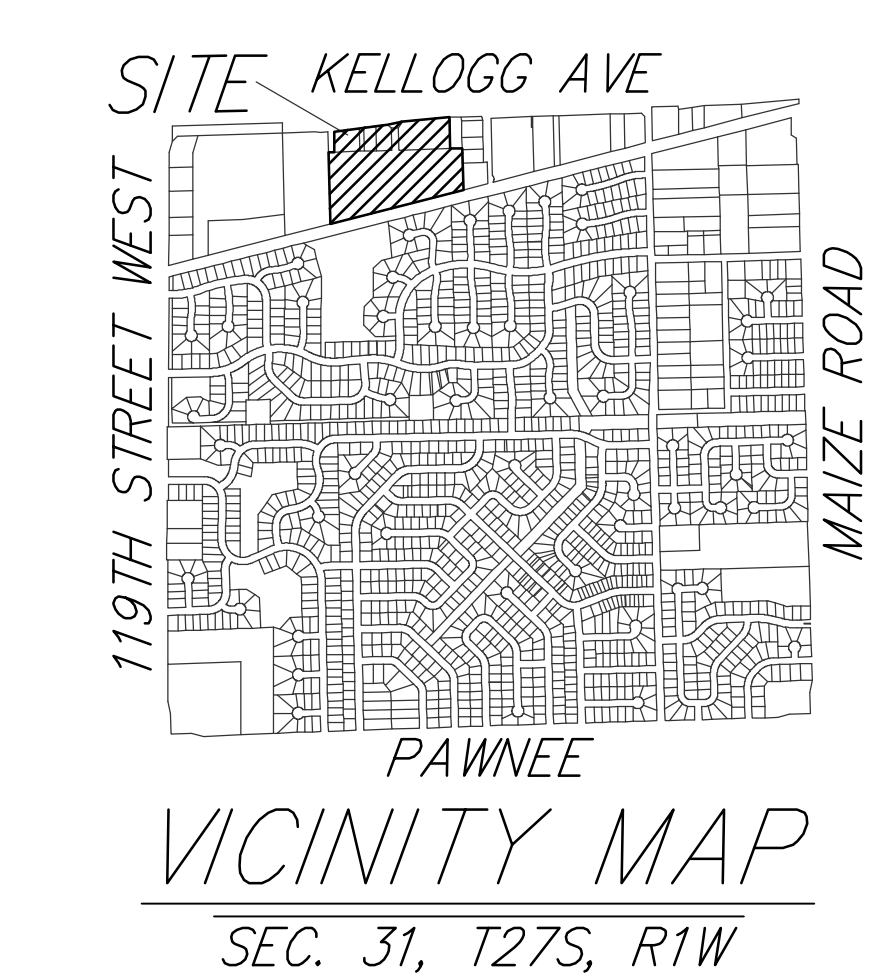
NOTE:
 A drainage plan has been developed for this subdivision and is on file with the City of Park City, Kansas. Drainage intent shall remain as depicted or as modified with the approval of the City Engineer of the City of Park City, Kansas. No obstructions which impede the flow of this drainage plan shall be allowed.

OWNER:
 Out of the Box Investments, LLC
 Attn: Phil Nightengale
 11771 West Kellogg
 Wichita, KS 67209
 Ph: (316) 462-3673

LEGAL DESCRIPTION:
 Beginning at a point on the south right-of-way line of U.S. Highway 54 as condemned in Case No. A-38302, said point being 794.5 feet west of the east line of the Northwest Quarter of Section 31, Township 27 South, Range 1 West of the Sixth Principal Meridian, Sedgwick County, Kansas; thence south parallel to the east line of said Northwest Quarter, 300 feet; thence west parallel to the south right-of-way line of said Highway, 526.5 feet; thence north parallel to the east line of said Northwest Quarter, 300 feet to the south right-of-way line of U.S. Highway 54 as condemned in Case No. A-38302, said point being 208 feet west of the east line of the Northwest Quarter of Section 31, Township 27 South, Range 1 West of the Sixth Principal Meridian, Sedgwick County, Kansas; thence south parallel to the east line of said Northwest Quarter, 300 feet; thence west parallel to the east line of said Highway, 526.5 feet; thence north, 300 feet to said south right-of-way line; thence east, 526.5 feet to the point of beginning, except that part taken for Highway in Condemnation Case No. 01C1340, TOGETHER with that part of said Northwest Quarter described as follows: Beginning at a point on the south right-of-way line of U.S. Highway 54 as condemned in Case No. A-38302, said point being 208 feet west of the east line of the Northwest Quarter of Section 31, Township 27 South, Range 1 West of the Sixth Principal Meridian, Sedgwick County, Kansas; thence south parallel to the east line of said Northwest Quarter, a distance of 50 feet to the point of beginning; thence south parallel to the east line of said Northwest Quarter, a distance of 65 feet; thence east parallel to the south right-of-way line of said Highway, a distance of 60 feet; thence north parallel to the east line of said Northwest Quarter, a distance of 65 feet to a point on the south right-of-way line of said Highway; thence west along the south right-of-way line of said Highway, a distance of 60 feet to the point of beginning.

BENCHMARK:
 City of Wichita Benchmark Disc on west end of RDC Heavens, 17.7' N. & 35.9' W. of the NW corner of Lot 1, Block A, Mel Hamblton 2nd Addition. Elev. = 1328.33 NAVD88

Railroad Spike in Power Pole:
 38.6' N. & 1.0' S. of the West deflection corner south of the NE corner of Lot 1, Block A, Mel Hamblton 2nd Addition. Elev. = 1330.00 NAVD88



MEL HAMBELTON 2ND ADDITION
 SEC. 31, T27S, R1W

Baughman Company, P.A.
 315 E. 10th St., Wichita, KS 67211 P: 316.262.7271 F: 316.262.0149
 ENGINEERING | SURVEYING | PLANNING | LANDSCAPE ARCHITECTURE