

Runyan, Sara

Subject: FW: Mead Middle School Addition
Attachments: Drng plan Mead Middle School.pdf

From: Lindebak, Scott
Sent: Tuesday, March 20, 2012 3:25 PM
To: 'Will Clevenger'; 'Ken Lee'
Cc: Davidson, Tim; Strahl, Neil; Runyan, Sara
Subject: RE: Mead Middle School Addition

Will, Ken,

In reviewing the attached drainage plan, the City of Wichita has the following comments:

1. Existing stormwater sewer size, flows, and location in the adjacent public street right-of-way shall be shown on the drainage plan.
2. A subdivision drainage plan checklist shall be submitted with the review of the plan.
3. The subdivision includes more than one watershed, with portions of the site draining to the west, north, and south, which drains to separate City storm systems. Discharges to each watershed should be delineated on the plan.
4. General Notes on the drainage plan shall be included requirements for detention, water quality, if thresholds are exceeding in accordance to Chapter 16.32 of the City Code.

Thank you

Scott

From: Will Clevenger [mailto:wclevenger@rbkansas.com]
Sent: Tuesday, March 20, 2012 1:29 PM
To: Lindebak, Scott
Subject: RE: Mead Middle School Addition

Hello Scott,

I mistakenly submitted the drainage plan with the plat copies. The planning department said they will send the drainage plan to your office. Attached is a scanned copy of the drainage plan for your use.

William K. Clevenger, L.S.
Ruggles & Bohm, P.A.
924 N. Main
Wichita, KS 67203
(316) 264-8008, Ext. 128 Office
(316) 264-4621 Fax
(316) 833-8426 Cell

Electronic files are transmitted herewith for information only. It is the responsibility of any user to verify any information contained in these files.

From: Lindebak, Scott [mailto:SLindebak@wichita.gov]
Sent: Tuesday, March 20, 2012 11:45 AM
To: Strahl, Neil
Cc: Will Clevenger
Subject: RE: Mead Middle School Addition

Can Will Clevenger with RB send it to me as a pdf, since I am working from home today.

Thanks!

Scott

From: Strahl, Neil
Sent: Tuesday, March 20, 2012 11:41 AM
To: Lindebak, Scott
Subject: RE: Mead Middle School Addition

Kathy Wilson will get you copy today. We received it and treated it as the "site plan".

From: Lindebak, Scott
Sent: Tuesday, March 20, 2012 11:24 AM
To: Strahl, Neil
Subject: RE: Mead Middle School Addition

Who is submitting the plat? I have yet to receive a copy of the drainage plan.

Thanks!

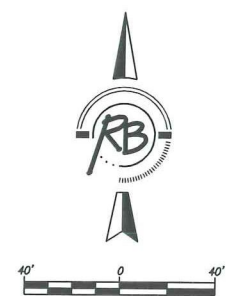
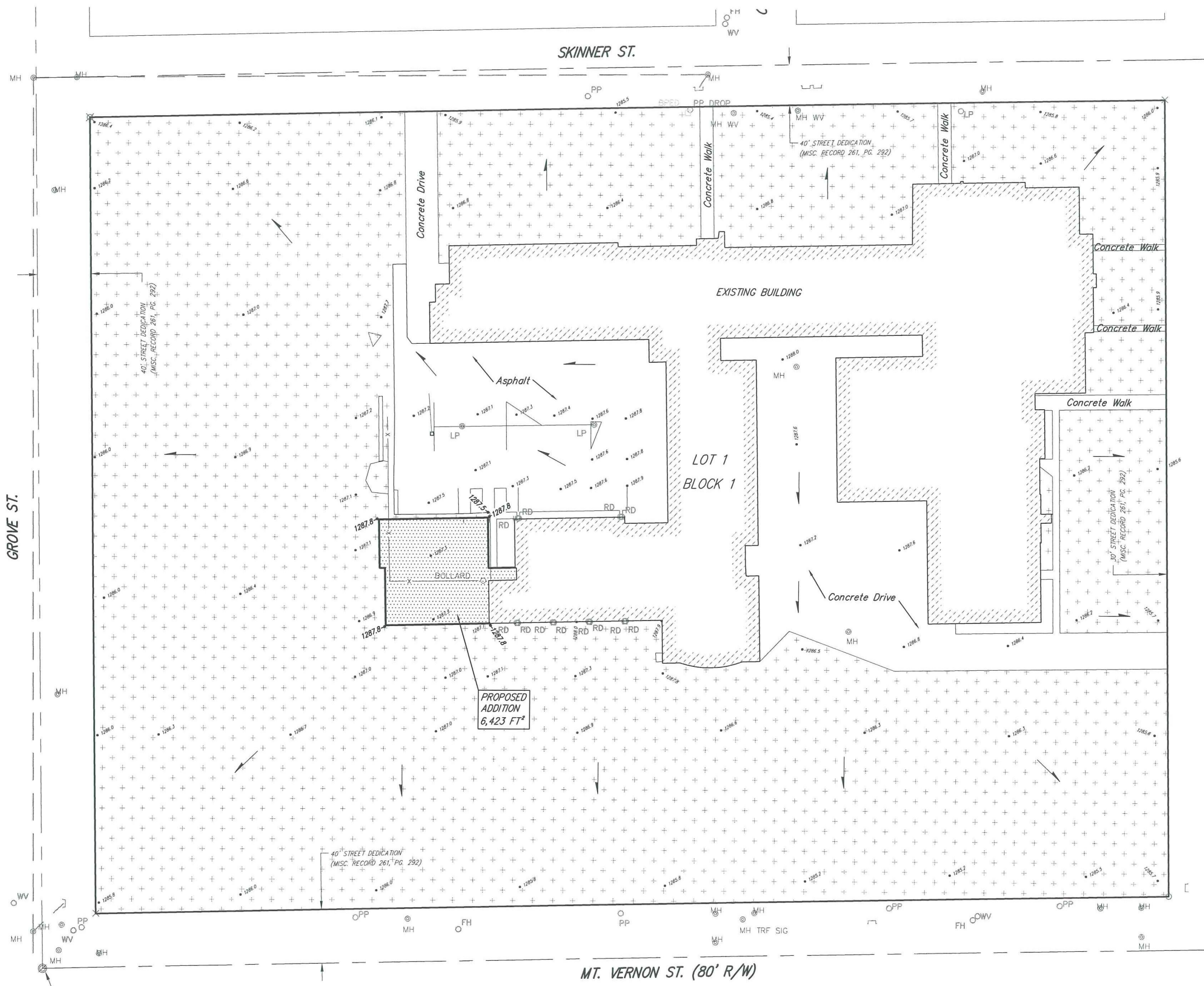
Scott

From: Strahl, Neil
Sent: Tuesday, March 20, 2012 11:17 AM
To: Lindebak, Scott
Subject: Mead Middle School Addition

- a. City Stormwater Management needs to comment on the drainage plan.

Anything new? I want to send out staff report tomorrow morning.

*Neil Evan Strahl, Senior Planner
Metropolitan Area Planning Department
Current Plans Division
City Hall, 10th Floor
455 N. Main
Wichita, KS 67202-1688
Phone: (316) 268-4459
Fax: (316) 268-4390
E-Mail: nstrahl@wichita.gov*



Drainage Calculations

EXISTING IMPERVIOUS = 155,960 FT²
 NEW IMPERVIOUS = 6,423 FT²
 TOTAL SITE AREA = 475,355 FT² (10.9 ACRES)
 EXISTING IMPERVIOUS % = 33%
 PROPOSED IMPERVIOUS % = 34%

ELANDCO SERIES SOILS

HYDROLOGIC GROUP B
 T_c = 15 MINUTES
 I_s = 4.56 in/hr
 I₁₀₀ = 7.37 in/hr

EXISTING CONDITIONS

C_s = 0.66(0.22) + 0.19(0.85) + 0.15(0.87) = 0.44
 C₁₀₀ = 0.66(0.41) + 0.19(0.93) + 0.15(0.89) = 0.58
 Q_s = 0.44(4.56)(10.9) = 21.9 cfs
 Q₁₀₀ = 0.58(7.37)(10.9) = 46.6 cfs

PROPOSED CONDITIONS

C_s = 0.65(0.22) + 0.20(0.85) + 0.15(0.87) = 0.44
 C₁₀₀ = 0.65(0.41) + 0.20(0.93) + 0.15(0.89) = 0.59
 Q_s = 0.44(4.56)(10.9) = 21.9 cfs
 Q₁₀₀ = 0.59(7.37)(10.9) = 47.4 cfs



LEGEND

PERVIOUS AREAS

**MEAD MIDDLE SCHOOL
 DRAINAGE PLAN
 WICHITA, KANSAS**

	Ruggles & Bohm, P.A. Engineering, Surveying, Land Planning		DESIGN: KWL DRAWN: MLP REVIEW:	PROJECT NUMBER:
	924 North Main Wichita, Kansas 67203 www.rbkansas.com		(316) 264-8008 (316) 264-4621 fax E-mail: info@rbkansas.com	DATE: Mar. 8, 2012