

Runyan, Sara

From: Lindebak, Scott
Sent: Wednesday, April 04, 2012 10:44 PM
To: Runyan, Sara
Subject: FW: Sanddress Lake Drainage Concept
Attachments: Sanddress Drainage Concept.pdf

Sara, Please save scan of this email and drainage concept in the LF subdivision folder file.

Thanks!

Scott

From: Lindebak, Scott
Sent: Wednesday, April 04, 2012 10:43 PM
To: Trevor Kurth'; Davidson, Tim
Subject: RE: Sanddress Lake Drainage Concept

Trevor, Upon review I have no concerns related to the development of residential subdivision using WQ devices prior to discharging to groundwater pit pond. I would suspect that the City of Wichita would maintain the permanent BMPs, since the structures are in-line with a public storm sewer system. As you develop the drainage plan, we will want to understand how you are going to address or identify the lakes emergency overflow. I doubt the lake will ever overflow, unless we receive an inordinate amount of rainfall during a year of high groundwater. Will the structures lowest opening be placed above an emergency overflow path to the City arterial street or other drainage path?

Thanks!

Scott

From: Trevor Kurth [mailto:tkurth@baughmanco.com]
Sent: Wednesday, April 04, 2012 11:54 AM
To: Lindebak, Scott; Davidson, Tim
Subject: Sanddress Lake Drainage Concept

Scott/Tim,

Attached is the Concept for the plat that was submitted earlier this week.

It will be a groundwater pit and we are preliminarily proposing to use Hydroguard units at every outfall before entering the lake – most of these located along the streets for maintenance access.

Let me know of questions or concerns.

Thanks.

trk

Trevor R. Kurth, P.E., CFM
Chief Water Resources Engineer

Baughman Company, P.A.

315 Ellis
Wichita, KS 67211

tkurth@baughmanco.com

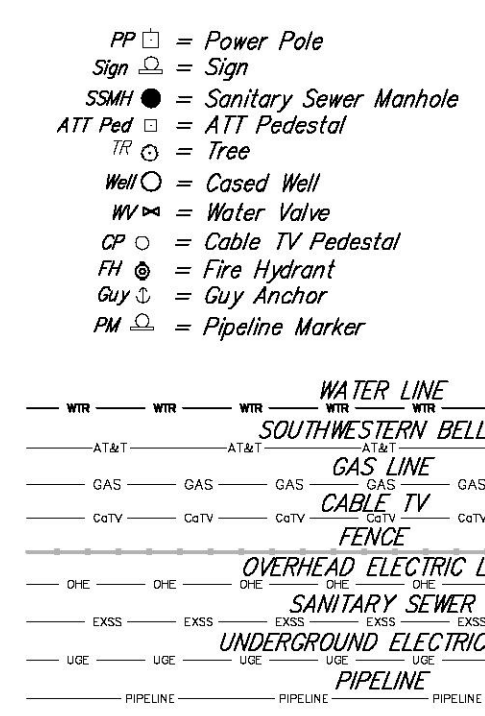
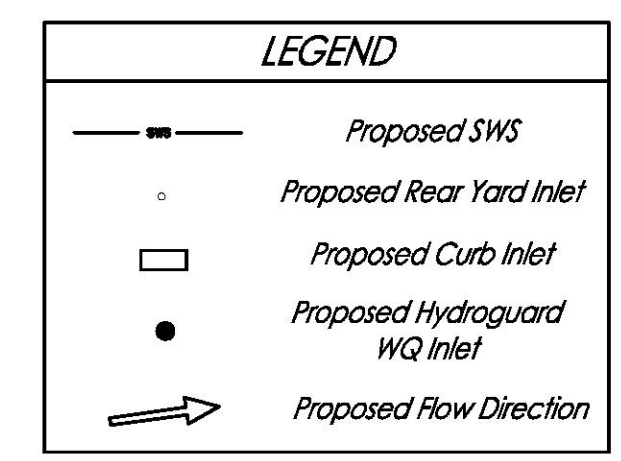
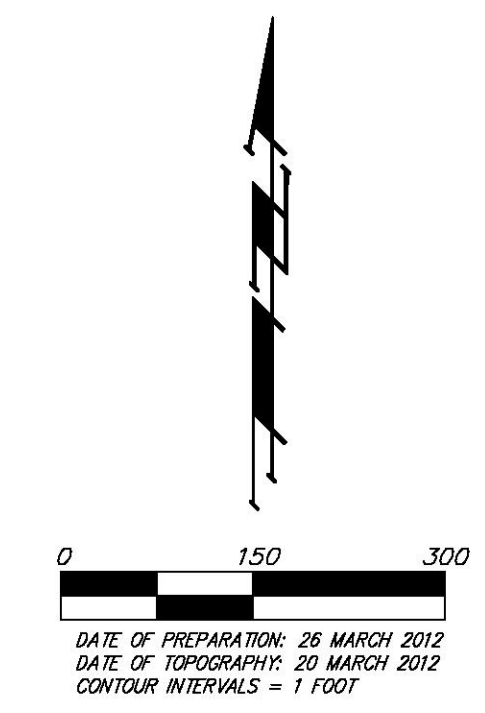
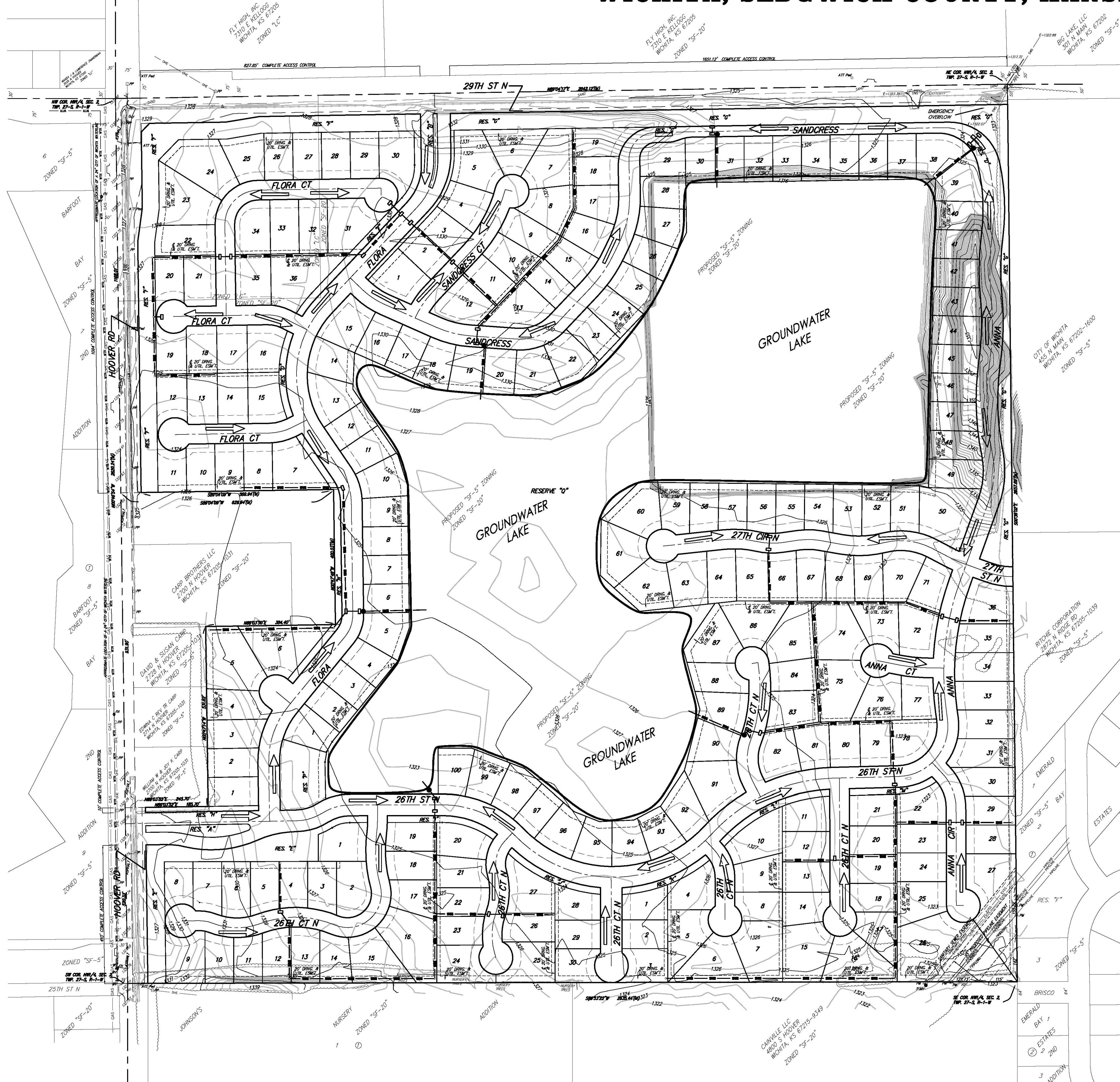
(316) 262-7271

(316) 262-0149 (FAX)

www.baughmanco.com

This transmission is intended only for the person named above and may contain privileged or confidential information. Please notify me immediately by phone or e-mail, if you have received this transmission in error. If you are not the named addressee, please destroy the original transmission and its contents. Copying, distributing, or any disclosure of its contents is prohibited and may be unlawful. Thank you for your assistance and I apologize for any inconvenience.

DRAINAGE CONCEPT
SANDCRESS LAKE
 WICHITA, SEDGWICK COUNTY, KANSAS



(M) = MEASURED
 (D) = DESCRIBED
 (P) = PLATTED

