

CVS pharmacy
 NORTHERN 13,225-SQ-FT
 CHAMFER DRUG-THRU
 STORE NUMBER: 10077
 516 V 13TH ST AND MAIZE RD
 VICTORIA, KS
 PROJECT TYPE: NEW CONSTRUCTION
 DEAL TYPE: Fee for Service/Type B
 CS PROJECT NUMBER: 064724

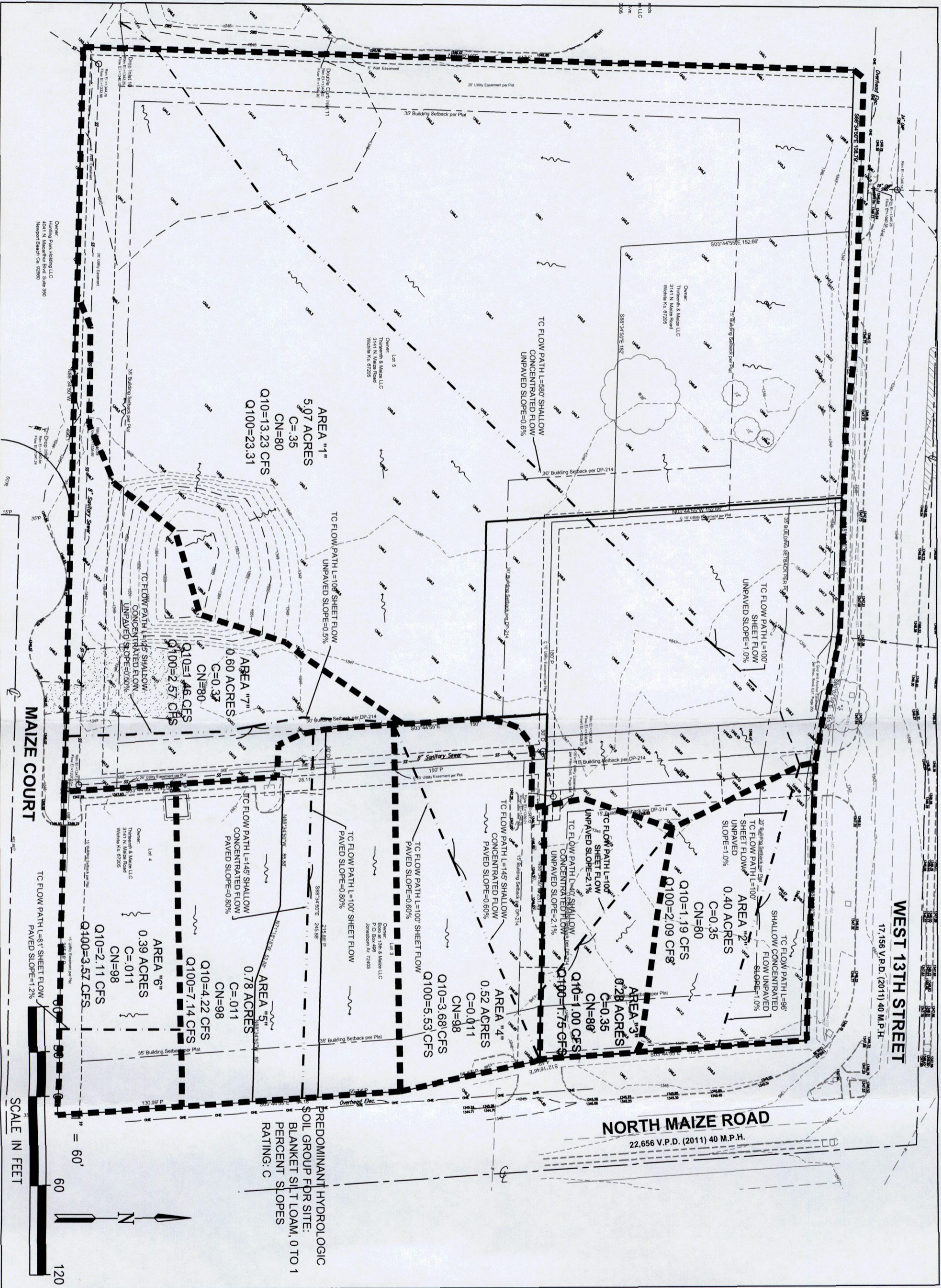
ARCHITECT OF RECORD
NORR
 ARCHITECTS ENGINEERS PLANNERS

CONSULTANT:
 PREMIER CIVIL ENGINEERING
 WARTZVILLE, MO 65258
 Phone (314) 888-7444 Fax (314) 888-7487
 Premier Civil Engineering
 Missouri State Certificate of Authority ALC0881128

DEVELOPER:
VETMEIR
 VETMEIR DR. MARKING
 20478
 PROFESSIONAL ENGINEER

REVISIONS:
 3-25-12-REVIS'D PER CITY COMMENTS

DRAWING BY: M. FOGARTY
DATE: 03/08/2012
JOB NUMBER: 113201
TITLE: POSTDEVELOPMENT CONDITIONS DRAINAGE MAP
SHEET NUMBER: SHEET 2
COMMENTS: NOT RELEASED FOR CONSTRUCTION

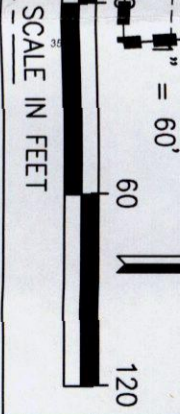


WEST 13TH STREET
17.156 V.P.D. (2011) 40 M.P.H.

NORTH MAIZE ROAD
22.656 V.P.D. (2011) 40 M.P.H.

MAIZE COURT

PREDOMINANT HYDROLOGIC
SOIL GROUP FOR SITE:
BLANKET SILTLOAM, 0 TO 1
PERCENT SLOPES
RATING: C



CVS
pharmacy
NORTHERN 13,225-RIGHT
CHAFFER DRIVE-TIFU

STORE NUMBER 10077
SVC V 13TH ST AND MAIZE RD
VICTORIA, KS
PROJECT TYPE NEW CONSTRUCTION
DEAL TYPE Fee for Service/Land/Type B
CS PROJECT NUMBER 064724

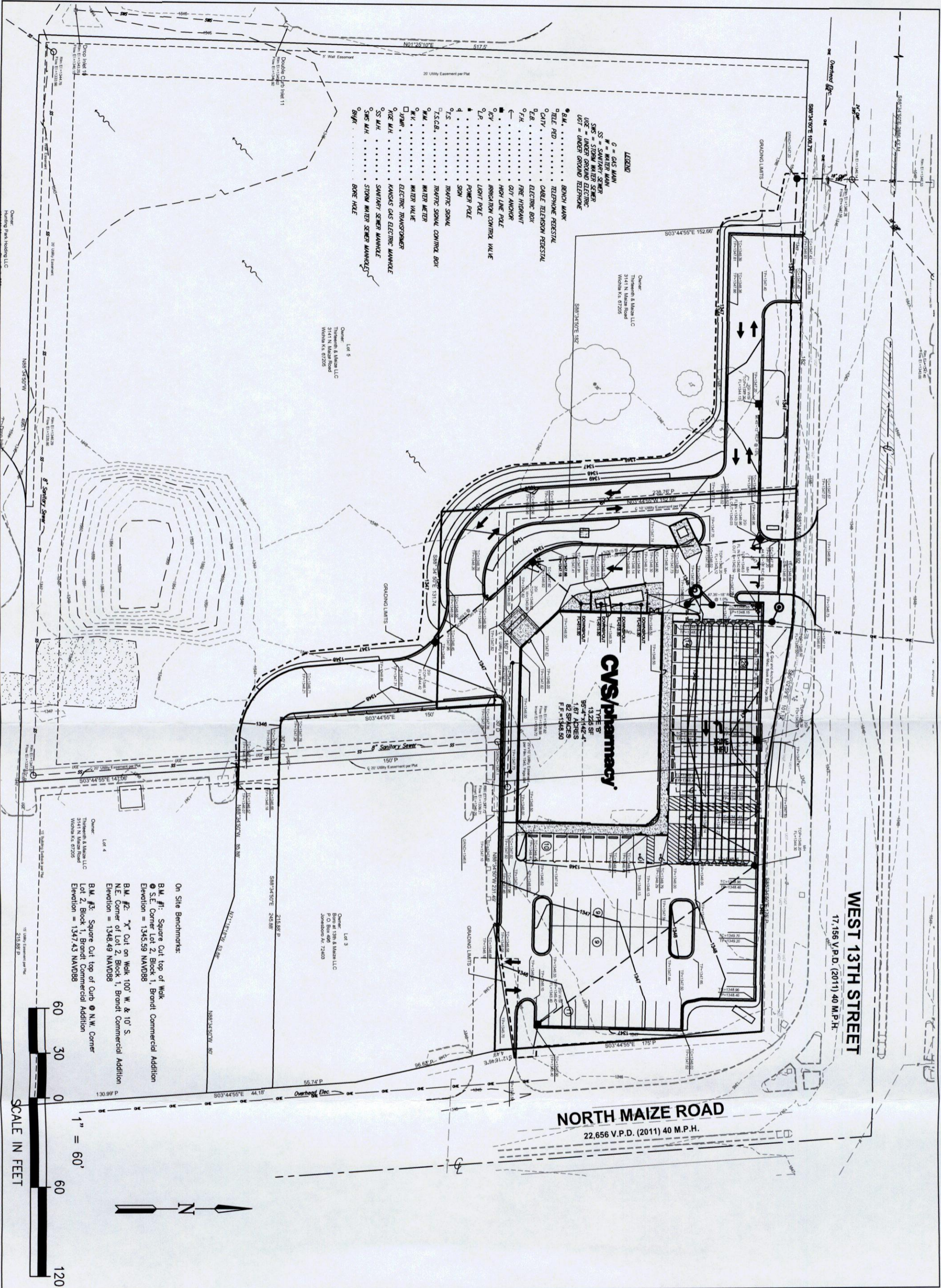
ARCHITECT OF RECORD
NORR
ARCHITECTS ENGINEERS PLANNERS

CONSULTANT:
PREMIER CIVIL
ENGINEERING
Wichita, KS
1146 Wichita Parkway, Suite 101
Wichita, MO 67224
Phone (314) 828-7444 Fax (314) 828-7487
Premier Civil Engineering
Missouri State Certificate of Authority #C00861128

DEVELOPER
VELMEIR
COMPANIES

REGISTERED PROFESSIONAL ENGINEER
STEVEN J. MARION
NO. 20422
REVISIONS
DATE: 03/08/2012

DRAWING BY: M. FOGARTY
DATE: 03/08/2012
JOB NUMBER: 113201
TITLE: EXISTING CONDITIONS DRAINAGE MAP
SHEET NUMBER: SHEET 1
COMMENTS: NOT RELEASED FOR CONSTRUCTION



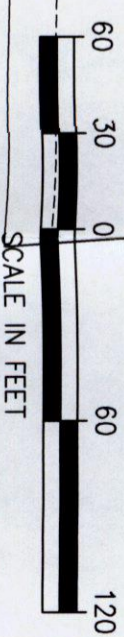
WEST 13TH STREET
17,156 V.P.D. (2011) 40 M.P.H.

NORTH MAIZE ROAD
22,656 V.P.D. (2011) 40 M.P.H.

CVS/pharmacy
TYPE B
13,225 SF
85'-4" x 142'-4"
1.67 ACRES
82 SPACES
F.F. = 1348.50

- LEGEND**
- C = GAS MAIN
 - W = WATER MAIN
 - SS = SANITARY SEWER
 - SMS = STORM WATER SEWER
 - USE = UNDER GROUND ELECTRIC
 - UGT = UNDER GROUND TELEPHONE
 - B.M. = BENCH MARK
 - TEL. FED. = TELEPHONE FEEDLINE
 - CATV = CABLE TELEVISION FEEDLINE
 - EB = ELECTRIC BOX
 - F.H. = FIRE HYDRANT
 - GUY ANCHOR
 - HIGH LINE POLE
 - IRREGULAR CONTROL VALVE
 - L.P. = LIGHT POLE
 - POWER POLE
 - SON
 - T.S. = TRAFFIC SIGNAL
 - T.S.C.B. = TRAFFIC SIGNAL CONTROL BOX
 - W.M. = WATER METER
 - WATER VALVE
 - W.V. = WATER VALVE
 - ELECTRIC TRANSFORMER
 - K.C. = KANSAS GAS ELECTRIC MANHOLE
 - S.S.M.H. = SANITARY SEWER MANHOLE
 - S.M.H. = STORM WATER SEWER MANHOLE
 - B.M. = BENCH MARK
 - BORE HOLE

- On Site Benchmarks:**
- B.M. #1: Square Cut top of Walk @ S.E. Corner Lot 2, Block 1, Brandt Commercial Addition Elevation = 1345.59 NAVD88
 - B.M. #2: "X" Cut on Walk 100' W. & 10' S. N.E. Corner of Lot 2, Block 1, Brandt Commercial Addition Elevation = 1348.49 NAVD88
 - B.M. #3: Square Cut top of Curb @ N.W. Corner Lot 2, Block 1, Brandt Commercial Addition Elevation = 1347.43 NAVD88



CVS pharmacy
NORTHERN R.225 RIGHT CHAMBER DRIVE-TIFU
STORE NUMBER 10077
SVC V 13TH ST AND MAIZE RD
VICTORIA, KS
PROJECT TYPE NEW CONSTRUCTION
DEAL TYPE Fee for Service/Type B
CG PROJECT NUMBER 064724

ARCHITECT OF RECORD

NORR
ARCHITECTS ENGINEERS PLANNERS

CONSULTANT:
PREMIER CIVIL ENGINEERING
Wartzburg
1156 Wartzburg Parkway Suite 105
Wichita, KS 67208
Phone (314) 826-7444 Fax (314) 826-7487
Premier Civil Engineering
Missouri State Certificate of Authority #A0081128

DEVELOPER
VEMMEIR
VICTOR EMMERSON INVESTMENTS
1156 Wartzburg Parkway Suite 105
Wichita, KS 67208
Phone (314) 826-7444 Fax (314) 826-7487
Premier Civil Engineering
Missouri State Certificate of Authority #A0081128

REVISIONS:
3.25-12-REvised PER CITY COMMENTS

DRAWING BY: M. FOGARTY
DATE: 03/08/2012
JOB NUMBER: 113201
TITLE: PRELIMINARY MASTER GRADING PLAN
SHEET NUMBER: SHEET 3

COMMENTS:
NOT RELEASED FOR CONSTRUCTION