

Center Section
Sec. 8-1285-R1W
Fd. 1/2" Rebar(PEC)

One-Step Final Plat

Dugan Industrial Third Addition

Wichita, Sedgwick County, Kansas

Part of the SW 1/4, Section 8, Township 28 South, Range 1 West of the 6th. P.M.

State of Kansas)
County of Sedgwick) SS

I, Bradley C. Ward, a licensed land surveyor of the State of Kansas, do hereby certify that the following described tract of land was surveyed on the 13th day of March, 2012 and the accompanying final plat prepared and that all the monuments shown herein actually exist and their positions are correctly shown to the best of my knowledge and belief:

LEGAL DESCRIPTION

The East 128 feet of the West 898.75 feet of the SW 1/4 Wing North of the K-42 Highway Right-of-Way, of Section 8, Township 28 South, Range 1 West, of the Sixth Principal Meridian, Sedgwick County, Kansas.

All easements and Rights of Way within said tract are hereby vacated by virtue of KSA 12-512(f) amended.

State of Kansas)
City of Wichita) SS

This plat of Dugan Industrial Third Addition, Wichita, Sedgwick County, Kansas, has been submitted to and approved by the Wichita-Sedgwick County Metropolitan Area Planning Commission, Wichita, day of Kansas, Dated this _____ day of _____, 2012.
Wichita-Sedgwick County Metropolitan Area Planning Commission:

G. Nelson Van Fleet, Chair
John L. Schlegel, Secretary

State of Kansas)
City of Wichita) SS

This plat approved and all dedications shown hereon accepted by the City Council of the City of Wichita, Kansas, this _____ day of _____, 2012.
At the Direction of the City Council

Carl Brewer, Mayor
Karen Sublett, City Clerk
Entered on transfer record this _____ day of _____, 2012.

Kelly B. Arnold, County Clerk

State of Kansas)
County of Sedgwick) SS

This is to certify that this plat has been filed for record in the Office of the Register of Deeds this _____ day of _____, 2012, at _____ o'clock _____ M., and is duly recorded.

Bill Meek, Register of Deeds
Tonya Buckingham, Deputy

Reviewed in accordance with K.S.A. 58-2005 on this _____ day of _____, 2012.

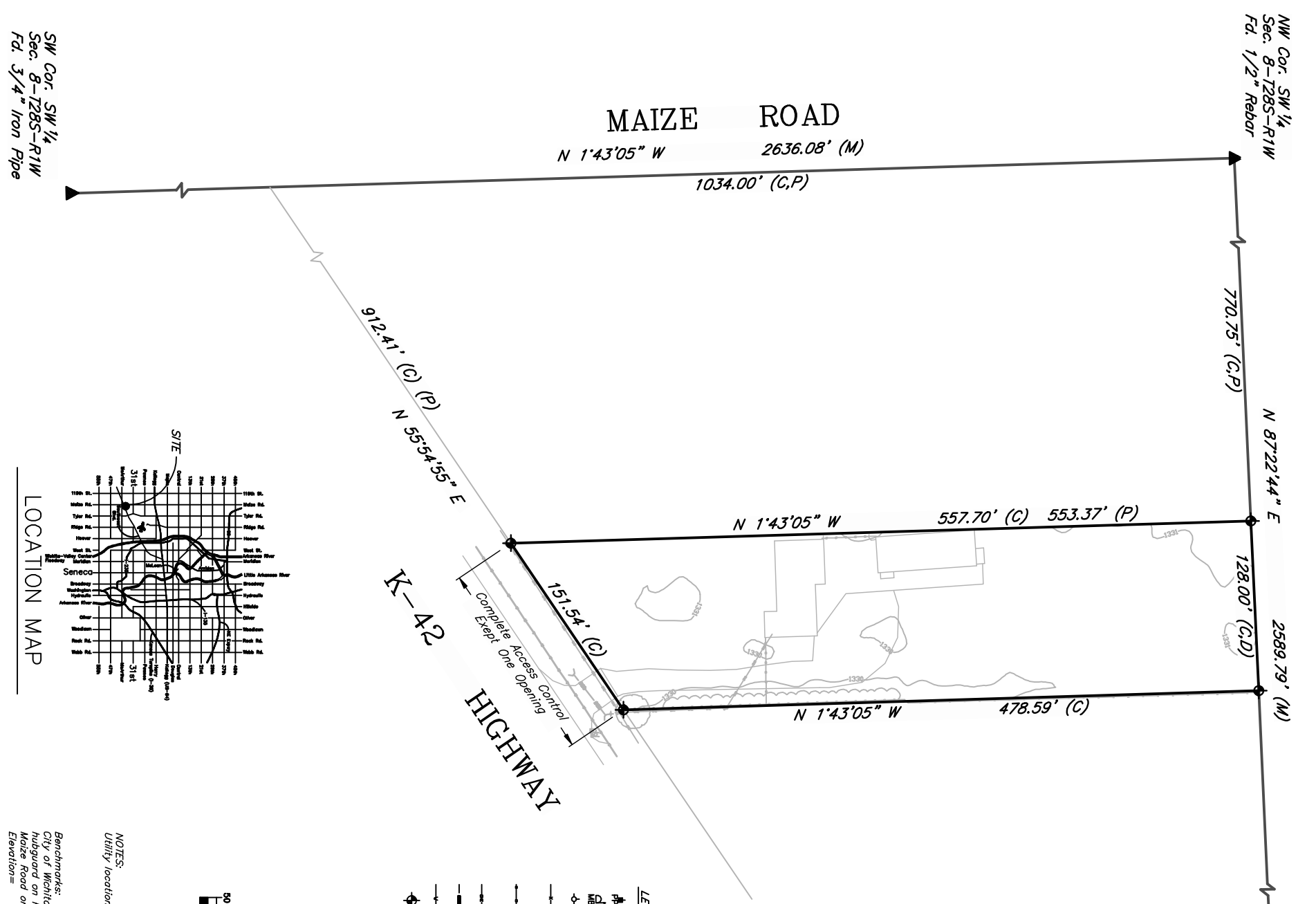
Tricia L. Rebellio, L.S. #1246
Deputy County Surveyor
Sedgwick County, Kansas



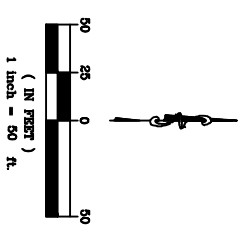
Kemiller
engineering

516 S. Market, Wichita, KS 67202 (316)264-0242

KEM No: 12017 Date: 3/26/12



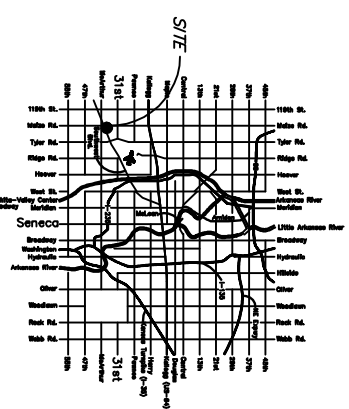
- LEGEND**
- ⚡ Power Pole
 - 📧 Mailbox
 - ⚓ Fire Hydrant
 - Fence (Chain Link, Woven/Welded Wire, Barbed Wire, etc.)
 - Fence (Wood, Brick/Mason, Rod Iron, etc.)
 - ⚡ Overhead Electric
 - Storm Water Sewer
 - 8" Water Main
 - ⚡ 5/8" Rebar (set) KEMPA GLS #157



NOTES:
Utility locations are from Kansas One-Call.

Benchmarks:
City of Wichita disc on the Southeast corner of Hubbard on PCBG, 200 feet +/- West of Maize Road on 31st St. South, Elevation = 1331.96 NAVD 88 (conv.) (1337.35 NGVD 29)

LOCATION MAP



SW Cor. SW 1/4
Sec. 8-1285-R1W
Fd. 3/4" Iron Pipe