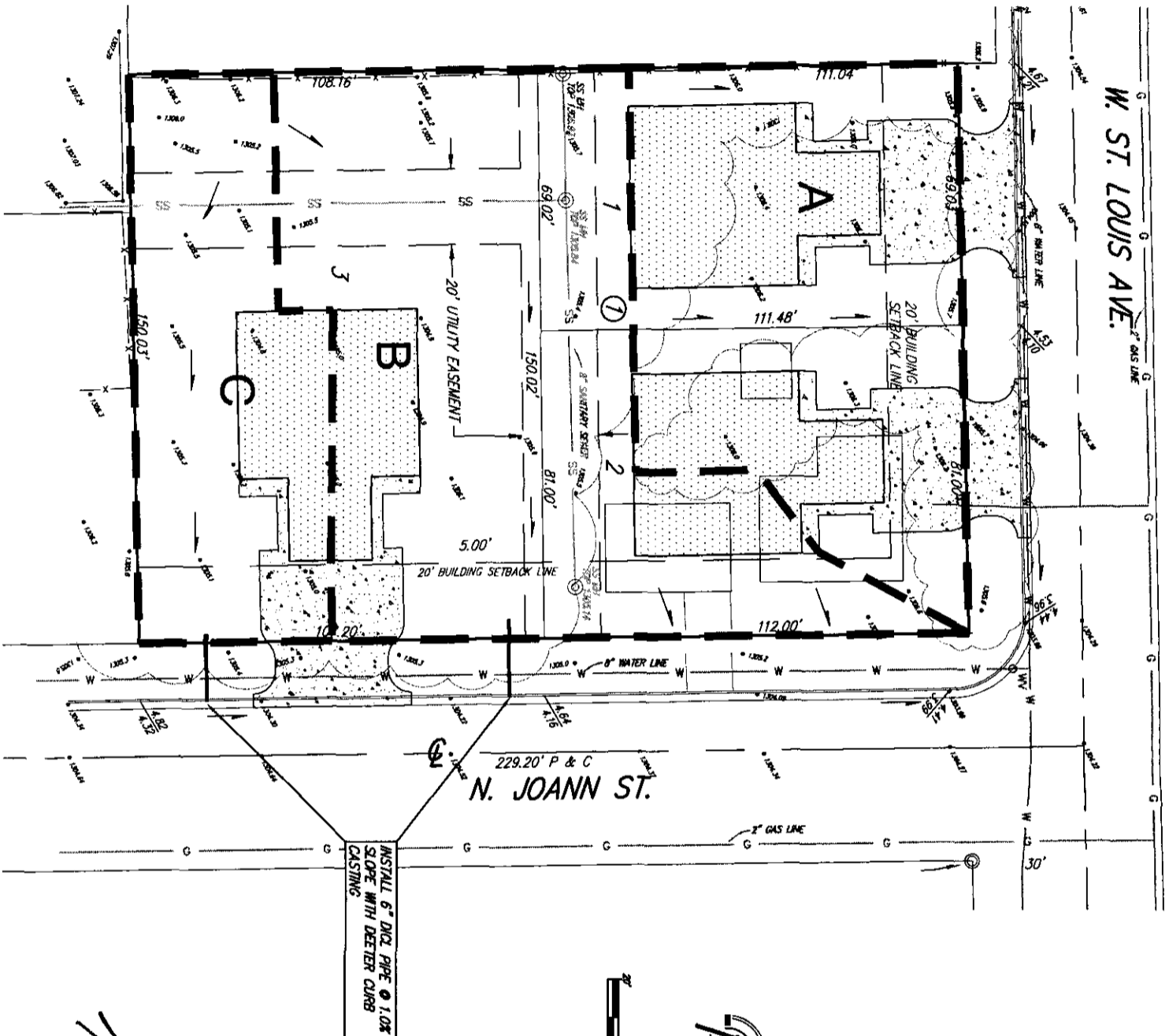


W. ST. LOUIS AVE.

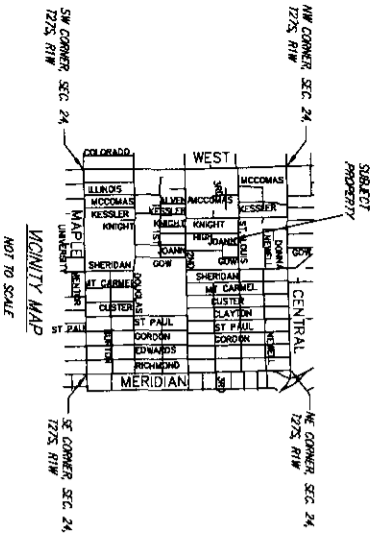


GENERAL NOTES

NATURAL DRAINAGE PATTERNS AND PATHS MUST BE MAINTAINED AS MUCH AS POSSIBLE WITH THE CONSTRUCTION OF THIS PROJECT.
 DETENTION AND WATER QUALITY TREATMENT WILL BE REQUIRED IF DETENTION THRESHOLDS IN CHAPTER 16.32 OF THE CITY CODE ARE EXCEEDED.
 EXISTING BUILDINGS ONSITE WILL BE REMOVED PRIOR TO CONSTRUCTION OF NEW BUILDINGS.

BENCH MARK:

CHISELED SQUARE ON THE TOP OF CURB ON THE WEST SIDE OF JOANN ST., 104' SOUTH OF THE SOUTH CURB RETURN AT THE SOUTHWEST CORNER OF JOANN ST. AND ST. LOUIS AVE.
 ELEVATION = 1304.81 (NAVD88)



**BATC ADDITION
 DRAINAGE PLAN**

Drainage Calculations

EXISTING IMPERVIOUS = 2,255 FT²
 PROPOSED IMPERVIOUS = 11,231 FT²
 TOTAL SITE AREA = 32,885 FT² (0.75 ACRES)
 EXISTING IMPERVIOUS % = 7%
 PROPOSED IMPERVIOUS % = 34%

URBAN LAND COVER - CANADIAN SERIES SOILS

HYDROLOGIC GROUP B
 Tc = 15 MINUTES
 I_a = 3.83 in/hr
 I₁₀₀ = 7.37 in/hr
 C_a = 0.20 (Grassed Areas)
 C_a = 0.80 (Rooftops)
 C_a = 0.87 (Paved Areas)

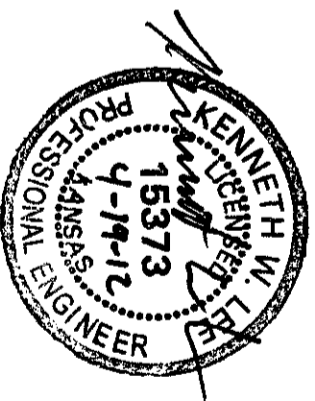
C₁₀₀ = 0.41 (Grassed Areas)
 C₁₀₀ = 0.83 (Rooftops)
 C₁₀₀ = 0.89 (Paved Areas)
 Weighted C values to be used in all calculations.

2 Year Runoff

Basin	Area (Acres)	Existing		Proposed	
		I ₁₀₀ %	C ₁₀₀	I ₁₀₀ %	C ₁₀₀
A	0.25	11%	0.27	0.3	0.6
B	0.35	7%	0.24	0.31	0.4
C	0.16	0%	0.20	0.27	0.2

100 Year Runoff

Basin	Area (Acres)	Existing		Proposed	
		I ₁₀₀ %	C ₁₀₀	I ₁₀₀ %	C ₁₀₀
A	0.25	11%	0.47	0.72	1.3
B	0.35	7%	0.45	1.2	1.3
C	0.16	0%	0.41	2.7%	0.6



Rugles & Bohm, P.A.
 Engineering, Surveying, Land Planning

924 North Main
 Wichita, Kansas 67203
 www.rba.com
 (316) 264-8008
 (316) 264-4821 fax
 E-mail: info@rba.com

**BATC ADDITION
 DRAINAGE PLAN
 WICHITA, KANSAS**

DATE: Apr. 18, 2012