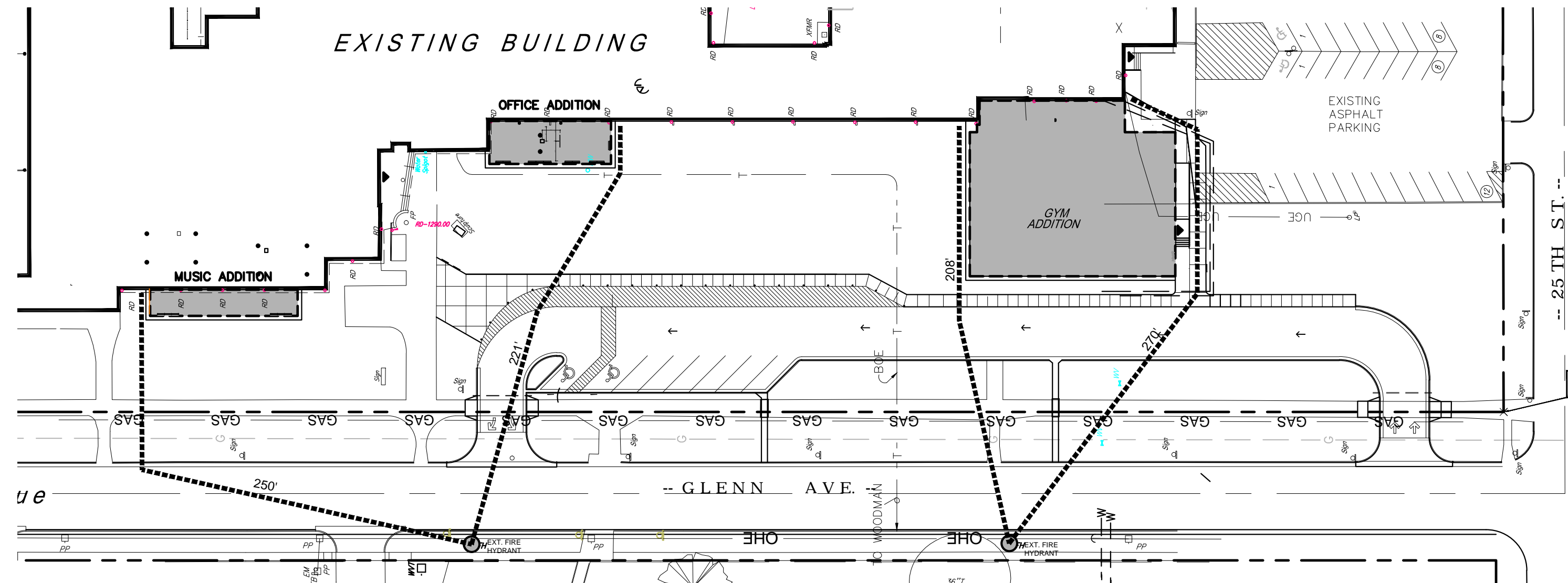


B TOTAL DISTURBED AREA
 1"=30'
 **LESS THAN 1 ACRE OF DISTURBANCE



B SITE CODE PLAN
 1"=50'

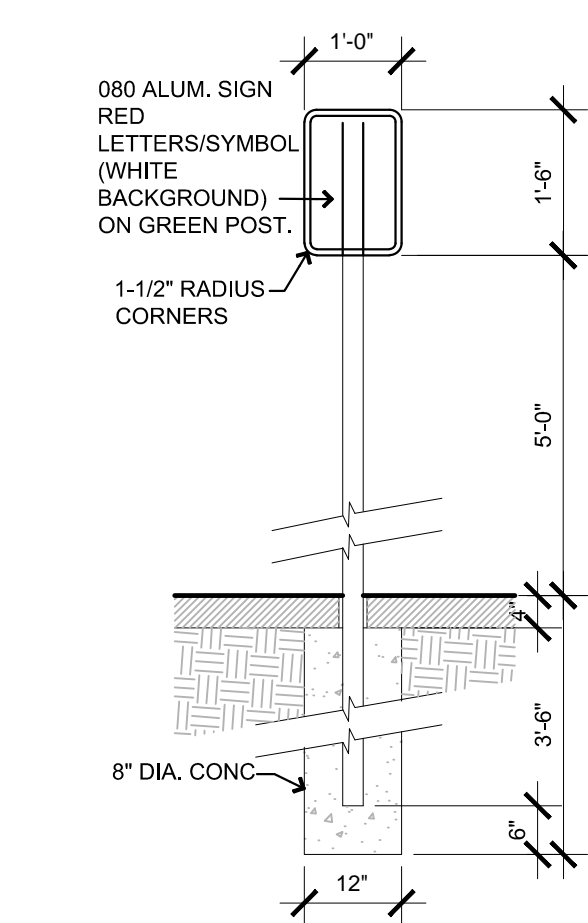
- LEGEND**
- FIRE HYDRANT LOCATION
 - BUILDING EXTERIOR EXIT
 - HYDRANT ARC OF COVERAGE

SITE CODE DATA

SEE COVER PAGE

LEGAL DESCRIPTION

SEE COVER PAGE

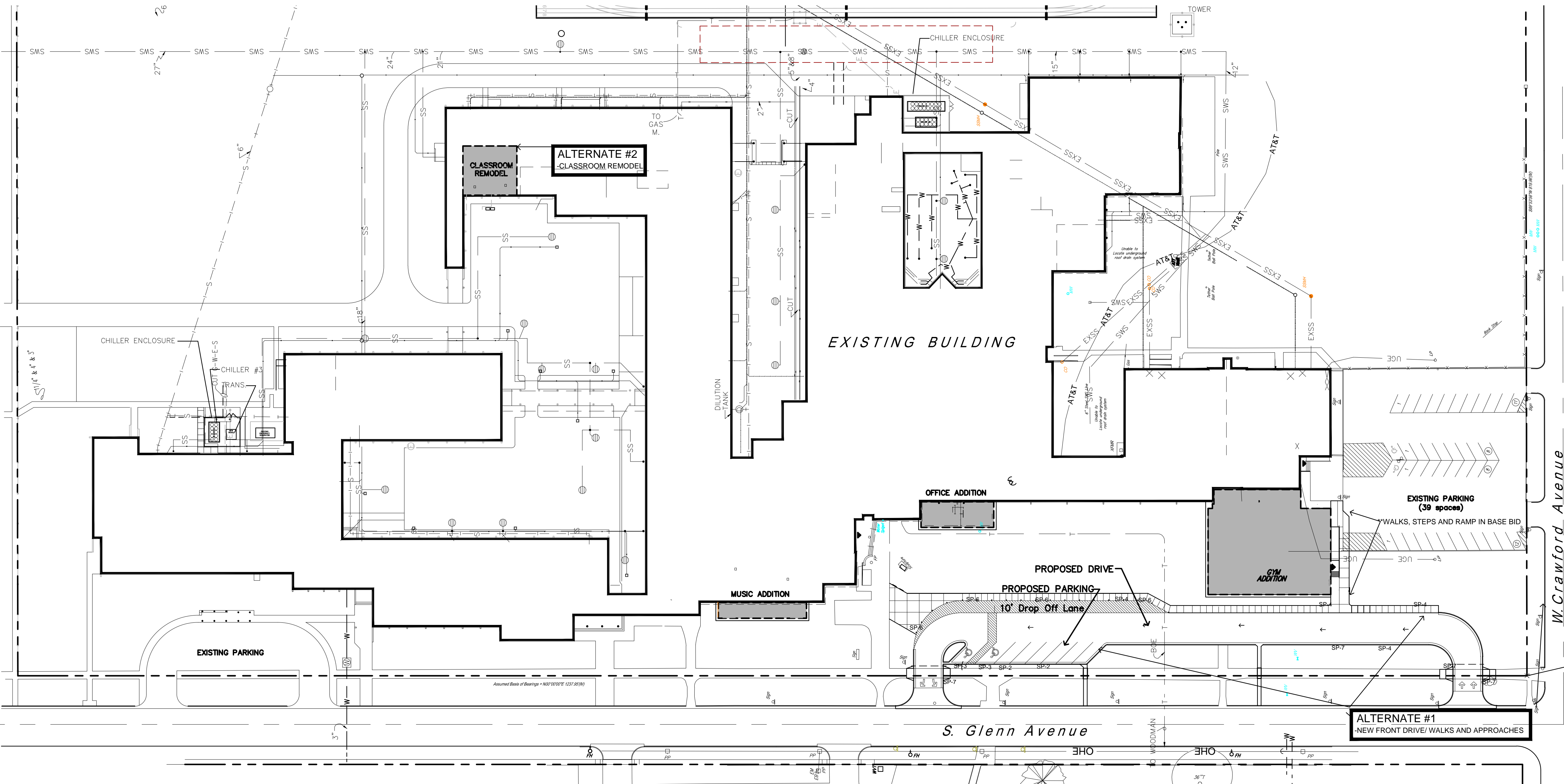


TYP. SIGN

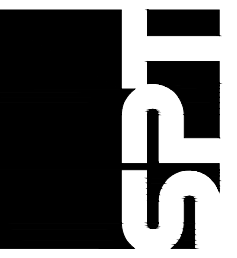
SITE SIGNAGE LEGEND

- SP-1 "Reserved Parking" for principal/administrator
- ▲ SP-2 "Visitor Parking" for visitor parking spots
- SP-3 "Handicap Parking" for handicap parking spots
- ▼ SP-4 "No Parking" No parking permitted.
- ▼ SP-5 "No Vehicles Allowed" at safe zones for students.
- SP-6 Passenger Loading Zone
- ◆ SP-7 "One Way Only" directional sign.

**All site signs to be a 12"x18" sign with red letters on white background on 080 aluminum green sign posts.



A OVERALL SITE PLAN
 1"=30'



SPANGENBERG PHILLIPS TICE
 ARCHITECTURE
 121 N Mead Ste 201 Wichita KS 67202
 T 316.267.4002 F 316.267.1509
 www.sptarchitecture.com



**ADDITIONS AND REMODEL TO
 USD 259 TRUESDELL MIDDLE SCHOOL**
 2464 SOUTH GLENN WICHITA, KANSAS 67217

REV. PER CITY COMMENTS
 21 MAY 12
 BID SET
 05 APR 12

SITE
 PLAN
 BID # 12-25-069

AS1