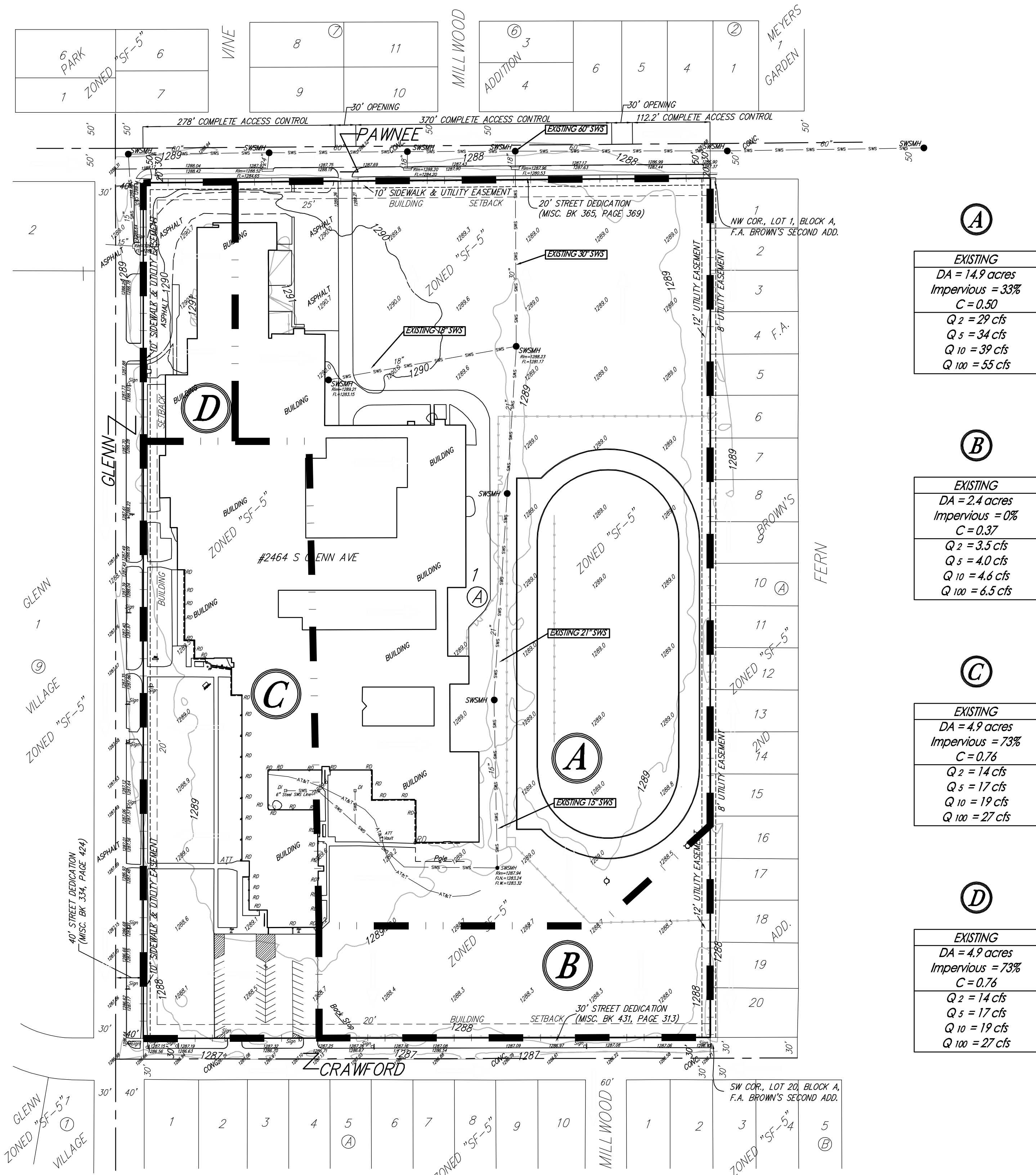


# DRAINAGE PLAN

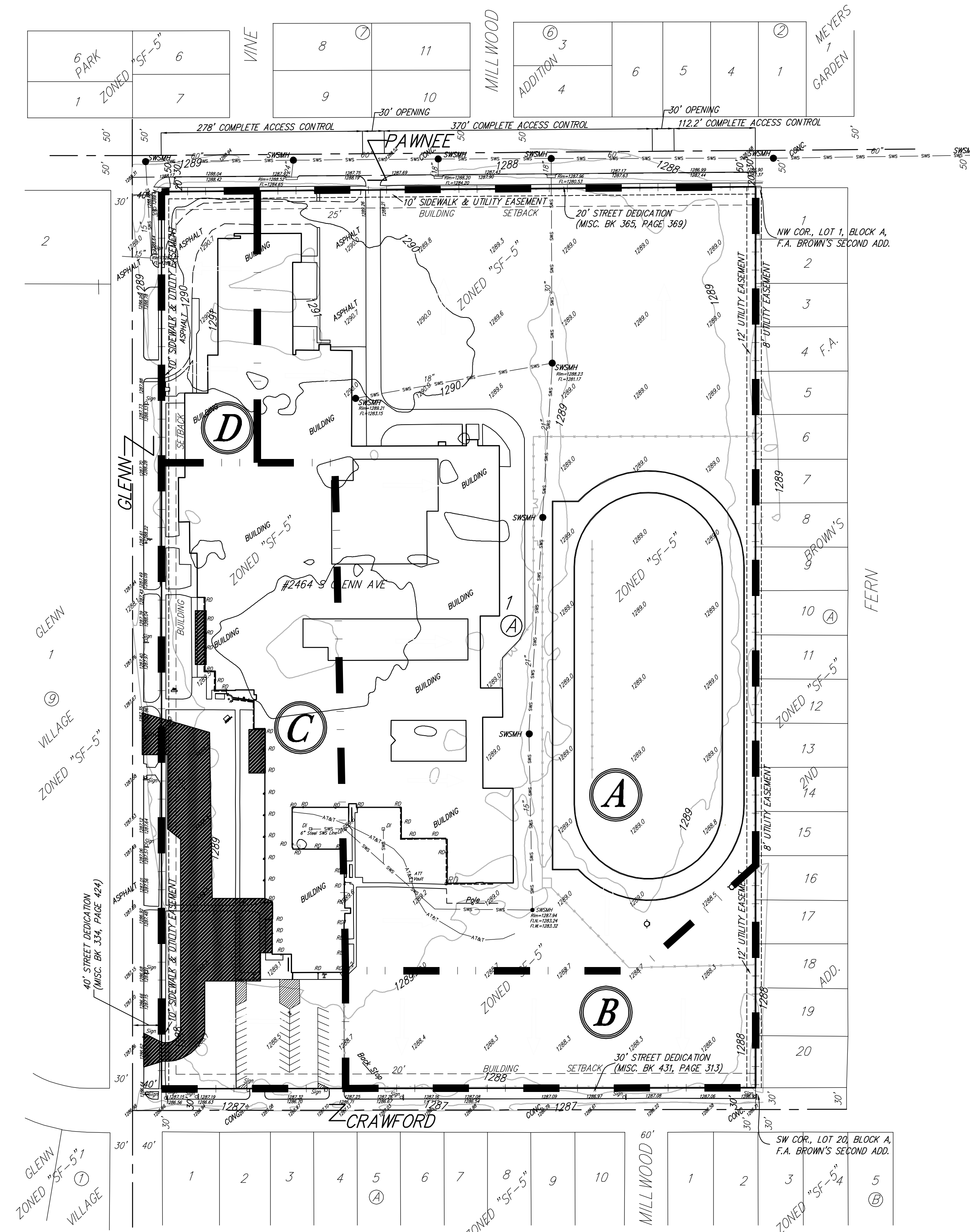
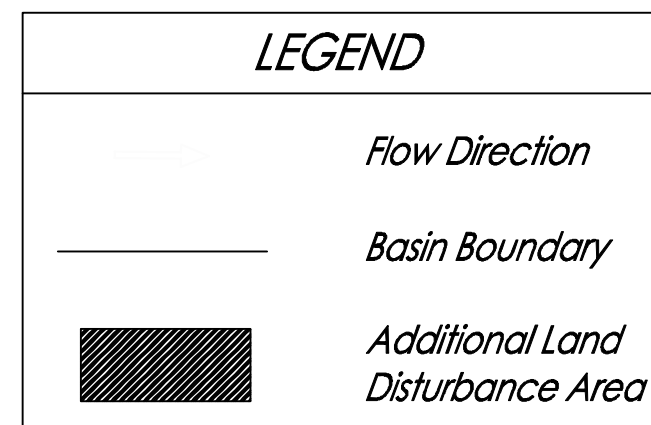
## TRUESDELL MIDDLE SCHOOL ADDITION

### WICHITA, SEDGWICK COUNTY, KANSAS



**EXISTING CONDITIONS**

NOTE: This site located in a FEMA ZONE X-Shaded (protected by levee) SFHA. There is currently storm water sewer located on site which drains the majority of the school site to the north and into the Pawnee Avenue storm sewer system, as shown. The rest of the site appears to sheet flow into the adjacent street ROWs.



**DEVELOPED CONDITIONS**

NOTE: Total land disturbance, as shown, will account for less than 1.0 acres, therefore no detention or water quality protections are provided at this time. At the time of additional land disturbance activity that cumulatively disturbs more than 1.0 acre, water quality, downstream channel protection, as well as additional detention controls may be required.

**DRAINAGE PLAN**  
**TRUESDELL MIDDLE**  
**SCHOOL ADDITION**

31 MAY 2012  
**Baughman Company, P.A.**  
315 Ellis St. Wichita, KS 67211 P 316-262-7271 F 316-262-0149  
ENGINEERING | SURVEYING | PLANNING | LANDSCAPE ARCHITECTURE