



NORTHERN 13,225-LEFT
CHAMIFER DRIVE-THRU
STORE NUMBER: 10075
NEC E. CENTRAL AVE. & N. OLIVER ST.
WICHITA, KS
PROJECT TYPE: NEW CONSTRUCTION
DEAL TYPE: Fee for Service/Land/Type B
CS PROJECT NUMBER: 064710

ARCHITECT OF RECORD
NORR
ARCHITECTS ENGINEERS PLANNERS

CONSULTANT:
**PREMIER CIVIL
ENGINEERING**
Lake Saint Louis
308 TCW Court
Lake St. Louis, MO 63367
Phone: (314) 925-7444
Fax: (314) 925-7457

DEVELOPER:
**VELMEIR
COMPANIES**

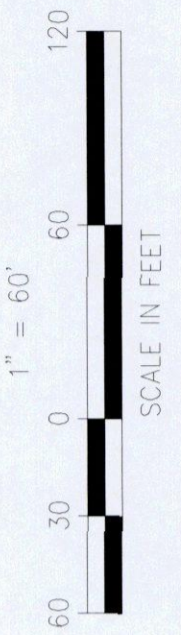
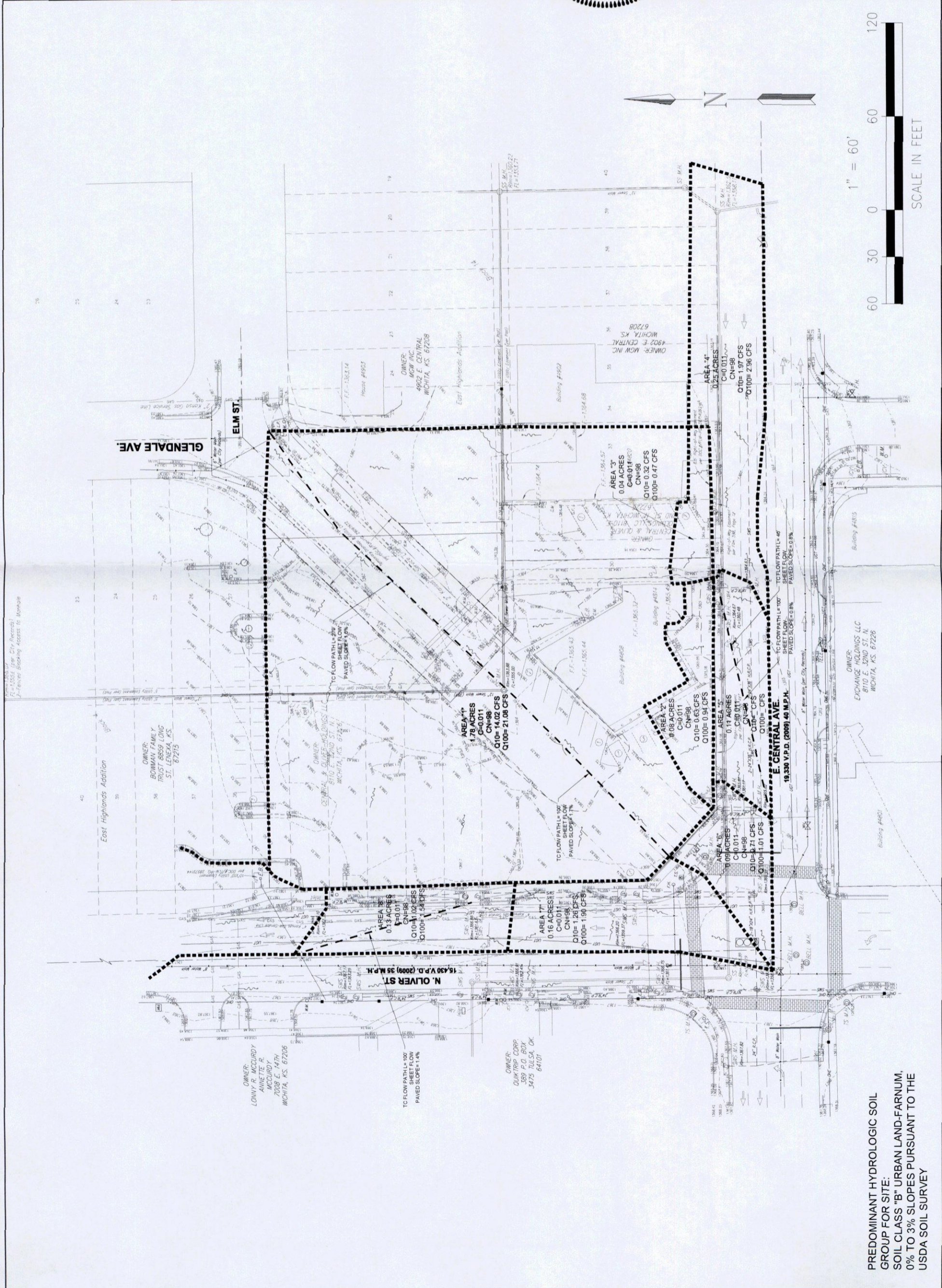


DRAWING BY: J. WURM
DATE: 5/25/12
JOB NUMBER: 112801
TITLE:

EXIST. CONDITIONS
DRAINAGE MAP
SHEET NUMBER:

SHEET 1 OF 3

COMMENTS:
NOT RELEASED FOR CONSTRUCTION



PREDOMINANT HYDROLOGIC SOIL
GROUP FOR SITE:
SOIL CLASS "B" URBAN LAND-FARNUM,
0% TO 3% SLOPES PURSUANT TO THE
USDA SOIL SURVEY