

CVS
pharmacy

NORTHERN 13,225-LEFT
CHAMFER DRIVE-THRU
STORE NUMBER: 10075
NEC, E. CENTRAL AVE. & N. OLIVER ST.,
WICHITA, KS
PROJECT TYPE: NEW CONSTRUCTION
DEAL TYPE: Fee for Service/Land/Type B
CS PROJECT NUMBER: 064710

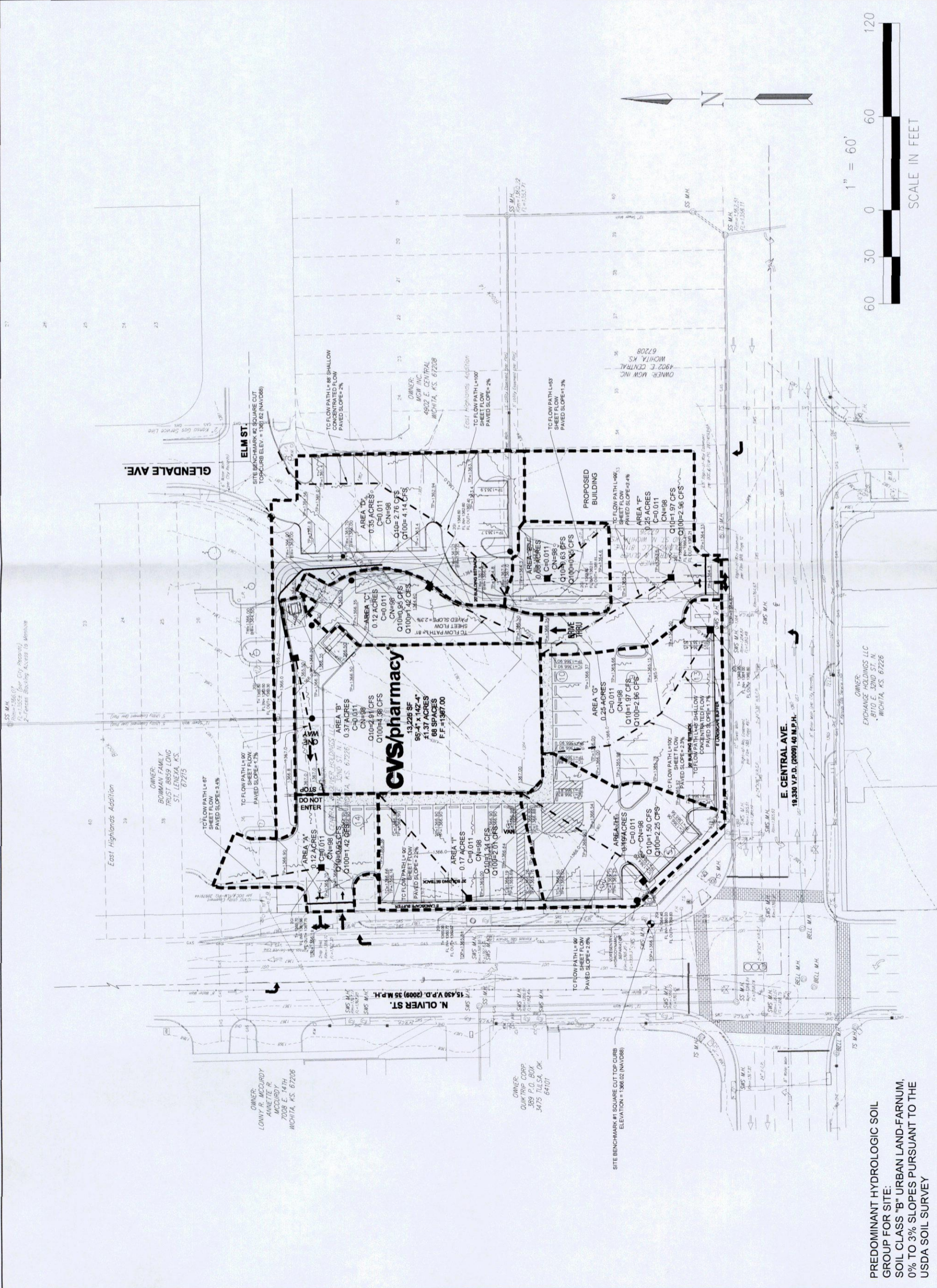
ARCHITECT OF RECORD
NORR
ARCHITECTS ENGINEERS PLANNERS

CONSULTANT:
**PREMIER CIVIL
ENGINEERING**
Lake Saint Louis
308 TCW Court
Lake St Louis, MO 63367
Phone: (314) 925-7444
Fax: (314) 925-7457

DEVELOPER:
VELMEIR



DRAWING BY:	J. WURM
DATE:	5/25/12
JOB NUMBER:	112801
TITLE/POST DEVELOPMENT CONDITIONS DRAINAGE MAP	
SHEET NUMBER:	
SHEET 2 OF 3	
COMMENTS: NOT RELEASED FOR CONSTRUCTION	



PREDOMINANT HYDROLOGIC SOIL
GROUP FOR SITE:
SOIL CLASS "B" URBAN LAND-FARMLAND,
0% TO 3% SLOPES PURSUANT TO THE
USDA SOIL SURVEY