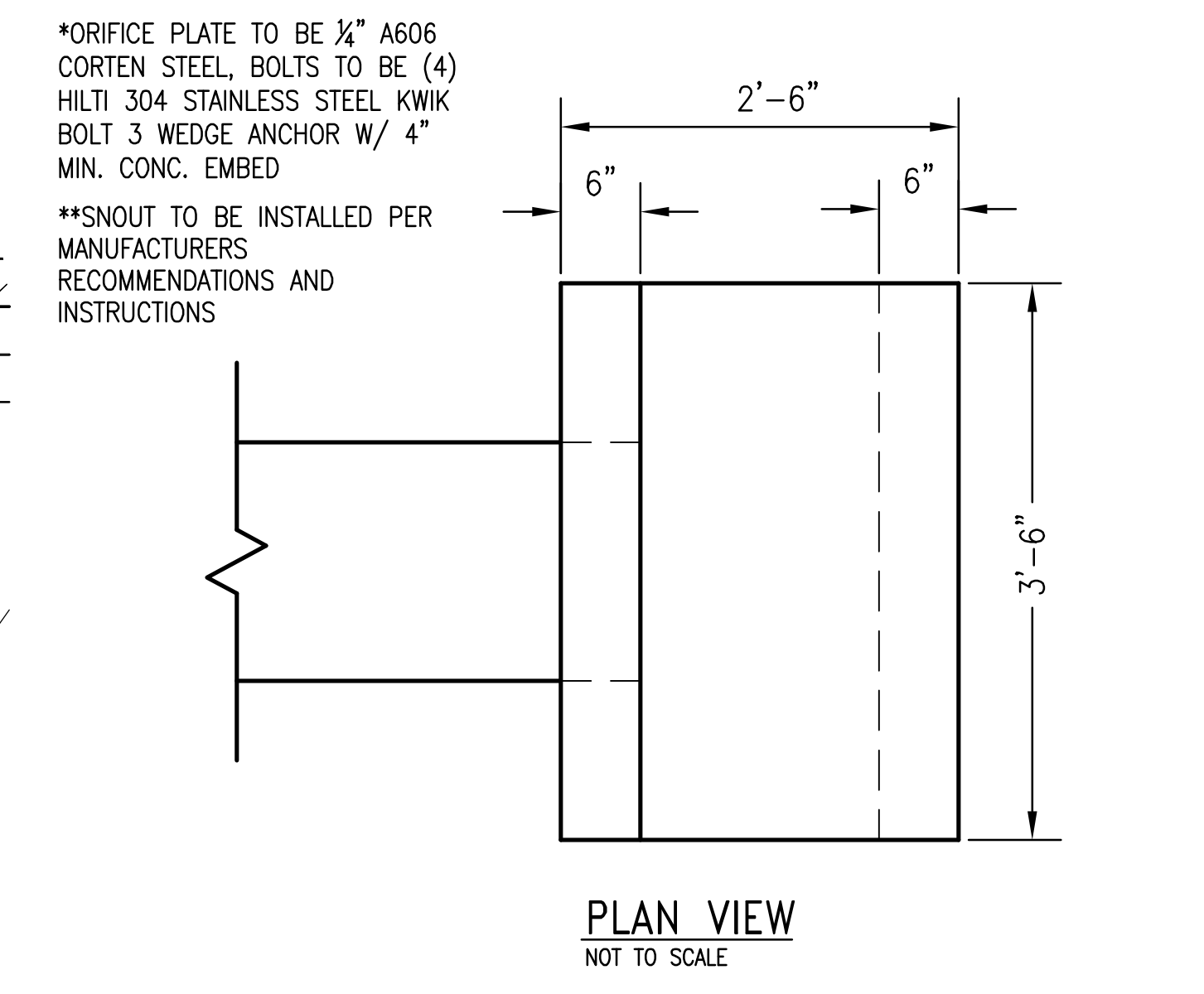
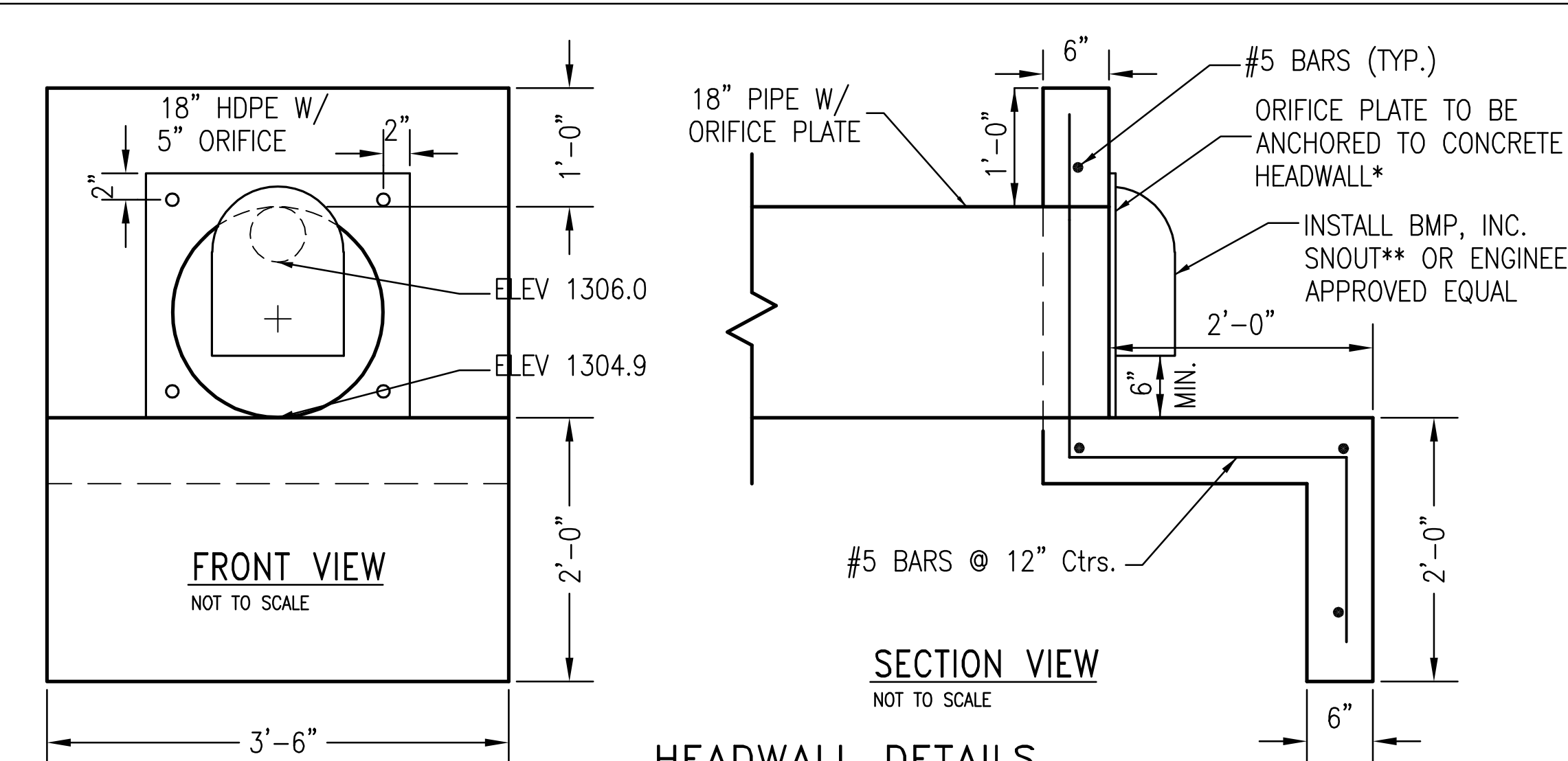
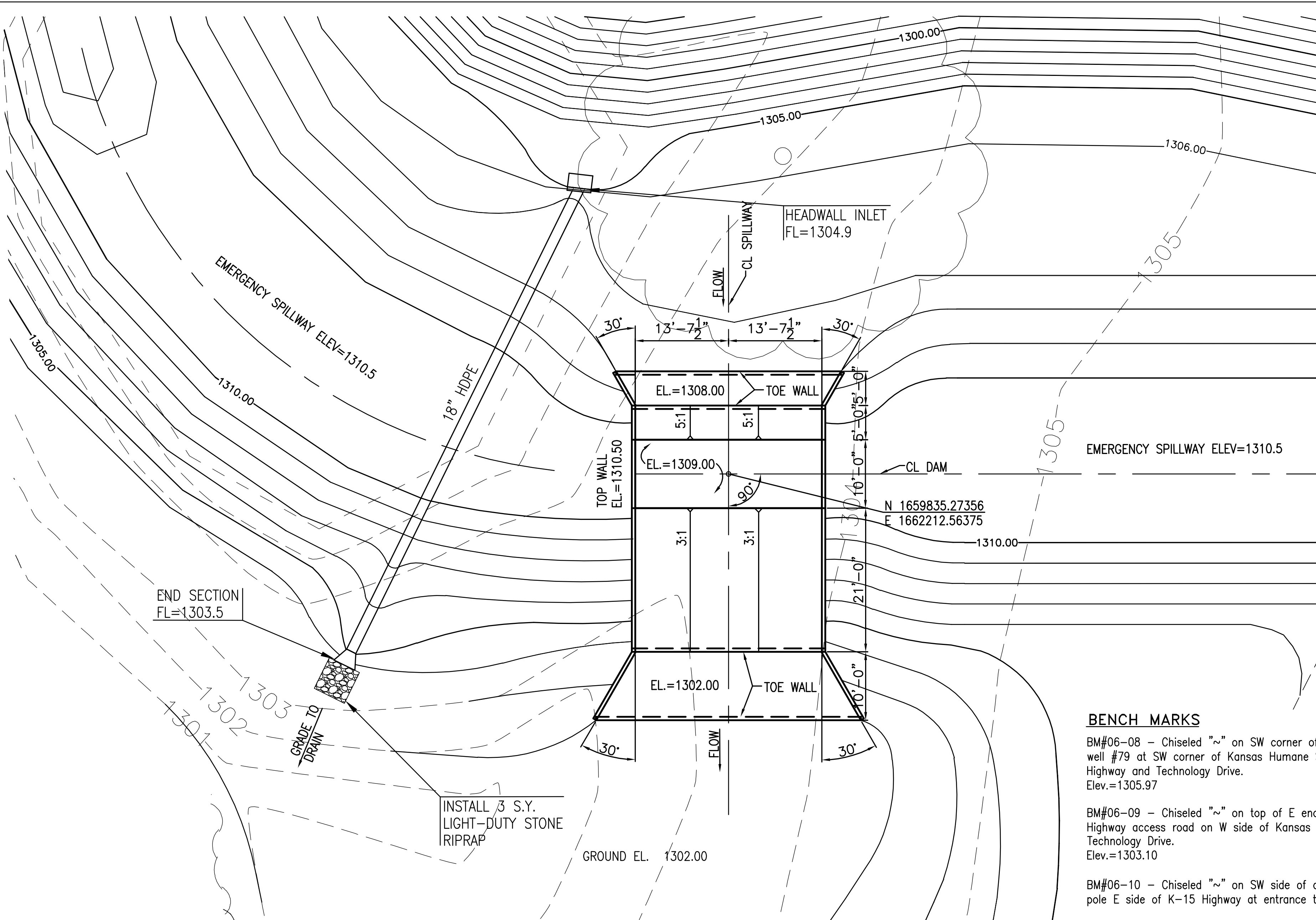


THIS DOCUMENT IS THE PROPERTY OF SPIRIT AEROSYSTEMS, INC. ITS ACCEPTANCE CONSTITUTES AN AGREEMENT THAT IT SHALL BE TREATED AS CONFIDENTIAL MATERIAL. THAT IT SHALL BE RETURNED UPON REQUEST, AND THAT THE CONTENTS THEREOF SHALL NOT BE DISCLOSED, REPRODUCED, OR COPIED EXCEPT BY WRITTEN PERMISSION OF SPIRIT AEROSYSTEMS, INC.
K:\PROJECTS\2011\1101060200_Spirit_Wichita_Southwest_CCA_Expansion - CFF\5-Civil\CAD\Sheets\Final_Release\114.DWG



DESIGN DATA

CONCRETE: $f'_c = 4,000$ PSI
 REINFORCING: $f_y = 60,000$ PSI
 CONCRETE MIX: KDOT GRADE 4.0 (AE)(SA)

GENERAL NOTES

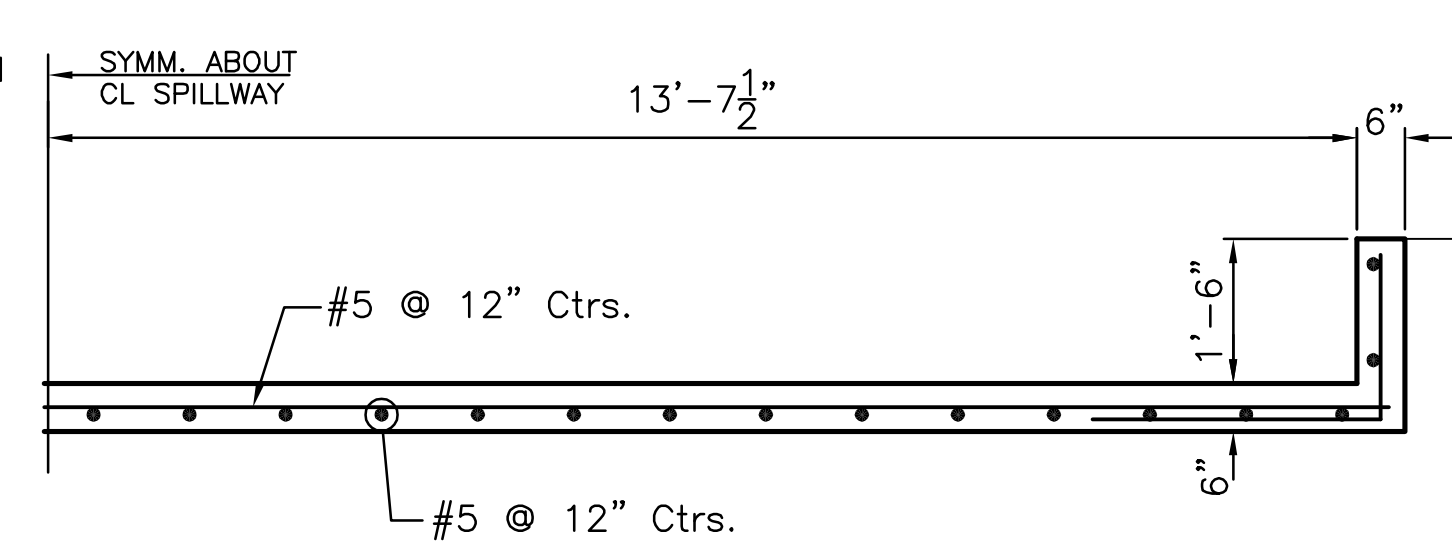
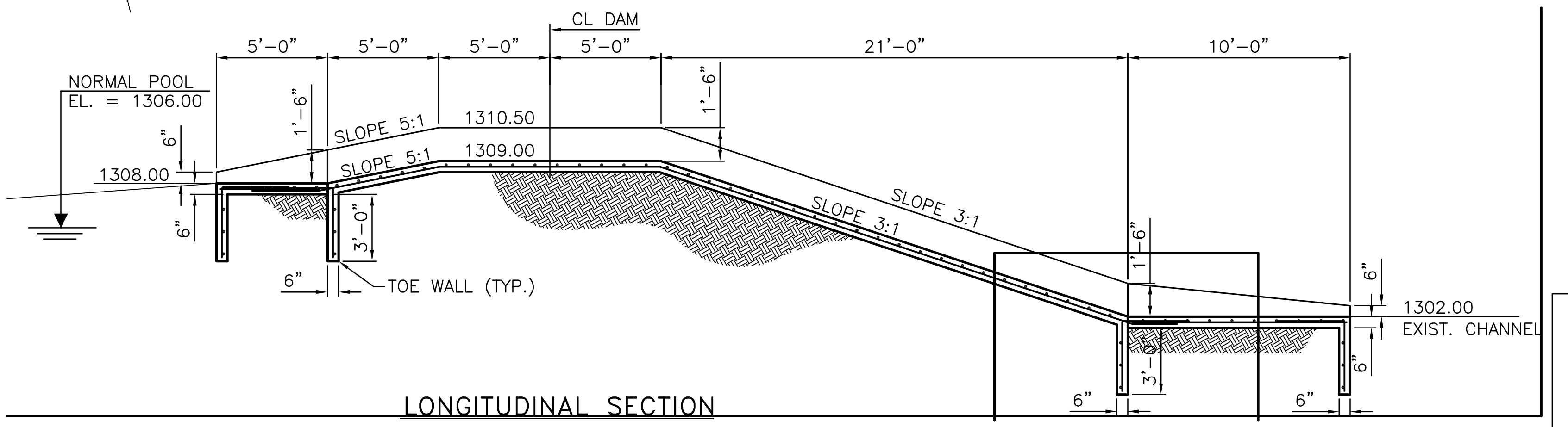
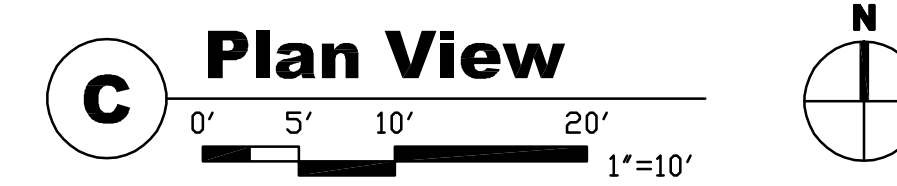
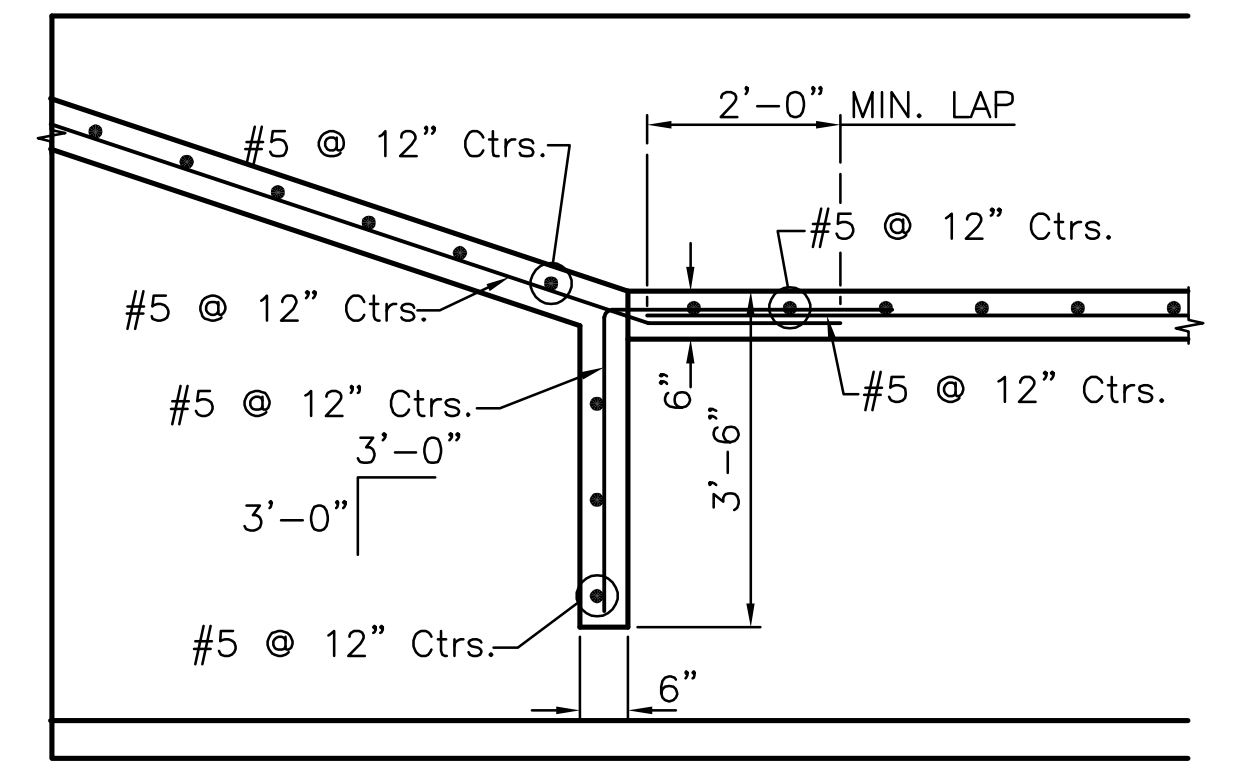
- USE KDOT 2007 STANDARD SPECIFICATIONS "MANUAL OF STANDARD PRACTICE"
- PROVIDE REINFORCING SUPPORTS PER CRSI
- MINIMUM LAP SPLICE 2'-0"
- CONCRETE COVER SHALL BE 3" CAST AGAINST SOIL, ALL OTHER SHALL BE 2"
- REINFORCING STEEL SHALL BE KDOT GRADE (60).

BENCH MARKS

BM#06-08 - Chiseled "x" on SW corner of concrete pad for recovery well #79 at SW corner of Kansas Humane Society at NE corner of K-15 Highway and Technology Drive. Elev.=1305.97
 BM#06-09 - Chiseled "x" on top of E end of RCP on E side of k-15 Highway access road on W side of Kansas Humane Society, 400' N of Technology Drive. Elev.=1303.10
 BM#06-10 - Chiseled "x" on SW side of concrete base for steel power pole E side of K-15 Highway at entrance to Kansas Humane Society.

CONTROL POINTS

CP#5101 - N-1659269.6813, E-1662175.2483
 PK Nail and Shiner at SE corner of Technology Road and K-15 Highway access road
 21.02' NE, PK Nail in centerline of Technology Drive
 31.93' E, Center of N sign post for Spirit
 36.79' SE, Top center of W of two right of way markers
 50.63' W, Woven wire fence at W right of way of K-15 Highway access road
 CP#5104 - N-1659583.6561, E-1662070.3713
 PK Nail and Shiner at W edge of access road
 5.20' W, Woven wire fence between K-15 Highway and access road
 58.58' E, Center of manhole lid at recovery well#120
 91.10' NE, Center of chiseled square (BM#06-09)
 38.78' S, NW corner of substation block wall
 CP#5105 - N-1660013.8893, E-1661988.1854
 PK Nail and Shiner at W edge of asphalt access road, E side of K-15 Highway
 147.05' SSE, NNW face of N guard post at recovery well#122
 65.69' E, N guard post at recovery well
 106.77' NE, SW corner of 7' chain link fence
 5.00' W, Woven wire fence
 SW of Kansas Humane Society buildings



APPROVED	BY	
DESCRIPTION	ISSUED FOR CONSTRUCTION	
DATE	09/19/11	
FIRE PROTECTION REVIEW	APPROVED	DATE
ACCEPTABILITY	DATE	
NAME	DEPT.	

SPIRIT AEROSYSTEMS

GLM Architecture
 409 S. Fourth Street, Suite 100
 Wichita, Kansas 67202
 Tel: (316) 261-0001
 www.glm.com

LINDA WADE (316)-316-0917

SOUTHWEST CCA
 EXPANSION TO CFF

WICHITA

Project No: 1615203
 Sheet Name: WEIR DETAILS
 Drawing No: 31G-114-271

MKEC
 ENGINEERING CONSULTANTS
 WICHITA, KS