

THIS DOCUMENT IS THE PROPERTY OF SPIRIT AEROSYSTEMS, INC. ITS ACCEPTANCE CONSTITUTES AN AGREEMENT THAT IT SHALL BE TREATED AS CONFIDENTIAL MATERIAL. THAT IT SHALL BE RETURNED UPON REQUEST, AND THAT THE CONTENTS THEREOF SHALL NOT BE DISCLOSED, REPRODUCED, OR COPIED EXCEPT BY WRITTEN PERMISSION OF SPIRIT AEROSYSTEMS, INC.
K:\PROJECTS\2011\101060200_Spirit_Wichita_Southwest_CCA_Expansion - OFF\5-Civil\CAD\Sheets\Final_Release\121.DWG

ES 1-1
STA 10+00 LINE 1
INSTALL 36" PRECAST
CONCRETE END SECTION
N=1659852.91
E=1662532.60

JOB 1-2
STA 10+26.34 LINE 1
CONSTRUCT JUNCTION BOX
L=5'-0" W=3'-0"
N=1659841.91
E=1662556.53

CONTROL POINTS

CP#5100 - N=1659350.4627, E=1662967.7518
#4 Bar at NW corner of Quality Drive and Technology Drive
13.45' SE, PK Nail in top of E end of CMP
17.06' N, SW corner of cinder block wall of substation
26.08' NNW, Centerline of fence corner at SE property of Humane Center
In-Line, NE corner of field entrance

CP#5101 - N=1659269.6813, E=1662175.2483
PK Nail and Shiner at SE corner of Technology Road and K-15 Highway access road
21.02' NE, PK Nail in centerline of Technology Drive
31.93' E, Center of N sign post for Spirit
36.79' SE, Top center of W of two right of way markers
50.63' W, Woven wire fence at W right of way of K-15 Highway access road

CP#5102 - N=1659296.8486, E=1662922.2925
PK Nail and Washer, S side of Technology Drive, W of Quality Drive
70.29' NE, #4 Bar (Control Point #5100)
67.58' E, Center of chiseled square (BM#92-36)
61.48' NNW, Center of manhole lid at recovery well#84

CP#5103 - N=1659514.2941, E=1662964.5269
Chiseled "+" on concrete pad
2.93' NW, Center of manhole lid for recovery well#85
3.60' SW, Water well
68.83' E, S end of long west side of building

CP#5104 - N=1659583.6561, E=1662070.3713
PK Nail and Shiner at W edge of access road
5.20' W, Woven wire fence between K-15 Highway and access road
58.58' E, Center of manhole lid at recovery well#120
91.10' NE, Center of chiseled square (BM#06-09)
38.78' S, NW corner of substation block wall

BENCH MARKS

BM#92-36 - Chiseled "d" on top of S curb of Technology Drive on W side of Quality Drive, S of substation at SW corner of Assembly Support Building.
Elev.=1327.57

BM#06-07 - Chiseled "d" on center of concrete pad for recovery well #83, second well W of Quality Drive on N side of Technology Drive.
Elev.=1322.02

BM#06-08 - Chiseled "d" on SW corner of concrete pad for recovery well #79 at SW corner of Kansas Humane Society at NE corner of K-15 Highway and Technology Drive.
Elev.=1305.97

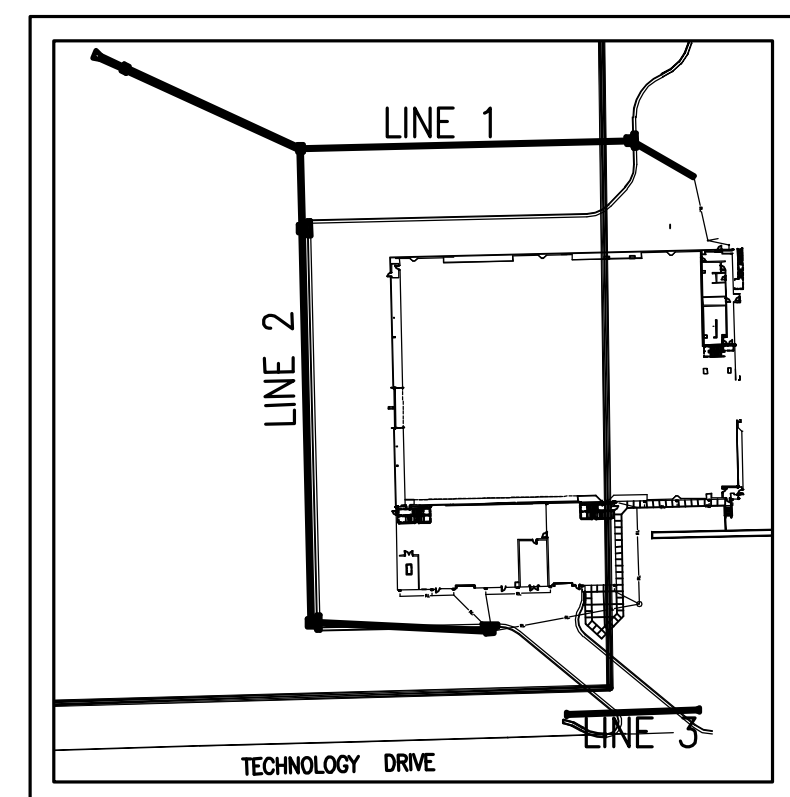
BM#06-09 - Chiseled "d" on top of E end of RCP on E side of K-15 Highway access road on W side of Kansas Humane Society, 400' N of Technology Drive.
Elev.=1303.10

BM#06-10 - Chiseled "d" on SW side of concrete base for steel power pole E side of K-15 Highway at entrance to Kansas Humane Society.
Elev.=1317.54

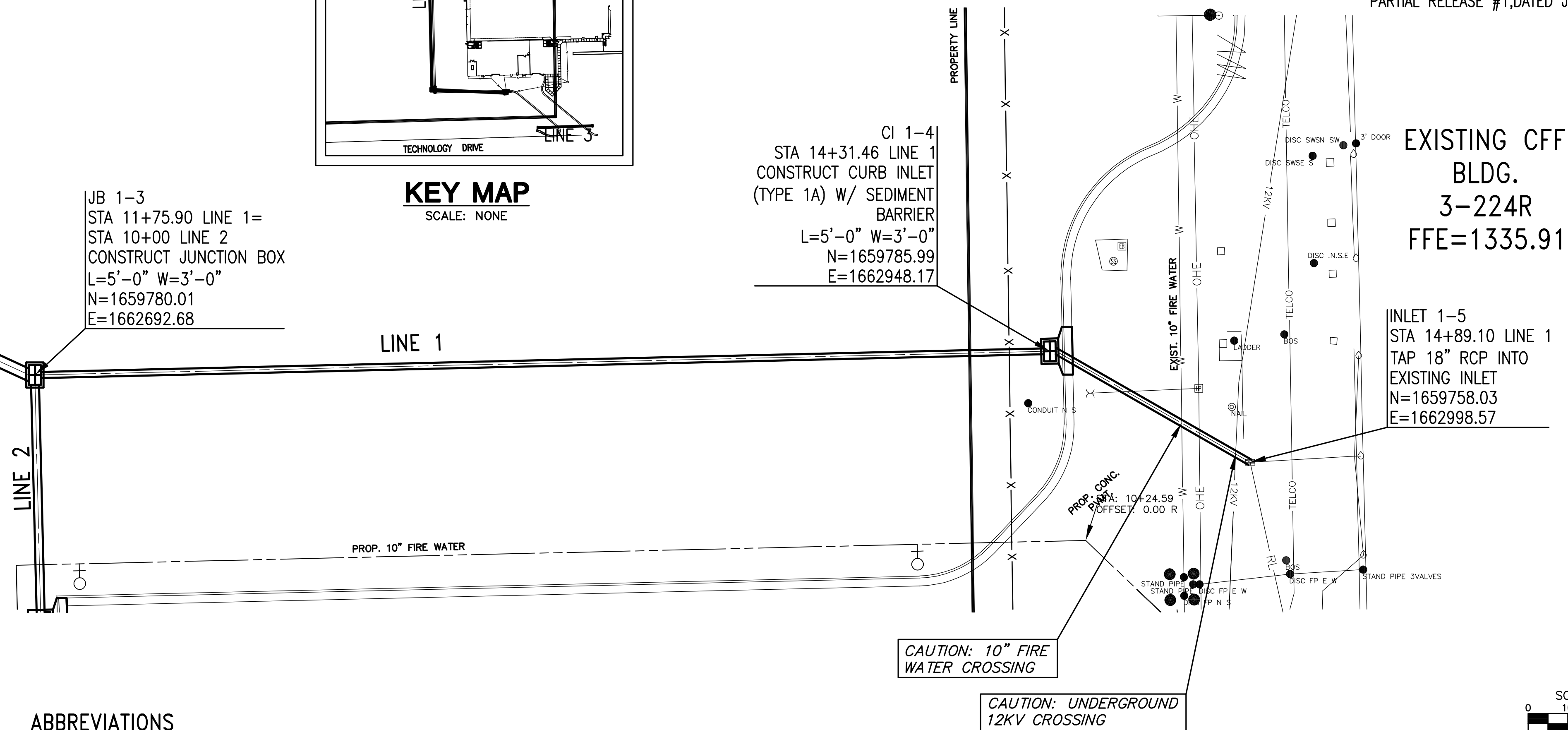
BM#06-11 - Bent 60d Nail Step Nails on S side of hedge tree in E-W hedge row, 500± E of centerline of K-15 Highway on N side of Kansas Humane Society property.
Elev.=1317.54

BM#06-12 - Chiseled "d" on NE part of concrete pad for monitoring well 100' SW of SW corner of pet cemetery.

JOB 1-3
STA 11+75.90 LINE 1=
STA 10+00 LINE 2
CONSTRUCT JUNCTION BOX
L=5'-0" W=3'-0"
N=1659780.01
E=1662692.68



KEY MAP
SCALE: NONE



- NOTES:**
- PROPOSED SPIRIT 69KV UNDERGROUND DUCT BANK - REFERENCE SPIRIT PROJECT NUMBER 1176526 FOR EXACT LOCATION.
 - EXISTING CFF BUILDING RESIDES WITHIN THE INDUSTRIAL PARK COMPLEX ADDITION.
 - EXISTING GRADES ON THESE PLANS REPRESENT PROPOSED GRADES AS SHOWN IN PARTIAL RELEASE #1, DATED JUNE 1, 2011.

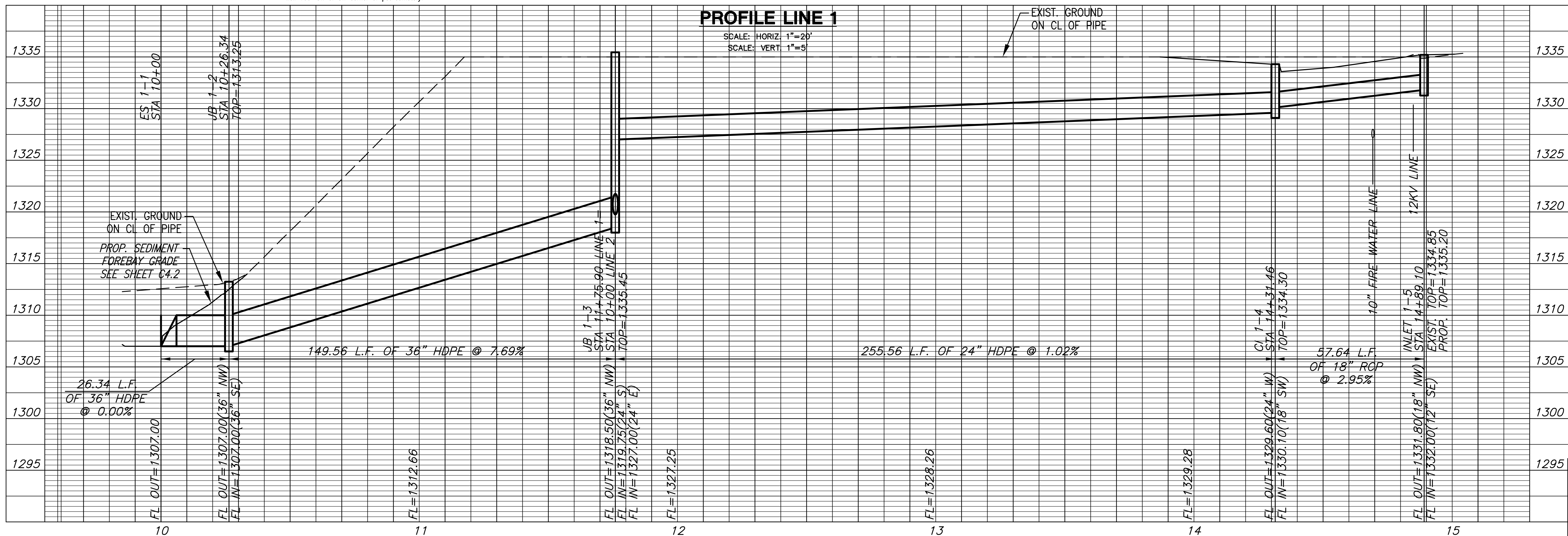
CONTRACTOR TO VERIFY DEPTH AND LOCATION OF ALL EXISTING UTILITIES PRIOR TO CONSTRUCTION.

ABBREVIATIONS

JB-JUNCTION BOX
CI-CURB INLET
ES-END SECTION

PLAN LINE 1
PROFILE LINE 1

SCALE: HORIZ: 1"=20'
SCALE: VERT: 1"=5'



APPROVED	BY	
DESCRIPTION	ISSUED FOR CONSTRUCTION	
DATE	08/19/11	
FIRE PROTECTION REVIEW	APPROVED	DATE
ACCEPTABILITY HAS SPECIFICATIONS APPROVED	NAME	DEPT.

SPIRIT AEROSYSTEMS

GLM Architecture
120 S. Massachusetts, Wichita, KS 67202
Tel: (316) 261-0001

MKEC ENGINEERING CONSULTANTS WICHITA, KS

Project No: 1615203
Sheet Name: STORM WATER SEWER PLAN & PROFILE
Sheet: C5.1
Drawing No: 316-121-271

SOUTHWEST CCA
EXPANSION TO CFF

Facilities Engineering
BUDG. 3-224R/01
Date: 09/19/2011
WICHITA

LINDA WADE (316)-316-0917