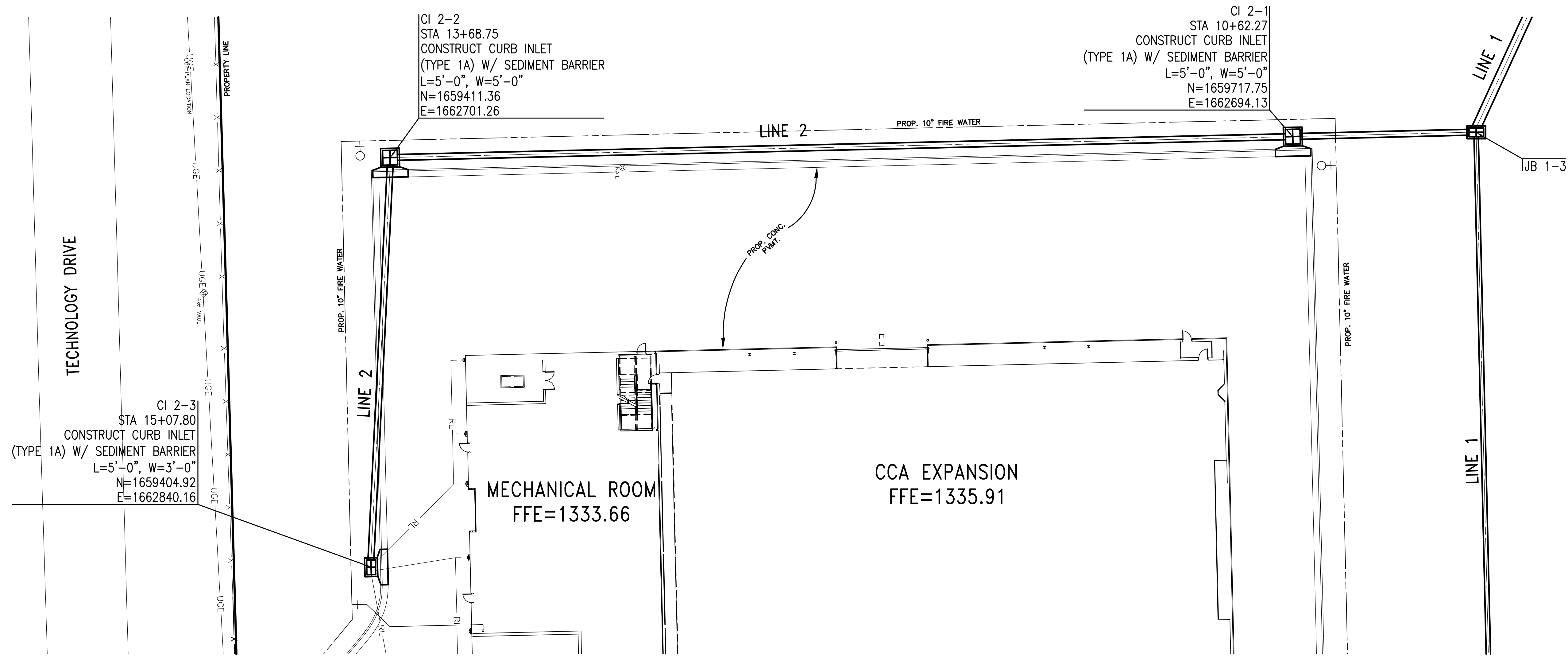


THIS DOCUMENT IS THE PROPERTY OF SPIRIT AEROSYSTEMS, INC. ITS ACCEPTANCE CONSTITUTES AN AGREEMENT THAT IT SHALL BE TREATED AS CONFIDENTIAL MATERIAL. THAT IT SHALL BE RETURNED UPON REQUEST, AND THAT THE CONTENTS THEREOF SHALL NOT BE DISCLOSED, REPRODUCED, OR COPIED EXCEPT BY WRITTEN PERMISSION OF SPIRIT AEROSYSTEMS, INC.
K:\PROJECTS\2011\101060200_Spirit_Wichita_Southwest_CCA_Expansion - OFF\5-Civil\CAD\Sheets\Final_Release\122.DWG

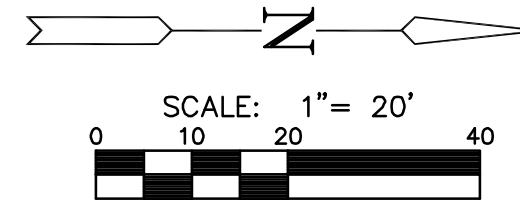
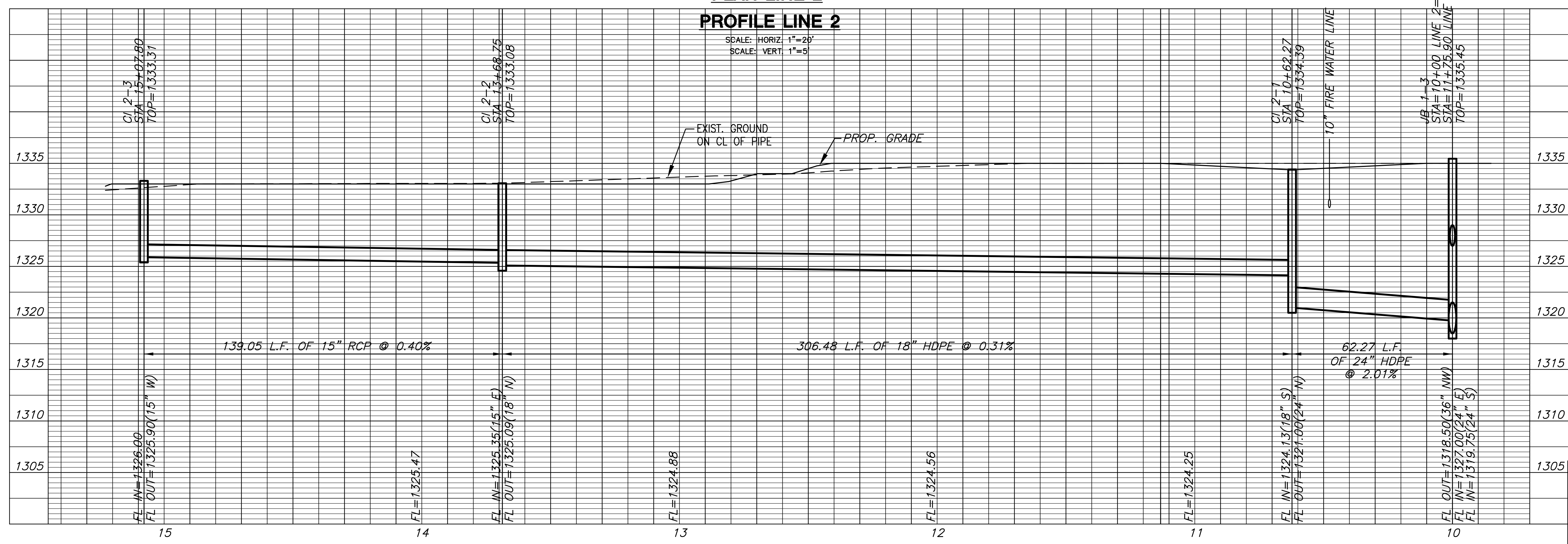


CONTRACTOR TO VERIFY DEPTH AND LOCATION OF ALL EXISTING UTILITIES PRIOR TO CONSTRUCTION.

PLAN LINE 2

PROFILE LINE 2

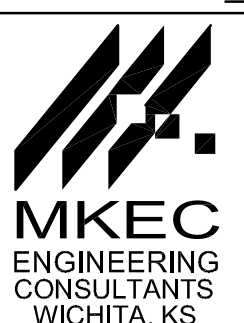
SCALE: HORIZ: 1"=20'
SCALE: VERT: 1"=5'



APPROVED		DESCRIPTION		DATE	
BY		ISSUED FOR CONSTRUCTION		09/19/11	
FIRE PROTECTION REVIEW					
REVIEW			APPROVED <input type="checkbox"/> NOT REQUIRED <input type="checkbox"/>		
ACCEPTABILITY OF THE WORK SPECIFICATIONS APPROVED			DATE		
NAME	DEPT.	DATE			

GLM Architecture
408 E. 10th Street, Suite 100
Wichita, KS 67202
Tel: (316) 261-0001
www.glm.com

Project No: 1615203	WICHITA
Sheet Name: STORM WATER SEWER PLAN & PROFILE	Facilities Engineering
Sheet: C5.2	Drawn By: MAB
Drawing No: 316-122-271	Date: 09/19/2011



LINDA WADE (316)-316-0917

SOUTHWEST CCA
EXPANSION TO CFF