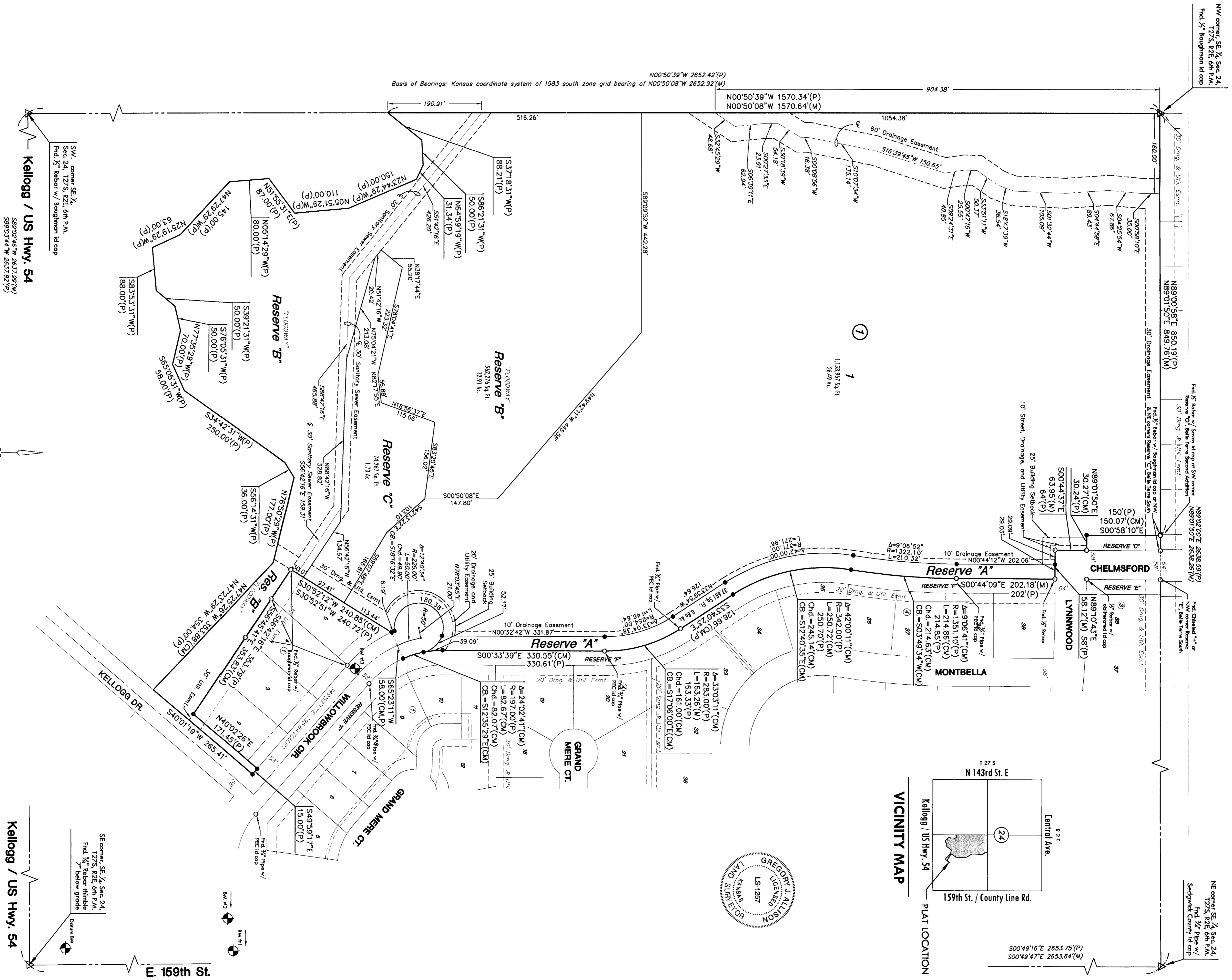


FINAL PLAT

AWAN ESTATES ADDITION

AN ADDITION TO WICHITA, SEDGWICK COUNTY, KANSAS



LEGEND

- Date of Survey: June 6th, 2011
- △ = Section corner monument found
 - = Found survey monument see annotation for type
 - = Set 5/8" rebar w/ MKEC CIS 39 Id. cap
 - (M) = Measured
 - (CM) = Calculated from measured
 - (P) = Platted
- Monuments not set on south line of Reserve "B", all fall in flow line of creek.



BENCH MARKS

- BM 101 UGCS Standard Table, 75' N and 42' E of SE corner, Sec. 24, of US Hwy. 54 & 159th St. E. Elev. = 1302.33 (NAVD 88)
- BM 102 Square cut top curb nose at east end Island Willowbrook west of 159th St. E. Elev. = 1306.44 (NAVD 88)
- BM 103 Square cut top curb nose at south end Island Grand Mere north of Willowbrook Elev. = 1306.05 (NAVD 88)
- BM 104 Square cut top curb SW side of Willowbrook Addition. Elev. = 1303.49 (NAVD 88)

MINIMUM PAD ELEVATIONS LOWEST OPENINGS			
LOT	BLOCK	ELEVATION NAVD 88	RESERVE
1	1	1306.4	
			Reserve "C"
			1306.4

FINAL PLAT
AWAN ESTATES ADDITION
AN ADDITION TO WICHITA, SEDGWICK COUNTY, KANSAS

CERTIFICATE OF SURVEY

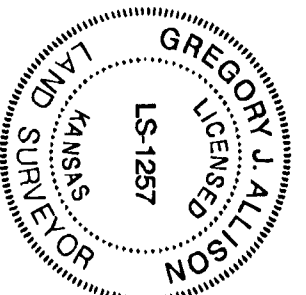
I, Gregory J. Allison, a registered land surveyor in Kansas, do hereby certify that I have been in responsible charge of surveying and plating of "AWAN ESTATES ADDITION", an addition to Wichita, Sedgwick County, Kansas, into a lot, a Block, Reserves, and Streets, the same being accurately set forth in the accompanying plat and described herein:

A replat of Lots 6-27, inclusive, Block 1, Lots 1-56, inclusive, Block 6, Lots 1-10, inclusive, Block 7, Willowbrook Street lying west of Chelmsford Street, Willow Brook Courts lying west of Chelmsford Street, Belle Terre Street, Belle Terre Courts, Lymwood Street lying west of Chelmsford Street, and Chelmsford Street lying south of Lymwood Street and north of Willowbrook Street, Reserves B, D, and M, all in Belle Terre South Addition, an addition to Wichita, Sedgwick County, Kansas.

All easements, rights-of-way, building setbacks, and access controls, together with all other public dedications within the above described property, are hereby vacated and replated by virtue of K.S.A. 12-512(b).

I hereby certify that the details of this plat are correct to the best of my knowledge and belief this ____ day of _____, 2011.

Gregory J. Allison, PE, LS #1257
MKEC Engineering Consultants, Inc.
411 North Webb Road
Wichita, Kansas 67206



OWNER'S CERTIFICATE

Know all men by these presents that the undersigned property owner of the land above set forth in the Registered Land Surveyor's Certificate, has caused the same to be surveyed and platted into Lots, Blocks, Reserves, and Streets the same to be known as "AWAN ESTATES ADDITION", an addition to Wichita, Sedgwick County, Kansas.

Easements for the construction, maintenance, and access of streets, utilities, and drainage, as indicated on the accompanying plat are hereby granted to the public.

Carl Brewer, Mayor, Mayor

Attest:

Karen Sulbert, City Clerk, City Clerk

Atty. City Sec.

Reserve "A" is platted for private walkways, landscaping, irrigation, berms, monuments, drainage, and utilities. Reserve "B" is platted for private walkways, landscaping, irrigation, drainage, utilities confined to easements, and floodplain/floodway preservation. Reserve "C" is platted for private walkways, landscaping, irrigation, berms, monuments, pool house, gazebo/outdoor pavilion, and private swimming pool. The Reserves shall be owned and maintained by the owner(s)/developer, and/or their successors, assigns, and/or a Lot/Home Owner's Association.

A drainage plan has been developed for this plat. All drainage easements, rights-of-way, or reserves shall remain established grades or as modified with the approval of the applicable City or County Engineer, and unobstructed to allow for the conveyance of stormwater. Reserve "C" and Lot 1 Block 1, are required to adhere to the minimum pad elevations as depicted herein the "Minimum Pad Elevations" table.

The floodway, as indicated, shall be the responsibility of the owners until such time as the appropriate governing body extending jurisdiction elects to assume the responsibility for the maintenance and improvements of the drainage, provided further, that no structure shall be constructed on or within said floodway, nor shall any fill, change of grade, creation of a channel or any other work be carried out without the permission of the City Engineer.

TRANSFER RECORD

STATE OF KANSAS, SEDGWICK COUNTY) ss:
Entered on transfer record this ____ day of _____, 2011

Kelly B. Arnold, County Clerk, County Clerk

Atty. County Clerk

NY HOMES, LLC, a Kansas limited liability company

Muhammad S. Ahmad, manager

STATE OF KANSAS, SEDGWICK COUNTY) ss:

This instrument was acknowledged before me on ____ day of _____, 2011, by Muhammad S. Ahmad, manager of NY Homes, LLC, a Kansas limited liability company.

IN WITNESS WHEREOF, I have hereunto set my hand and affixed my official seal, the day and year last above written.

Notary Public, Notary Public
My Term Expires: _____

REGISTER OF DEEDS CERTIFICATE

STATE OF KANSAS, SEDGWICK COUNTY) ss:
This is to certify that this instrument was filed for record in the Register of Deeds office this day of _____, 2011, at _____ o'clock ____ M, and is duly recorded.

Bill Meek, Register of Deeds, Register of Deeds

Attest:

Tonya E. Buckingham, Deputy, Deputy

Atty. Register of Deeds

Max Winkow, President, President

STATE OF KANSAS, SEDGWICK COUNTY) ss:

This instrument was acknowledged before me on ____ day of _____, 2011, by Max Winkow, President, Belle Terre South Homeowners Association a Kansas not-for-profit corporation.

IN WITNESS WHEREOF, I have hereunto set my hand and affixed my official seal, the day and year last above written.

Notary Public, Notary Public
My Term Expires: _____

COUNTY SURVEYOR

STATE OF KANSAS, SEDGWICK COUNTY) ss:

Reviewed in accordance with K.S.A. 58-2005 on this ____ day of _____, 2011.

Tricia L. Robello, LS #1246, Deputy County Surveyor

Deputy County Surveyor
Sedgwick County, Kansas