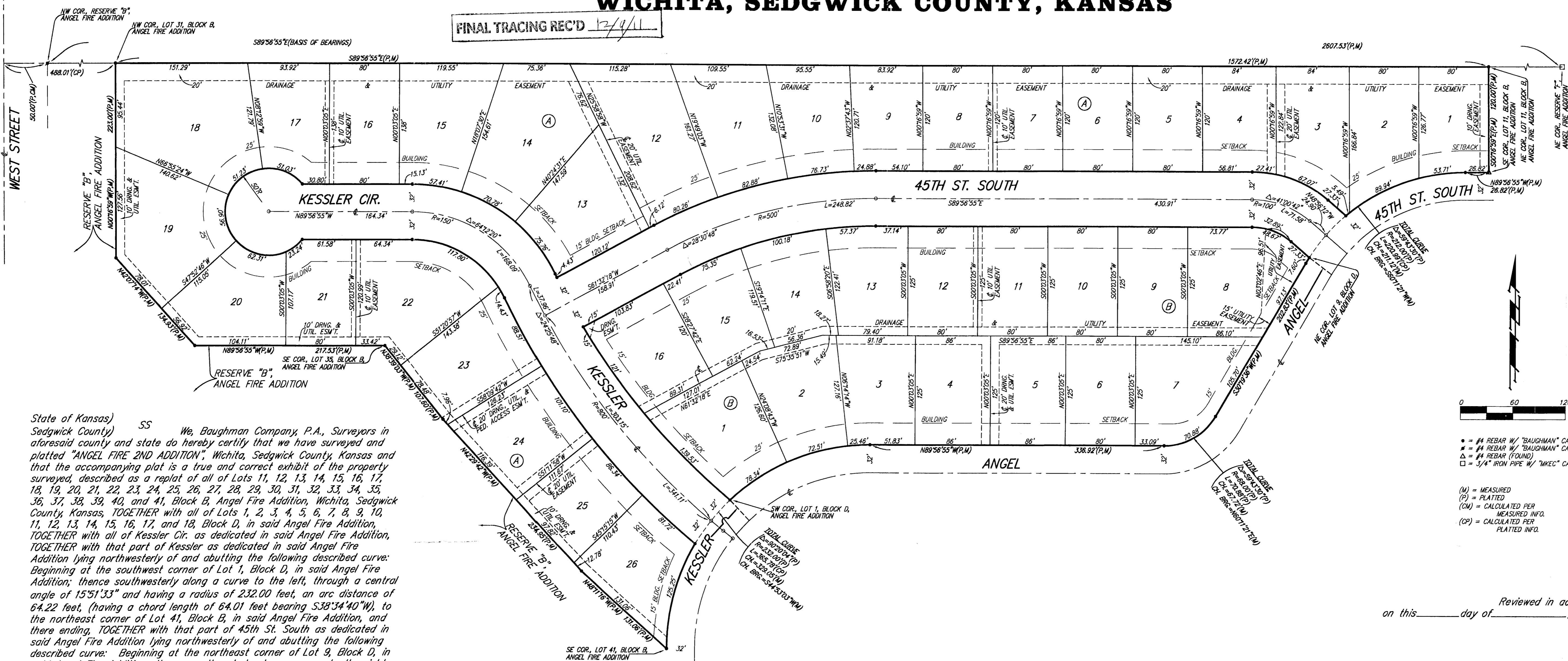


ANGEL FIRE 2ND ADDITION

WICHITA, SEDGWICK COUNTY, KANSAS



LOT	BLOCK	ELEVATION
18-26	A	94.0
		1281.86

BENCHMARK:
CITY OF WICHITA BENCHMARK DISC - SE COR. OF INTERSECTION OF 47TH ST. S. AND WEST STREET
42.10' E. OF CENTERLINE
51.00' S. OF CENTERLINE
99.80' E. OF P.P. ON SW COR.
23.80' S. OF P.P.
ELEV. = 92.29 CITY DATUM
(1288.15 NAVD83)

BRASS DISC ON TOP OF CURB,
EAST END OF CURB RETURN,
NORTH OF THE NW COR., LOT 49,
BLOCK C, ANGEL FIRE ADDITION.
ELEV. = 94.37 CITY DATUM
(1288.23 NAVD83)

BRASS DISC ON TOP OF CURB,
WEST END OF CURB RETURN,
WEST OF THE SW COR., LOT 1,
BLOCK B, ANGEL FIRE ADDITION.
ELEV. = 94.37 CITY DATUM
(1288.23 NAVD83)

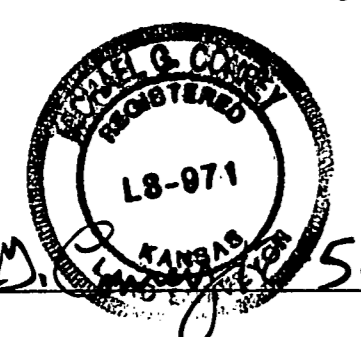
* = #4 REBAR W/ "BAUGHMAN" CAP (SET)
 * = #4 REBAR W/ "BAUGHMAN" CAP (FOUND)
 Δ = #4 REBAR (FOUND)
 □ = 3/4" IRON PIPE W/ "MKEC" CAP (FOUND)

(M) = MEASURED
 (P) = PLATTED
 (CM) = CALCULATED PER MEASURED INFO.
 (CP) = CALCULATED PER PLATTED INFO.

State of Kansas) SS We, Baughman Company, P.A., Surveyors in
Sedgwick County) aforesaid county and state do hereby certify that we have surveyed and
platted "ANGEL FIRE 2ND ADDITION", Wichita, Sedgwick County, Kansas and
that the accompanying plat is a true and correct exhibit of the property
surveyed, described as a replat of all of Lots 11, 12, 13, 14, 15, 16, 17,
18, 19, 20, 21, 22, 23, 24, 25, 26, 27, 28, 29, 30, 31, 32, 33, 34, 35,
36, 37, 38, 39, 40, and 41, Block B, Angel Fire Addition, Wichita, Sedgwick
County, Kansas, TOGETHER with all of Lots 1, 2, 3, 4, 5, 6, 7, 8, 9, 10,
11, 12, 13, 14, 15, 16, 17, and 18, Block D, in said Angel Fire Addition,
TOGETHER with all of Kessler Cir. as dedicated in said Angel Fire Addition,
TOGETHER with that part of Reserve "B", Angel Fire Addition,
lying northwesterly of and abutting the following described curve:
Beginning at the southwest corner of Lot 1, Block D, in said Angel Fire
Addition; thence southwesterly along a curve to the left, through a central
angle of 15°1'33" and having a radius of 232.00 feet, an arc distance of
64.22 feet, (having a chord length of 64.01 feet bearing S38°34'40"W), to
the northeast corner of Lot 41, Block B, in said Angel Fire Addition, and
there ending, TOGETHER with that part of 45th St. South as dedicated in
said Angel Fire Addition lying northwesterly of and abutting the following
described curve: Beginning at the northeast corner of Lot 9, Block D, in
said Angel Fire Addition; thence northeasterly along a curve to the right,
through a central angle of 17°21'48" and having a radius of 212.00 feet,
an arc distance of 64.25 feet, (having a chord length of 64.00 feet
bearing N41°03'48"E), to the most southerly deflection corner in the south
line of Lot 13, Block B, in said Angel Fire Addition, and there ending.

Existing public easements and dedications
being vacated by virtue of K.S.A. 12-512(b).

Baughman Company, P.A.



Michael G. Conrey, Surveyor
15-2011

We, the undersigned holders of mortgages on the
above described property, do hereby consent to this plat of "ANGEL FIRE
2ND ADDITION", Wichita, Sedgwick County, Kansas.
Legacy Bank

Steve Gegen, SVP
STEVE GEGEN

State of Kansas) SS The foregoing instrument acknowledged before
Sedgwick County) me, this 8th day of December, 2011, by Steve Gegen,
SVP of Legacy Bank, on behalf of the bank.

Amy R. Stuhlsatz, Notary Public
AMY R. STUHLSTAZ

Know all men by these presents that we,
the undersigned, have caused the land in the surveyors certificate to be
platted into Lots, Blocks, and Streets, to be known as "ANGEL FIRE 2ND
ADDITION", Wichita, Sedgwick County, Kansas. The utility easements are
hereby granted as indicated for the construction and maintenance of all
public utilities. The drainage and utility easements are hereby granted as
indicated for drainage purposes and for the construction and maintenance
of all public utilities. The drainage easements are hereby granted as
indicated for drainage purposes. The drainage, utility, and pedestrian
access easement is hereby granted as indicated for drainage purposes, for
the construction and maintenance of all public utilities, and for public
pedestrian access purposes to or from Reserve "B", Angel Fire Addition,
Wichita, Sedgwick County, Kansas, and no fences or other obstructions
shall be constructed or placed on or within this easement. The streets
are hereby dedicated to and for the use of the public. The Minimum
Building Pad Elevations for the lowest opening to the structures shall be
as indicated on the face of the plat.

Caywood, L.L.C., a Kansas limited liability company

Matthias F. Eck, Manager
MATTHIAS F. ECK

State of Kansas) SS The foregoing instrument acknowledged before
Sedgwick County) me, this 8th day of December, 2011, by Matthias F. Eck, Manager of the
Caywood, L.L.C., a Kansas limited liability company, on behalf of the
limited liability company.

Judith M. Terhune, Notary Public
JUDITH M. TERHUNE

This plat of "ANGEL FIRE 2ND ADDITION",
Wichita, Sedgwick County, Kansas has been submitted to and approved
by the Wichita-Sedgwick County Metropolitan Area Planning Commission,
Wichita, Kansas.

Dated this _____ day of _____,
Wichita-Sedgwick County Metropolitan Area Planning Commission

Shawn Farney, Chair

John L. Schlegel, Secretary

This plat approved and all dedications
shown hereon accepted by the City Council of the City of Wichita,
Kansas, this _____ day of _____.

Carl Brewer, Mayor

Karen Sublett, City Clerk

Reviewed in accordance with K.S.A. 58-2005
on this _____ day of _____.

Tricia L. Robello, L.S. #1246
Deputy County Surveyor
Sedgwick County, Kansas

Entered on transfer record this _____ day
of _____.

Kelly B. Arnold, County Clerk

State of Kansas) SS This is to certify that this plat has been
Sedgwick County) filed for record in the office of the Register of Deeds, this _____ day
of _____ at _____ o'clock _____ M; and is duly recorded.

Bill Meek, Register of Deeds

Tonya Buckingham, Deputy

NOTE:
A master grading plan for drainage has been developed for this
subdivision and is on file with the City of Wichita, Kansas. All
drainage easements, rights-of-way, or reserves shall remain at
established grades or as modified with the approval of the City
Engineer of the City of Wichita, Kansas. No obstructions which
impede the flow of this drainage system shall be allowed.

