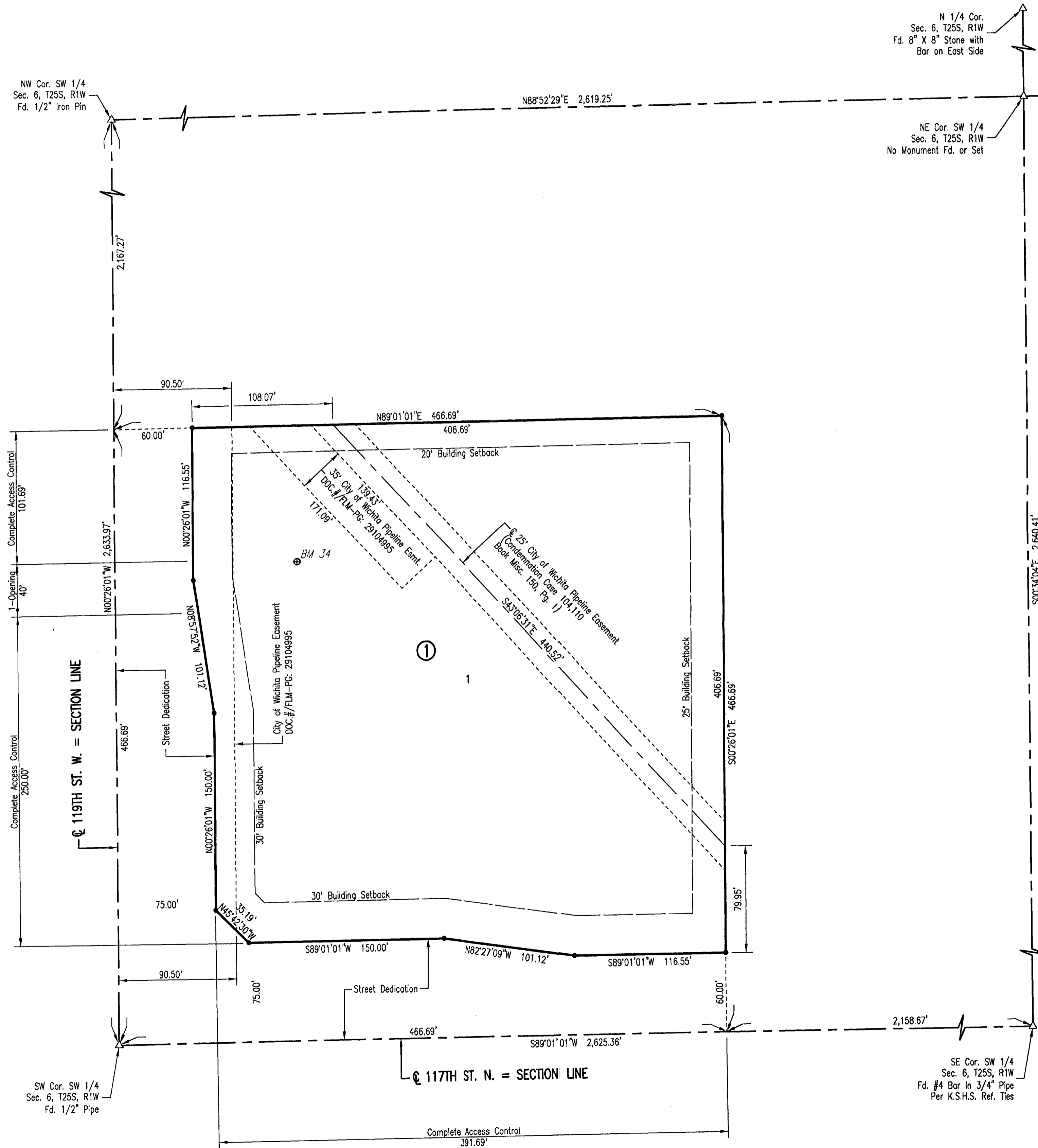


FINAL TRACING REC'D 5-4-11

ASR M-34 WELL SITE ADDITION

AN ADDITION TO SEDGWICK COUNTY, KANSAS



N 1/4 Cor. Sec. 6, T25S, R1W
Fd. 8" X 8" Stone with Bar on East Side

E 1/4 Cor. Sec. 6, T25S, R1W
Fd. 1" Pipe
Unknown Origin
Per Sedgwick County Ref. Ties

NE Cor. SW 1/4 Sec. 6, T25S, R1W
No Monument Fd. or Set

SCALE: 1" = 50'

- = 1/2" REBAR W/PEC CAP UNLESS OTHERWISE NOTED
- △ = SECTION CORNER

BENCHMARKS

BM 34

A CHISELED SQUARE ON THE SOUTHWEST CORNER OF A CONCRETE WELL PUMP BASE, LOCATED AT THE CITY OF WICHITA WELL HOUSE #34 AT THE NORTHEAST CORNER OF THE INTERSECTION OF 117TH ST. NORTH, AND 119TH ST. WEST, IN SEDGWICK COUNTY.

ELEV. 1383.40 NAVD88

STATE OF KANSAS)
COUNTY OF SEDGWICK) SS

WE, PROFESSIONAL ENGINEERING CONSULTANTS, P.A., ENGINEERS AND SURVEYORS IN AFORESAID STATE AND COUNTY, DO HEREBY CERTIFY THAT ON THIS 20th DAY OF May, 2011, WE HAVE SURVEYED AND PLATTED ASR M-34 WELL SITE ADDITION, AN ADDITION TO SEDGWICK COUNTY, KANSAS, INTO A LOT, AND A BLOCK. THE SAME BEING DESCRIBED AS FOLLOWS:

THE SOUTH 466.69 FEET OF THE WEST 466.69 FEET OF THE SOUTHWEST QUARTER OF SECTION 6, TOWNSHIP 25 SOUTH, RANGE 1 WEST, OF THE 6TH P.M., SEDGWICK COUNTY, KANSAS.

ALL PUBLIC EASEMENTS LYING WITHIN THE ABOVE DESCRIBED TRACT OF LAND ARE HEREBY VACATED AND REPLACED BY VIRTUE OF KSA 12-512(b) AMENDED.

JAMES R. BECKETT
REGISTERED PROFESSIONAL ENGINEER AND SURVEYOR
K.S. 832
James R. Beckett

JAMES R. BECKETT, R.L.S. NO. 832
PROFESSIONAL ENGINEERING CONSULTANTS, P.A.

A DRAINAGE PLAN HAS BEEN APPROVED FOR THIS PLAT. ALL DRAINAGE EASEMENTS, RESERVES, AND RIGHTS-OF-WAY SHALL REMAIN AT ESTABLISHED GRADES AND UNOBSTRUCTED TO ALLOW FOR THE CONVEYANCE OF STORMWATER, UNLESS MODIFIED WITH THE APPROVAL OF THE COUNTY ENGINEER.

THE STREETS ARE HEREBY DEDICATED TO AND FOR THE USE OF THE PUBLIC.

ACCESS CONTROLS AS INDICATED ARE HEREBY GRANTED TO THE APPROPRIATE GOVERNING BODY AND SHALL BE IN ACCORDANCE WITH THE SEDGWICK COUNTY ACCESS MANAGEMENT STANDARDS.

KNOW ALL MEN BY THESE PRESENTS THAT WE, THE UNDERSIGNED PROPERTY OWNERS OF THE LAND AS ABOVE SET FORTH IN THE SURVEYOR'S CERTIFICATE, HAVE CAUSED THE LAND TO BE SURVEYED AND PLATTED INTO A LOT, AND A BLOCK. THE SAME TO BE KNOWN AS ASR M-34 WELL SITE ADDITION, AN ADDITION TO SEDGWICK COUNTY, KANSAS.

OWNER(S):
CITY OF WICHITA, KANSAS MUNICIPAL CORPORATION

CARL BREWER, MAYOR

STATE OF KANSAS)
COUNTY OF SEDGWICK) SS

THIS INSTRUMENT WAS ACKNOWLEDGED BEFORE ME ON _____, 2011,
BY CARL BREWER, MAYOR, CITY OF WICHITA, KANSAS, MUNICIPAL CORPORATION.

_____, NOTARY PUBLIC

MY APPOINTMENT EXPIRES:

THIS PLAT OF ASR M-34 WELL SITE ADDITION HAS BEEN SUBMITTED TO AND APPROVED BY THE WICHITA-SEDGWICK COUNTY METROPOLITAN AREA PLANNING COMMISSION, WICHITA, KANSAS.

DATED THIS ____ DAY OF _____, 2011.

WICHITA-SEDGWICK COUNTY METROPOLITAN AREA PLANNING COMMISSION

DEBRA MILLER STEVENS, CHAIR

JOHN L. SCHLEGEL, SECRETARY

REVIEWED IN ACCORDANCE WITH K.S.A. 58-2005 ON THIS ____ DAY

OF _____, 2011.

TRICIA L. ROBELLO, LS #1246
DEPUTY COUNTY SURVEYOR
SEDGWICK COUNTY KANSAS

THIS PLAT IS APPROVED AND ALL DEDICATIONS SHOWN HEREON, IF ANY, ARE ACCEPTED BY THE BOARD OF COUNTY COMMISSIONERS OF SEDGWICK COUNTY, KANSAS, THIS ____ DAY OF _____, 2011.

DAVID M. UNRUH, CHAIRMAN

KELLY B. ARNOLD, COUNTY CLERK

ENTERED ON TRANSFER RECORD THIS ____ DAY OF _____, 2011.

KELLY B. ARNOLD, COUNTY CLERK

THIS IS TO CERTIFY THAT THIS INSTRUMENT WAS FILED FOR RECORD IN THE REGISTER OF DEEDS OFFICE AT ____ A.M. - P.M., ON THE ____ DAY OF _____, 2011.

BILL MEEK, REGISTER OF DEEDS

TONYA BUCKINGHAM, DEPUTY

Saved 05-03-2011 12:00:49 PM by JTS
Plat Scale 1:50 05-03-2011 2:25:35 PM by JTS
C:\Users\jts\Documents\ASR Plans\07268-005 Final M-34