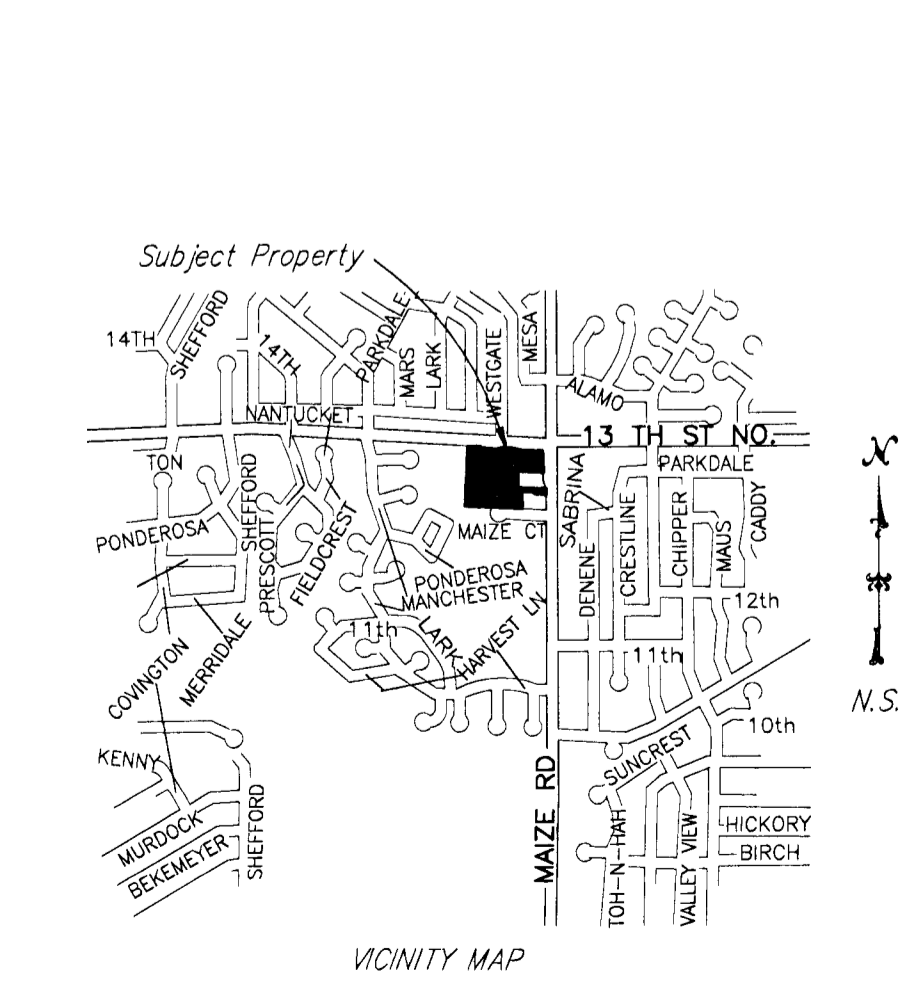
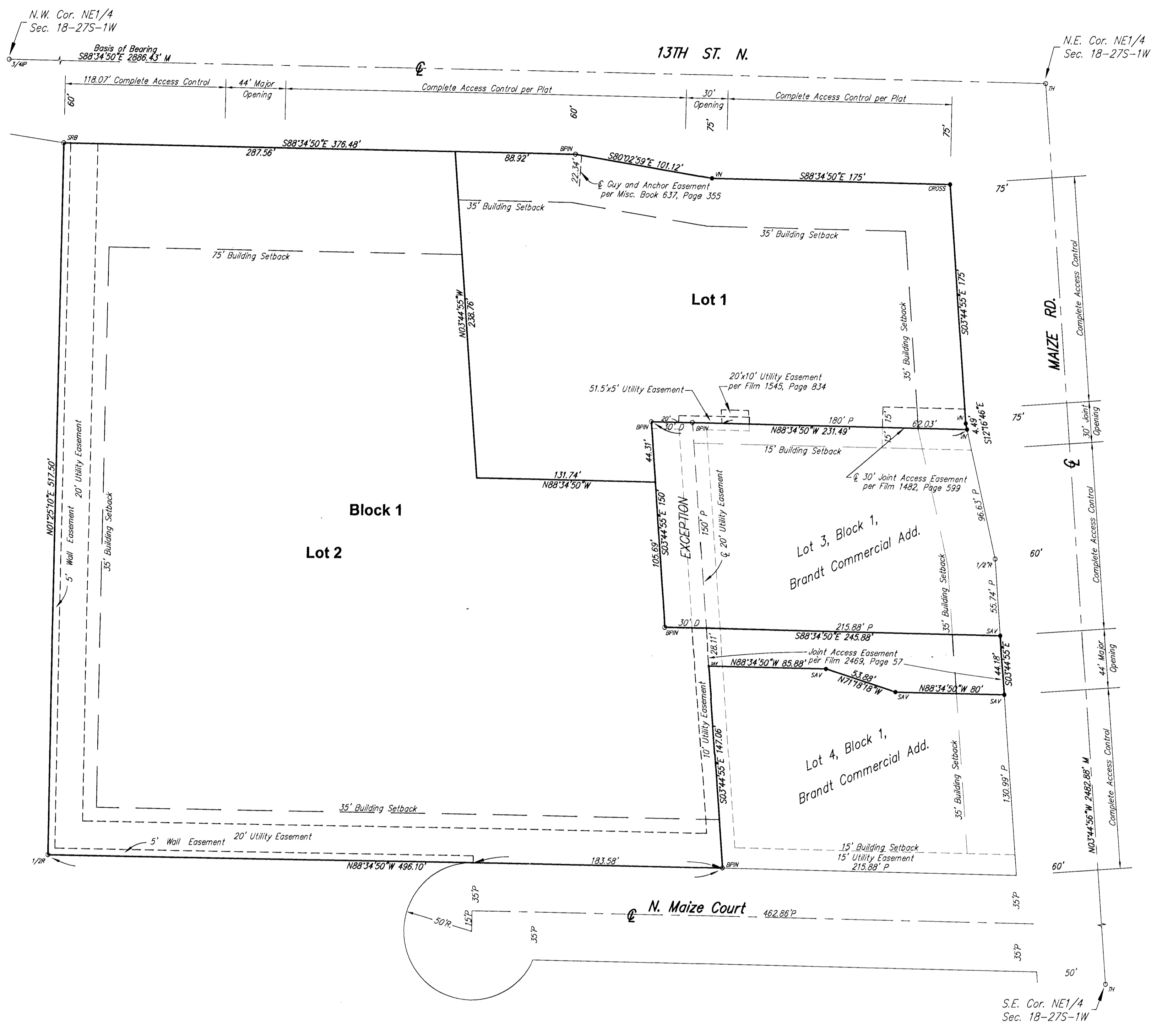


BRANDT COMMERCIAL 2ND ADDITION

TO WICHITA, SEDGWICK COUNTY, KANSAS



Note: For Additional Building Setback Requirements See Associated Community Unit Plan DP-214.

State of Kansas) SS
Sedgwick County)

We, Savoy Company, P.A., Surveyors in aforesaid county and state do hereby certify that, under the supervision of the undersigned, we have surveyed and platted "BRANDT COMMERCIAL 2ND ADDITION" to Wichita, Sedgwick County, Kansas and that the accompanying plat is a true and correct exhibit of the property surveyed, described as, and being a replat of:

Lots 1, 2 and 5, Block 1, Brandt Commercial Addition, to Wichita, Sedgwick County, Kansas, except that part of Lot 5 described as beginning at the Southwest corner of Lot 3, in said Block 1; thence N88°34'50"W, along the South line of said Lot 3 extended West, a distance of 30.00 feet; thence N03°44'55"W, parallel with the West line of said Lot 3, 150.00 feet to a point on the South line of said Lot 1; thence S88°34'50"E, along the South line of said Lot 1, 30.00 feet to the Northwest corner of said Lot 3; thence S03°44'50"E, along the West line of said Lot 3, 150.00 feet to the point of beginning.

All Public easements and dedications being vacated by virtue of K.S.A. 12-512(b).
Savoy Company, P.A.

Date _____
Mark A. Savoy RLS #788 Surveyor

Know all men by these presents that We, the undersigned, have caused the land described in the surveyors certificate to be platted into Lots and a Block to be known as "BRANDT COMMERCIAL 2ND ADDITION" to Wichita, Sedgwick County, Kansas. The utility easements are hereby granted for the construction and maintenance of all public utilities. A drainage plan has been developed for this plat and all drainage easements, rights-of-way, or reserves shall remain at established grades, or as modified with the approval of the City Engineer, and unobstructed to allow for the conveyance of stormwater. Access Control is hereby granted as shown on face of the Plat.

Thirteenth & Maize LLC
_____ Managing Member
Rising Properties LLC
_____ Managing Member

State of Kansas) SS
Sedgwick County)

The foregoing instrument acknowledged before me, this described property, do hereby consent to this plat of "BRANDT COMMERCIAL 2ND ADDITION", this _____ day of _____, 2012, by _____ Managing Member of Thirteenth & Maize LLC, a Kansas limited liability company, on behalf of the company.

Notary Public

My App't. Exp. _____

State of Kansas) SS
Sedgwick County)

The foregoing instrument acknowledged before me, this described property, do hereby consent to this plat of "BRANDT COMMERCIAL 2ND ADDITION", this _____ day of _____, 2012, by _____ Managing Member of Rising Properties LLC, a Kansas limited liability company, on behalf of the company.

Notary Public

My App't. Exp. _____

We, the undersigned, holders of a mortgage on the above Sedgwick County, Kansas.
Home Bank & Trust Co.

State of Kansas) SS
Sedgwick County)

The foregoing instrument acknowledged before me, this day of _____, 2012, by _____ of Home Bank & Trust Co., on behalf of the Bank.

My App't. Exp. _____ Notary Public

This plat of "BRANDT COMMERCIAL 2ND ADDITION", Wichita, Sedgwick County, Kansas, has been submitted to and approved by the Wichita-Sedgwick County Metropolitan Area Planning Commission, Wichita, Kansas.

Dated this _____ day of _____, 2012.
Wichita-Sedgwick County Metropolitan Area Planning Commission

_____ Chair
Shawn Farney

_____ Secretary
John L. Schiegel

This plat approved and all dedications shown hereon, accepted by the City Council of the City of Wichita, Kansas, this day of _____, 2012.

_____ Mayor
Carl Brewer

_____ City Clerk
Karen Sublett

Reviewed in accordance with K.S.A. 58-2005 on this day of _____, 2012.

_____ Deputy County Surveyor
Sedgwick County Kansas
Tricia L. Robello, LS #1246

Entered on transfer record this _____ day of _____, 2012.

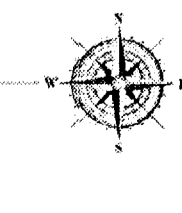
_____ County Clerk
Kelly B. Arnold

State of Kansas) SS
Sedgwick County)

This is to certify that this plat has been filed for record in the office of the Register of Deeds, this _____ day of _____, 2012, at o'clock _____ M. and is duly recorded.

_____ Register of Deeds
Bill Meek

_____ Deputy
Tonya Buckingham



Savoy Company, P.A.
Land Surveyors

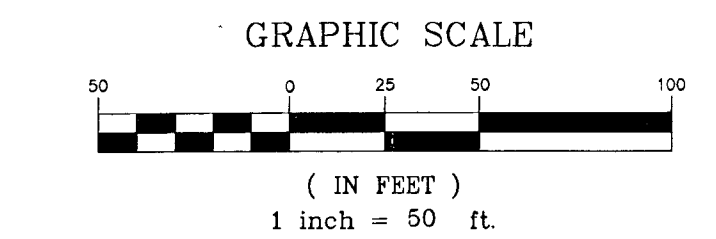
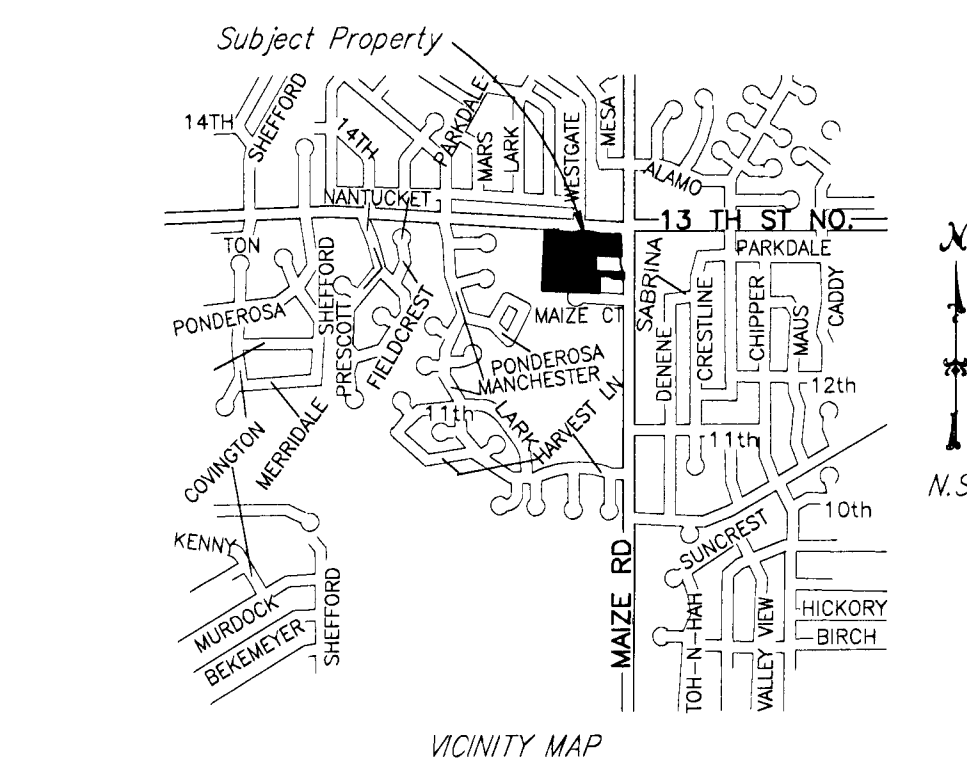
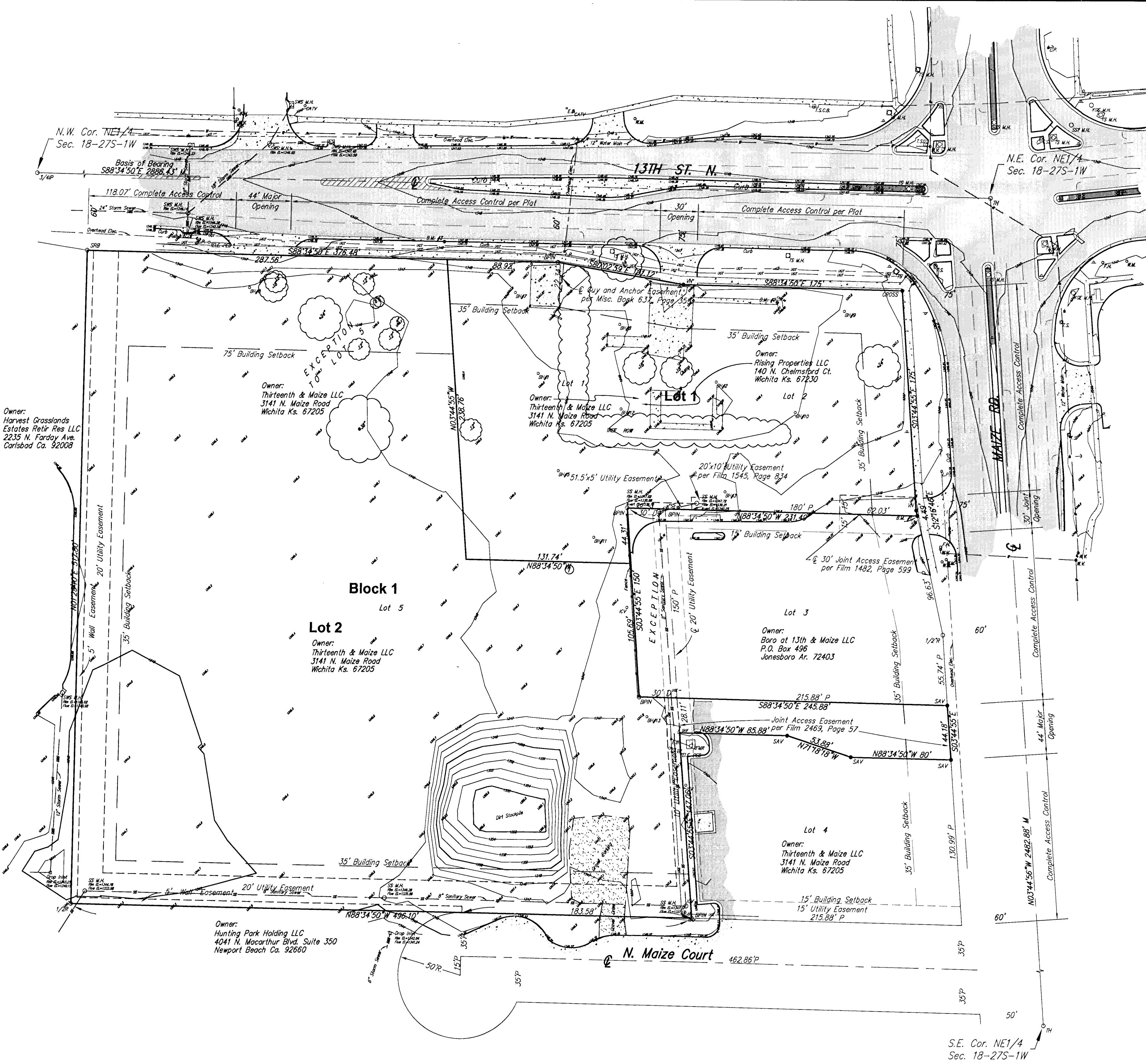
PH (316) 265-0005
FAX (316) 265-0275

433 S. Hydraulic, Wichita, KS 67211-1911
www.savoyco.com

PROJECT NO. 120D12850 P

BRANDT COMMERCIAL 2ND ADDITION

TO WICHITA, SEDGWICK COUNTY, KANSAS



Note: For Additional Building Setback Requirements See Associated Community Unit Plan DP-214.

State of Kansas) SS
Sedgwick County)

We, Savoy Company, P.A., Surveyors in aforesaid county and state do hereby certify that, under the supervision of the undersigned, we have surveyed and platted "BRANDT COMMERCIAL 2ND ADDITION" to Wichita, Sedgwick County, Kansas and that the accompanying plat is a true and correct exhibit of the property surveyed, described as, and being a replat of:

Lots 1, 2 and 5, Block 1, Brandt Commercial Addition, to Wichita, Sedgwick County, Kansas, except that part of Lot 5 described as beginning at the Southwest corner of Lot 3, in said Block 1; thence N88°34'50"W, along the South line of said Lot 3 extended West, a distance of 30.00 feet; thence N03°44'55"W, parallel with the West line of said Lot 3, 150.00 feet to a point on the South line of said Lot 1; thence S88°34'50"E, along the South line of said Lot 1, 30.00 feet to the Northwest corner of said Lot 3; thence S03°44'50"E, along the West line of said Lot 3, 150.00 feet to the point of beginning.

All Public easements and dedications being vacated by virtue of K.S.A. 12-512(b).

Savoy Company, P.A.
Date _____ Surveyor
Mark A. Savoy RLS #788

Know all men by these presents that We, the undersigned, have caused the land described in the surveyors certificate to be platted into Lots and a Block to be known as "BRANDT COMMERCIAL 2ND ADDITION" to Wichita, Sedgwick County, Kansas. The utility easements are hereby granted for the construction and maintenance of all public utilities. A drainage plan has been developed for this plat and all drainage easements, rights-of-way, or reserves shall remain at established grades, or as modified with the approval of the City Engineer, and unobstructed to allow for the conveyance of stormwater. Access Control is hereby granted as shown on face of the Plat.

Thirteenth & Maize LLC
Managing Member
Rising Properties LLC
Managing Member

State of Kansas) SS
Sedgwick County)

The foregoing instrument acknowledged before me, this described property, do hereby consent to this plat of "BRANDT COMMERCIAL 2ND ADDITION", this _____ day of _____, 2012, by _____ Managing Member of Thirteenth & Maize LLC, a Kansas limited liability company, on behalf of the company.

Notary Public
My App't. Exp. _____

State of Kansas) SS
Sedgwick County)

The foregoing instrument acknowledged before me, this described property, do hereby consent to this plat of "BRANDT COMMERCIAL 2ND ADDITION", this _____ day of _____, 2012, by _____ Managing Member of Rising Properties LLC, a Kansas limited liability company, on behalf of the company.

Notary Public
My App't. Exp. _____

We, the undersigned, holders of a mortgage on the above Sedgwick County, Kansas.
Home Bank & Trust Co.

State of Kansas) SS
Sedgwick County)

The foregoing instrument acknowledged before me, this _____ day of _____, 2012, by _____ of Home Bank & Trust Co., on behalf of the Bank.

Notary Public
My App't. Exp. _____

This plat of "BRANDT COMMERCIAL 2ND ADDITION", Wichita, Sedgwick County, Kansas, has been submitted to and approved by the Wichita-Sedgwick County Metropolitan Area Planning Commission, Wichita, Kansas.

Dated this _____ day of _____, 2012.
Wichita-Sedgwick County Metropolitan Area Planning Commission

Chair
Shawn Farney
Secretary
John L. Schiegel

This plat approved and all dedications shown hereon, accepted by the City Council of the City of Wichita, Kansas, this _____ day of _____, 2012.

Mayor
Carl Brewer
City Clerk
Karen Sublett

Reviewed in accordance with K.S.A. 58-2005 on this _____ day of _____, 2012.

Deputy County Surveyor
Sedgwick County Kansas
Tricia L. Robello, LS #1246

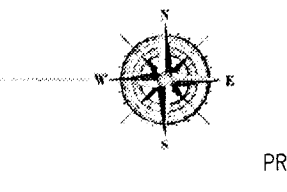
Entered on transfer record this _____ day of _____, 2012.

County Clerk
Kelly B. Arnold

State of Kansas) SS
Sedgwick County)

This is to certify that this plat has been filed for record in the office of the Register of Deeds, this _____ day of _____, 2012, at o'clock _____ M: and is duly recorded.

Register of Deeds
Bill Meek
Deputy
Tonya Buckingham



Savoy Company, P.A.
Land Surveyors
433 S. Hydraulic, Wichita, KS 67211-1911
www.savoyco.com
PH (316) 265-0005
FAX (316) 265-0275

PROJECT NO. 120012850 P