

Revised Preliminary Plat BRUCE HARRIS ADDITION

WICHITA, SEDGWICK COUNTY, KANSAS

LEGAL DESCRIPTION:

The west 250 feet of Lot 37, except the South 60 feet thereof and except the North 30 feet thereof, Knight Acres, Sedgwick County, Kansas, except the West 20 feet thereof for Street.

OWNER:
Harris3, LLC, a Kansas limited liability company
Bruce R. Harris, Manager
1223 N. Rock Rd, Bldg G, Ste 300
Wichita, Ks 67206

Ph: 316-440-5900

GROSS AREA: 40300.57 Sq. Ft.
0.93 Acres

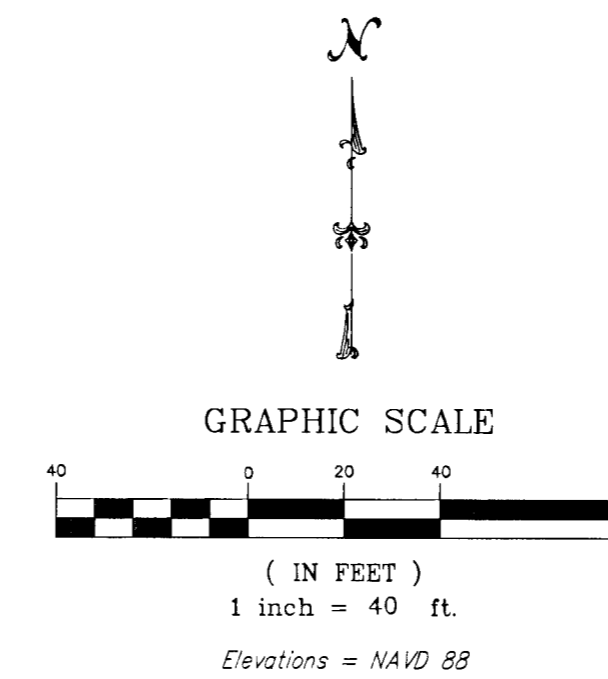
NET AREA: 40300.57 Sq. Ft.
0.93 Acres

EXISTING ZONING: B & SF20

PROPOSED ZONING: LC

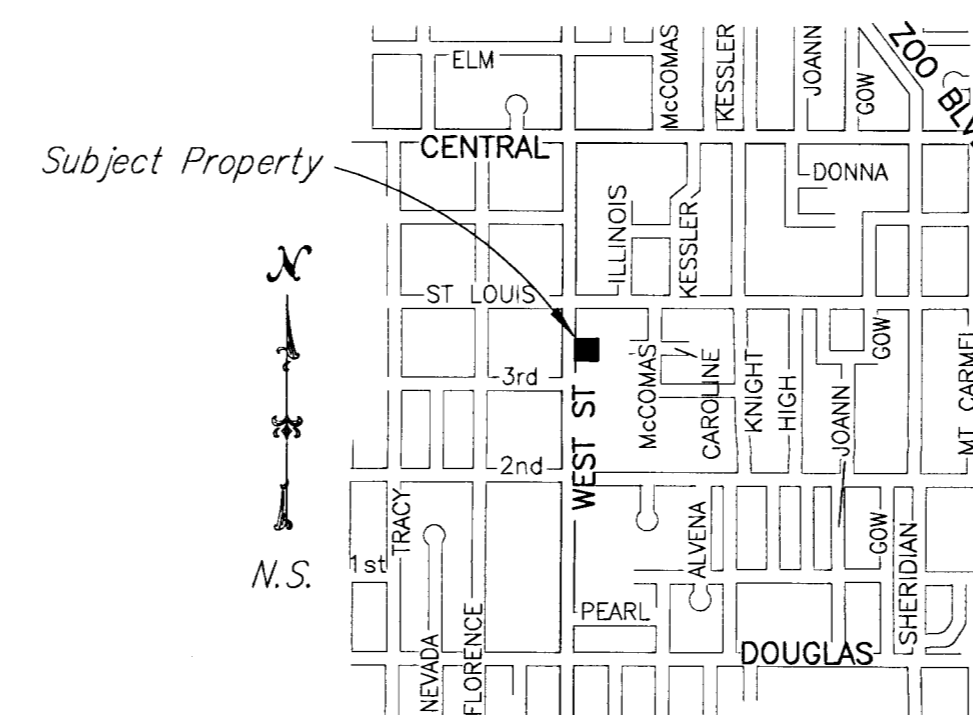
CONTROL NO'S: 210232 & 210229

NOTE: Existing Structures to be removed.



SITE BENCH MARK:
Square "□" cut top of curb
19.4' West and 36.2' North of
the NW Corner Subject Property
Elevation = 1307.56 (NAVD 88)

- LEGEND**
- G = GAS MAIN
 - W = WATER MAIN
 - SS = SANITARY SEWER
 - OHE = OVERHEAD ELECTRIC
 - SWS = STORM WATER SEWER
 - UGT = UNDER GROUND TELEPHONE
 - TELE. PED TELEPHONE PEDESTAL
 - E.B. ELECTRIC BOX
 - G.M. GAS METER
 - W.M. WATER METER
 - W.V. WATER VALVE
 - F.H. FIRE HYDRANT
 - M.W. MONITOR WELL
 - C.O. CLEAN OUT
 - L.P. LIGHT POLE
 - POWER POLE
 - HIGH LINE POLE
 - ← GUY ANCHOR
 - 4 SIGN
 - G.P. GUARD POST
 - SWS M.H. STORM WATER SEWER MANHOLE
 - SS M.H. SANITARY SEWER MANHOLE
 - G.P. GUY POLE



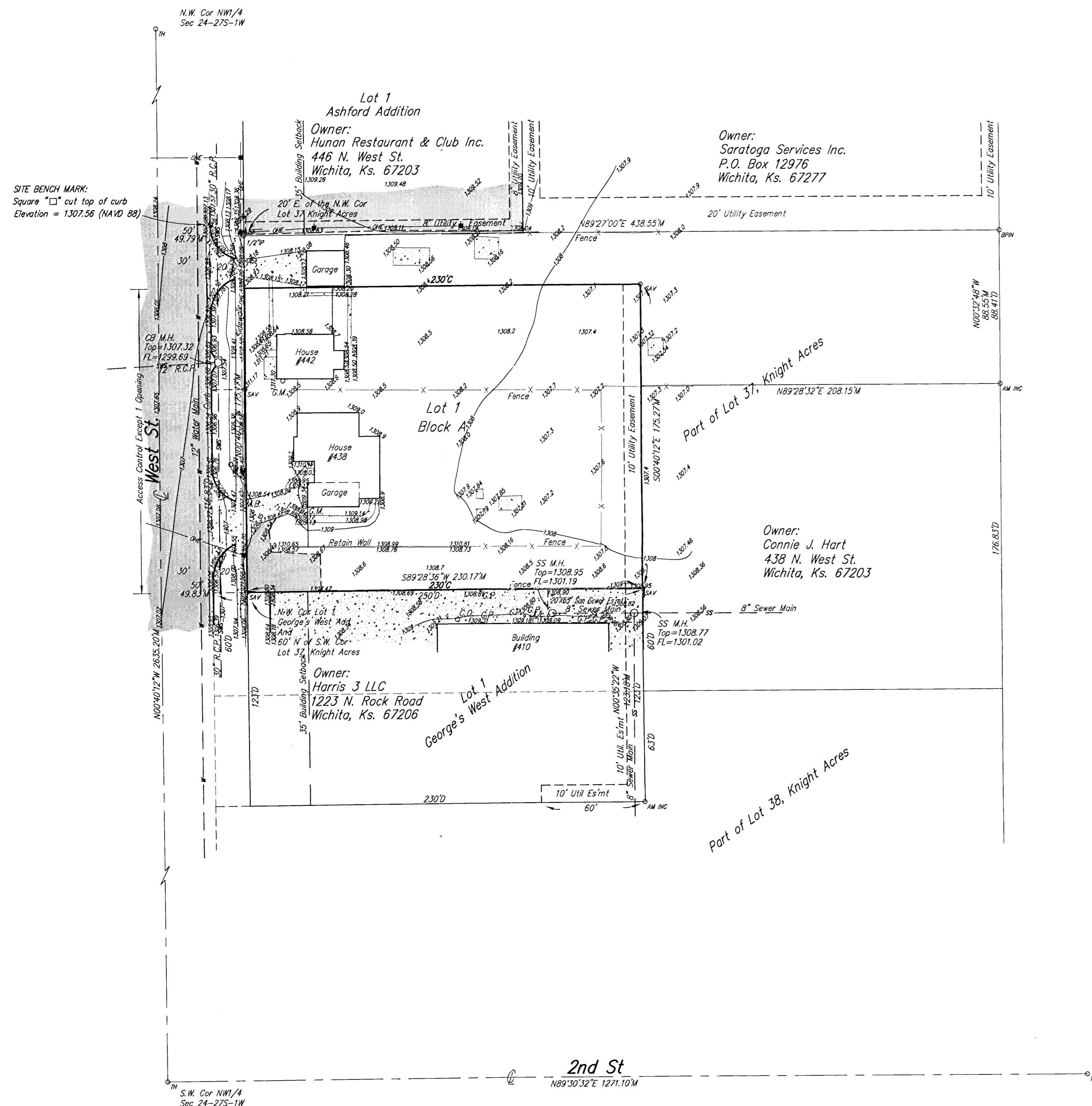
VICINITY MAP

NOTE:

Location of all utilities shown on this drawing, reflect the best information available, consisting of both field observation and information from the records of the various utility companies. Before completing any final design or beginning any excavation on this site, contact the appropriate utility companies for verification of the utility locations.

Kansas One-Call

687-2470



1.0000000000

PROJECT NO. 120012837 P



Savoy Company, P.A.
Land Surveyors

433 S. Hydraulic, Wichita, KS 67211-1911

PH (316) 265-0005
FAX (316) 265-0275

www.savoyco.com

30 APRIL 2012
19 APRIL 2012