

CERTIFICATE OF SURVEY

I, Gregory J. Allison, a registered land surveyor in Kansas, do hereby certify that I have been in responsible charge of surveying and platting of "BEHNKE ADDITION," an addition to Wichita, Sedgwick County, Kansas, into Lots, a Block, a Reserve, and a Street, the same being accurately set forth in the accompanying plat and described herein:

BEGINNING at a point 2006 feet South and 198.25 feet East of the Northwest corner of Section 9, Township 28 South, Range 1 East of the 6th P.M., and on the East line of the C.R.I. and P.R.R. Railway right of way; thence in an Easterly direction 728.25 feet; thence with an included angle of 75°48'30" in a Southwesterly direction 644.25 feet to the old hedge line or South line of Government Lot 9 as established by District Court Order #19897; thence West parallel to the above described North line 703.75 feet to a point on the East line of highway right of way; thence North along said highway right of way 92 feet to a point the East line of said railroad right of way; thence Northeasterly along the East line of the railroad right of way 549.55 feet more or less to the POINT OF BEGINNING, EXCEPT the South 30 feet thereof for road easement as described in Book of Miscellaneous No. 175, Page 187.

All streets, easements, setbacks, access controls, together with a Water Easement recorded DOC.#/FLM-PG. 28609202, together with a Flood Protection Levee Easement recorded DOC.#/FLM-PG. 29101891, together with any and all other public dedications within the above described property are hereby vacated and replatted by virtue of K.S.A. 12-512b.

I hereby certify that the details of this plat are correct to the best of my knowledge and belief this ___ day of _____, 2012.



Gregory J. Allison, PE, LS #1257
MKEC Engineering Consultants, Inc.
411 North Webb Road
Wichita, Kansas 67206

OWNER'S CERTIFICATES

Know all men by these presents that we the undersigned property owners of the land above set forth in the Registered Land Surveyor's Certificate, have caused the same to be surveyed and platted into Lots, a Block, a Reserve, and a Street, the same to be known as "BEHNKE ADDITION," an addition to Wichita, Sedgwick County, Kansas.

The streets are hereby dedicated to and for the use of the public.

Easements for the construction and maintenance of public utilities and drainage, as indicated hereon, are hereby granted to the public. The Temporary Street Easement is hereby granted to the public and shall remain effective as a temporary turnaround until a public street and turnaround is extended to the east. Upon the recoding of a public street dedication extending east of the east line, the Temporary Street Easement shall be automatically released and vacated.

Reserves "A" is platted for drainage, landscaping, open space, and uses permitted by the Zoning that are not in conflict with the conveyance of stormwater, and utilities confined by easement(s) or rights-of-way. The Reserve shall be owned and maintained by the City of Wichita.

A drainage plan has been developed for this plat. All drainage easements, rights-of-ways, or reserves shall remain at established grades or as modified with the approval of the applicable City or County Engineer, and unobstructed to allow for the conveyance of storm water.

CITY OF WICHITA
At the direction of City Council

_____, Mayor
Carl Brewer, Mayor

STATE OF KANSAS, SEDGWICK COUNTY} ss:

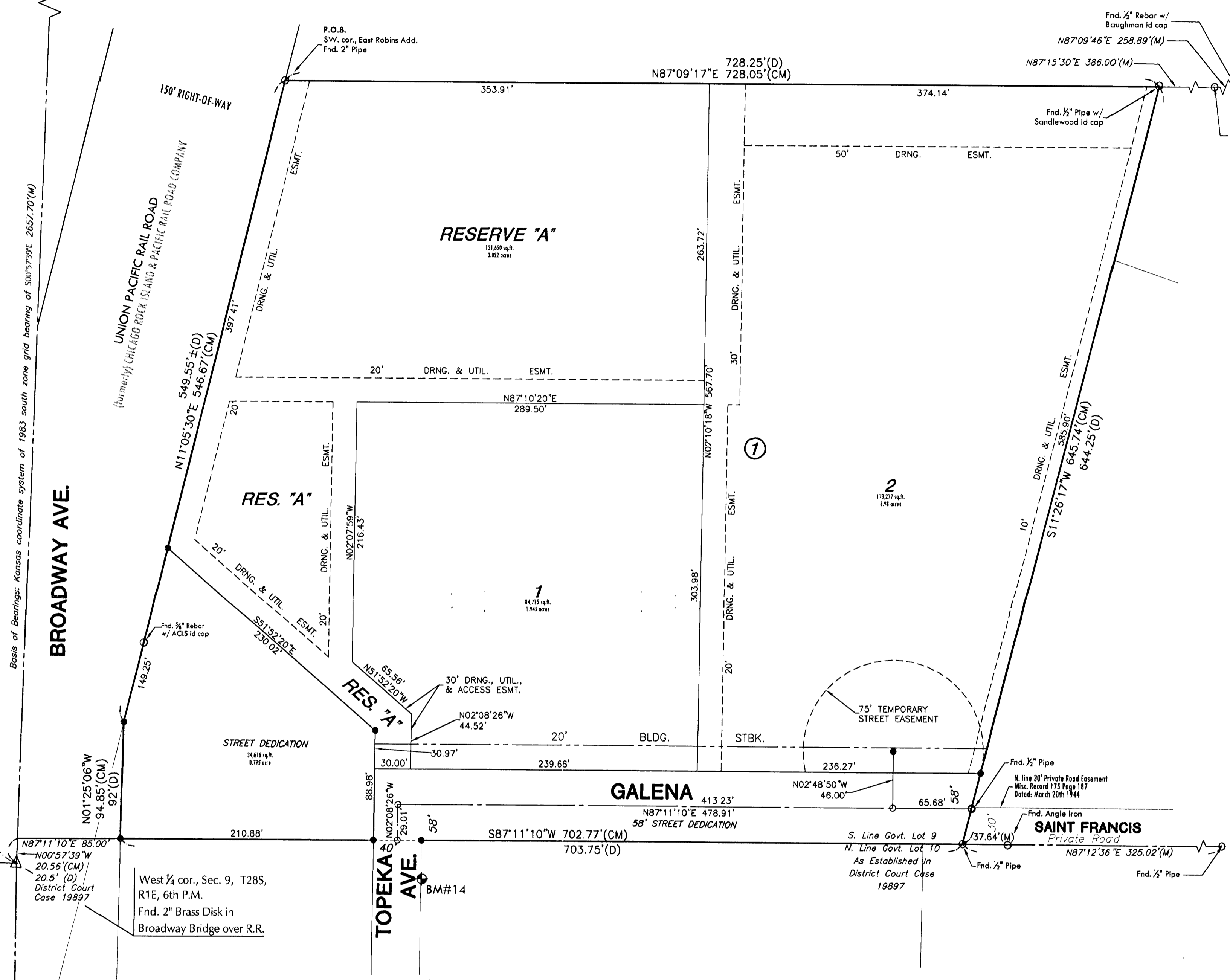
This instrument was acknowledged before me on ___ day of _____, 2012, by Carl Brewer, Mayor, City of Wichita.

IN WITNESS WHEREOF, I have hereunto set my hand and affixed my official seal, the day and year last above written.

_____, Notary Public
Notary Public:
My Term Expires: _____

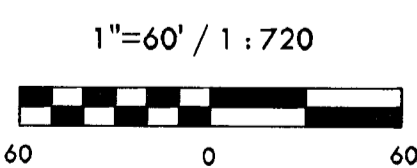
FINAL TRACING REC'D 6-7-2012

FINAL PLAT
BEHNKE ADDITION
AN ADDITION TO WICHITA, SEDGWICK COUNTY, KANSAS



LEGEND

- Date of Survey: May, 2010
- △ = Section Corner Monument Found
- = Found survey monument see annotation for type
- = Set 3/4" rebar w/ MKEC CLS 39 id. cap
- (M) = Measured
- (CM) = Calculated from measured
- (D) = Described



Basis of Bearing: Kansas coordinate system of 1983 south zone grid bearing of S00°57'39"E along the W. line of NW 1/4, Sec. 9, T28S, R1E, 6th P.M.

This plat is surveyed and platted on NAVD88-09 using Kansas state plane south zone coordinates, modified to the surface, having a combined adjustment scale factor of 1.000120014401728

BENCH MARK

BM #14 Northwest bolt of top flange fire hydrant on southeast corner Galena Street and Topeka, 7.8' West of east right of way of Topeka and 34.9' South of north line Government Lot 10 in Section 9, Township 28 South, Range 1 East. Elev. = 1284.42 NAVD 88.

MINIMUM PAD ELEVATIONS LOWEST OPENINGS		
LOTS	BLOCK	ELEVATION NAVD 88
1 and 2	1	1283.0

PLANNING COMMISSION CERTIFICATE

This plat of "BEHNKE ADDITION" has been submitted to and approved by the Wichita-Sedgwick County Metropolitan Area Planning Commission, Wichita, Kansas.

Dated this ___ day of _____, 2012

WICHITA-SEDGWICK COUNTY METROPOLITAN AREA PLANNING COMMISSION

_____, Chair
Shawn Farney, Chair

Attest: _____, Secretary
John L. Schlegel, Secretary

GOVERNING BODY CERTIFICATE

The dedications shown on this plat are hereby accepted and this plat is hereby approved by the governing body of the City of Wichita, Kansas.

Dated this ___ day of _____, 2012

At the direction of the City Council.

_____, Mayor
Carl Brewer, Mayor

Attest: _____, City Clerk
Karen Sublett, City Clerk

TRANSFER RECORD

STATE OF KANSAS, SEDGWICK COUNTY} ss:

Entered on transfer record this ___ day of _____, 2012

_____, County Clerk
Kelly B. Arnold, County Clerk

REGISTER OF DEEDS CERTIFICATE

STATE OF KANSAS, SEDGWICK COUNTY} ss:

This is to certify that this instrument was filed for record in the Register of Deeds office this ___ day of _____, 2012, at _____ o'clock ___ M; and is duly recorded.

_____, Register of Deeds
Bill Meek, Register of Deeds

Attest: _____, Deputy
Tonya E. Buckingham, Deputy

COUNTY SURVEYOR

STATE OF KANSAS, SEDGWICK COUNTY} ss:

Reviewed in accordance with K.S.A. 58-2005 on this ___ day of _____, 2012.

_____, Deputy County Surveyor
Tricia L. Robello, LS #1246
Deputy County Surveyor
Sedgwick County, Kansas



411 N. WEBB ROAD
WICHITA, K.S. 67206
316-684-9600

K:\CS\100811\Main\Add\100811-01.dwg 6/1/2012 11:54:04 AM CPT