

One-Step Final Plat Campbell Auto Addition Wichita, Sedgwick County, Kansas

Part of the SE 1/4, Section 5 & SW 1/4, Section 4,
 Township 28 South, Range 1 East of the 6th. P.M.

State of Kansas }
 County of Sedgwick } SS

State of Kansas }
 City of Wichita } SS

I, Bradley C. Ward, a licensed land surveyor of the State of Kansas, do hereby certify that the following described tract of land was surveyed on the 15th day of July, 2011 and the accompanying final plat prepared and that all the monuments shown herein actually exist and their positions are correctly shown to the best of my knowledge and belief:

This plat of Campbell Auto Addition, Wichita, Sedgwick County, Kansas, has been submitted to and approved by the Wichita-Sedgwick County Metropolitan Area Planning Commission, Wichita, day of Kansas. Dated this ____ day of _____, 2011.
 Wichita-Sedgwick County Metropolitan Area Planning Commission.

LEGAL DESCRIPTION

Beginning at a point 872.5 feet North of the Southwest Corner of Government Lot 4 in Section 4, Township 28 South, Range 1 East of the 6th Principal Meridian, Sedgwick County, Kansas; thence East parallel with the South line of said Lot 4, 220 feet; thence South parallel with the West line of said Lot 4, 187.5 feet; thence West parallel with the South line of said Lot 4, 279.75 feet, more or less, to the East line of U.S. 81 Highway; thence Northwesterly along said Highway to a point 872.5 feet North of the South line of said Lot 4; thence East 91.7 feet, more or less, to the place of beginning; EXCEPT that part dedicated for street in Misc. Book 237, Page 376; and EXCEPT the East 100 feet.

G. Nelson Van Fleet, Chair

John L. Schlegel, Secretary

State of Kansas }
 City of Wichita } SS

This plat approved and all dedications shown hereon accepted by the City Council of the City of Wichita, Kansas, this ____ day of _____, 2011.

At the Direction of the City Council

Carl Brewer, Mayor

Karen Sublett, City Clerk

Entered on transfer record this ____ day of _____, 2011.

Kelly B. Arnold, County Clerk

All easements and Rights of Way within said tract are hereby vacated by virtue of KSA 12-512(b) amended.

Bradley C. Ward, L.S. #920

State of Kansas }
 County of Sedgwick } SS

This is to certify that this plat has been filed for record in the Office of the Register of Deeds this ____ day of _____, 2011, at ____ o'clock ____ M; and is duly recorded.

Bill Meek, Register of Deeds

Tonya Buckingham, Deputy

Reviewed in accordance with K.S.A. 58-2005 on this ____ day of _____, 2011.

State of Kansas }
 County of Sedgwick } SS

Know all men by these presents, that we, the undersigned, have caused the land described in the surveyor's certificate to be platted into a Lot and Block, to be known as Campbell Auto Addition, Wichita, Sedgwick County, Kansas. Any easements are hereby granted as indicated for constructing, maintaining, operating, and repairing public utilities. A drainage plan has been developed for the plat and all drainage easements, rights-of-way, or reserves shall remain at established grades or as modified with the approval of the applicable City or County Engineer, and unobstructed to allow for the conveyance of And further that the land contained herein is held stormwater. and shall be conveyed subject to any applicable restrictions, reservations and covenants now on file or hereafter filed in the Office of the Register of Deeds of Sedgwick County, Kansas.

By: Ernie C. Dayon, owner Date

Tricia L. Robello, L.S. #1246
 Deputy County Surveyor
 Sedgwick County, Kansas

State of Kansas }
 County of Sedgwick } SS

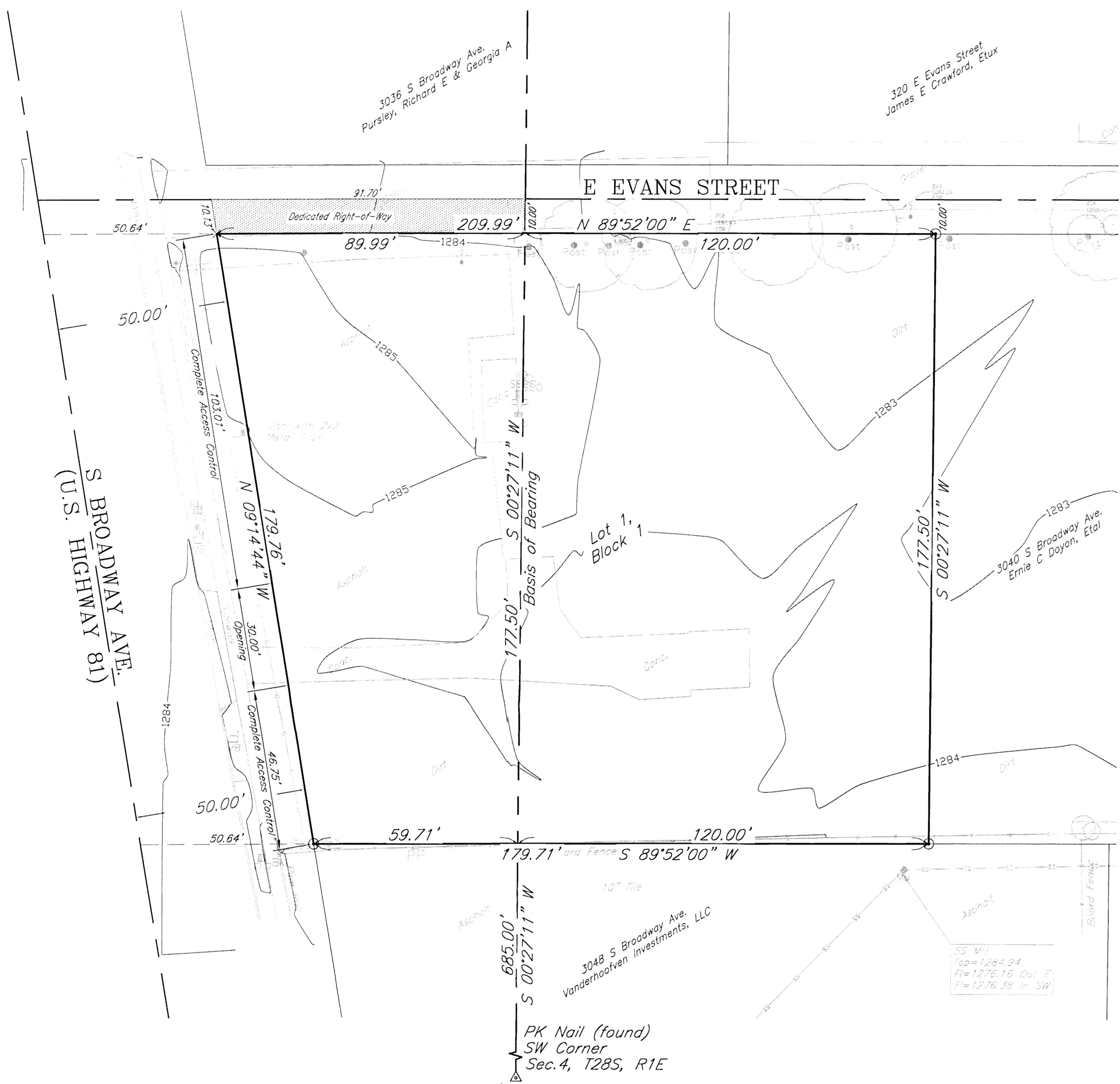
This instrument was acknowledged before me on this ____ day of _____, 2011, by Ernie C. Dayon, owner.

Notary Public

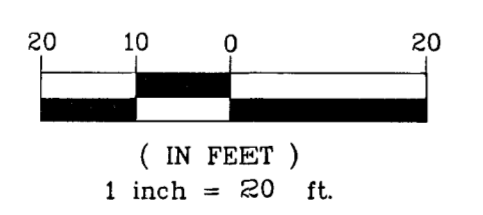
My Commission Expires: _____

Note: A drainage plan has been developed for the subdivision and all drainage easements, right-of-ways, or reserves shall remain at the established grades and unobstructed to allow for the conveyance of storm water.

Filename:



- LEGEND:**
- Light Pole
 - Guy Wire
 - Mail Box
 - Power Pole
 - Sign
 - Street Sign
 - Tree
 - Sanitary Sewer Manhole
 - Sanitary Sewer Cleanout
 - Fire Hydrant
 - Water Meter
 - Gas Line
 - Sanitary Sewer Line
 - Fence Line
 - 3/4" Rebar KEMPA (set)
 - PK NAIL (found)
 - X cut in Concrete (set)



NOTES:
 Utility locations are from Kansas One-Call.

BENCHMARK:
 City of Wichita disc on the Northwest corner of the intersection of Broadway and 31st Street South, approximately 45 feet West and 42 feet North of Centerlines.

Elevation= 1281.12 NAVD 88

