

NOTES

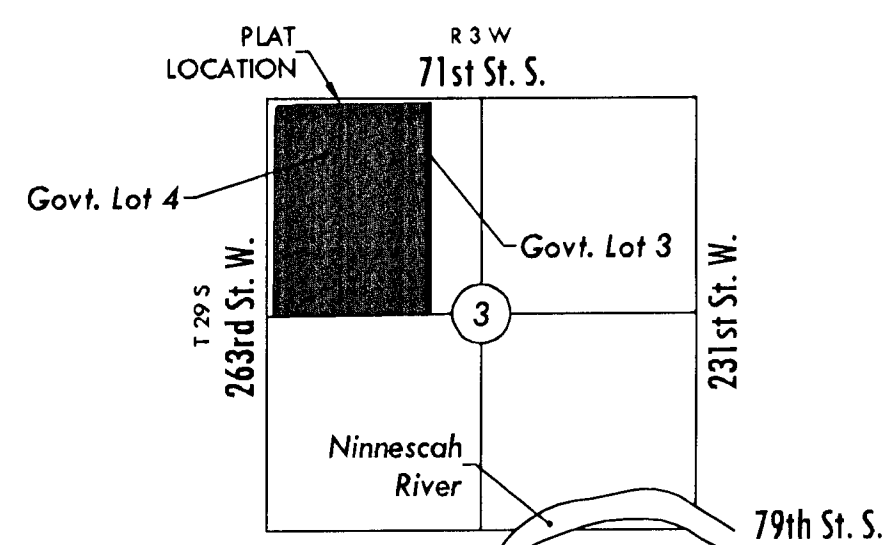
1. LOCATION: In the southwest part of Sedgwick County, lying five miles north of Viola, KS at the intersection of West 263rd Street and 71st Street South in an rural area. The property has access to K-42 via 71st Street South. Existing surrounding land uses include rural residential and agricultural production.
2. LOT TOTAL - 1
3. ANNEXATION: Unincorporated
4. EXISTING USE: Youth Day Camp / Event Facility / Outdoor Recreation
5. ZONING: Existing RR Proposed - PUD
6. PLAT AREA: Gross - 126.130 Ac.
Net - 119.529 Ac.
7. SURVEY DATE: Nov. 11th, 2011 (by MKEC) 2' Contours by LIDAR (City of Wichita)
8. PUBLIC UTILITIES: None
9. LEGAL DESCRIPTION: As described hereon
10. ACCESS CONTROLS: As shown hereon
11. RESERVES: None
12. FLOOD: According to FEMA FIRM Community Unit Panel 20173C0450E, Effective Date Feb. 2nd, 2007; this property lies within flood zone "X", "Areas determined to be outside the 0.2 % annual chance floodplain."
13. DRAINAGE: A drainage report shall accompany this plat.

LEGAL DESCRIPTION

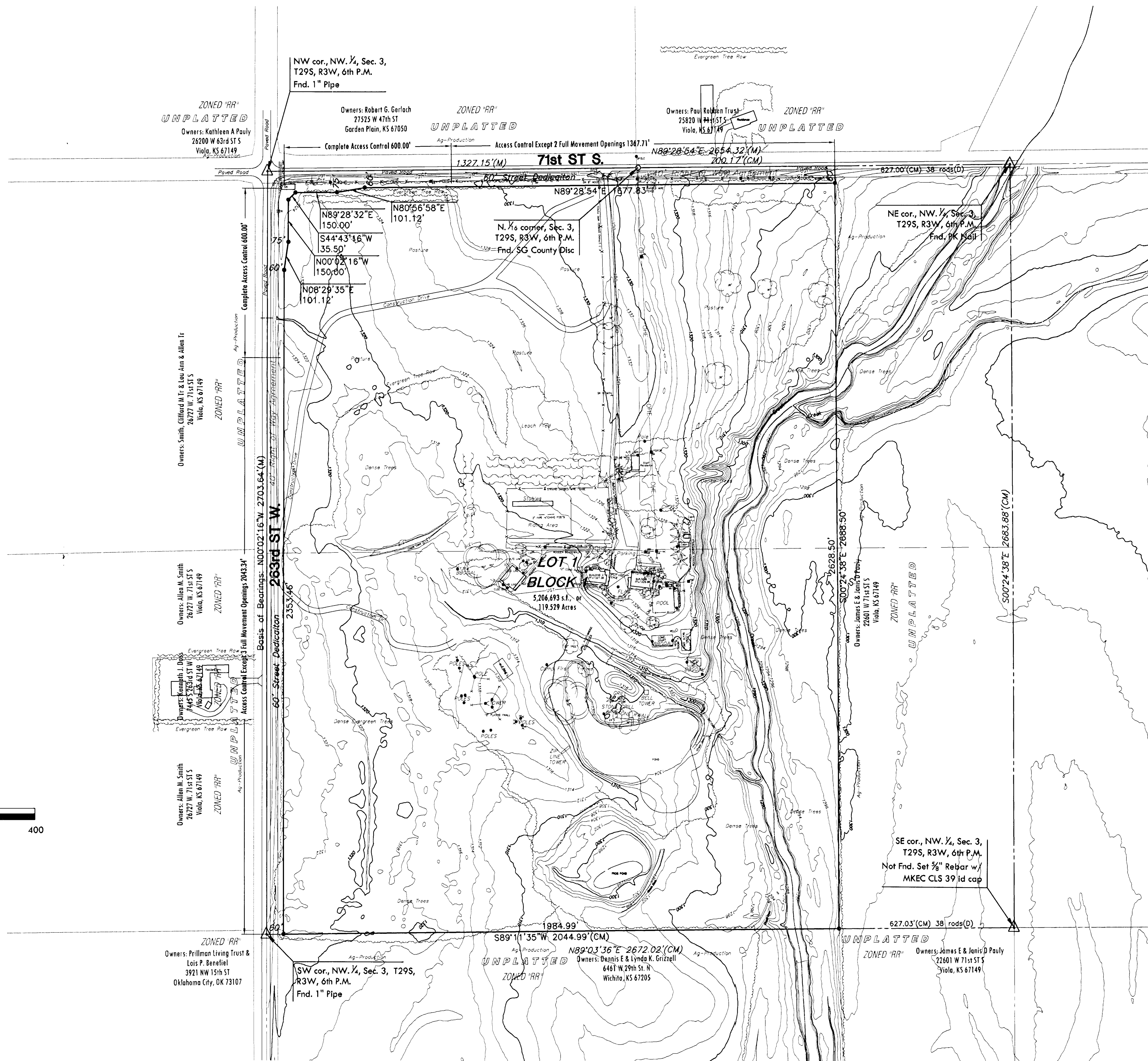
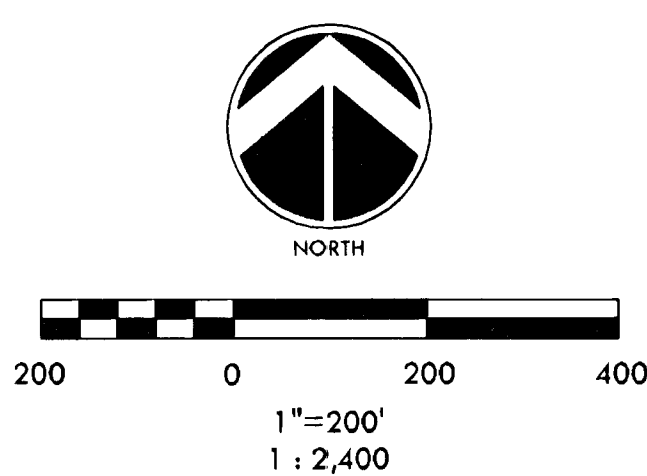
The Northwest Quarter of Section 3, Township 29 South, Range 3 West, Sedgwick County, Kansas, EXCEPT the east 38 rods thereof.
CONTAINING: 126.130 acres of land, more or less.

LEGEND

- | | |
|--|---|
| <ul style="list-style-type: none"> ☆ 6IN - CONIFEROUS TREE & DIAMETER ○ 6IN - DECIDUOUS TREE & DIAMETER SN - SIGN PK - POWER POLE AND GUY ANCHOR ELEC BOX - ELECTRIC BOX LP - LIGHT POLE FH - FIRE HYDRANT WV - WATER VALVE WM - WATER METER SC - SECTION CORNER BM - BENCHMARK ----- EASEMENT ----- BUILDING SETBACK | <ul style="list-style-type: none"> --- FENCE --- STORM SEWER PIPE --- WATER LINE --- SANITARY SEWER LINE --- GAS LINE --- GAS PIPELINE --- TELEPHONE LINE --- UNDERGROUND ELECTRIC LINE --- OVERHEAD ELECTRIC --- FIBER OPTIC CABLE |
|--|---|



VICINITY MAP



PRELIMINARY PLAT

A portion of the NW. 1/4, Sec. 3, T29S, R3W, 6th P.M.

CAMP HYDE ADDITION

OWNER / DEVELOPER: Camp Hyde, Inc., Attn: Dennis Schoenebeck 340 S. Broadway Wichita, KS 67202 316.219-9622

MKEC
ENGINEERING
CONSULTANTS, INC.

Date submitted: Nov. 28th, 2011
Subdivision Hearing: Dec. 15th, 2011

411 N. WEBB ROAD
WICHITA, KS. 67206
316-684-9600

J:\Civil\10466 - YHCA Camp Hyde.dwg Prop: 1/22/2011 6:18:01 PM CT

CERTIFICATE OF SURVEY

I, Gregory J. Allison, a registered land surveyor in Kansas, do hereby certify that I have been in responsible charge of surveying and platting of "CAMP HYDE ADDITION", an addition to Sedgwick County, Kansas, into a Lot, a Block, and Streets, the same being accurately set forth in the accompanying plat and described herein:

The Northwest Quarter of Section 3, Township 29 South, Range 3 West, Sedgwick County, Kansas, EXCEPT the east 38 rods thereof.

CONTAINING: 5,206,693 square feet or 119.529 acres of land, more or less.

All streets, easements, rights-of-ways, building setbacks, and access controls, together with all other public dedications within the above described property, are hereby vacated and replatted by virtue of K.S.A. 12-512b.

I hereby certify that the details of this plat are correct to the best of my knowledge and belief this ____ day of _____, 2012.

Gregory J. Allison, PE, LS #1257
MKEC Engineering Consultants, Inc.
411 North Webb Road
Wichita, Kansas 67206

OWNER'S CERTIFICATE

Know all men by these presents that the undersigned property owner of the land above set forth in the Registered Land Surveyor's Certificate, has caused the same to be surveyed and platted into a Lot, a Block, and Streets the same to be known as "CAMP HYDE ADDITION," an addition to Sedgwick County, Kansas.

The streets are hereby dedicated to and for the use of the public.

All abutters rights of access to or from 263rd Street West over and across the west line and 71st Street South over and across the north line of "CAMP HYDE ADDITION," are hereby granted to the appropriate governing body, as indicated hereon.

A drainage plan has been developed for this plat. All drainage easements, right-of-way, or reserves shall remain at established grades or as modified with the approval of the County Engineer, and unobstructed to allow for the conveyance of storm water.

CAMP HYDE, Inc., a Kansas not for profit corporation

_____, President
Dennis Schoenbeck, President

STATE OF KANSAS, SEDGWICK COUNTY) ss:

This instrument was acknowledged before me on ____ day of _____, 2012, by Dennis Schoenbeck, President, Camp Hyde, Inc., a Kansas not for profit corporation.

IN WITNESS WHEREOF, I have hereunto set my hand and affixed my official seal, the day and year last above written.

_____, Notary Public
Notary Public
My Term Expires: _____

PLANNING COMMISSION CERTIFICATE

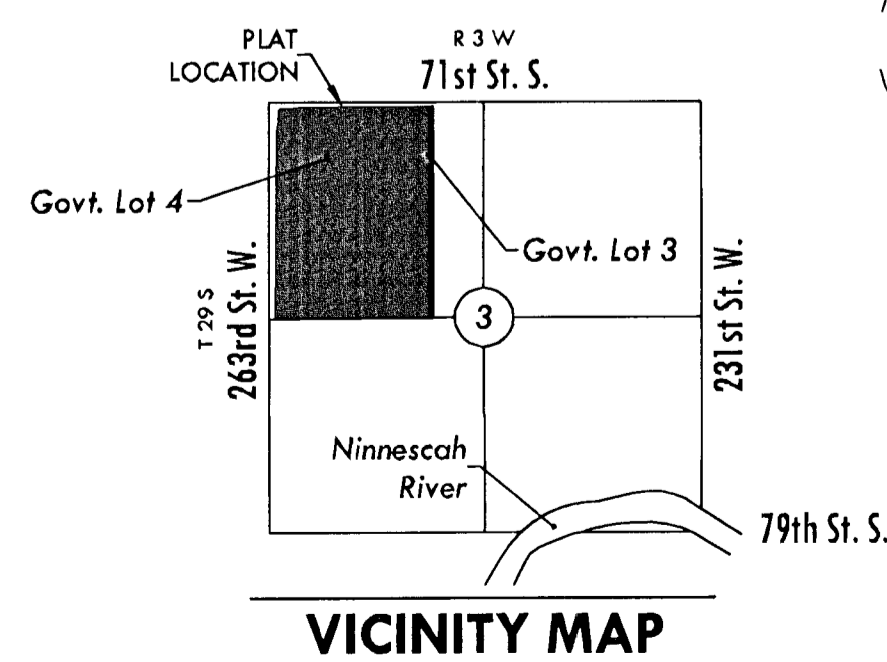
This plat of "BERKELEY SQUARE FIRST ADDITION" has been submitted to and approved by the Wichita-Sedgwick County Metropolitan Area Planning Commission, Wichita, Kansas.

Dated this ____ day of _____, 2012

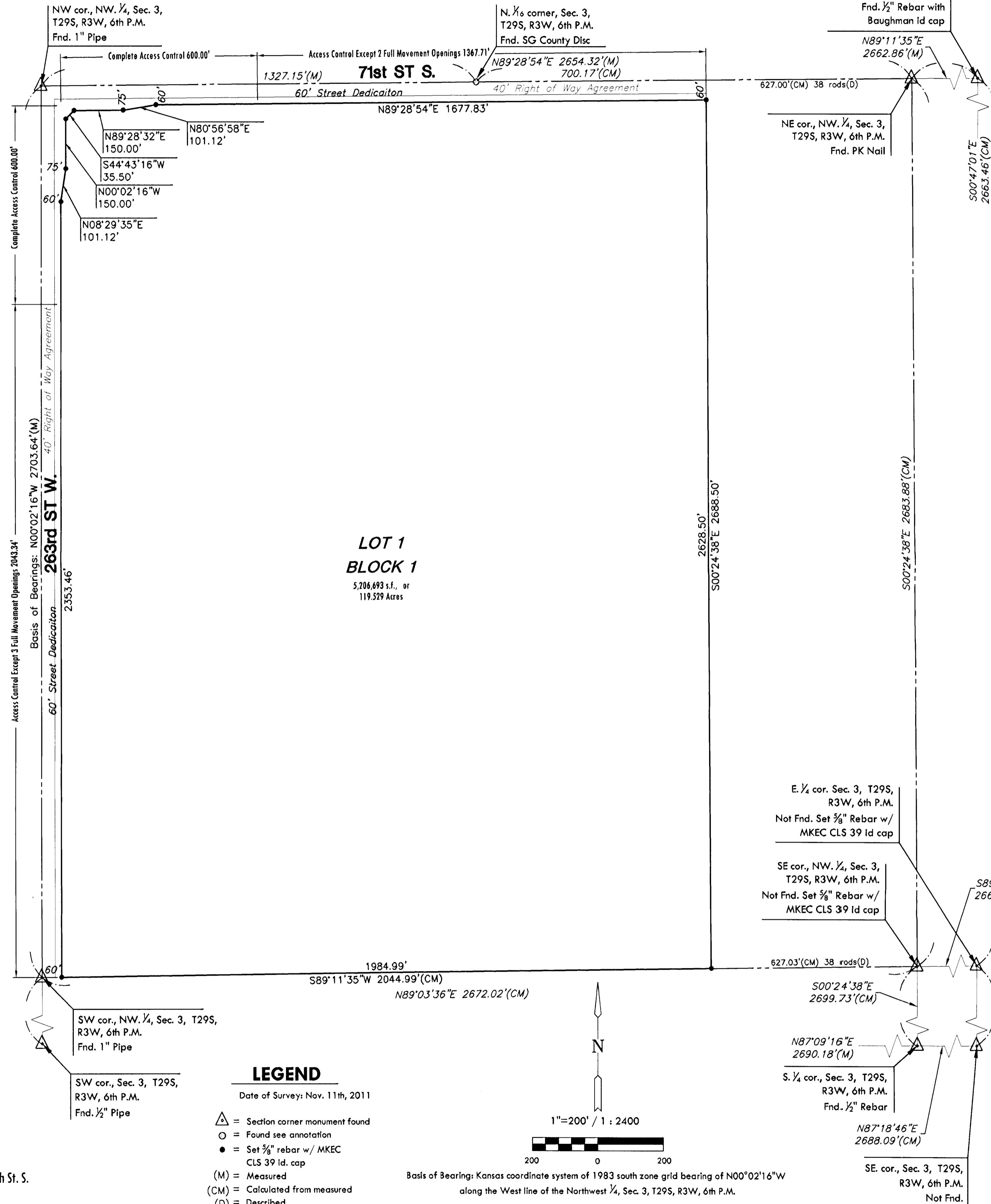
WICHITA-SEDGWICK COUNTY METROPOLITAN AREA PLANNING COMMISSION

_____, Chair
Shawn Farney, Chair

Attest:
_____, Secretary
John L. Schlegel, Secretary



FINAL PLAT
CAMP HYDE ADDITION
AN ADDITION TO SEDGWICK COUNTY, KANSAS



LEGEND
Date of Survey: Nov. 11th, 2011

- △ = Section corner monument found
- = Found see annotation
- = Set 3/8" rebar w/ MKEC CLS 39 id. cap
- (M) = Measured
- (CM) = Calculated from measured
- (D) = Described



Basis of Bearings: Kansas coordinate system of 1983 south zone grid bearing of N00°02'16"W along the West line of the Northwest 1/4, Sec. 3, T29S, R3W, 6th P.M.
This plat is surveyed and platted on NAD88 using Kansas state plane south zone coordinates, modified to the surface, having a combined adjustment scale factor of 1.000103207

GOVERNING BODY CERTIFICATE

STATE OF KANSAS, SEDGWICK COUNTY) ss:

This plat of "CAMP HYDE ADDITION" has been submitted to and approved by the Board of Sedgwick County Commissioners, Sedgwick County, Kansas.

Dated this ____ day of _____, 2012

SEDGWICK COUNTY BOARD OF COUNTY COMMISSION

At the direction of the Board of Commissioners

_____, Chairman
Dave Uhrh, Chairman

Attest:
_____, County Clerk
Kelly Arnold, County Clerk

TRANSFER RECORD

STATE OF KANSAS, SEDGWICK COUNTY) ss:

Entered on transfer record this ____ day of _____, 2012

_____, County Clerk
Kelly B. Arnold, County Clerk

REGISTER OF DEEDS CERTIFICATE

STATE OF KANSAS, SEDGWICK COUNTY) ss:

This is to certify that this instrument was filed for record in the Register of Deeds office this ____ day of _____, 2012, at ____ o'clock ____ M., and is duly recorded.

_____, Register of Deeds
Bill Meek, Register of Deeds

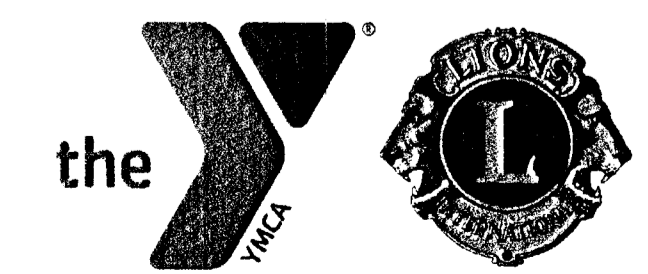
Attest:
_____, Deputy
Tonya E. Buckingham, Deputy

COUNTY SURVEYOR

STATE OF KANSAS, SEDGWICK COUNTY) ss:

Reviewed in accordance with K.S.A. 58-2005 on this ____ day of _____, 2012.

_____, Deputy County Surveyor
Tricia L. Robello, LS #1246
Deputy County Surveyor
Sedgwick County, Kansas



MKEC
ENGINEERING
CONSULTANTS, INC.
411 N. WEBB ROAD
WICHITA, KS. 67206
316-684-9600

J:\Cadd\Gadd - MCA Camp Hyde\Prop\Drawings\11/27/2011 4:16:47 PM.GST