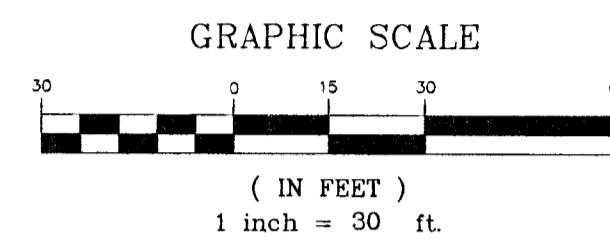
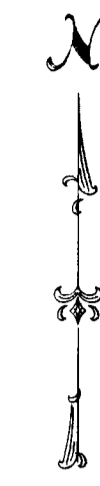
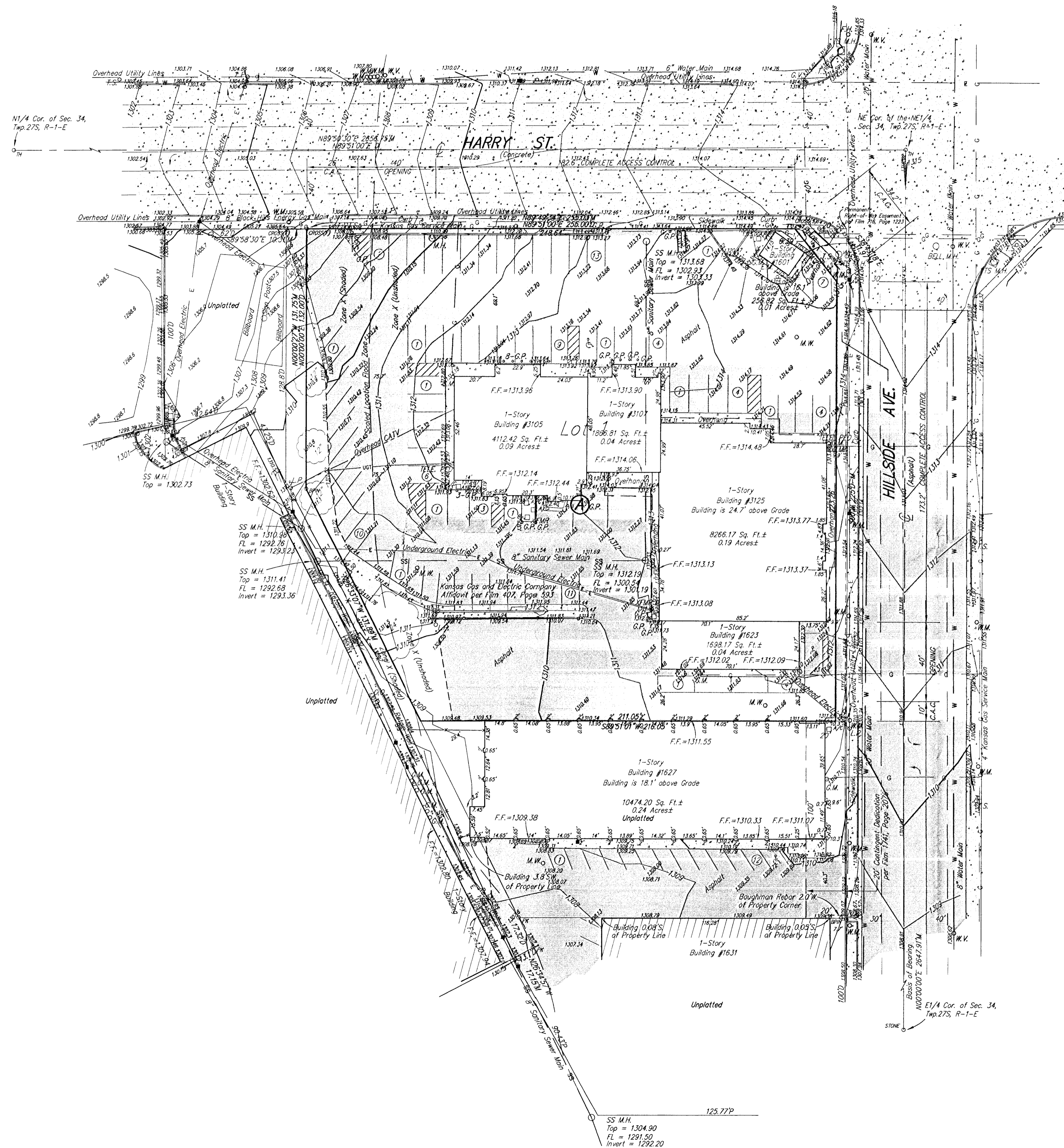


# PRELIMINARY PLAT CVS HARRY & HILLSIDE ADDITION

WICHITA, SEDGWICK COUNTY, KANSAS



C.A.C. = COMPLETE ACCESS CONTROL  
ELEVATIONS = NAVD88

**SITE BENCH MARKS:**

- Benchmark #1  
City of Wichita Brass Disc on Traffic Signal Base 32.8' West of the Centerline of Hillside Ave. and 57.3' South of the Centerline of Harry St.  
Elevation = 1315.19 NAVD88
- Benchmark #2  
Square Cut top of Curb 6.0' East of the Southeast Corner of Property.  
(N. Side Flume)  
Elevation = 1308.25 NAVD88
- Benchmark #3  
Square Cut top of Retain Wall 72.5' West of the Northwest Corner of Property.  
Elevation = 1304.77 NAVD88

- B.M. 1/2" REBAR W/ BAUSHMAN CAP (FOUND)
- P.M. CITY OF WICHITA CONCRETE MONUMENT (FOUND)
- P.K. PK NAIL (FOUND)
- W.M. CHISELED V-NOTCH (FOUND)
- C.D. CHISELED CROSS (FOUND)
- C.D. CHISELED CROSS (SET)
- S.T. CHISELED CROSS ON STONE (FOUND)
- S.V. 1/2" REBAR W/ SVAWY CAP (SET)

**LEGEND**

- G = GAS MAIN
- W = WATER MAIN
- SS = SANITARY SEWER
- SWS = STORM WATER SEWER
- UGE = UNDER GROUND ELECTRIC
- UGT = UNDER GROUND TELEPHONE
- B.M. BENCH MARK
- TELE. PED. TELEPHONE PEDESTAL
- C.O. CLEAN OUT
- E.M. ELECTRIC METER
- F.H. FIRE HYDRANT
- GUY ANCHOR
- G.M. GAS METER
- G.P. GUARD POST
- G.V. GAS VALVE
- H.L.P. HIGH LINE POLE
- L.P. LIGHT POLE
- M.W. MONITOR WELL
- O.H. OBSERVATION HOLE
- P. POST
- P.P. POWER POLE
- R.D. ROOF DRAIN
- S. SIGN
- T.S. TRAFFIC SIGNAL
- W.M. WATER METER
- W.V. WATER VALVE
- W.T. ELECTRIC TRANSFORMER

**Legal Description:**

Beginning at the Northeast corner of the Northeast Quarter of Section 34, Township 27 South, Range 1 East of the 6th P.M., Sedgwick County, Kansas; thence West 305 feet; thence South 190 feet; thence Southeast to a point 290 feet South and 247.27 feet West of the Northeast corner of said Northeast Quarter; thence East 247.27 feet to the East line of said Northeast Quarter; thence North 290 feet to the point of beginning, except streets.

**OWNER:**  
Revocable Trust for Roland A. King  
Premier Civil Engineering  
308 TCW Court  
Lake St. Louis, MO. 63367  
Ph 314-925-7452

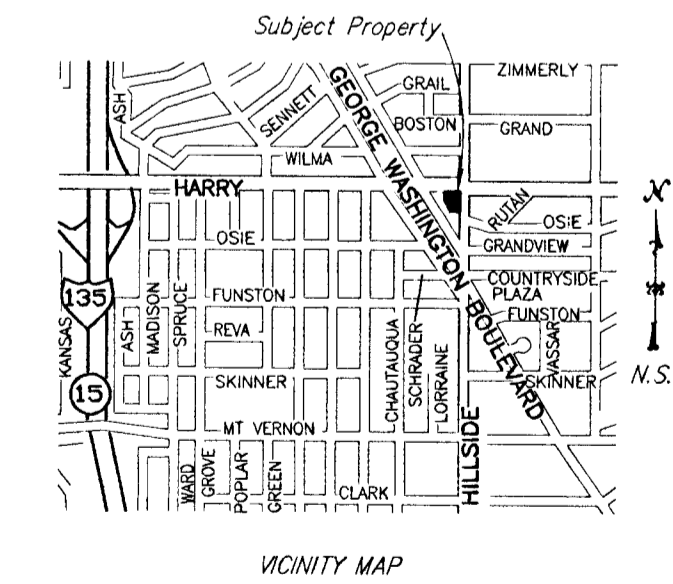
**GROSS SIZE**  
65007.02 Sq. Ft.  
1.49 Acres±

**NET SIZE**  
63720.95 Sq. Ft.  
1.46 Acres±

**MINIMUM LOT SIZE**  
63720.95 Sq. Ft.  
1.46 Acres±

**ZONING**  
LC - Limited Commercial

**CONTROL NUMBER**  
156459



PROJECT NO. 120012850 P

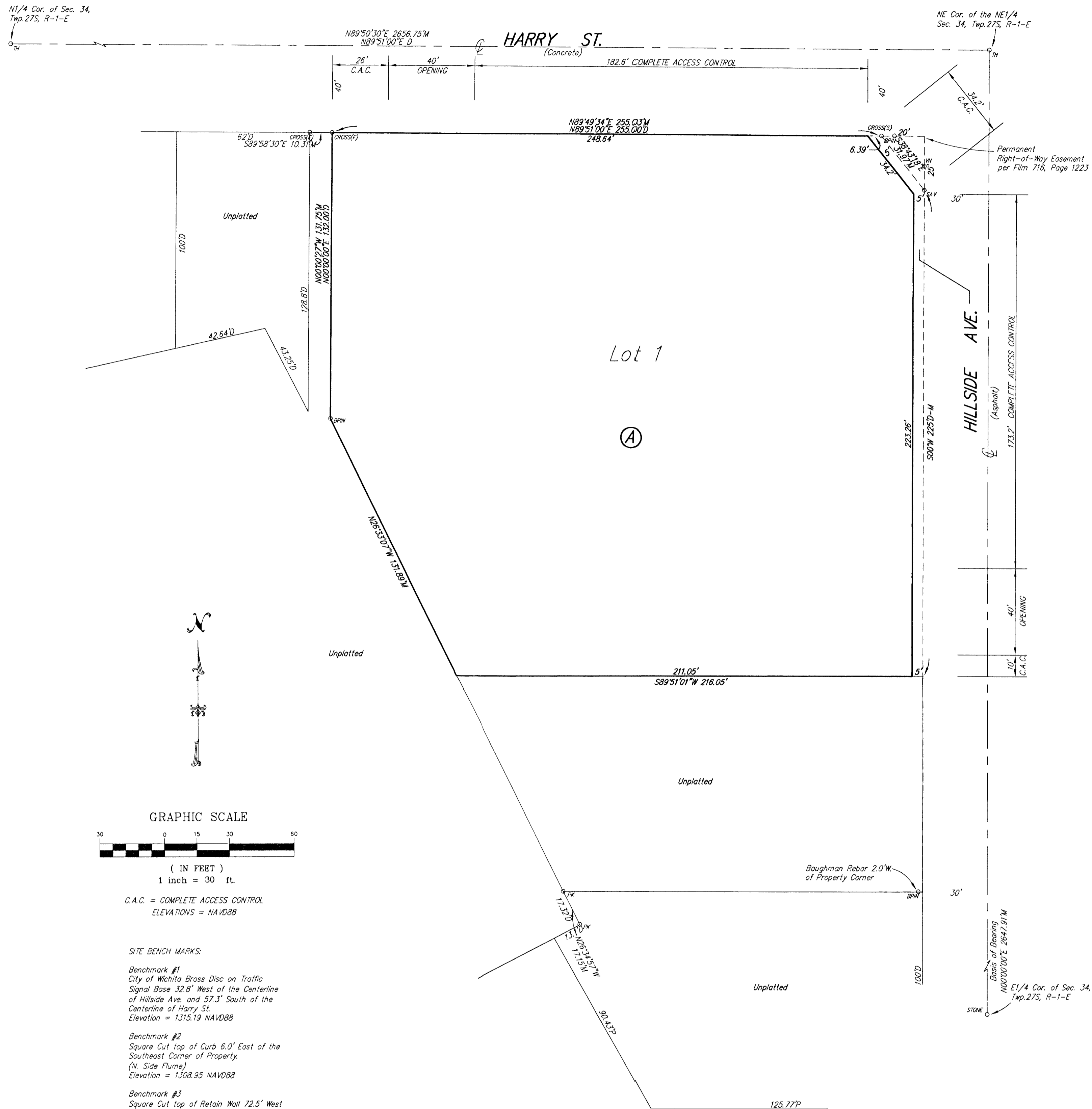


**Savoy Company, P.A.**  
Land Surveyors

433 S. Hydraulic, Wichita, KS 67211-1911  
www.savoyco.com

PH (316) 265-0005  
FAX (316) 265-0275

29 MAY 2012



# CVS HARRY & HILLSIDE ADDITION

## WICHITA, SEDGWICK COUNTY, KANSAS

This plat of "CVS HARRY & HILLSIDE ADDITION", Wichita, Sedgwick County, Kansas, has been submitted to and approved by the Wichita-Sedgwick County Metropolitan Area Planning Commission, Wichita, Kansas.

Dated this \_\_\_\_\_ day of \_\_\_\_\_, 2012.

Wichita-Sedgwick County Metropolitan Area Planning Commission

State of Kansas) SS  
Sedgwick County)

We, Savoy Company, P.A., Surveyors in aforesaid county and state do hereby certify that, under the supervision of the undersigned, we have surveyed and platted "CVS HARRY & HILLSIDE ADDITION" Wichita, Sedgwick County, Kansas and that the accompanying plat is a true and correct exhibit of the property surveyed, described as:

Beginning at the Northeast corner of the Northeast Quarter of Section 34, Township 27 South, Range 1 East of the 6th P.M., Sedgwick County, Kansas; thence West 305 feet; thence South 190 feet; thence Southeast to a point 290 feet South and 247.27 feet West of the Northeast corner of said Northeast Quarter; thence East 247.27 feet to the East line of said Northeast Quarter; thence North 290 feet to the point of beginning, except streets.

All Public easements and dedications being vacated by virtue of K.S.A. 12-512b.

Savoy Company, P.A.

Date \_\_\_\_\_ Surveyor  
Mark A. Savoy RLS #788

Know all men by these presents that We, the undersigned, have caused the land described in the surveyors certificate to be platted into a Lot, Block and Street to be known as "CVS HARRY & HILLSIDE ADDITION" Wichita, Sedgwick County, Kansas. The street is hereby dedicated to and for the use of the public. A drainage plan has been developed for this plat and all drainage easements, rights-of-way, or reserves shall remain at established grades, or as modified with the approval of the City Engineer, and unobstructed to allow for the conveyance of stormwater. Access Control is hereby granted as shown on face of the Plat.

Revocable Trust for Roland A. King  
Roland A. King Trustee

State of Kansas) SS  
Sedgwick County)

The foregoing instrument acknowledged before me, this \_\_\_\_\_ day of \_\_\_\_\_, 2012, by Roland A. King, Trustee of the Revocable Trust for Roland A. King, Roland A. King, Trustee u/d/t October 28, 2003.

\_\_\_\_\_, Notary Public

My App't. Exp. \_\_\_\_\_

\_\_\_\_\_  
Shawn Farney Chair

\_\_\_\_\_  
John L. Schlegel Secretary

This plat approved and all dedications shown hereon, accepted by the City Council of the City of Wichita, Kansas, this \_\_\_\_\_ day of \_\_\_\_\_, 2012.

\_\_\_\_\_  
Carl Brewer Mayor

\_\_\_\_\_  
Karen Sublett City Clerk

Reviewed in accordance with K.S.A. 58-2005 on this \_\_\_\_\_ day of \_\_\_\_\_, 2012.

\_\_\_\_\_  
Tricia L. Robello, LS #1246 Deputy County Surveyor Sedgwick County Kansas

Entered on transfer record this \_\_\_\_\_ day of \_\_\_\_\_, 2012.

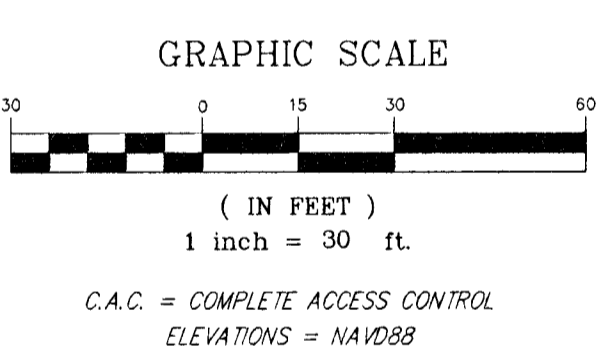
\_\_\_\_\_  
Kelly B. Arnold County Clerk

State of Kansas) SS  
Sedgwick County)

This is to certify that this plat has been filed for record in the office of the Register of Deeds, this \_\_\_\_\_ day of \_\_\_\_\_, 2012, at o'clock \_\_\_\_M. and is duly recorded.

\_\_\_\_\_  
Bill Meek Register of Deeds

\_\_\_\_\_  
Tonya Buckingham Deputy



SITE BENCH MARKS:

Benchmark #1  
City of Wichita Brass Disc on Traffic Signal Base, 12.8' West of the Centerline of Hillside Ave. and 57.3' South of the Centerline of Harry St.  
Elevation = 1315.19 NAVD88

Benchmark #2  
Square Cut Top of Curb 6.0' East of the Southeast Corner of Property.  
(N. Side Flume)  
Elevation = 1308.95 NAVD88

Benchmark #3  
Square Cut Top of Retain Wall 72.5' West of the Northwest Corner of Property.  
Elevation = 1304.77 NAVD88

- \* B.M. 1/2" REBAR W/BAUGHMAN CAP (FOUND)
- \* T.M. CITY OF WICHITA CONTROL MONUMENT (FOUND)
- \* P.K. P.K. NAIL (FOUND)
- \* I.W. CHISELED W-NOTCH (FOUND)
- \* C.CROSS(S) CHISELED CROSS (FOUND)
- \* C.CROSS(S) CHISELED CROSS (SET)
- \* S.TONE CHISELED CROSS ON STONE (FOUND)
- \* S.V. 1/2" REBAR W/SAVOY CAP (SET)

