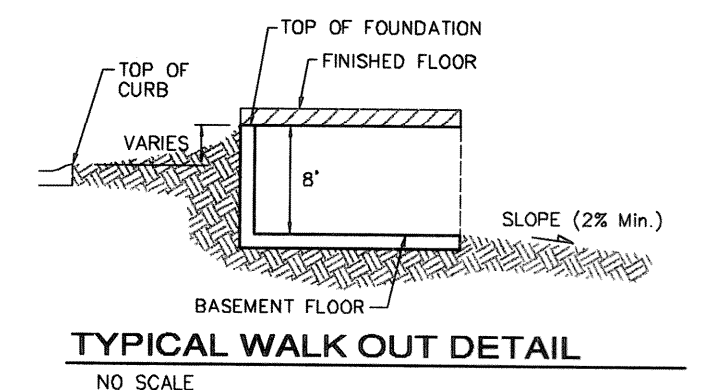
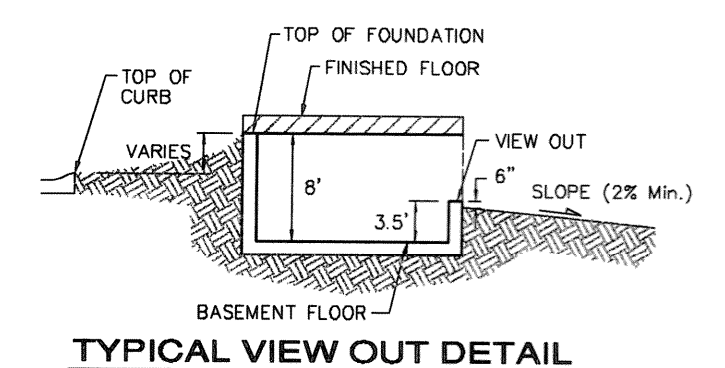
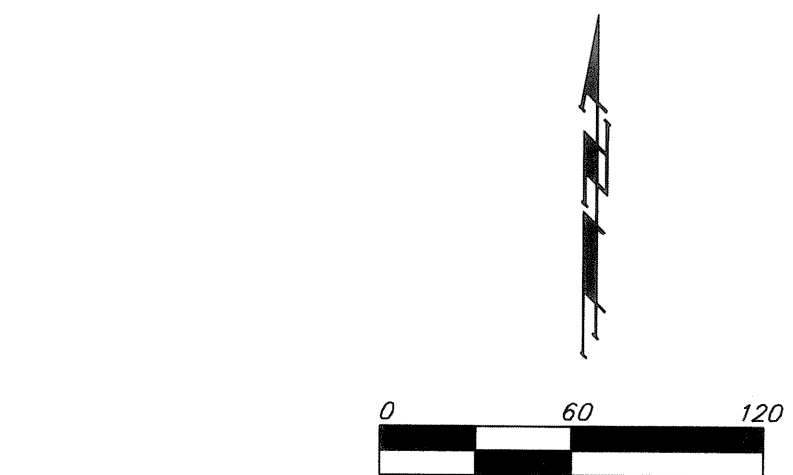
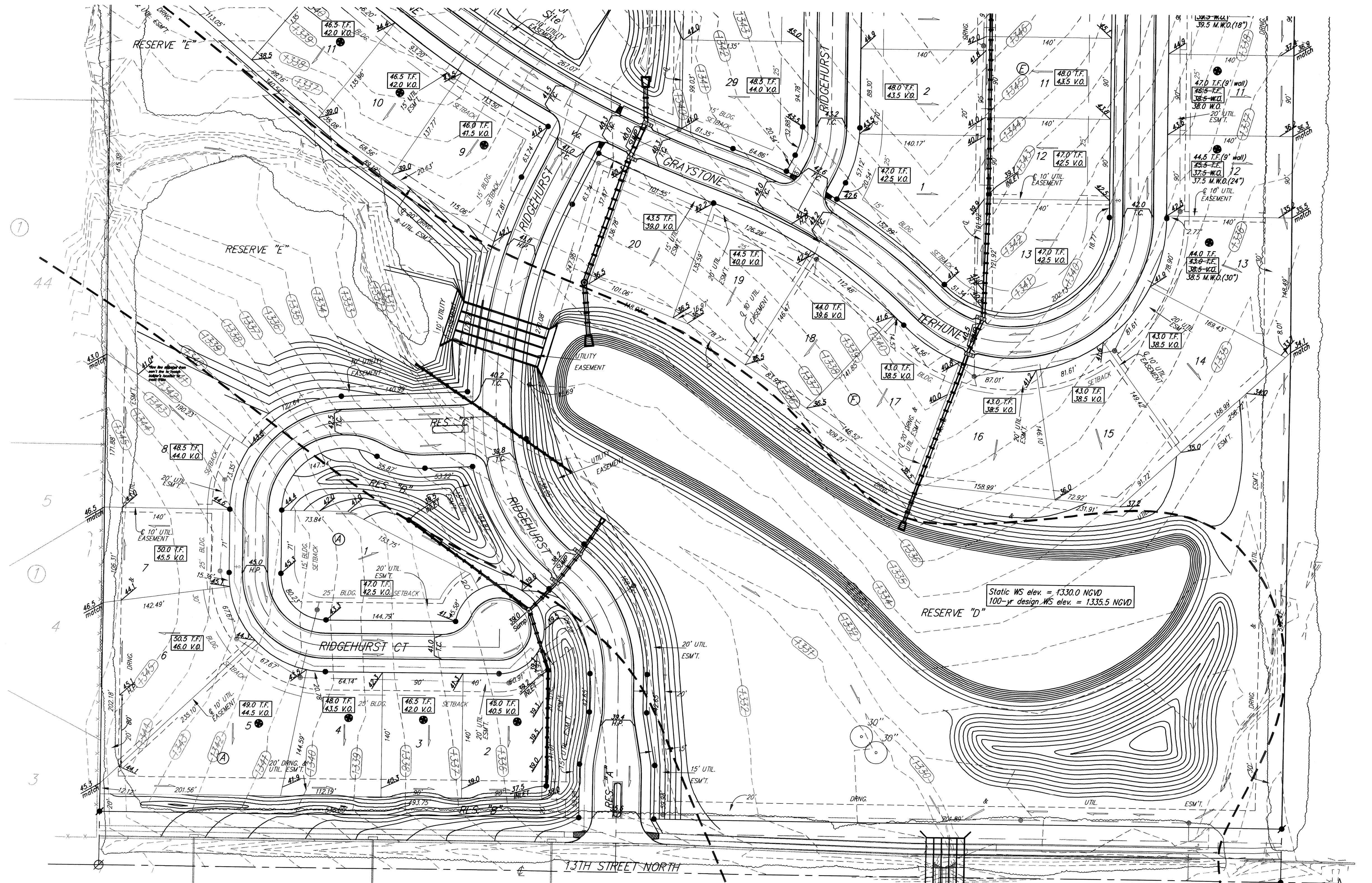


**BENCHMARK:**  
 BM #1: CUT, TOP OF CURB, S. SIDE OF SUNDANCE AS DEDICATED IN SAVANNA AT CASTLE ROCK RANCH 7TH ADDITION, 25± W. OF THE WEST LINE OF THE SE1/4 OF SEC. 12, TWP. 27-S, R-2-E.  
 ELEV. = 1347.33 NGVD29

BM #2: 604 NAIL IN HIGH LINE POLE, 30' SOUTH OF S1/4 COR., SEC. 12, TWP. 27-S, R-2-E.  
 ELEV. = 1348.58 NGVD29 (PER COUNTY RECORD)



- NOTES:**
- PROPOSED TOP OF FOUNDATION ELEVATIONS ARE SHOWN ON PLANS. CONTRACTOR TO SET FINISHED FLOOR AND GARAGE FLOOR ELEVATIONS. ALL STREET ELEVATIONS SHOWN ON PLANS ARE FOR TOP OF CURB (FULL-HEIGHT).
  - THIS GRADING PLAN IS DESIGNED WITH VIEW-OUTS AND WALK-OUTS. ELEVATIONS SHOWN AS XX.X V.O. DEPICT VIEW-OUT STRUCTURES. ELEVATIONS SHOWN AS XX.X W.O. DEPICT WALK-OUT STRUCTURES.
  - ALL LOTS SHALL MEET MINIMUM PAD REQUIREMENT AS SHOWN ON THE RECORDED PLAT.

MINIMUM BUILDING PAD ELEVATIONS FOR LOWEST OPENING TO THE STRUCTURES		
LOT	BLOCK	ELEVATION NGVD29
STONEBRIDGE 2ND ADDITION		
1	A	1,342.5
8	A	1,344.0
9-13	A	1,341.0
1-8	D	1,344.5
14-18	D	1,348.5
23-29	D	1,344.0
13-20	F	1,338.5
STONEBRIDGE 3RD ADDITION		
2-10	A	1,352.0
15-21	A	1,352.0
23-26	A	1,352.0

- LOT DIMENSIONS HAVE BEEN OMITTED ON THIS PLAN. REFER TO THE RECORDED PLAT FOR FINAL DIMENSION, EASEMENT, & BUILDING SETBACK INFORMATION.
- HOUSE PAD ELEVATIONS DEPICTED WITH BOLD OUTLINES AND NOTED WITH THIS SYMBOL INDICATE THAT DEEP FOOTINGS OR DEEP FOUNDATIONS MAY BE REQUIRED.
- A DRAINAGE PLAN HAS BEEN DEVELOPED FOR THIS SUBDIVISION AND IS ON FILE WITH SEDGWICK COUNTY, KANSAS. DRAINAGE INTENT SHALL REMAIN AS DEPICTED OR AS MODIFIED WITH THE APPROVAL OF THE COUNTY ENGINEER OF SEDGWICK COUNTY, KANSAS. NO OBSTRUCTIONS WHICH IMPEDE THE FLOW OF THIS DRAINAGE PLAN SHALL BE ALLOWED.
- ALL ELEVATIONS SHOWN ARE NGVD29 DATUM.

--- 1340 --- Existing Grade

**Baughman** ENGINEERING | SURVEYING | PLANNING | LANDSCAPE ARCHITECTURE

STONEBRIDGE 2ND/3RD ADDITION  
**SUBDIVISION GRADING PLAN**  
 SEDGWICK COUNTY, KANSAS

PROJECT NUMBER: 21190  
 DESIGN: ATD/TJW  
 DRAWN: TMS  
 APPROVED: DATE 10/11  
 SCALE: Noted  
 SHEET: 1 OF 3

REVISIONS:  
 1-29-09 NBW  
 8-17-09 NBW  
 3-23-10 NBW

11/8/11 Finalized Stonebridge 3rd and Stonebridge 2nd, Ph. II lots-TJW  
 9/1/10 Lots 2-8, Blk A Rev back yard grades - TJW  
 4/15/10 Lot 15 Blk F Rev rear lot mid-pt. for pool-AEG

