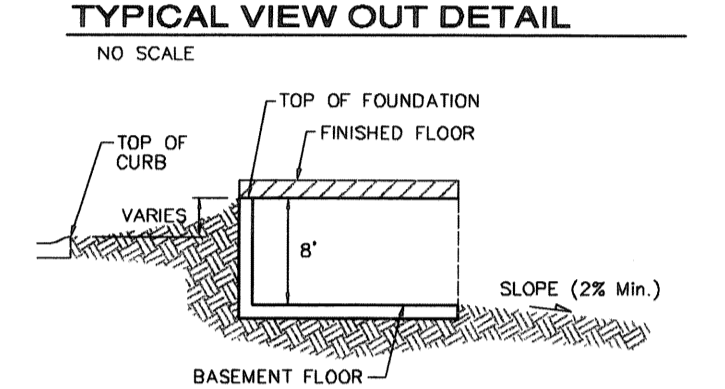
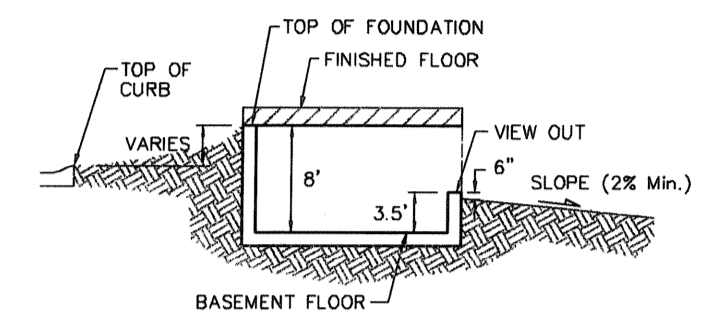
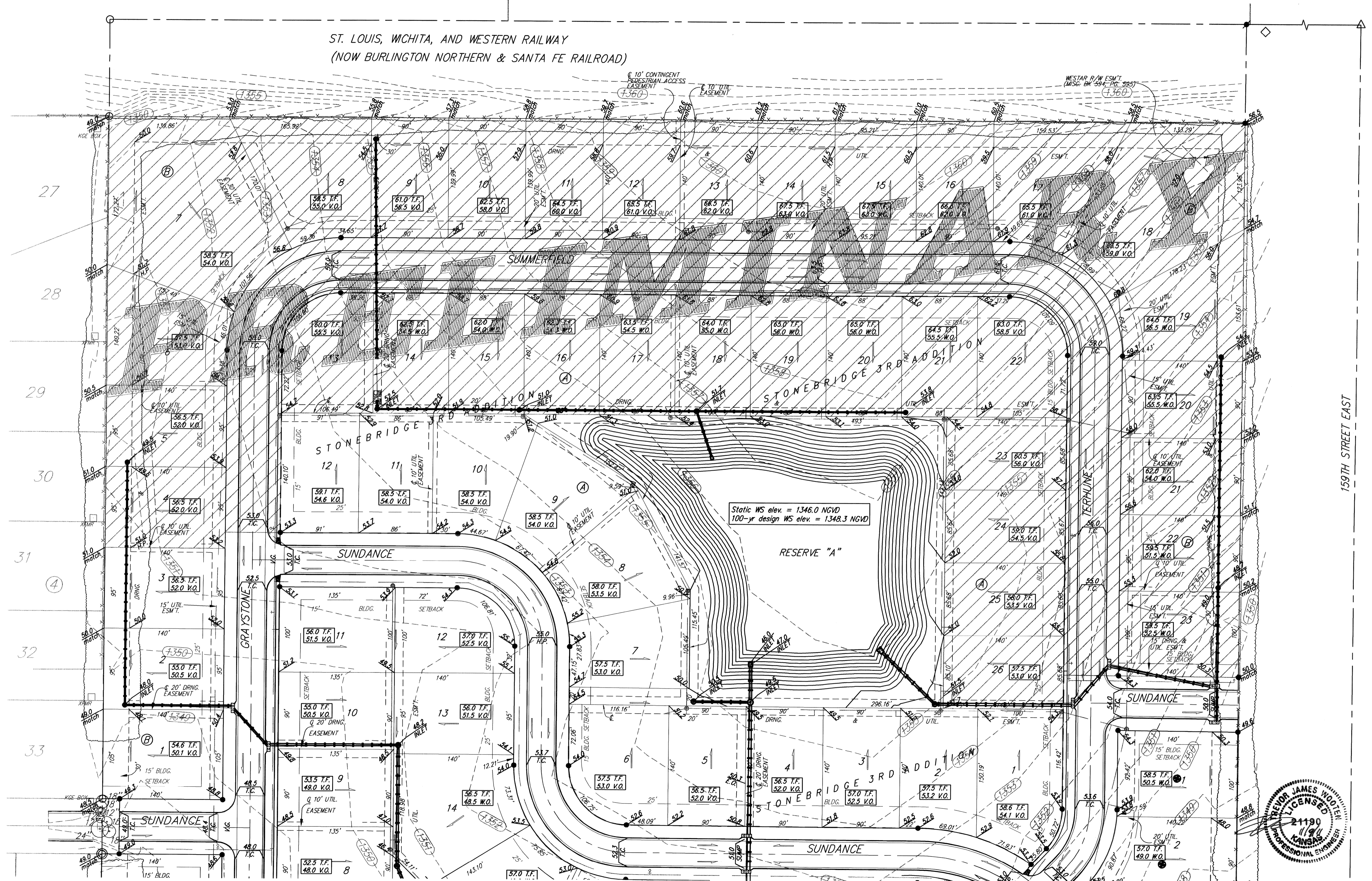
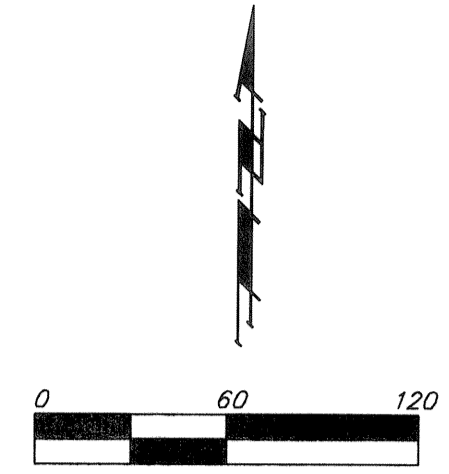


BENCHMARK:
 BM #1: "C" CUT, TOP OF CURB, S. SIDE OF SUNDANCE AS DEDICATED IN SAVANNAH AT CASTLE ROCK RANCH 7TH ADDITION, 25± W. OF THE WEST LINE OF THE SE1/4 OF SEC. 12, TWP. 27-S, R-2-E.
 ELEV. = 1347.33 NGVD29

BM #2: 60d NAIL IN HIGH LINE POLE, 30' SOUTH OF S1/4 COR., SEC. 12, TWP. 27-S, R-2-E.
 ELEV. = 1348.58 NGVD29 (PER COUNTY RECORD)

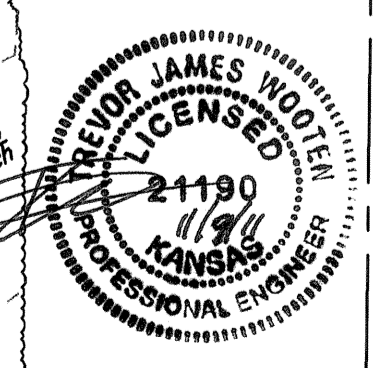


- NOTES:**
1. PROPOSED TOP OF FOUNDATION ELEVATIONS ARE SHOWN ON PLANS. CONTRACTOR TO SET FINISHED FLOOR AND GARAGE FLOOR ELEVATIONS. ALL STREET ELEVATIONS SHOWN ON PLANS ARE FOR TOP OF CURB (FULL-HEIGHT).
 2. THIS GRADING PLAN IS DESIGNED WITH WEI-O-UTS AND WALK-O-UTS. ELEVATIONS SHOWN AS XX.X V.O. DEPICT VIEW-O-UT STRUCTURES. ELEVATIONS SHOWN AS XX.X W.O. DEPICT WALK-O-UT STRUCTURES.
 3. ALL LOTS SHALL MEET MINIMUM PAD REQUIREMENT AS SHOWN ON THE RECORDED PLAT.

MINIMUM BUILDING PAD ELEVATIONS FOR LOWEST OPENING TO THE STRUCTURES		
LOT	BLOCK	ELEVATION NGVD29
STONEBRIDGE 2ND ADDITION		
1	A	1342.5
8	A	1344.0
9-13	A	1341.0
1-8	D	1344.5
14-18	D	1348.5
23-29	D	1344.0
13-20	F	1338.5
STONEBRIDGE 3RD ADDITION		
2-10	A	1352.0
15-21	A	1352.0
23-26	A	1352.0

4. LOT DIMENSIONS HAVE BEEN OMITTED ON THIS PLAN. REFER TO THE RECORDED PLAT FOR FINAL DIMENSION, EASEMENT, & BUILDING SETBACK INFORMATION.
5. HOUSE PAD ELEVATIONS DEPICTED WITH BOLD OUTLINES AND NOTED WITH THIS SYMBOL (●) INDICATE THAT DEEP FOOTINGS OR DEEP FOUNDATIONS MAY BE REQUIRED.
6. A DRAINAGE PLAN HAS BEEN DEVELOPED FOR THIS SUBDIVISION AND IS ON FILE WITH SEDGWICK COUNTY, KANSAS. DRAINAGE INTENT SHALL REMAIN AS DEPICTED OR AS MODIFIED WITH THE APPROVAL OF THE COUNTY ENGINEER OF SEDGWICK COUNTY, KANSAS. NO OBSTRUCTIONS WHICH IMPERE THE FLOW OF THIS DRAINAGE PLAN SHALL BE ALLOWED.
7. ALL ELEVATIONS SHOWN ARE NGVD29 DATUM.

— (1340) — Existing Grade



Baughman ENGINEERING | SURVEYING | PLANNING | LANDSCAPE ARCHITECTURE

STONEBRIDGE 2ND/3RD ADDITION
SUBDIVISION GRADING PLAN
 SEDGWICK COUNTY, KANSAS

115 E. 11th St., Wichita, KS 67211 | P: 316-263-2721 | F: 316-263-4149

PROJECT NUMBER	DESIGN ATD/TJW	DRAWN TMS
REVISIONS	APPROVED	DATE
10/26/11	TMS	10/11
Upland Stonebridge 3rd Addition	SCALE	Noted
	SHEET	3 OF 3

E:\GRADE\Stonebridge 2nd & 3rd Additions\Stonebridge 3rd\Grade.406-11-E017

11/8/11 Finalized Stonebridge 3rd and Stonebridge 2nd, Ph. II lots-TJW
 9/1/10 Lots 2-8, Blk A Rev back yard grades - TJW
 4/15/10 Lot 15 Blk F Rev rear lot mid-pt. for pool-AEG