

DUGAN WEST KELLOGG COMMERCIAL ADDITION

WICHITA, SEDGWICK COUNTY, KANSAS

State of Kansas) SS We, Baughman Company, P.A., Surveyors in
Sedgwick County) aforesaid county and state do hereby certify that we have surveyed and
platted "DUGAN WEST KELLOGG COMMERCIAL ADDITION", Wichita, Sedgwick
County, Kansas and that the accompanying plat is a true and correct
exhibit of the property surveyed, described as that part of the East Half
of the Northwest Quarter lying north of the railroad right-of-way in
Section 36, Township 27 South, Range 2 West of the 6th Principal
Meridian, Sedgwick County, Kansas, except the portion condemned in Case
A-38302 and except that portion deeded to the State of Kansas in Deed
Book 1419, Page 413.
Existing public easements, dedications, building setback lines,
and access openings being vacated by virtue of K.S.A. 12-512(b).
Baughman Company, P.A.

Michael G. Conroy, Surveyor
10-2011

Know all men by these presents that we,
the undersigned, have caused the land in the surveyors certificate to be
platted into Lots, a Block, a Street, and a Reserve to be known as
"DUGAN WEST KELLOGG COMMERCIAL ADDITION", Wichita, Sedgwick County,
Kansas. The utility easements are hereby granted as indicated for the
construction and maintenance of all public utilities. The drainage and
utility easements are hereby granted as indicated for drainage purposes
and for the construction and maintenance of all public utilities. The wall
easement is hereby granted as indicated for the construction and
maintenance of a private screening wall and utility main lines and service
lines shall be allowed to cross this easement. The sanitary sewer
easement is hereby granted as indicated for the construction and
maintenance of a sanitary sewer system and related appurtenances. The
street is hereby dedicated to and for the use of the public. Reserve "A"
is hereby reserved for open space, landscaping, berms, lakes, drainage
purposes, sanitary sewer systems and appurtenances as confined to
easement, and utilities as confined to easements. Reserve "A" shall be
owned and maintained by the lot owners association for the addition.
Access controls shall be as depicted on the face of the plat and are
hereby granted to the City of Wichita, Kansas. The permitted opening
locations shall be as determined by the City Engineer of the City of
Wichita, Kansas. The Minimum Building Pad Elevations for the lowest
opening to the structures shall be as indicated on the face of the plat.
FEMA floodplain and regulatory floodway boundaries are subject to periodic
change, and such change may affect the intended land use within the
subdivision.

John E. Dugan, Marilyn K. Dugan
John E. Dugan, Marilyn K. Dugan

State of Kansas) SS The foregoing instrument acknowledged before
Sedgwick County) me, this 17th day of March, 2011, by John E. Dugan and
Marilyn K. Dugan, husband and wife.

Judith M. Terhune, Notary Public
My App'l. Exp. 11-7-13

This plat of "DUGAN WEST KELLOGG
COMMERCIAL ADDITION", Wichita, Sedgwick County, Kansas has been
submitted to and approved by the Wichita-Sedgwick County Metropolitan
Area Planning Commission, Wichita, Kansas.
Dated this _____ day of _____, 2010.
Wichita-Sedgwick County Metropolitan Area Planning Commission

Debra Miller Stevens, Chair
John L. Schlegel, Secretary

This plat approved and all dedications shown
hereon accepted by the City Council of the City of Wichita, Kansas, this
day of _____, 2011.

Carl Brewer, Mayor
Karen Sublett, City Clerk

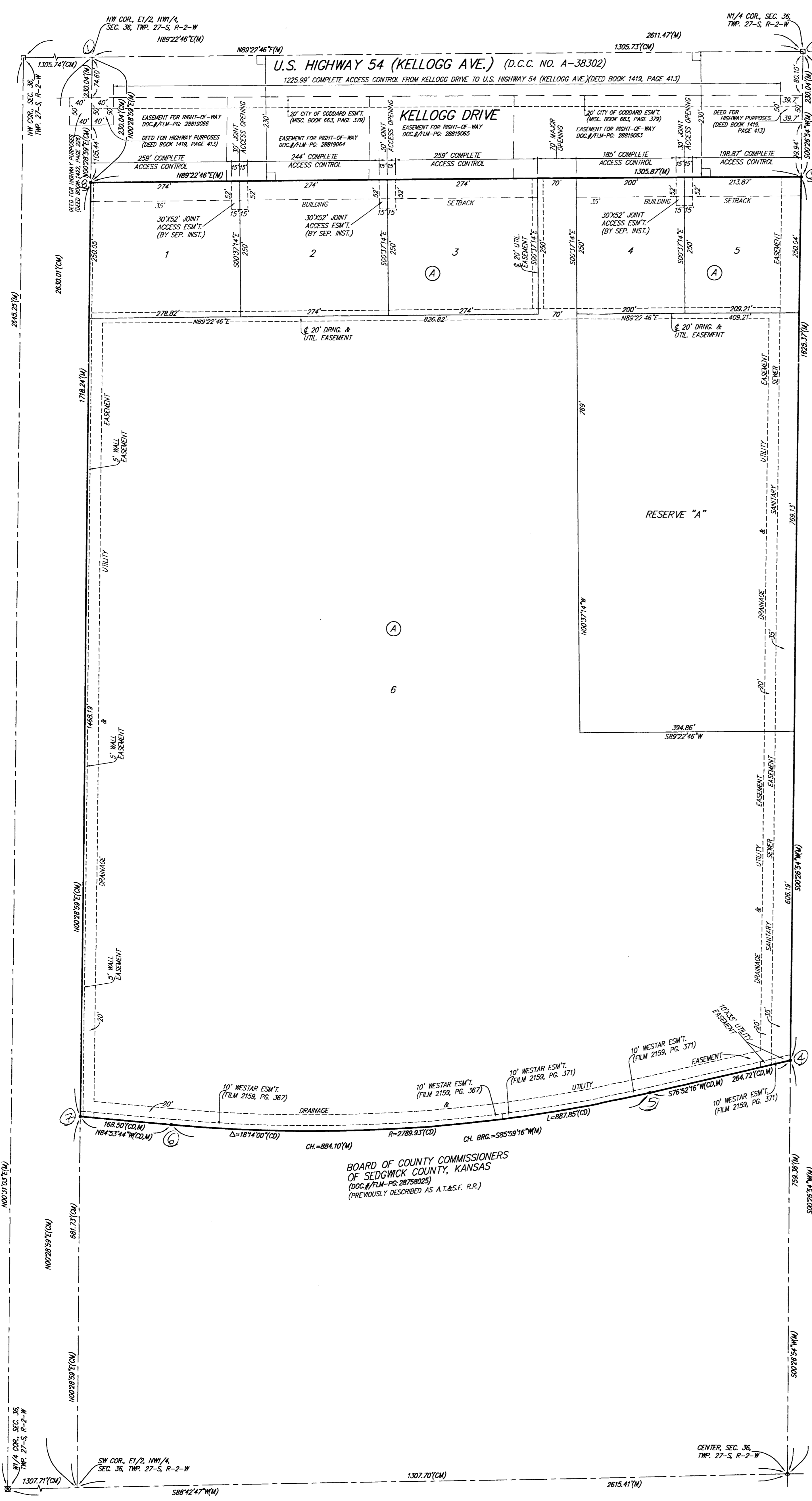
Reviewed in accordance with K.S.A. 58-2005
on this _____ day of _____, 2011.

Tricia L. Robello, L.S. #1246
Deputy County Surveyor
Sedgwick County, Kansas

Entered on transfer record this _____ day
of _____, 2011.
Kelly B. Arnold, County Clerk

State of Kansas) SS This is to certify that this plat has been
Sedgwick County) filed for record in the office of the Register of Deeds, this _____ day
of _____, 2011 at _____ o'clock _____ M.; and is duly recorded.

Bill Meek, Register of Deeds
Tonya Buckingham, Deputy



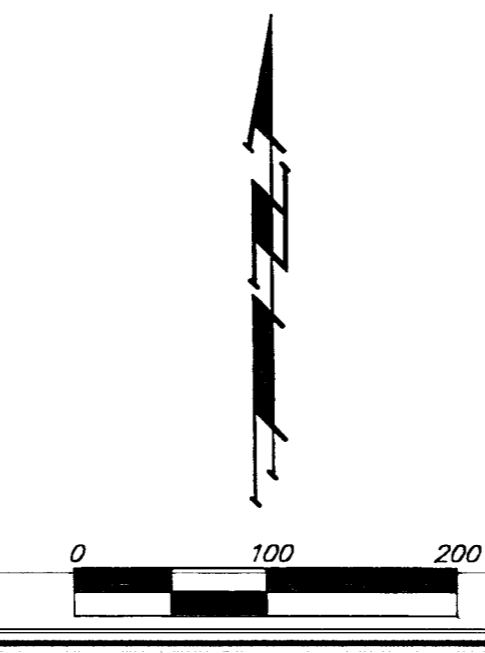
LOT	BLOCK	ELEVATION NAVD83
1-6	A	1331.0

BENCHMARK:
CHISELED CROSS ON TOP OF CATCH BASIN,
174.1' E. & 35.2' N. OF THE NW CORNER OF
LOT 1, BLOCK A, DUGAN WEST KELLOGG
COMMERCIAL ADDITION.
ELEV. = 1332.69 NAVD83

- = #4 REBAR W/ "BAUGHMAN" CAP (SET)
- △ = 1" IRON IN BROKEN STONE (FOUND)
- = #5 REBAR IN THIMBLE (FOUND)
- ⊗ = 3/4" IRON (FOUND)

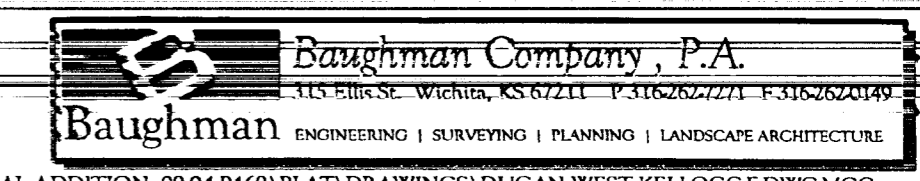
(M) = MEASURED
(CD) = CALCULATED PER DESCRIBED INFO
(CM) = CALCULATED PER MEASURED INFO

CHISELED CROSS ON TOP OF CATCH BASIN,
174.1' E. & 35.2' N. OF THE NW CORNER OF
LOT 1, BLOCK A, DUGAN WEST KELLOGG
COMMERCIAL ADDITION.
ELEV. = 1327.03 NAVD83



NOTE:
A DRAINAGE PLAN HAS BEEN DEVELOPED FOR THIS
SUBDIVISION AND IS ON FILE WITH THE CITY OF WICHITA,
KANSAS. DRAINAGE INTENT SHALL REMAIN AS DEPICTED OR AS
MODIFIED WITH THE APPROVAL OF THE CITY ENGINEER OF THE
CITY OF WICHITA, KANSAS. NO OBSTRUCTIONS WHICH IMPEDE
THE FLOW OF THIS DRAINAGE PLAN SHALL BE ALLOWED.

NOTE:
ADDITIONAL BUILDING SETBACK REQUIREMENTS
AND RESTRICTIONS FOR DUGAN WEST
KELLOGG COMMUNITY UNIT PLAN 09-04-1469



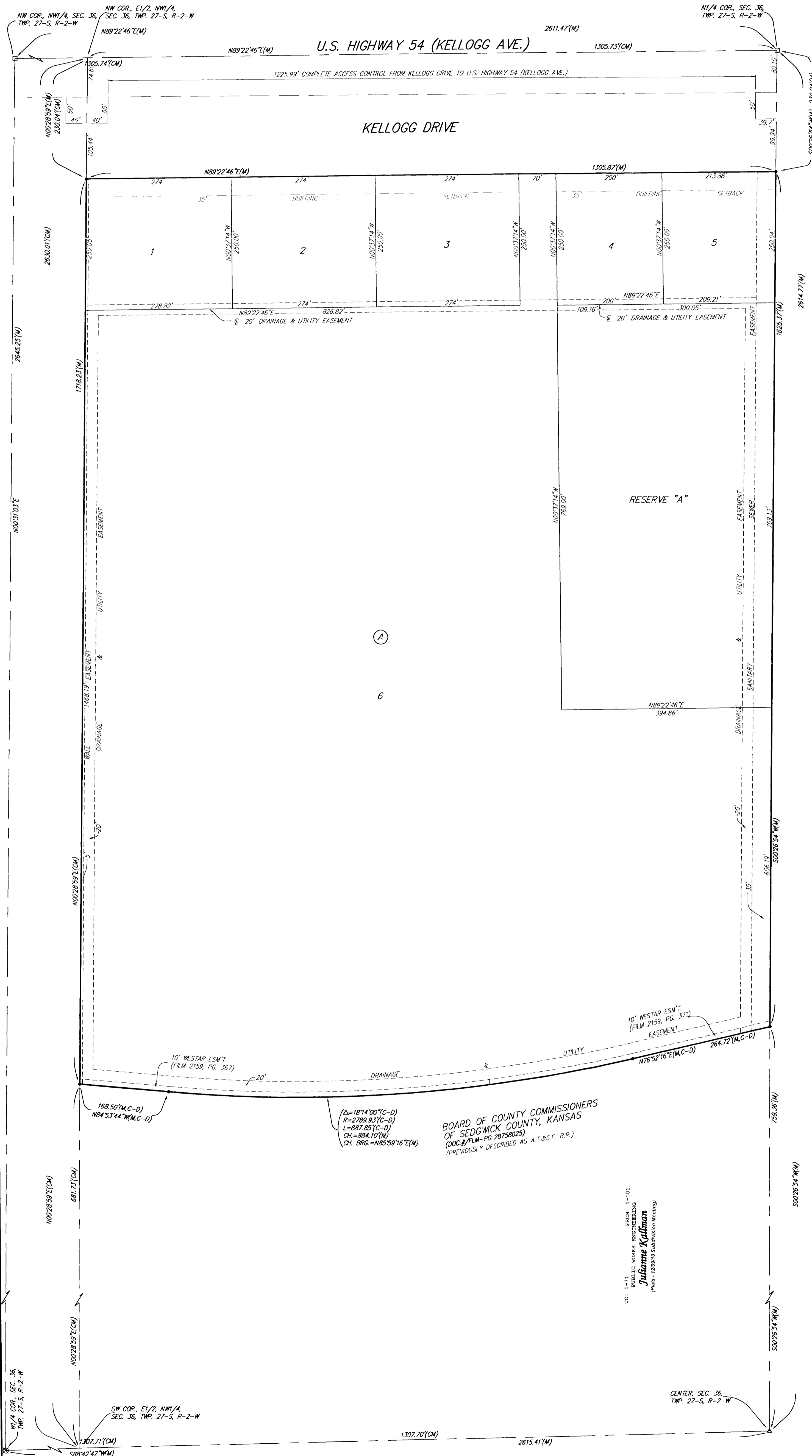
DUGAN WEST KELLOGG COMMERCIAL ADDITION

WICHITA, SEDGWICK COUNTY, KANSAS

State of Kansas) SS
 Sedgwick County) We, Baughman Company, P.A., Surveyors in
 aforesaid county and state do hereby certify that we have surveyed and
 platted "DUGAN WEST KELLOGG COMMERCIAL ADDITION", Wichita, Sedgwick
 County, Kansas and that the accompanying plat is a true and correct
 exhibit of the property surveyed, described as that part of the East Half
 of the Northwest Quarter lying north of the railroad right-of-way in
 Section 36, Township 27 South, Range 2 West of the 6th Principal
 Meridian, Sedgwick County, Kansas except the portion condemned in Case
 A-38,302 and except that portion deeded to the State of Kansas in Deed
 Book 1419, Page 413.

Existing public easements and dedications
 being vacated by virtue of K.S.A. 12-512(b).

Baughman Company, P.A.



Michael G. Conroy, Surveyor

Know all men by these presents that we, the undersigned, have caused the land in the surveyors certificate to be platted into Lots, a Block, a Street, and a Reserve to be known as "DUGAN WEST KELLOGG COMMERCIAL ADDITION", Wichita, Sedgwick County, Kansas. The drainage and utility easements are hereby granted as indicated for drainage purposes and for the construction and maintenance of all public utilities. The wall easement is hereby granted as indicated for the construction and maintenance of a private screening wall and utility main lines and service lines shall be allowed to cross this easement. The sanitary sewer easement is hereby granted as indicated for the construction and maintenance of a sanitary sewer system and related appurtenances. The street is hereby dedicated to and for the use of the public. Reserve "A" is reserved for open space, landscaping, berms, lakes, drainage purposes, sanitary sewer systems and appurtenances as confined to easement, and utilities as confined to easements. Access controls shall be as depicted on the face of the plat and are hereby granted to the City of Wichita, Kansas. The permitted opening locations shall be as determined by the City Engineer of the City of Wichita, Kansas. The Minimum Building Pad Elevations for the lowest opening to the structures shall be as indicated on the face of the plat.

John E. Dugan

Marilyn K. Dugan

State of Kansas) SS
 Sedgwick County) The foregoing instrument acknowledged before
 me, this _____ day of _____, 2010, by John E. Dugan and
 Marilyn K. Dugan, husband and wife.

_____, Notary Public

My App't. Exp. _____

This plat of "DUGAN WEST KELLOGG COMMERCIAL ADDITION", Wichita, Sedgwick County, Kansas has been submitted to and approved by the Wichita-Sedgwick County Metropolitan Area Planning Commission, Wichita, Kansas.

Dated this _____ day of _____, 2010.
 Wichita-Sedgwick County Metropolitan Area Planning Commission

Debra Miller Stevens, Chair

John L. Schlegel, Secretary

This plat approved and all dedications shown hereon accepted by the City Council of the City of Wichita, Kansas, this day of _____, 2010.

Carl Brewer, Mayor

Karen Sublett, City Clerk

Reviewed in accordance with K.S.A. 58-2005 on this _____ day of _____, 2010.

Tricia L. Robello, L.S. #1246
 Deputy County Surveyor
 Sedgwick County, Kansas

Entered on transfer record this _____ day of _____, 2010.

Kelly B. Arnold, County Clerk

State of Kansas) SS
 Sedgwick County) This is to certify that this plat has been filed
 for record in the office of the Register of Deeds, this _____ day
 of _____, 2010 at _____ o'clock _____ M.; and is duly recorded.

Bill Meek, Register of Deeds

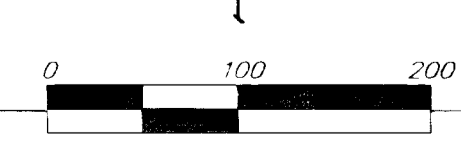
Tonya Buckingham, Deputy

- = #4 REBAR W/ "BAUGHMAN" CAP (SET)
- ▲ = 1" IRON IN BROKEN STONE (FOUND)
- = #5 REBAR IN THIMBLE (FOUND)
- ⊗ = 3/4" IRON (FOUND)

(M) = MEASURED
 (D) = DESCRIBED
 (C) = CALCULATED
 (C-D) = CALCULATED PER DESCRIBED INFO.
 (C-M) = CALCULATED PER PLATTED INFO.

MINIMUM BUILDING PAD ELEVATIONS FOR LOWEST OPENING TO THE STRUCTURES		
LOT	BLOCK	ELEVATION
1-6	A	1331.0

BENCHMARK:
 1" IRON IN BROKEN STONE
 CITY OF WICHITA BENCHMARK DISC ON SW CORNER
 OF CONCRETE BASE OF HIGH LINE POLE
 CUVV = 1360.12 NAVD88



DUGAN WEST KELLOGG COMMERCIAL ADDITION

Baughman Company, P.A.
 315 Erie St., Wichita, KS 67211 F 316-262-0149
 Baughman ENGINEERING SURVEYING PLANNING LANDSCAPE ARCHITECTURE