

NW Cor. SW 1/4
Sec. 8-T28S-R1W
Fd. 1/2" Rebar

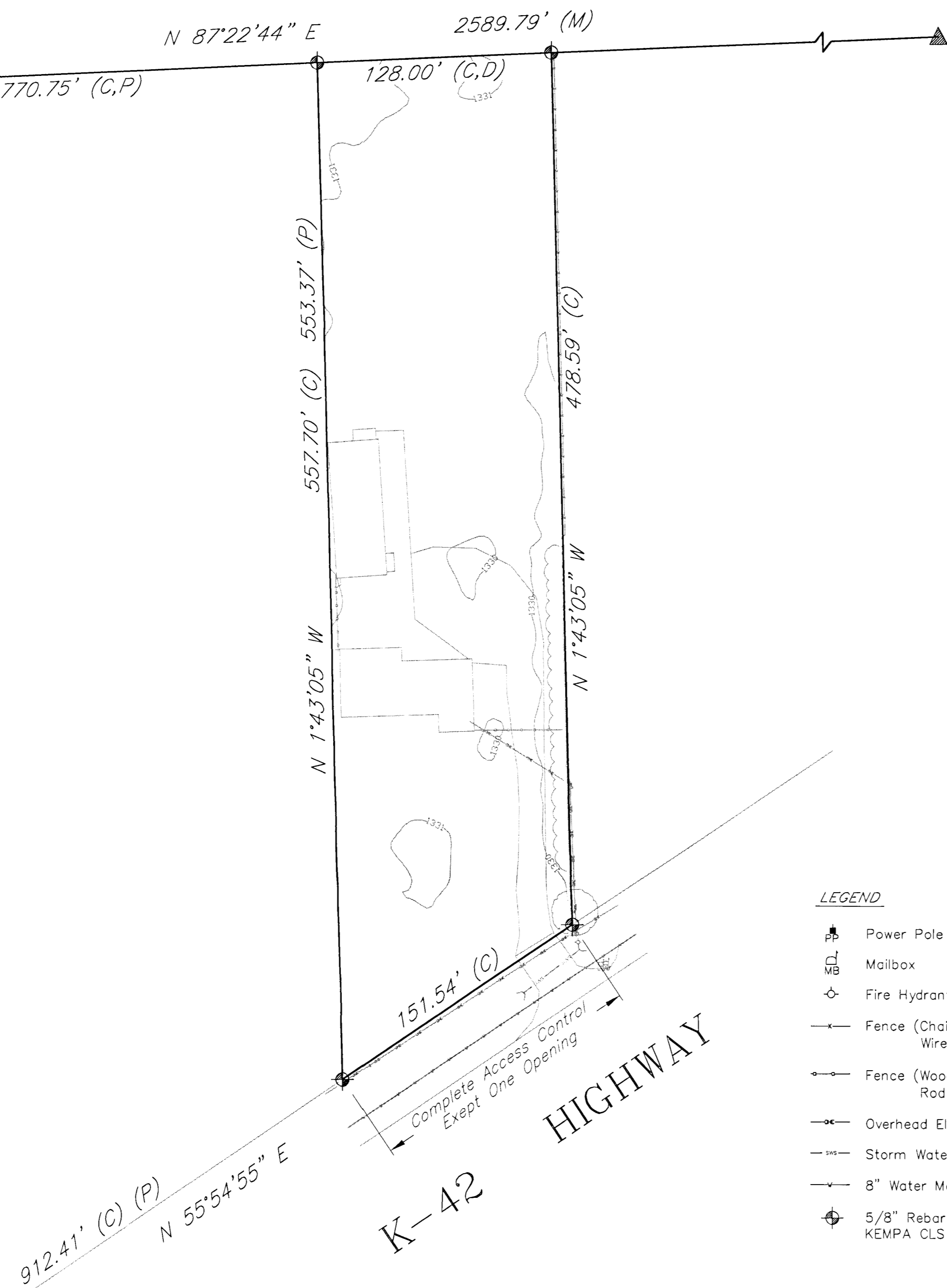
Center Section
Sec. 8-T28S-R1W
Fd. 1/2" Rebar(PEC)

One-Step Final Plat Dugan Industrial Third Addition Wichita, Sedgwick County, Kansas

Part of the SW 1/4, Section 8, Township 28 South, Range 1 West of the 6th. P.M.

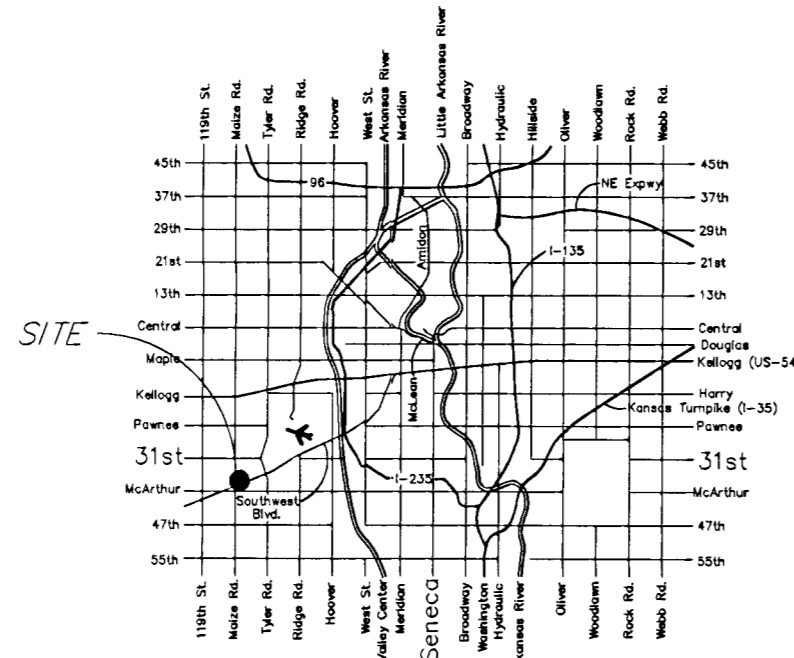
MAIZE ROAD

N 1°43'05" W 2636.08' (M)
1034.00' (C,P)

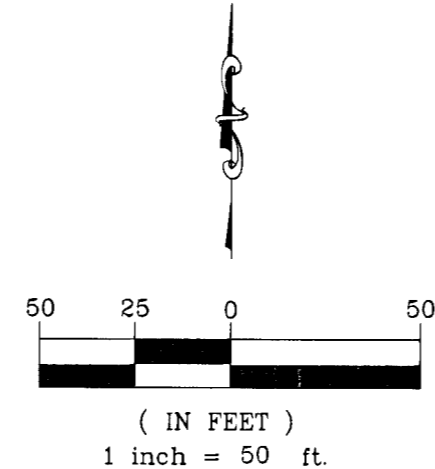


LEGEND

- Power Pole
- Mailbox
- Fire Hydrant
- Fence (Chain Link, Woven/Welded Wire, Barbed Wire, etc.)
- Fence (Wood, Brick/Mason, Rod Iron, etc.)
- Overhead Electric
- Storm Water Sewer
- 8" Water Main
- 5/8" Rebar (set) KEMPA CLS #157



LOCATION MAP



NOTES:
Utility locations are from Kansas One-Call.

Benchmarks:
City of Wichita disc on the Southeast corner of
hubguard on RCBC, 200 feet +/- West of
Maize Road on 31st St. South.
Elevation= 1331.96 NAVD 88 (conv.)
(1331.35 NGVD 29)

SW Cor. SW 1/4
Sec. 8-T28S-R1W
Fd. 3/4" Iron Pipe

State of Kansas)
County of Sedgwick) SS

I, Bradley C. Ward, a licensed land surveyor of the State of Kansas, do hereby certify that the following described tract of land was surveyed on the 13th day of March, 2012 and the accompanying final plat prepared and that all the monuments shown herein actually exist and their positions are correctly shown to the best of my knowledge and belief.

LEGAL DESCRIPTION

The East 128 feet of the West 898.75 feet of the SW 1/4 lying North of the K-42 Highway Right-of-Way, of Section 8, Township 28 South, Range 1 West, of the Sixth Principal Meridian, Sedgwick County, Kansas.

All easements and Rights of Way within said tract are hereby vacated by virtue of KSA 12-512(b) amended.

Bradley C. Ward, L.S. #920

State of Kansas)
County of Sedgwick) SS

Know all men by these presents, that we, the undersigned, have caused the land described in the surveyor's certificate to be platted into a Lot and Block, to be known as Dugan Industrial Third Addition, Wichita, Sedgwick County, Kansas. Any easements are hereby granted as indicated for constructing, maintaining, operating, and repairing public utilities. The access controls are hereby granted to the appropriate governing body as shown hereon. A drainage plan has been developed for the plat and all drainage easements, rights-of-way, or reserves shall remain at established grades or as modified with the approval of the applicable City or County Engineer, and unobstructed to allow for the conveyance of stormwater. And further that the land contained herein is held and shall be conveyed subject to any applicable restrictions, reservations and covenants now on file or hereafter filed in the Office of the Register of Deeds of Sedgwick County, Kansas.

By: John E. Dugan, Owner Date

State of Kansas)
County of Sedgwick) SS

This instrument was acknowledged before me on this ___ day of ___, 2012, by John E. Dugan, Owner.

Notary Public
My Commission Expires: _____

State of Kansas)
City of Wichita) SS

This plat of Dugan Industrial Third Addition, Wichita, Sedgwick County, Kansas, has been submitted to and approved by the Wichita-Sedgwick County Metropolitan Area Planning Commission, Wichita, day of Kansas, Dated this ___ day of ___, 2012.
Wichita-Sedgwick County Metropolitan Area Planning Commission.

G. Nelson Van Fleet, Chair
John L. Schlegel, Secretary

State of Kansas)
City of Wichita) SS

This plat approved and all dedications shown hereon accepted by the City Council of the City of Wichita, Kansas, this ___ day of ___, 2012.
At the Direction of the City Council

Carl Brewer, Mayor
Karen Sublett, City Clerk
Entered on transfer record this ___ day of ___, 2012.

Kelly B. Arnold, County Clerk

TO: 1-11 PUBLIC WORKS ENGINEERING
FROM: 1-101
Julianne Kallman
(Plats for the 4/12/12 Subdivision Meeting)

State of Kansas)
County of Sedgwick) SS

This is to certify that this plat has been filed for record in the Office of the Register of Deeds this ___ day of ___, 2012, at ___ o'clock ___M, and is duly recorded.

Bill Meek, Register of Deeds
Tonya Buckingham, Deputy

Reviewed in accordance with K.S.A. 58-2005 on this ___ day of ___, 2012.

Tricia L. Robello, L.S. #1246
Deputy County Surveyor
Sedgwick County, Kansas

516 S. Market, Wichita, KS 67202 (316)264-0242

KEM No. 12017 Date: 3/25/12