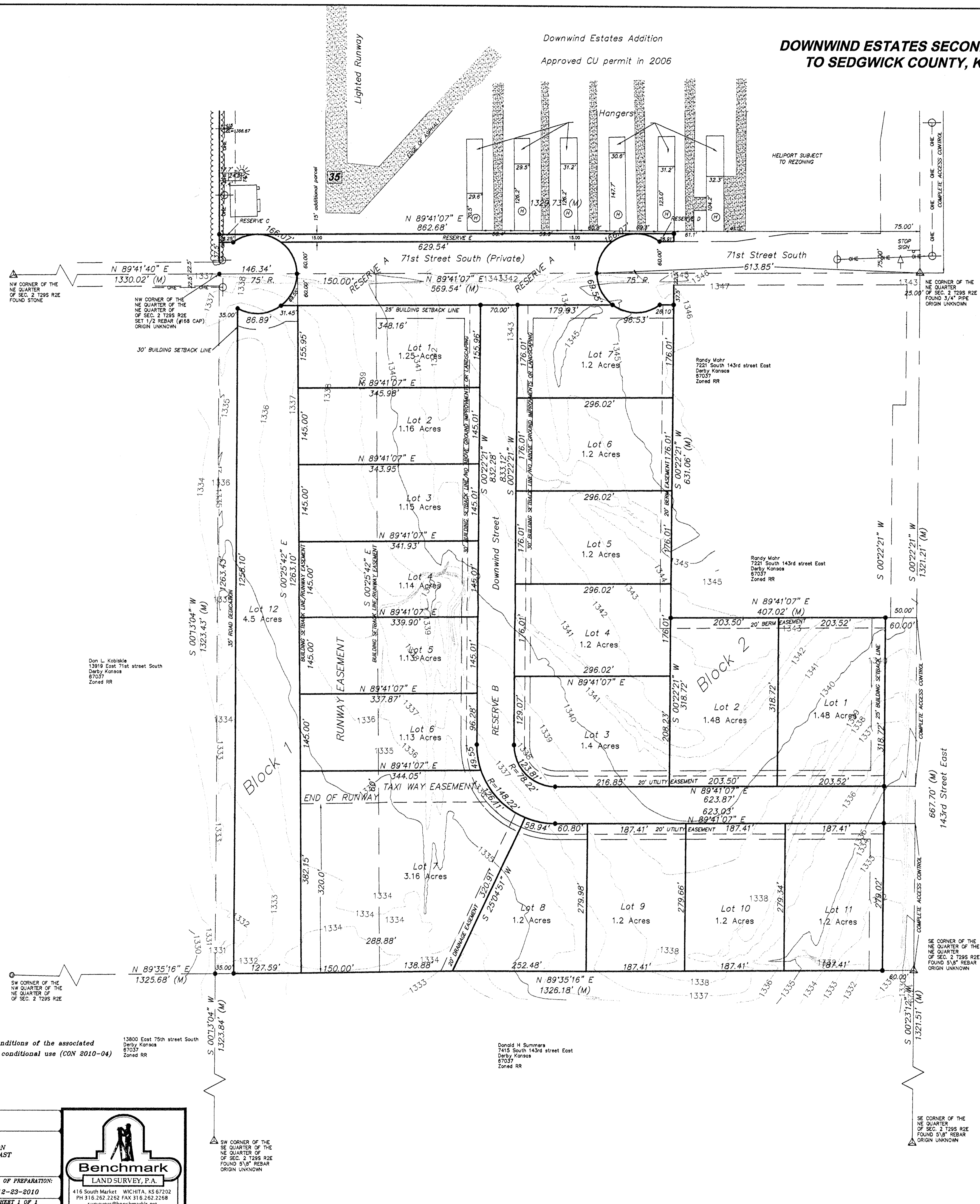


**DOWNWIND ESTATES SECOND ADDITION
 TO SEDGWICK COUNTY, KANSAS**



CERTIFICATE OF SURVEY

State of Kansas }
 County of Sedgwick } SS
 I, Chad R. Abbott the undersigned registered land surveyor of the State of Kansas, do hereby certify that the following described tract of land was surveyed on July 27, 2009. The survey was made by me or under my direct supervision and the accompanying plat DOWNWIND ESTATES SECOND ADDITION to Sedgwick County, Kansas, is a true and correct exhibit of the property surveyed, described as follows:
 Parcel A: The Northeast Quarter of the Northeast Quarter of Section 2, Township 29 South, Range 2 East of the 6th P.M., Sedgwick County, Kansas, EXCEPT that part described as the East 467.00 feet of the North 653.35 feet of the Northeast Quarter of the Northeast Quarter of Section 2, Township 29 South, Range 2 East of the 6th P.M., Sedgwick County, Kansas.
 Parcel B: The South 75' of the East Half of the Southeast Quarter of Section 35, Township 28 South, Range 2 East of the 6th P.M., Sedgwick County, Kansas, EXCEPT the East 467.00' thereof.
 Existing public easements and dedications being vacated by virtue of K.S.A. 12-512(b).

Chad R. Abbott L.S. #1340

OWNER'S CERTIFICATE

State of Kansas }
 County of Sedgwick } SS
 Know all men by these presents that we the undersigned owners of the land as above set forth in the Surveyor's Certificate, have caused the same to be surveyed and plotted into lots, blocks and reserves. The same to be known as DOWNWIND ESTATES SECOND ADDITION TO SEDGWICK COUNTY, KANSAS. The 60' Street Right-of-Way along 143rd Street East is hereby dedicated to and for the use of the public. Reserve A is hereby granted and provided for runway extension, private residential street, avigational taxiway use, also provides for emergency access easement for Sedgwick County Fire Department, Sedgwick County EMS, Sedgwick County Sheriff's Office, Rose Hill Fire, Boeing Fire, McConnell Fire, Butler County EMS, Derby Fire and EMS, Rose Hill School District and the Derby Post Office, and also provides for a utility easement. The vacated portion of 71st Street South Right-of-Way contained within said Reserve A is a contingent street dedication meeting current subdivision standards, to be activated at the discretion of the governing body if and when the airport operation is abandoned or upon such time the governing body find it necessary. Reserve B is hereby granted for use as a private residential street and for avigational use. Reserves C, D and E are hereby granted for avigational and private use. The 35' Street Right-of-Way along the West property line as indicated is hereby dedicated to and for the use of the public. Utility easements are hereby granted as indicated for the construction and maintenance of all public utilities. Runway Easement is hereby granted as indicated, the runway easement is dedicated for the use of avigational traffic, allows for future runway extension, allows for runway 35 approach and runway 17 overrun. Access control as shown on the face of the plat is hereby granted to the appropriate governing body. The Bern Easement is hereby granted as indicated and allows for the construction of landscaping terms. The building setback line/safe zone Easements are hereby granted as indicated to prohibit the construction of above ground improvements. The Drainage Easement is hereby granted as indicated on Lot 7 Block A. The Taxiway Easements are hereby granted as indicated for the use of avigational traffic. The private road Downwind Drive is hereby granted as indicated for the use as a private residential street and for avigational use. A drainage plan has been developed for the plat and all drainage easements, right-of-ways, or reserves shall remain at established grades or as modified with the approval of the applicable City or County Engineer, and will remain unobstructed to allow for the conveyance of storm water.

Paul A. Brackeen Tasha D. Brackeen
 Greg O. Thomas, for Crosswinds Aviation, Inc.

NOTARY CERTIFICATE

State of Kansas }
 County of Sedgwick } SS
 BE IT REMEMBERED, that on this _____ Day of _____, 2011, before me the undersigned, a Notary Public in and for the County and State aforesaid, came Paul A. Brackeen, Tasha D. Brackeen and Greg Thomas to me personally known to be the same persons who executed the foregoing instrument of writing and duly acknowledged the execution of the same.
 IN WITNESS WHEREOF, I have hereunto set my hand and affixed my official seal, the day and year above written.
 _____ Notary Public
 My Appointment Expires: _____

DATE OF TOPOGRAPHICAL SURVEY: JULY, 2009

LEGEND:

- (M) = MEASURED OR CALCULATED FROM MEASUREMENT
- (P) = PLATTED
- = SET 1/2" REBAR WITH CLS #168 CAP
- ▲ = FOUND MONUMENT (AS NOTED)
- = CALCULATED POINT
- ⊕ = POWER POLE

PLANNING AGENCY CERTIFICATE

State of Kansas }
 County of Sedgwick } SS
 This plat of DOWNWIND ESTATES SECOND ADDITION TO SEDGWICK COUNTY, KANSAS has been submitted to and approved by the Wichita-Sedgwick County Metropolitan Area Planning Commission, Wichita, Kansas.
 Dated this _____ Day of _____, 2011.
 WICHITA-SEDGWICK COUNTY METROPOLITAN PLANNING COMMISSION
 G. Nelson Van Fleet, Chairman
 John L. Schlegel, Secretary

COUNTY SURVEYOR CERTIFICATE

Reviewed in accordance with K.S.A. 58-2005 on this _____ Day of _____, 2011.
 Tricia L. Robello #1248
 Deputy County Surveyor
 Sedgwick County, Kansas
 State of Kansas }
 County of Sedgwick } SS
 This plat of DOWNWIND ESTATES SECOND ADDITION TO SEDGWICK COUNTY, KANSAS has been submitted to and approved by the Board of County Commissioners of Sedgwick County, Kansas, on this _____ day of _____, 2011.
 Karl Peterjohn, Chairman ATTEST: Kelly B. Arnold, County Clerk
 Entered on transfer record this _____ Day of _____, 2011.
 Kelly B. Arnold, County Clerk

REGISTER OF DEEDS CERTIFICATE

State of Kansas }
 County of Sedgwick } SS
 This is to certify that this plat has been filed for record in the office of the Register of Deeds, this _____ day of _____ at _____ o'clock _____M; and is duly recorded.
 Bill Meek, Register of Deeds
 Tonya Buckingham, Deputy

Notes:
 1. Elevation Datum = NAVD 88
 2. This Plat is subject to the conditions of the associated vacation case (VAC 2010-12 and conditional use (CON 2010-04)



JOB DESCRIPTION: PLAT	DATE OF PREPARATION: 12-23-2010
PREPARED FOR: CROSSWINDS AVIATION 7001 SOUTH 143RD EAST DERBY, KANSAS	JOB NUMBER: 10849
JOB LOCATION: 143 RD & 71 ST	DRAWN BY: C.R.A. CHECKED BY: C.A.

