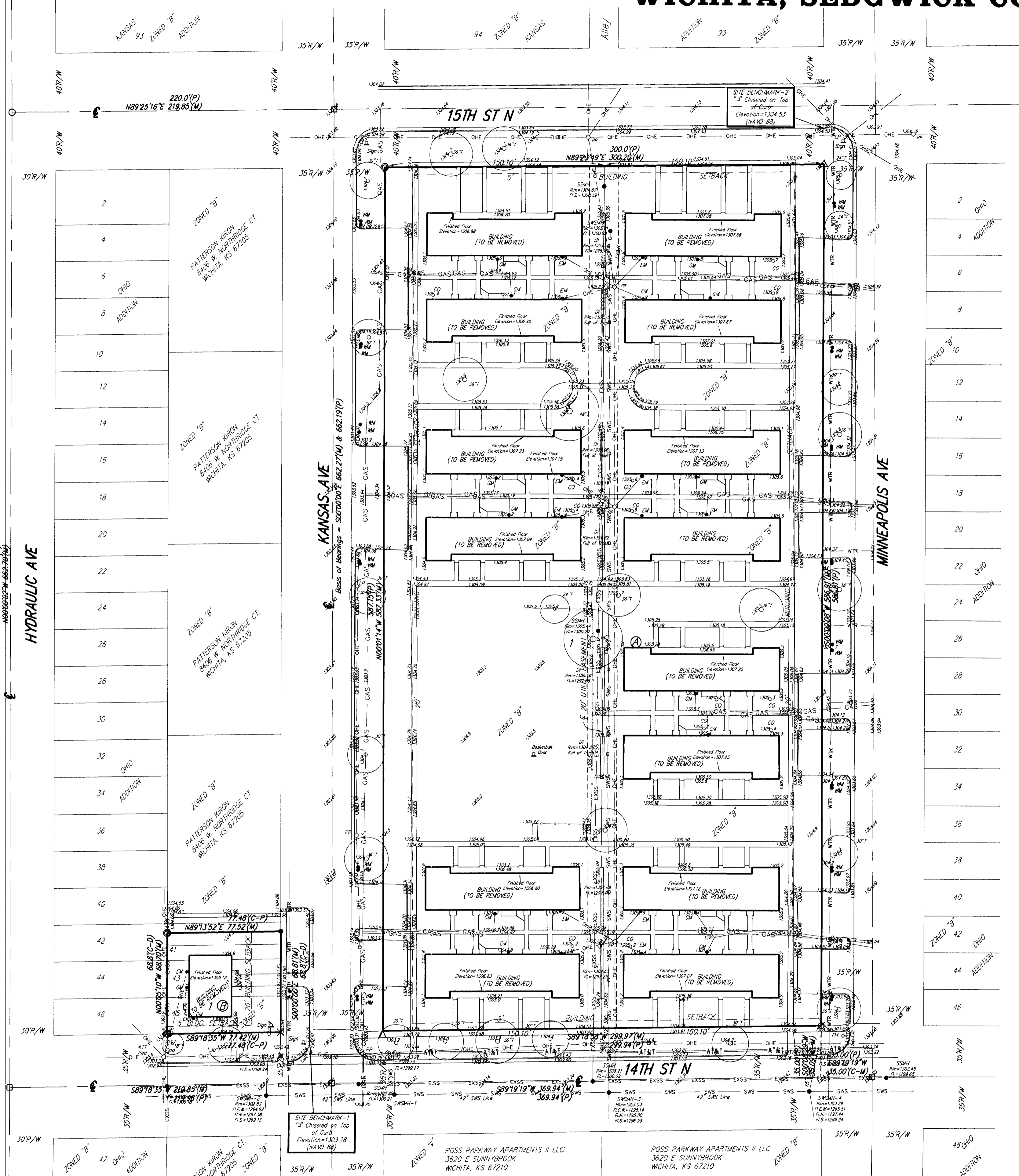


ONE-STEP FINAL PLAT

FRENCH QUARTER ADDITION

WICHITA, SEDGWICK COUNTY, KANSAS



State of Kansas) SS
 Sedgwick County) We, Baughman Company, P.A., Surveyors in aforesaid county and state do hereby certify that we have surveyed and platted "FRENCH QUARTER ADDITION", Wichita, Sedgwick County, Kansas and that the accompanying plat is a true and correct exhibit of the property surveyed, described as all of Lots 1, 2, 3, 4, 5, 6, 7, 8, 9, 10, 11, 12, 13, 14, 15, 16, 17, 18, 19, 20, 21, 22, 23, 24, 25, 26, 27, 28, 29, 30, 31, 32, 33, 34, 35, 36, 37, 38, 39, 40, 41, 42, 43, 44, 45, and 46, Block 3, and the alley in said Block 3, all as platted and dedicated in vacated Ohio Addition to the City of Wichita, Kansas, Sedgwick County, Kansas, TOGETHER with the east half of the south 10 feet of Lot 41 and the east half of Lots 43 and 45, Block 4, in said Ohio Addition.

Existing public easements and dedications being vacated by virtue of K.S.A. 12-512(b).
 Baughman Company, P.A.

Michael G. Conrey, Surveyor

Know all men by these presents that we, the undersigned, have caused the land in the surveyors certificate to be platted into Lots and Blocks, to be known as "FRENCH QUARTER ADDITION", Wichita, Sedgwick County, Kansas. The utility easements are hereby granted as indicated for the construction and maintenance of all public utilities. The drainage and utility easements are hereby granted as indicated for drainage purposes and for the construction and maintenance of all public utilities. The drainage easements are hereby granted as indicated for drainage purposes.

Mennonite Housing Rehabilitation Services, Inc. a Kansas corporation

Andrew L. Bias, President

State of Kansas) SS
 Sedgwick County) The foregoing instrument acknowledged before me, this _____ day of _____, 2011, by Andrew L. Bias, President of Mennonite Housing Rehabilitation Services, Inc., a Kansas corporation, on behalf of the corporation.

_____, Notary Public

My App'l. Exp. _____

This plat of "FRENCH QUARTER ADDITION, Wichita, Sedgwick County, Kansas has been submitted to and approved by the Wichita-Sedgwick County Metropolitan Area Planning Commission, Wichita, Kansas.
 Dated this _____ day of _____, 2011.
 Wichita-Sedgwick County Metropolitan Area Planning Commission

Shawn Farney, Chair

John L. Schlegel, Secretary

This plat approved and all dedications shown hereon accepted by the City Council of the City of Wichita, Kansas, this _____ day of _____, 2011.

Carl Brewer, Mayor

Karen Sublett, City Clerk

Reviewed in accordance with K.S.A. 58-2005 on this _____ day of _____, 2011.

Tricia L. Robello, L.S. #1246
 Deputy County Surveyor
 Sedgwick County, Kansas

Entered on transfer record this _____ day of _____, 2011.

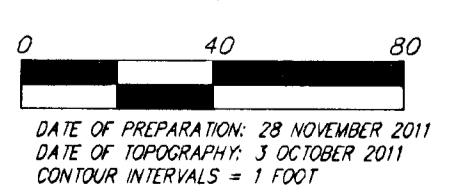
Kelly B. Arnold, County Clerk

State of Kansas) SS
 Sedgwick County) This is to certify that this plat has been filed for record in the office of the Register of Deeds, this _____ day of _____, 2011 at _____ o'clock _____ M; and is duly recorded.

Bill Meek, Register of Deeds

Tonya Buckingham, Deputy

- (C) = Calculated
- CH = Chord Length
- CB = Chord Bearing
- Δ = Delta Angle
- D = Degree of Curve
- (D) = Described
- L = Arc Length
- (M) = Measured
- (P) = Platted
- (Pr) = Prorated
- R = Radius
- = #4 Baughman Rebar Set
- = 1 1/4" Iron Pipe in Thimble Found
- = 3/4" Iron Pipe in Thimble Found
- △ = 1/4" Iron Pipe Found
- × = Chiseled "X" Set
- = 1/2" Iron Pipe Found
- = #4 LS 950 Rebar Found
- ATT = ATT Pole = A.T.&T. Telephone Pedestal
- CD = Casing
- EM = Electric Meter
- GM = Gas Meter
- LP = Light Pole
- SP = Sign
- SSM = Secondary Sewer Manhole
- SSM = Storm Sewer Manhole
- MM = Meter Well



NOTE:
 A master grading plan for drainage has been developed for this subdivision and is on file with the City of Wichita, Kansas. All drainage easements, right-of-ways, or reserves shall remain at established grades or as modified with the approval of the City Engineer of the City of Wichita, Kansas. No obstructions which impede the flow of this drainage system shall be allowed.

FRENCH QUARTER ADDITION

28 NOVEMBER 2011

Baughman Company, P.A.
 315 Ellis St. Wichita, KS 67211 P 316-262-1211 F 316-262-0149

ENGINEERING | SURVEYING | PLANNING | LANDSCAPE ARCHITECTURE

E:\PROJECTS\OHIO2\ADDITION_11-11\FR19\PLAT\OH2ND.OSFDWG.RKX