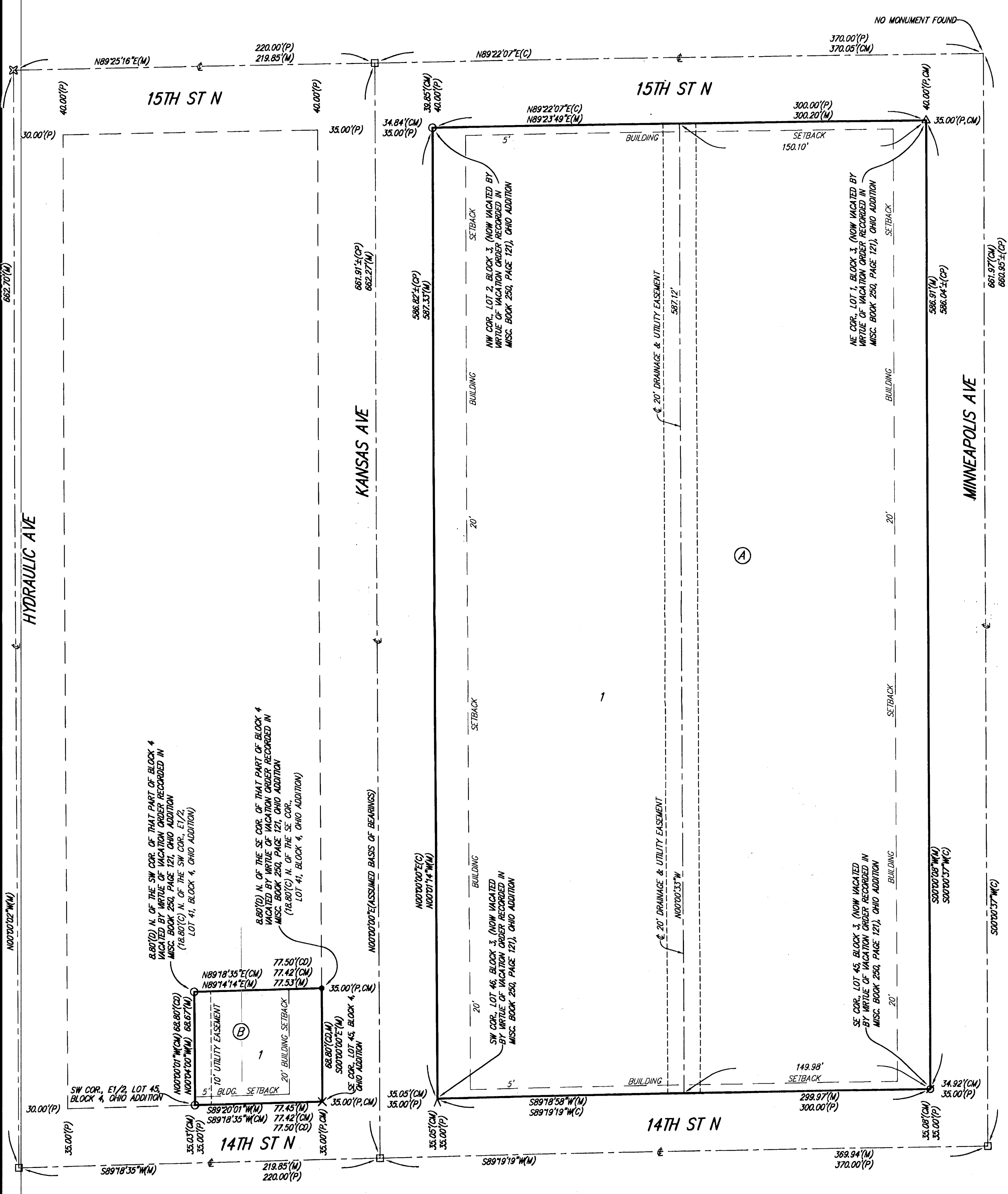


FRENCH QUARTER ADDITION

WICHITA, SEDGWICK COUNTY, KANSAS

TO: 1-71 FROM: 1-101
 ENGINEERING Kim Pelton
 3 TRACINGS/Hack
 FINAL TRACIN - French Quarter
 - Roman Winter
 - Campbell Auto



State of Kansas) SS We, Baughman Company, P.A., Surveyors in
 Sedgwick County) aforesaid county and state do hereby certify that we have surveyed and
 platted "FRENCH QUARTER ADDITION", Wichita, Sedgwick County, Kansas and
 that the accompanying plat is a true and correct exhibit of the property
 surveyed, described as all of Lots 1, 2, 3, 4, 5, 6, 7, 8, 9, 10, 11, 12, 13,
 14, 15, 16, 17, 18, 19, 20, 21, 22, 23, 24, 25, 26, 27, 28, 29, 30, 31, 32,
 33, 34, 35, 36, 37, 38, 39, 40, 41, 42, 43, 44, 45, and 46, Block 3,
 (said Block 3 now vacated by virtue of the Vacation Order described and
 recorded in Misc. Book 250 at Page 121), Ohio Addition to the City of
 Wichita, Kansas, Sedgwick County, Kansas, together with all of the alley in
 said vacated Block 3, together with the south 8.80 feet of the north 15.00
 feet of the east half of Lot 41, Block 4, in said Ohio Addition, (said south
 8.80 feet now being the south 8.80 feet of that part of said Block 4 now
 vacated by virtue of the Vacation Order described and recorded in Misc.
 Book 250 at Page 121), together with the south 10.00 feet of the east
 half of Lot 41 in said Block 4, and together with the east half of Lots 43
 and 45 in said Block 4.
 All being situated in the Southwest Quarter of Sec. 10,
 Twp. 27-S, R-1-E of the 6th P.M., Sedgwick County, Kansas
 Existing public easements and dedications
 being vacated by virtue of K.S.A. 12-512b.
 Baughman Company, P.A.

Michael G. Conroy, Surveyor
 Michael G. Conroy

Know all men by these presents that we,
 the undersigned, have caused the land in the surveyors certificate to be
 platted into Lots and Blocks, to be known as "FRENCH QUARTER
 ADDITION", Wichita, Sedgwick County, Kansas. The utility easement is
 hereby granted as indicated for the construction and maintenance of all
 public utilities. The drainage and utility easement is hereby granted as
 indicated for drainage purposes and for the construction and maintenance
 of all public utilities.
 French Quarter, LLC,
 a Kansas limited liability company

Andrew L. Bias, Managing Member
 Andrew L. Bias, President of Kansas
 Affordable Housing Corporation,
 a Kansas not-for-profit corporation

State of Kansas) SS The foregoing instrument acknowledged before
 Sedgwick County) me, this 15th day of February, 2012, by Andrew L. Bias, President
 of Kansas Affordable Housing Corporation, a Kansas not-for-profit
 corporation, as Managing Member of French Quarter, LLC, a Kansas
 limited liability company, on behalf of the limited liability company.

JUDITH M. TERHUNE
 Notary Public - State of Kansas
 My App'l. Expires 11-7-13
 Judith M. Terhune, Notary Public
 JUDITH M. TERHUNE

We, the undersigned holders of a mortgage on the
 above described property, do hereby consent to this plat of "FRENCH
 QUARTER ADDITION", Wichita, Sedgwick County, Kansas.
 Mennonite Housing Rehabilitation Services, Inc.,
 a Kansas not-for-profit corporation
 Andrew L. Bias, President/CEO
 ANDREW L. BIAS

State of Kansas) SS The foregoing instrument acknowledged be-
 Sedgwick County) fore me, this 15th day of February, 2012, by Andrew L. Bias,
 President/CEO of Mennonite Housing Rehabilitation Services, Inc., a
 Kansas not-for-profit corporation, on behalf of the corporation.
 JUDITH M. TERHUNE
 Notary Public - State of Kansas
 My App'l. Expires 11-7-13
 Judith M. Terhune, Notary Public
 JUDITH M. TERHUNE

This plat of "FRENCH QUARTER ADDITION",
 Wichita, Sedgwick County, Kansas has been submitted to and approved by
 the Wichita-Sedgwick County Metropolitan Area Planning Commission,
 Wichita, Kansas.
 Dated this _____ day of _____, 2011.
 Wichita-Sedgwick County Metropolitan Area Planning Commission

Shawn Farney, Chair
 John L. Schlegel, Secretary

This plat approved and all dedications
 shown hereon accepted by the City Council of the City of Wichita,
 Kansas, this _____ day of _____, 2012.

Carl Brewer, Mayor
 Karen Sublett, City Clerk

Reviewed in accordance with K.S.A. 58-2005
 on this _____ day of _____, 2012.

Tricia L. Robello, L.S. #1246
 Deputy County Surveyor
 Sedgwick County, Kansas

Entered on transfer record this _____ day
 of _____, 2012.
 Kelly B. Arnold, County Clerk

State of Kansas) SS This is to certify that this plat has been
 Sedgwick County) filed for record in the office of the Register of Deeds, this _____ day
 of _____, 2012 at _____ o'clock _____ M; and is duly recorded.

Bill Meek, Register of Deeds
 Tonya Buckingham, Deputy

We, the undersigned holders of mortgages on the
 above described property, do hereby consent to this plat of "FRENCH
 QUARTER ADDITION", Wichita, Sedgwick County, Kansas.
 Horizon Bank
 Scott Arao, Vice President
 SCOTT ARAO

State of Nebraska) SS The foregoing instrument acknowledged be-
 Lancaster County) fore me, this 15th day of February, 2012, by Scott Arao,
 Vice President of Horizon Bank, on behalf of the bank.

Barbara L. Reuter, Notary Public
 BARBARA L. REUTER

Baughman Company, P.A.
 315 Ellis St. Wichita, KS 67211 P 316-262-7211 F 316-262-0149
 ENGINEERING | SURVEYING | PLANNING | LANDSCAPE ARCHITECTURE

NOTE: A DRAINAGE GRADING PLAN FOR DRAINAGE HAS BEEN DEVELOPED FOR THIS
 ADDITION AND IS ON FILE WITH THE CITY OF WICHITA, KANSAS. ALL
 DRAINAGE EASEMENTS, RIGHT-OF-WAYS, OR RESERVES SHALL REMAIN AT
 ESTABLISHED GRADES OR AS MODIFIED WITH THE APPROVAL OF THE CITY
 ENGINEER OF THE CITY OF WICHITA, KANSAS. NO OBSTRUCTIONS WHICH
 IMPED THE FLOW OF THIS DRAINAGE SYSTEM SHALL BE ALLOWED.