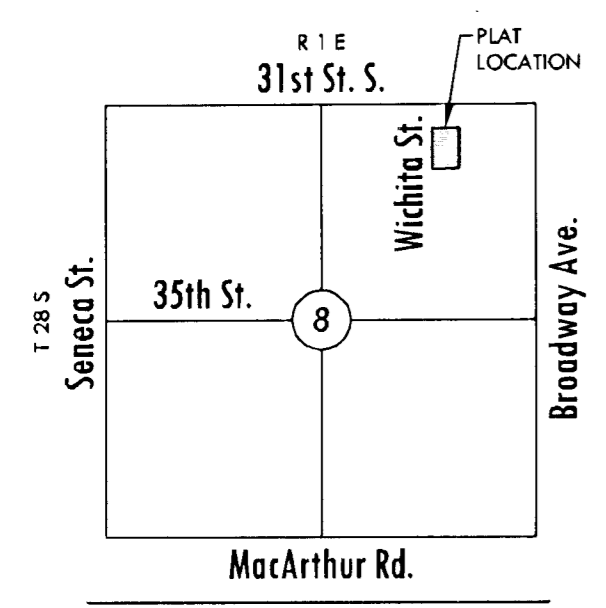


FINAL TRACING REC'D 12-6-10

FINAL PLAT

GARDENS AT WICHITA PLACE ADDITION
AN ADDITION TO WICHITA, SEDGWICK COUNTY, KANSAS



VICINITY MAP

CERTIFICATE OF SURVEY

I, Gregory J. Allison, a registered land surveyor in Kansas, do hereby certify that I have been in responsible charge of surveying and platting of "GARDENS AT WICHITA PLACE ADDITION," an addition to Wichita, Sedgwick County, Kansas, into Lots, and a Block, the same being accurately set forth in the accompanying plat and described herein:

A replat of Lots 2, 3, 4, 5, 6, 7, 8, 9, 14, 15, 16, 17, and 18, TOGETHER WITH, the west 340 feet of Lot 1, TOGETHER WITH the west 32 feet of Lots 10 and 13, American Legion Addition, TOGETHER WITH, that part of 32nd Street Circle bound by said Lots and portions of said Lots, Wichita, Sedgwick County, Kansas.

All streets, easements, setbacks, access controls, together with any and all other public dedications within the above described property are hereby vacated and replatted by virtue of K.S.A. 12-512(b).

I hereby certify that the details of this plat are correct to the best of my knowledge and belief this ___ day of ___, 2010.



Gregory J. Allison, PE, LS #1257
MKEC Engineering Consultants, Inc.
411 North Webb Road
Wichita, Kansas 67206

OWNER'S CERTIFICATES

Know all men by these presents that we the undersigned property owners of the land above set forth in the Registered Land Surveyor's Certificate, have caused the same to be surveyed and platted into Lots, and a Block, the same to be known as "GARDENS AT WICHITA PLACE ADDITION," an addition to Wichita, Sedgwick County, Kansas.

Easements for the construction and maintenance of public utilities and drainage, as indicated hereon, are hereby granted to the public.

A drainage plan has been developed for this plat. All drainage easements, rights-of-ways, or reserves shall remain at established grades or as modified with the approval of the applicable City or County Engineer, and unobstructed to allow for the conveyance of storm water.

Mental Health Association of South Central Kansas, a Kansas not for profit corporation

_____, President and CEO
Dr. Rose Mary Mohr, President and CEO

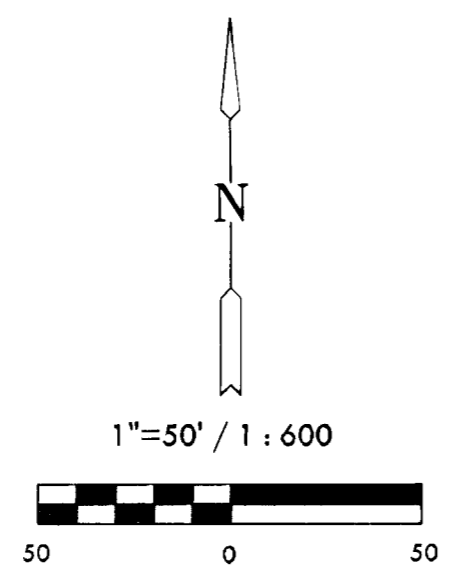
STATE OF KANSAS, SEDGWICK COUNTY) ss:
This instrument was acknowledged before me on ___ day of ___, 2010, by Dr. Rose Mary Mohr, President and CEO, Mental Health Association of South Central Kansas, a Kansas not for profit corporation.

IN WITNESS WHEREOF, I have hereunto set my hand and affixed my official seal, the day and year last above written.

Notary Public: _____, Notary Public
My Term Expires: _____

LEGEND

- Date of Survey: Oct, 2010
- △ = Section Corner Monument Found
- = Found survey monument see annotation for type
- = Set 3/8" rebar w/ MKEC CLS 39 id. cap
- (M) = Measured
- (CM) = Calculated from measured
- (P) = Platted
- (D) = Described

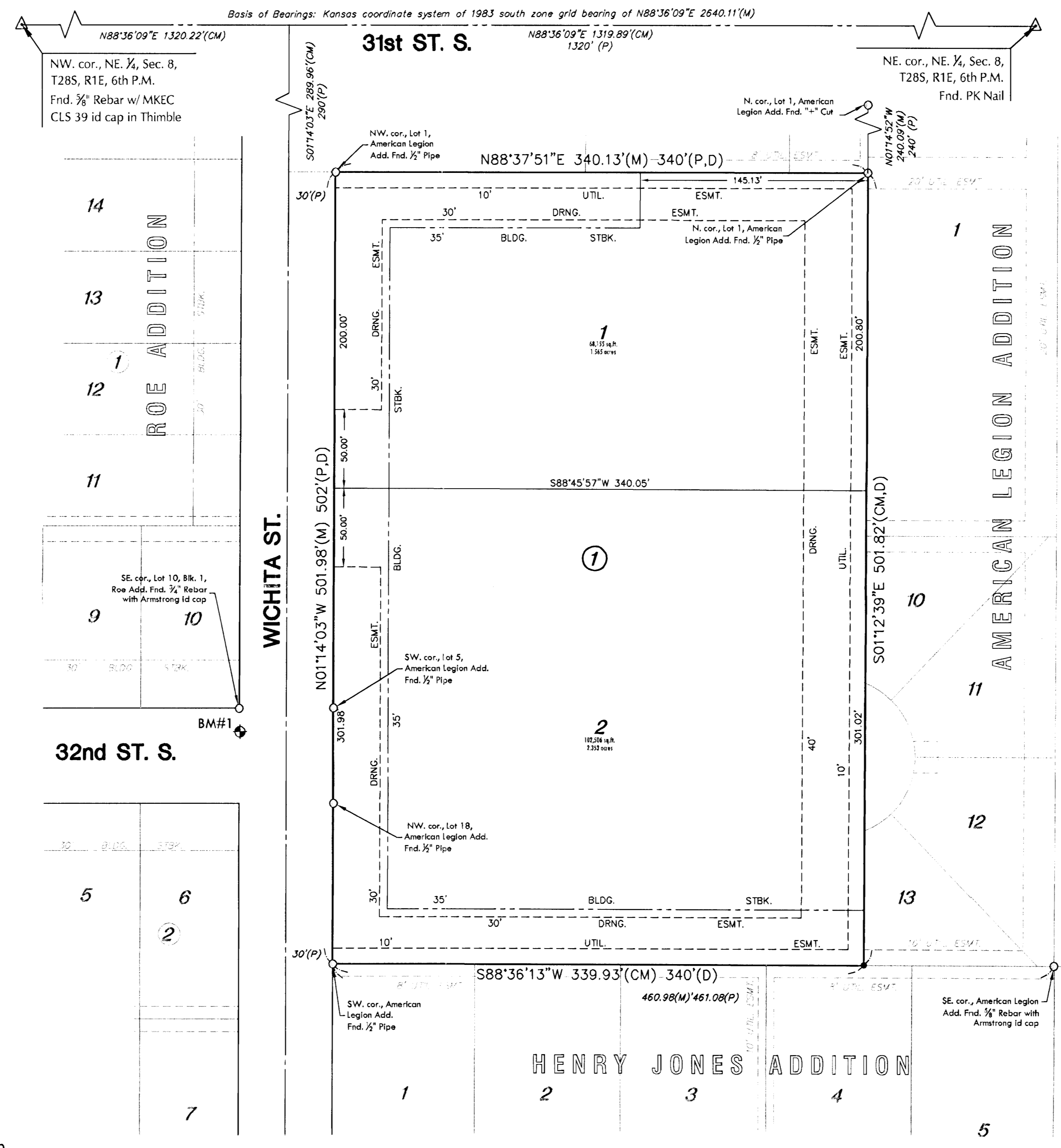


Basis of Bearing: Kansas coordinate system of 1983 south zone grid bearing of N88°36'09"E along the N. line of NE 1/4, Sec. 8, T28S, R1E, 6th P.M.

This plat is surveyed and platted on NAVD88-09 using Kansas state plane south zone coordinates, modified to the surface, having a combined adjustment scale factor of 1.000120014401728

BENCH MARK

BM #1 Square cut west end of northwest return at Wichita St. and 32nd St. S. ELEV. = 1281.69 NAVD88



PLANNING COMMISSION CERTIFICATE

This plat of "GARDENS AT WICHITA PLACE ADDITION" has been submitted to and approved by the Wichita-Sedgwick County Metropolitan Area Planning Commission, Wichita, Kansas.

Dated this ___ day of ___, 2010

WICHITA-SEDGWICK COUNTY METROPOLITAN AREA PLANNING COMMISSION

_____, Chair
Debra Miller Stevens, Chair

Attest: _____, Secretary
John L. Schlegel, Secretary

GOVERNING BODY CERTIFICATE

The dedications shown on this plat are hereby accepted and this plat is hereby approved by the governing body of the City of Wichita, Kansas.

Dated this ___ day of ___, 2010

At the direction of the City Council.

_____, Mayor
Carl Brewer, Mayor

Attest: _____, City Clerk
Karen Sublett, City Clerk

TRANSFER RECORD

STATE OF KANSAS, SEDGWICK COUNTY) ss:

Entered on transfer record this ___ day of ___, 201__

_____, County Clerk
Kelly B. Arnold, County Clerk

REGISTER OF DEEDS CERTIFICATE

STATE OF KANSAS, SEDGWICK COUNTY) ss:

This is to certify that this instrument was filed for record in the Register of Deeds office this ___ day of ___, 201__ at ___ o'clock ___ M; and is duly recorded.

_____, Register of Deeds
Bill Meek, Register of Deeds

Attest: _____, Deputy
Tonya E. Buckingham, Deputy

COUNTY SURVEYOR

STATE OF KANSAS, SEDGWICK COUNTY) ss:

Reviewed in accordance with K.S.A. 58-2005 on this ___ day of ___, 2010.

_____, Deputy County Surveyor
Tricia L. Robello, LS #1246
Deputy County Surveyor
Sedgwick County, Kansas



411 N. WEBB ROAD
WICHITA, KS. 67206
316-684-9600

12/10/2010 10:53:28 AM - Mental Health Assoc - 12/7/2010 2:10:58 PM CST