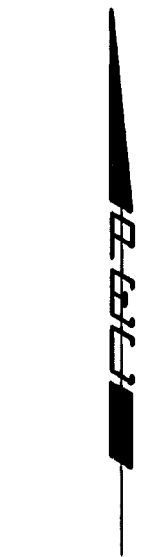
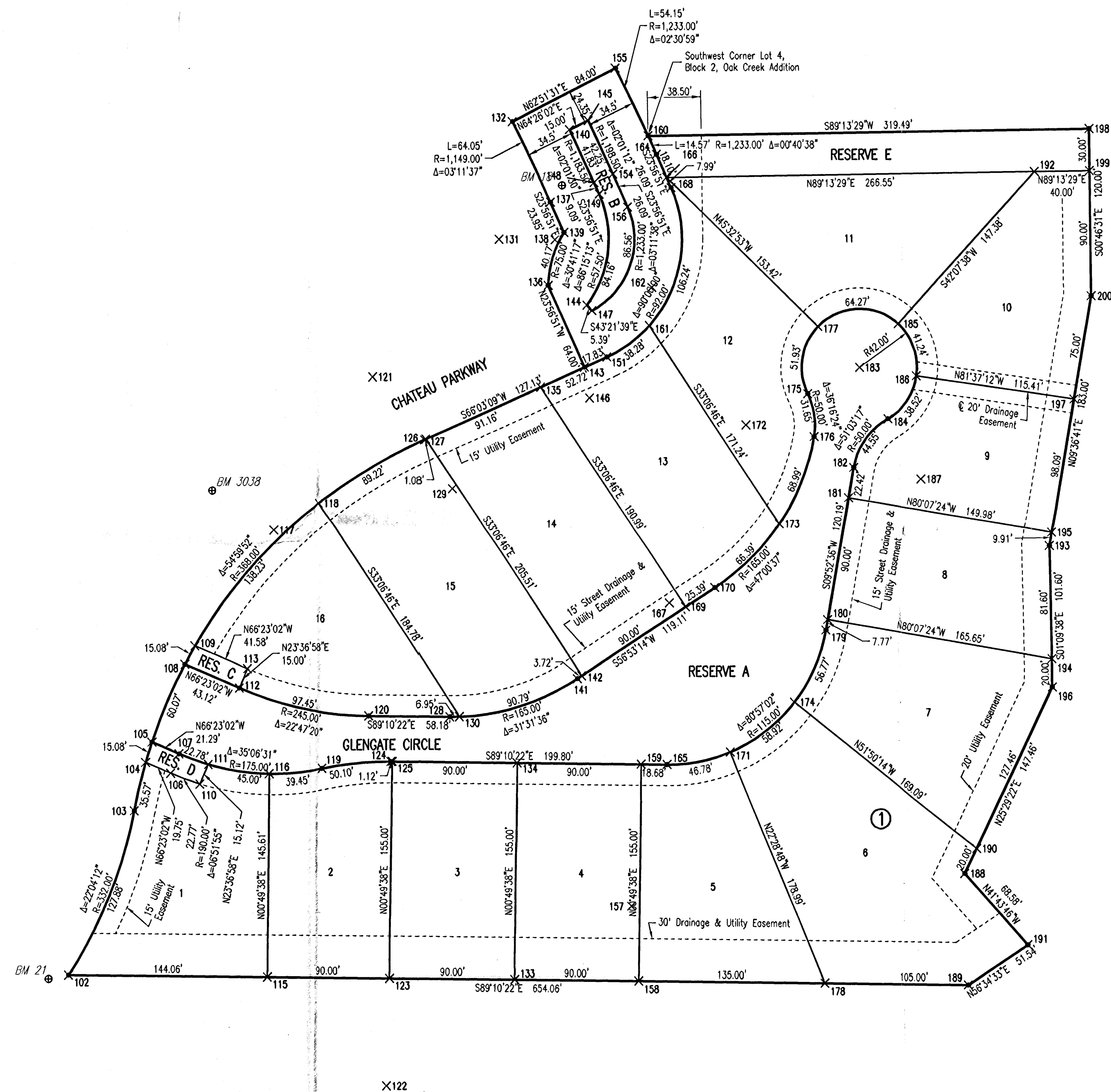


# GLENVIEW

## AN ADDITION TO WICHITA, SEDGWICK COUNTY, KANSAS

### BUBBLE MAP



SCALE: 1" = 50'

• = 1/2" REBAR W/PEC CAP UNLESS OTHERWISE NOTED

#### BENCHMARKS

- BM 18  
CHISELED "d" ON CENTER FACE CURB INLET ON WEST SIDE CHATEAU PARKWAY, 600' SOUTH OF 21ST ST. NORTH NEAR NORTHWEST CORNER GLENVIEW ADDITION.  
ELEV. = 1378.64 N.G.V.D.
- BM 21  
CHISELED "d" ON WEST SIDE OF CONCRETE BASE FOR LIGHT POLE ON EAST SIDE CHATEAU PARKWAY, 1,200'± SOUTH OF 21ST ST. NORTH NEAR SOUTHWEST CORNER GLENVIEW ADDITION.  
ELEV. = 1389.73 N.G.V.D.
- BM 3038  
CITY DISC ON WEST TOP OF CURB CHATEAU PARKWAY, 165' NORTH OF GLENVIEW CIRCLE.  
ELEV. = 1384.11 N.G.V.D.

MINIMUM PAD ELEVATIONS (LOWEST OPENING) SHALL BE AS FOLLOWS:		
BLOCK 1	CITY DATUM	N.G.V.D.
LOT 6		1385.0
LOT 7		1379.0
LOTS 8-10		1379.0

PLOT 5085 150 05-06-2012 4:41:01 PM by JDS/LL/SHD/200  
 01/20/11 1:39:00 11339 Bubble map