

LEGEND

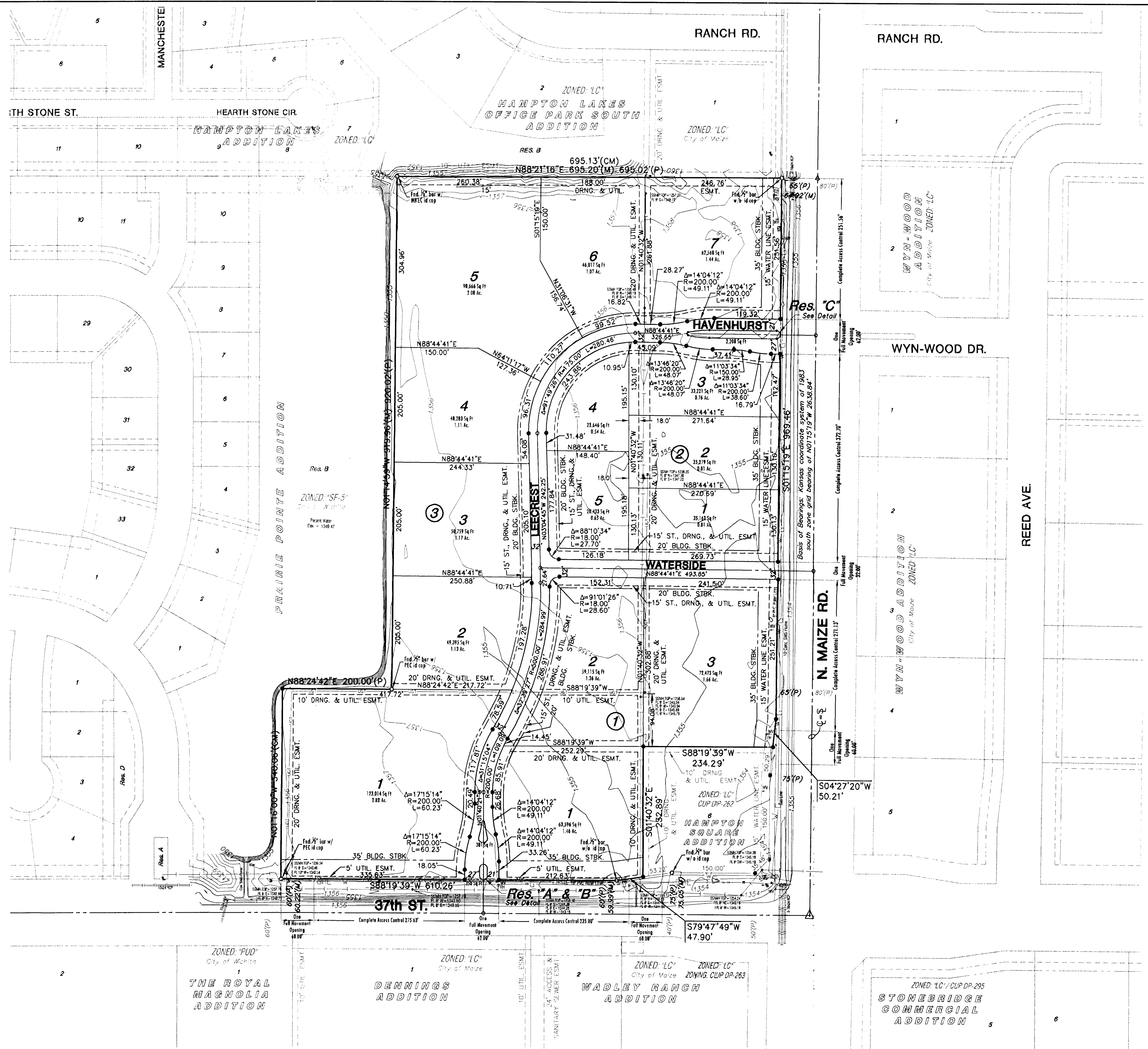
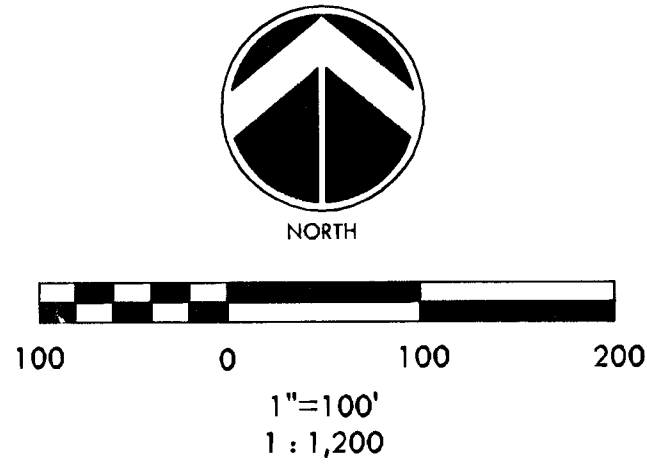
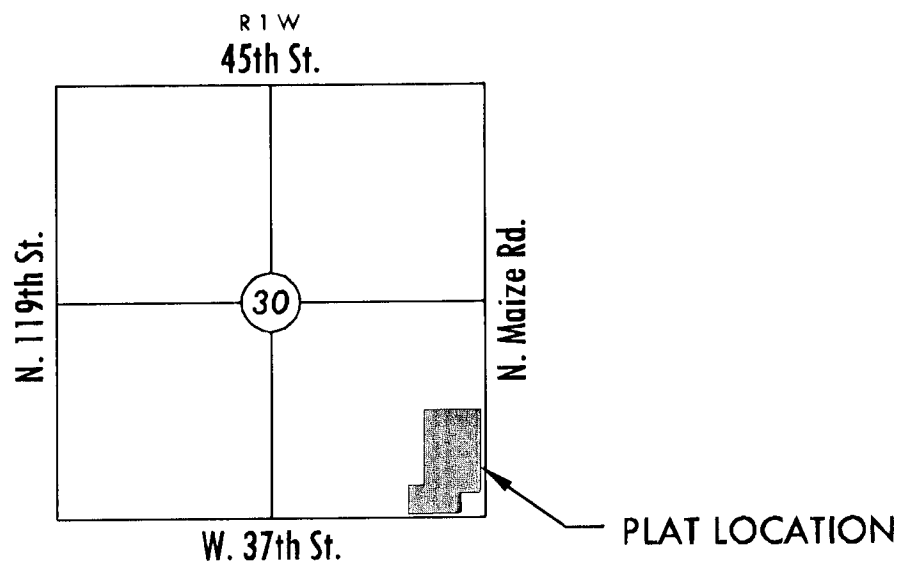
- ⊙ - CONIFEROUS TREE & DIAMETER
- - DECIDUOUS TREE & DIAMETER
- ⊙ - SIGN
- ⊙ - POWER POLE AND GUY ANCHOR
- ⊙ - ELECTRIC BOX
- ⊙ - LIGHT POLE
- ⊙ - FIRE HYDRANT
- ⊙ - WATER VALVE
- ⊙ - WATER METER
- ⊙ - SECTION CORNER
- ⊙ - BENCHMARK
- - EASEMENT
- - BUILDING SETBACK
- - FENCE
- - STORM SEWER PIPE
- - WATER LINE
- - SANITARY SEWER LINE
- - GAS LINE
- - GAS PIPELINE
- - TELEPHONE LINE
- - UNDERGROUND ELECTRIC LINE
- - OVERHEAD ELECTRIC
- - FIBER OPTIC CABLE

LEGAL DESCRIPTION

Lots 1, 2, 3, 4, 5, 7, 8, 9, Block 1, Hampton Square Addition, an addition to Wichita, Sedgwick County, Kansas.

NOTES

1. LOCATION: In the Northwest portion of the City of Wichita in an area adjoining the City of Maize. The property has access to K-96 via Maize Rd. and or Ridge Road. Existing surrounding land uses include newly constructed WSU campus and restaurants, suburban residential, commercial, office, and senior housing to the northwest, agricultural production.
2. LOT TOTAL - 15 Commercial Lots
3. ANNEXATION: Lies within the City of Wichita and adjoins the City of Maize to the north, south, and east.
4. EXISTING USE: Agricultural
5. ZONING: Existing / proposed - "LC" w/ CUP DP 262 overlay THIS PLAT SHALL CONFORM TO THE RECITALS OF CUP DP 262.
6. PLAT AREA: Gross - 20.34 Ac.
Net - 18.95 Ac.
7. SURVEY DATE: April 8th, 2011 (by MKEC)
8. PUBLIC UTILITIES: Municipal sanitary sewer shall be extended to the western lots. Municipal water installed in streets.
9. LEGAL DESCRIPTION: See hereon
10. ACCESS CONTROLS: As shown hereon
11. RESERVES: All reserves are planned for irrigation, landscaping, monuments, drainage, and utilities in designated areas.
12. FLOOD: According to FEMA FIRM Community Unit Panel 20173C0190E, Effective Date Feb. 2nd, 2007; this property lies within flood zone "X", "Areas determined to be outside the 0.2 % annual chance floodplain."
13. DRAINAGE: A drainage report shall accompany this plat.



PRELIMINARY PLAT

A portion of the SE. 1/4, Sec. 30, T26S, R1W, 6th P.M.

HAMPTON SQUARE SECOND ADDITION

OWNER / DEVELOPER: HAMPTON SQUARE LLC, Attn: Marvin L. Schellenberg 7926 W. 21st ST. Wichita, KS 67205 316.721.2153

MAPC Hearing: May 12th, 2011



411 N. WEBB ROAD WICHITA, KS. 67206 316 - 684 - 9600

Date submitted: April 11th, 2011 Subdivision Hearing: April 28th, 2011 J:\Projects\2010\1001000582_Premier_Hampton_Square_2nd\5-Civil\CAD\Plot\10582pre.dwg 4/11/2011 10:30:02 AM CDT

FINAL PLAT

HAMPTON SQUARE SECOND ADDITION

AN ADDITION TO WICHITA, SEDGWICK COUNTY, KANSAS

E. 1/4 cor., Sec. 30, T26S, R1W, 6th P.M.
Fnd. 3/8" Bar w/ Moehring id cap

CERTIFICATE OF SURVEY

I, Gregory J. Allison, a registered land surveyor in Kansas, do hereby certify that I have been in responsible charge of surveying and platting of "HAMPTON SQUARE SECOND ADDITION", an addition to Wichita, Sedgwick County, Kansas, into Lots, Blocks, Reserves, and Streets, the same being accurately set forth in the accompanying plat and described herein:

A replat of Lots 1, 2, 3, 4, 5, 7, 8, 9, Block 1, Hampton Square Addition, Wichita, Sedgwick County, Kansas.

All easements, rights-of-ways, building setbacks, and access controls, together with all other public dedications within the above described property, are hereby vacated and replatted by virtue of K.S.A. 12-512(b).

I hereby certify that the details of this plat are correct to the best of my knowledge and belief this ___ day of _____, 2011.

Gregory J. Allison, PE, LS #1257
MKEC Engineering Consultants, Inc.
411 North Webb Road
Wichita, Kansas 67206

OWNER'S CERTIFICATE

Know all men by these presents that the undersigned property owner of the land above set forth in the Registered Land Surveyor's Certificate, has caused the same to be surveyed and platted into Lots, Blocks, Reserves, and Streets the same to be known as "HAMPTON SQUARE SECOND ADDITION," an addition to Wichita, Sedgwick County, Kansas.

Easements for the construction and maintenance of public utilities and drainage, as indicated on the accompanying plat are hereby granted to the public.

The streets are hereby dedicated to and for the use of the public.

All abutters rights of access to or from Maize Road over and across the east line of "HAMPTON SQUARE SECOND ADDITION," are hereby granted to the appropriate governing body, as indicated hereon. All abutters rights of access to or from 37th Street over and across the south line of "HAMPTON SQUARE SECOND ADDITION," are hereby granted to the appropriate governing body, as indicated hereon.

Reserves "A", "B", and "C" are platted for landscaping, irrigation, berming, monuments, signs, and utilities confined by easement(s) or rights-of-way. The Reserves shall be owned and maintained by the owner(s)/developer, and/or their successors, assigns, and/or a Lot Owner's Association.

A drainage plan has been developed for this plat. All drainage easements, right-of-way, or reserves shall remain at established grades or as modified with the approval of the applicable City or County Engineer, and unobstructed to allow for the conveyance of storm water.

This plat shall conform to the recitals of Community Unit Plan DP-262.

Hampton Square, LLC, a Kansas limited liability company

Marvin L. Schellenberg, manager
Hampton Square LLC, a Kansas limited liability company

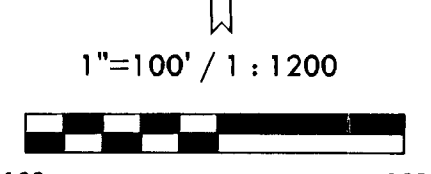
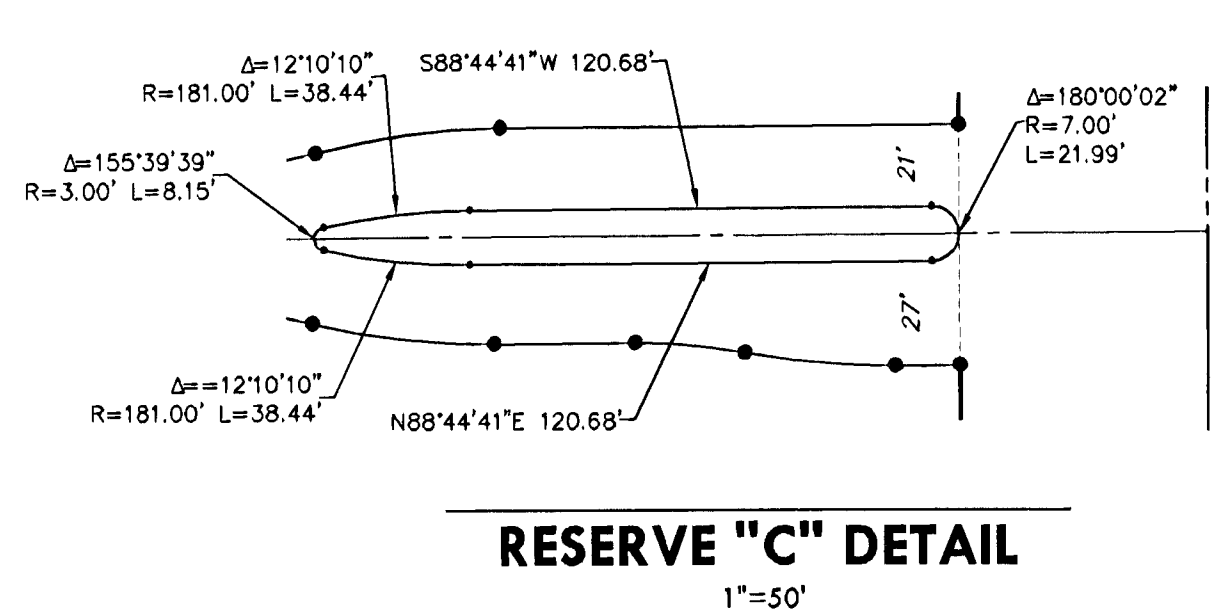
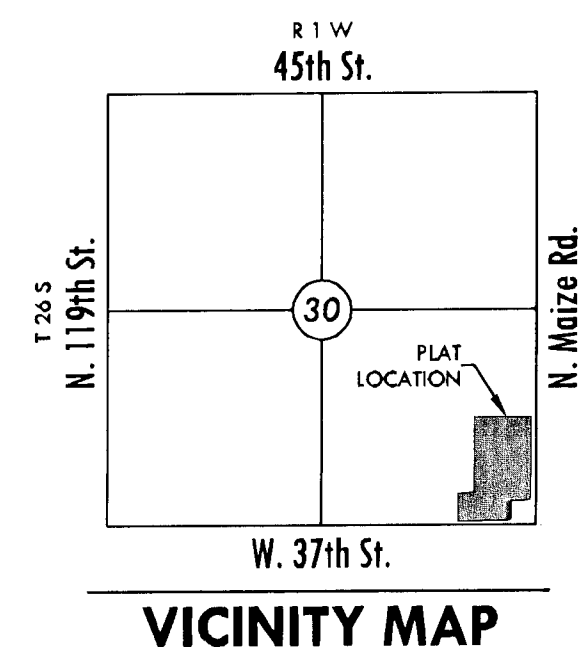
STATE OF KANSAS, SEDGWICK COUNTY) ss:

This instrument was acknowledged before me on ___ day of _____, 2011, by Marvin L. Schellenberg, manager of Hampton Square LLC, a Kansas limited liability company.

IN WITNESS WHEREOF, I have hereunto set my hand and affixed my official seal, the day and year last above written.

Notary Public: _____
My Term Expires: _____

MINIMUM PAD ELEVATIONS LOWEST OPENINGS		
LOTS (inclusive)	BLOCK	ELEVATION NAVD88
1 - 7	3	1360.1

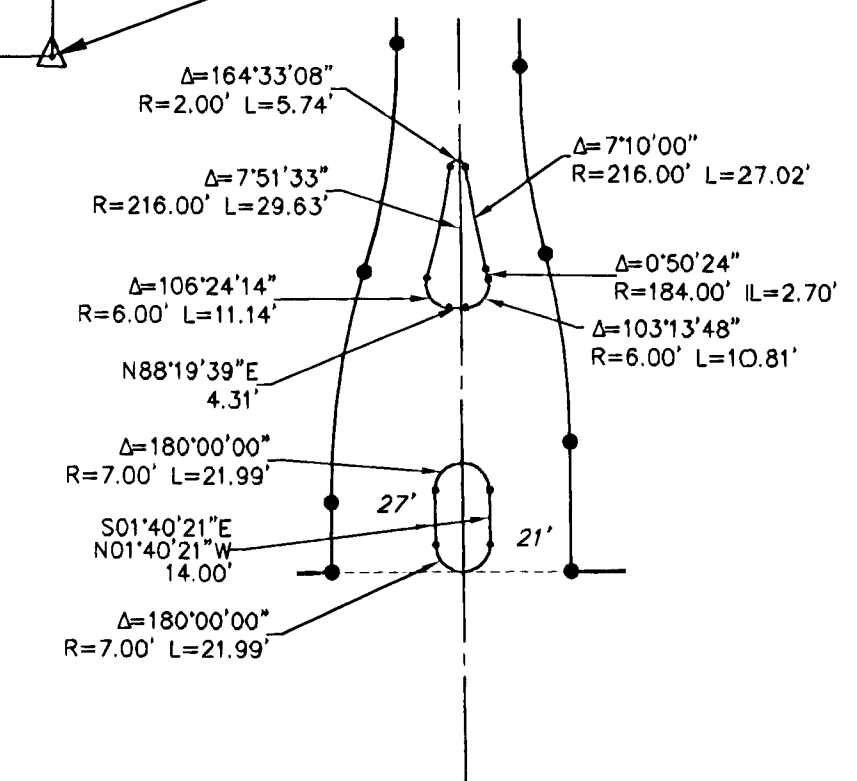


Basis of Bearing: Kansas coordinate system of 1983 south zone grid bearing of N00°15'19"W along the E. line of the SE 1/4, Sec. 30, T26S, R1W, 6th P.M.

This plat is surveyed and platted on NAD88 using Kansas state plane south zone coordinates, modified to the surface, having a combined adjustment scale factor of 1.000120014401728

RESERVES "A" & "B" DETAIL

1"=50'



LEGEND

Date of Survey: April 8th, 2011

- △ = Section corner monument found
- = Found 3/8" rebar w/ MKEC CLS 39 id. cap unless otherwise annotated
- = Set 3/8" rebar w/ MKEC CLS 39 id. cap
- (M) = Measured
- (CM) = Calculated from measured
- (P) = Platted

PLANNING COMMISSION CERTIFICATE

This plat of "HAMPTON SQUARE SECOND ADDITION" has been submitted to and approved by the Wichita-Sedgwick County Metropolitan Area Planning Commission, Wichita, Kansas.

Dated this ___ day of _____, 2011

WICHITA-SEDGWICK COUNTY METROPOLITAN AREA PLANNING COMMISSION

_____, Chair
Debra Miller Stevens, Chair

Attest: _____, Secretary
John L. Schlegel, Secretary

GOVERNING BODY CERTIFICATE

The dedications shown on this plat are hereby accepted and this plat is hereby approved by the governing body of the City of Wichita, Kansas.

Dated this ___ day of _____, 2011

At the direction of the City Council.

_____, Mayor
Carl Brewer, Mayor

Attest: _____, City Clerk
Karan Sublett, City Clerk

TRANSFER RECORD

STATE OF KANSAS, SEDGWICK COUNTY) ss:

Entered on transfer record this ___ day of _____, 2011

_____, County Clerk
Kelly B. Arnold, County Clerk

REGISTER OF DEEDS CERTIFICATE

STATE OF KANSAS, SEDGWICK COUNTY) ss:

This is to certify that this instrument was filed for record in the Register of Deeds office this ___ day of _____, 2011, at _____ o'clock ___ M; and is duly recorded.

_____, Register of Deeds
Bill Meek, Register of Deeds

Attest: _____, Deputy
Tonya E. Buckingham, Deputy

COUNTY SURVEYOR

STATE OF KANSAS, SEDGWICK COUNTY) ss:

Reviewed in accordance with K.S.A. 58-2005 on this ___ day of _____, 2011.

_____, Deputy County Surveyor
Tricia L. Robello, LS #1246
Deputy County Surveyor
Sedgwick County, Kansas



411 N. WEBB ROAD
WICHITA, K.S. 67206
316-684-3600

A:\Projects\2010\0010\002 - Hampton Square 2nd\LS-CofD\Plat\LS08.plt 4/7/2011 8:58:58 AM CT