

MURDOCK AVE.

# LAMPTON BROTHERS 2ND ADDITION

FIN REC'D Wichita, Sedgwick County, Kansas

State of Kansas) SS FINAL TRACING REC'D 1/12  
Sedgwick County)

State of Kansas) SS  
Sedgwick County)

We, Ruggles & Bohm, P.A., Land Surveyors in aforesaid county and state, do hereby certify that, under the supervision of the undersigned, we have surveyed and platted "LAMPTON BROTHERS 2ND ADDITION", an Addition to Wichita, Sedgwick County, Kansas, and that the accompanying plat is a true and correct exhibit of the property surveyed, described as follows:

The foregoing instrument acknowledged before me, this 10th day of January, 2012, by Douglas Lampton, President/CEO, on behalf of Lampton Brothers Investments, Inc. Notary Public

Lot 1, Block 1, AND Reserve A, Lampton Brothers Addition, an Addition to Wichita, Sedgwick County, Kansas.

My appointment expires May 20, 2015

Lots 1, 3, 5, 7, 9, 11, 13, 15, 17 and 19 on Dover, now Mosley, Throckmorton's Addition to Wichita, Sedgwick County, Kansas.

This plat of "LAMPTON BROTHERS 2ND ADDITION", an Addition to Wichita, Sedgwick County, Kansas, has been submitted to and approved by the Wichita-Sedgwick County Metropolitan Area Planning Commission, Wichita, Kansas.

Lot 14 on Cannon Street, now Mead Avenue, lying south of the right-of-way of the south arm of the "Y" (Wye) of the St. Louis and San Francisco Railroad as now located, in Hiltons Addition to Hiltons Addition to Wichita, Sedgwick County, Kansas.

Dated this \_\_\_ day of \_\_\_, 2012.

Wichita-Sedgwick County Metropolitan Area Planning Commission

Shawn Farney Chair

John L. Schlegel Secretary

This plat approved and all dedications shown hereon accepted by the City Council of the City of Wichita, Kansas, this \_\_\_ day of \_\_\_, 2012.

At the Direction of the City Council

Carl Brewer Mayor

Karen Sublett City Clerk

Reviewed in accordance with K.S.A. 58-2005 on this \_\_\_ day of \_\_\_, 2012.

Deputy County Surveyor  
Tricia L. Robello, LS #1246

Entered on transfer record this \_\_\_ day of \_\_\_, 2012.

Kelly B. Arnold County Clerk

State of Kansas) SS  
Sedgwick County)

This is to certify that this plat has been filed for record in the office of the Register of Deeds, this \_\_\_ day of \_\_\_, 2012, at

\_\_\_ o'clock \_\_\_ M, and is duly recorded.

Bill Meek Register of Deeds

Tonya Buckingham Deputy

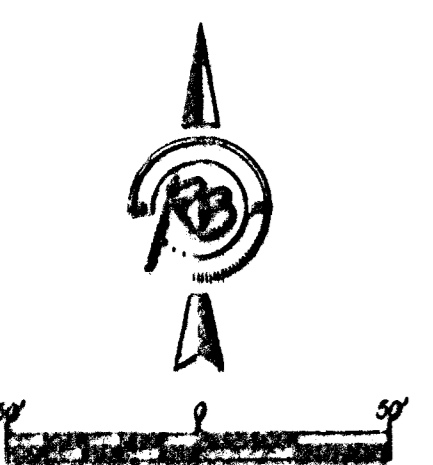
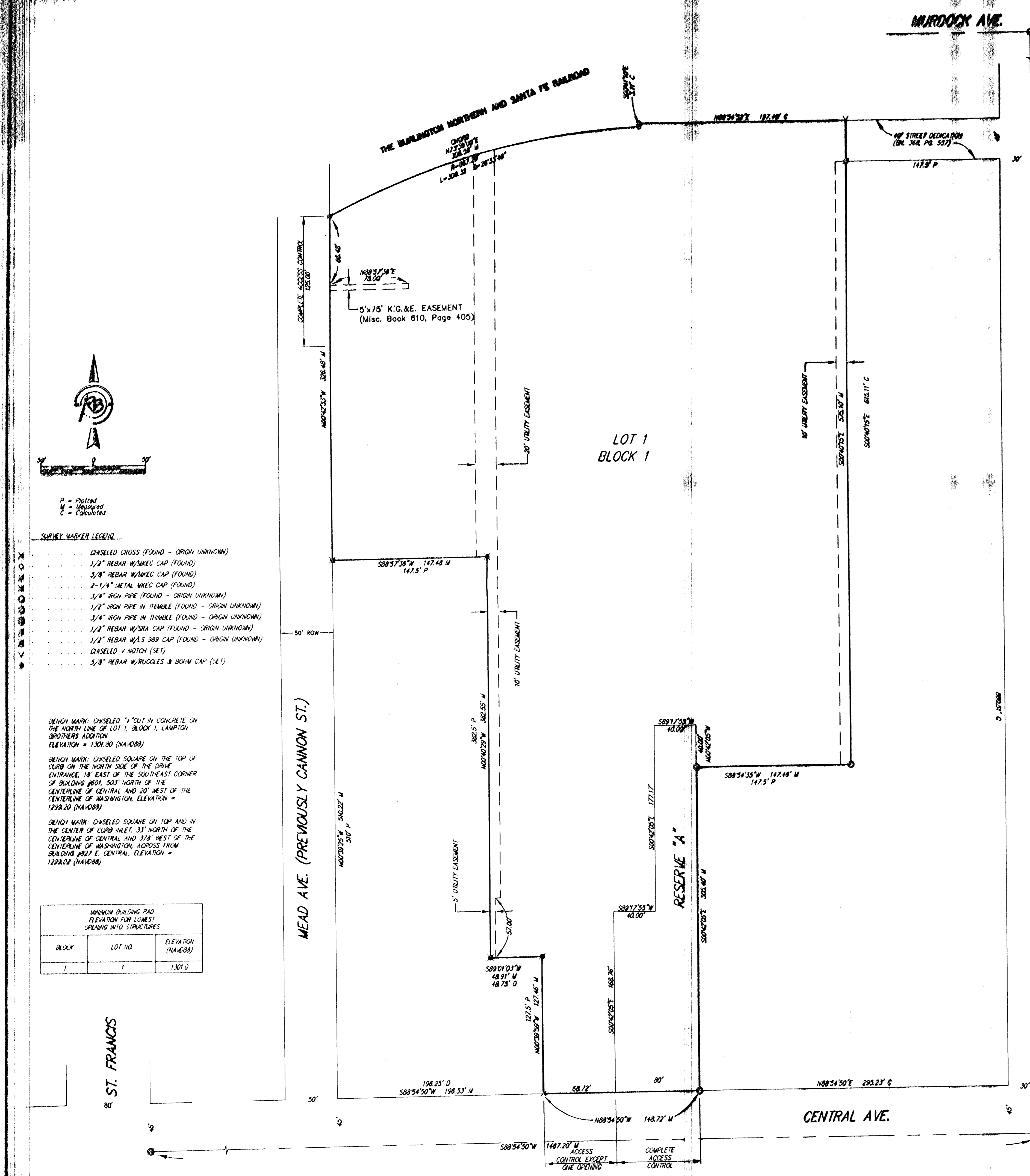
All public easements and dedications are hereby vacated by virtue of K.S.A. 12-512b.

Ruggles & Bohm, P.A.  
Land Surveyor  
William K. Clevenger

Know all men by these presents that we, the undersigned, have caused the land described in the surveyor's certificate to be platted into a Lot, a Block, and a Reserve, to be known as "LAMPTON BROTHERS 2ND ADDITION", an Addition to Wichita, Sedgwick County, Kansas. The utility easements are hereby granted for the construction and maintenance of all public utilities. The drainage easement is hereby granted to the public as indicated for drainage purposes. Access Controls as indicated are hereby granted to the appropriate governing body. Reserve "A" is hereby reserved for irrigation, landscaping, berms, ponds, drainage, drainage structures, and utilities confined to easements. A drainage plan has been developed for this plat and all drainage easements shall remain at established grades, or as modified with the approval of the City Engineer, and unobstructed to allow for the conveyance of stormwater.

Lampton Brothers Investment, Inc.  
Douglas Lampton President/CEO

SOUTHEAST CORNER OF THE SW1/4 OF SEC. 16, T27S, R1E



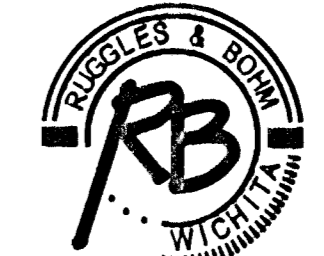
- SURVEY MARKER LEGEND**
- ..... CHISELED CROSS (FOUND - ORIGIN UNKNOWN)
  - ..... 1/2" REBAR W/NECK CAP (FOUND)
  - ..... 3/8" REBAR W/NECK CAP (FOUND)
  - ..... 2-1/4" METAL W/NECK CAP (FOUND)
  - ..... 1/4" IRON PIPE (FOUND - ORIGIN UNKNOWN)
  - ..... 1/2" IRON PIPE IN THUMB (FOUND - ORIGIN UNKNOWN)
  - ..... 3/4" IRON PIPE IN THUMB (FOUND - ORIGIN UNKNOWN)
  - ..... 1/2" REBAR W/SRA CAP (FOUND - ORIGIN UNKNOWN)
  - ..... 1/2" REBAR W/AS 389 CAP (FOUND - ORIGIN UNKNOWN)
  - ..... CHISELED V NOTCH (SET)
  - ..... 3/8" REBAR W/RUGGLES & BOHM CAP (SET)

BENCH MARK: CHISELED "X" OUT IN CONCRETE ON THE NORTH LINE OF LOT 1, BLOCK 1, LAMPTON BROTHERS ADDITION. ELEVATION = 1301.80 (NAVD88)

BENCH MARK: CHISELED SQUARE ON THE TOP OF CURB ON THE NORTH SIDE OF THE DRIVE ENTRANCE, 18' EAST OF THE SOUTHWEST CORNER OF BUILDING #601, 503' NORTH OF THE CENTERLINE OF CENTRAL AND 20' WEST OF THE CENTERLINE OF WASHINGTON. ELEVATION = 1298.20 (NAVD88)

BENCH MARK: CHISELED SQUARE ON TOP AND IN THE CENTER OF CURB INLET, 33' NORTH OF THE CENTERLINE OF CENTRAL AND 318' WEST OF THE CENTERLINE OF WASHINGTON. ACROSS FROM BUILDING #627 E. CENTRAL. ELEVATION = 1298.02 (NAVD88)

BLOCK	LOT NO.	ELEVATION (NAVD88)
1	1	1301.0



Ruggles & Bohm, P.A.  
Engineering, Surveying, Land Planning  
924 North Main (316) 264-8008  
Wichita, Kansas 67203 (316) 264-4621 fax  
www.rbkansas.com E-mail: info@rbkansas.com

DWG FILE: SURVEY BASE PROJECT NO. 3686P JANUARY 10, 2012