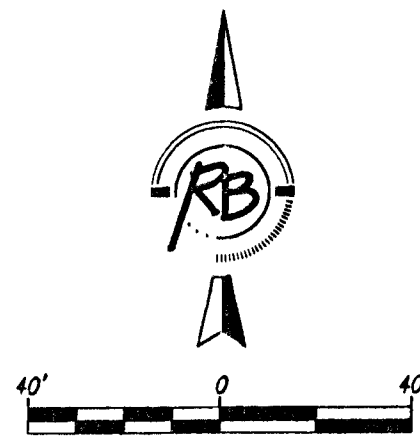
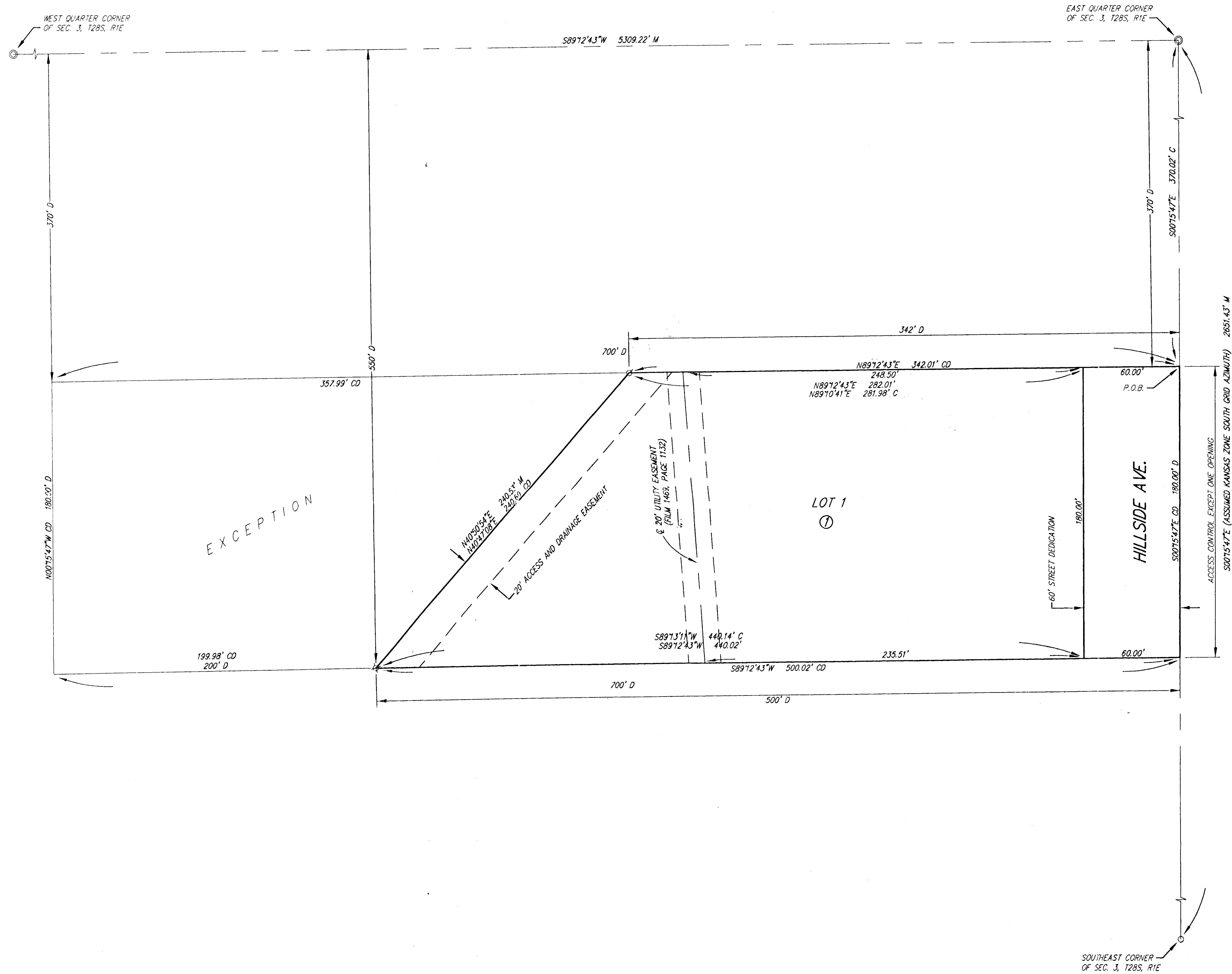


# One - Step Final Plat

## LORDS DINER, S. HILLSIDE

an Addition to Wichita, Sedgwick County, Kansas



BENCH MARK: CHISELED SQUARE ON THE TOP OF CURB ON THE WEST SIDE OF OLIVER AVE. AT THE NORTH LINE OF LOT 1, BLOCK 1, LORDS DINER, S. OLIVER. ELEVATION = 1291.17 (NAVD88)

MINIMUM PAD ELEVATION FOR LOWEST OPENING = 1289.0 (NAVD88)

- M = Measured  
 C = Calculated  
 D = Described  
 CD = Calculated from Described
- SURVEY MARKER LEGEND**
- ..... 1/2" IRON PIPE IN THIMBLE (FOUND - ORIGIN UNKNOWN)
  - ⊙ ..... 3/4" IRON PIPE IN THIMBLE (FOUND - ORIGIN UNKNOWN)
  - ⊗ ..... 1/2" REBAR W/BLS CAP (FOUND)
  - ⊗ ..... 1" BAR (FOUND - ORIGIN UNKNOWN)
  - ..... 5/8" REBAR W/CAP (SET)

State of Kansas)  
 SS  
 Sedgwick County)

We, Ruggles & Bohm, P.A., Land Surveyors in aforesaid county and state, do hereby certify that, under the supervision of the undersigned, we have surveyed and platted "LORDS DINER, S. HILLSIDE", an Addition to Wichita, Sedgwick County, Kansas, and that the accompanying plat is a true and correct exhibit of the property surveyed, described as follows:

A tract beginning at a point 370 feet south of the Northeast corner of the SE1/4 of Sec. 3, T28S, R1E of the 6th P.M., Sedgwick County, Kansas; thence West, 700 feet to a point 370 feet south of the north line of said SE1/4 of Sec. 3; thence South, 180 feet; thence East, 700 feet; thence North, 180 feet to the place of beginning; EXCEPT beginning 370 feet south and 342 feet west of the Northeast corner of said SE1/4; thence southwesterly to a point 550 feet south and 500 feet west of said Northeast corner; thence West, 200 feet; thence North, 180 feet to a point 370 feet south and 700 feet west of said Northeast corner; thence East to the point of beginning.

All public easements and dedications are hereby vacated by virtue of K.S.A. 12-512(b).

Ruggles & Bohm, P.A.  
 \_\_\_\_\_ Land Surveyor  
 William K. Clevenger

Know all men by these presents that we, the undersigned, have caused the land described in the surveyor's certificate to be platted into a Lot, a Block and a Street, to be known as "LORDS DINER, S. HILLSIDE", an Addition to Wichita, Sedgwick County, Kansas. Access Controls as indicated are hereby granted to the appropriate governing body. The street is hereby dedicated to and for the use of the public. A drainage plan has been developed for this plat and all drainage easements shall remain at established grades, or as modified with the approval of the City Engineer, and unobstructed to allow for the conveyance of storm water.

Catholic Diocese of Wichita  
 \_\_\_\_\_ President  
 Michael O. Jackels

State of Kansas)  
 SS  
 Sedgwick County)

The foregoing instrument acknowledged before me, this \_\_\_\_\_ day of \_\_\_\_\_, 2011, by Michael O. Jackels, President, on behalf of Catholic Diocese of Wichita.

\_\_\_\_\_  
 Notary Public

My appointment expires \_\_\_\_\_.

This plat of "LORDS DINER, S. HILLSIDE", an Addition to Wichita, Sedgwick County, Kansas, has been submitted to and approved by the Wichita-Sedgwick County Metropolitan Area Planning Commission, Wichita, Kansas.

Dated this \_\_\_\_\_ day of \_\_\_\_\_, 2011.

Wichita-Sedgwick County Metropolitan Area Planning Commission

\_\_\_\_\_  
 Chair  
 Debra Miller Stevens

\_\_\_\_\_  
 Secretary  
 John L. Schlegel

This plat approved and all dedications shown hereon accepted by the City Council of the City of Wichita, Kansas, this \_\_\_\_\_ day of \_\_\_\_\_, 2011.

At the Direction of the City Council

\_\_\_\_\_  
 Mayor  
 Carl Brewer

\_\_\_\_\_  
 City Clerk  
 Karen Sublett

Reviewed in accordance with K.S.A. 58-2005 on this \_\_\_\_\_ day of \_\_\_\_\_, 2011.

\_\_\_\_\_  
 Deputy County Surveyor  
 Tricia L. Robello, LS #1246

Entered on transfer record this \_\_\_\_\_ day of \_\_\_\_\_, 2011.

\_\_\_\_\_  
 County Clerk  
 Kelly B. Arnold

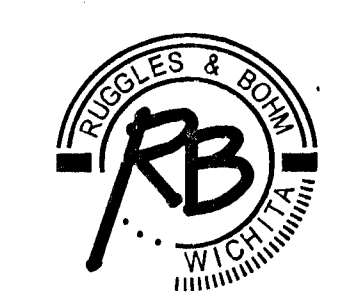
State of Kansas)  
 SS  
 Sedgwick County)

This is to certify that this plat has been filed for record in the office of the Register of Deeds, this \_\_\_\_\_ day of \_\_\_\_\_, 2011, at \_\_\_\_\_ o'clock \_\_ M, and is duly recorded.

\_\_\_\_\_  
 Register of Deeds  
 Bill Meek

\_\_\_\_\_  
 Deputy  
 Tonya Buckingham

DWG FILE: SURVEY BASE  
 PROJECT NO. 3807P  
 MAY 18, 2011



**Ruggles & Bohm, P.A.**  
 Engineering, Surveying, Land Planning

924 North Main (316) 264-8008  
 Wichita, Kansas 67203 (316) 264-4621 fax  
 www.rbkansas.com E-mail: info@rbkansas.com