

**NOTES**

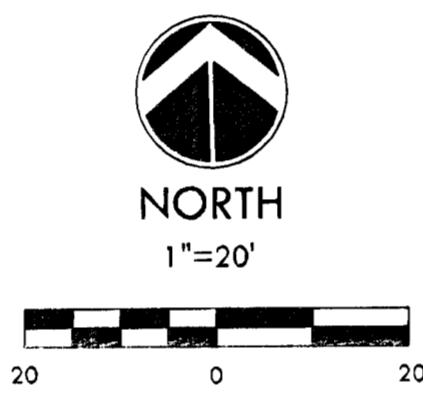
1. LOCATION: Located in north Wichita three-quarters of a mile south of 53rd St N just west of Meridian Ave in a residential neighborhood. Single family residential is the only existing adjoining land use.
2. LOT TOTAL - 1
3. ANNEXATION: City of Wichita
4. EXISTING/PROPOSED USES: existing - open space reserve  
proposed - single-family residential
5. ZONING: Existing - "SF-5" Single-Family Residential with CUP DP-78 (Including all surrounding lots)
6. PLAT AREA: Gross = 0.28 acres
7. SURVEY DATE: December, 2010 (by MKEC)
8. UTILITIES: Municipal water and sanitary sewer is available. All utilities shown are per plans, locates shall be performed prior to excavation.
9. ACCESS / ACCESS CONTROLS: None
10. RESERVES: None
11. FLOOD: According to FEMA FIRM Community Unit Panel 20173C0213E, effective date February 2nd, 2007; this property lies within flood zone "X", "Areas determined to be outside the 0.2% annual chance floodplain."
12. DRAINAGE: A drainage report shall accompany this plat and will be submitted to the Public Works Department.
13. BUILDING SETBACK: As per CUP DP-78/ "SF-5" zoning

**LEGAL DESCRIPTION**

Reserve B, Moorings Addition, Wichita, Sedgwick County, Kansas.

**LEGEND**

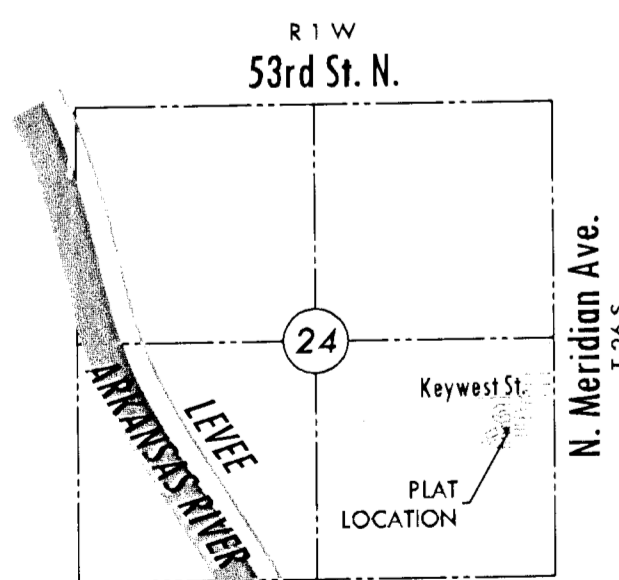
- |  |                          |  |                                 |
|--|--------------------------|--|---------------------------------|
|  | - EDGE OF TREES          |  | - BENCHMARK                     |
|  | - CONIFEROUS TREE        |  | - PROPERTY CORNER FOUND         |
|  | - DECIDUOUS TREE         |  | - SECTION CORNER                |
|  | - SIGN                   |  | - EASEMENT                      |
|  | - POWER POLE             |  | - FENCE                         |
|  | - ELECTRIC BOX           |  | - STORM SEWER PIPE              |
|  | - LIGHT POLE             |  | - WATER LINE                    |
|  | - FIRE HYDRANT           |  | - SANITARY SEWER LINE           |
|  | - WATER VALVE            |  | - GAS LINE                      |
|  | - WATER METER            |  | - TELEPHONE LINE                |
|  | - STORM WATER MANHOLE    |  | - UNDERGROUND ELECTRIC LINE     |
|  | - SANITARY SEWER MANHOLE |  | - OVERHEAD TELEPHONE            |
|  | - TELEPHONE MANHOLE      |  | - OVERHEAD ELECTRIC             |
|  | - TELEPHONE RISER        |  | - UNDERGROUND FIBER OPTIC CABLE |
|  | - INLET                  |  |                                 |
|  | - GRATE INLET            |  |                                 |
|  | - GAS METER              |  |                                 |



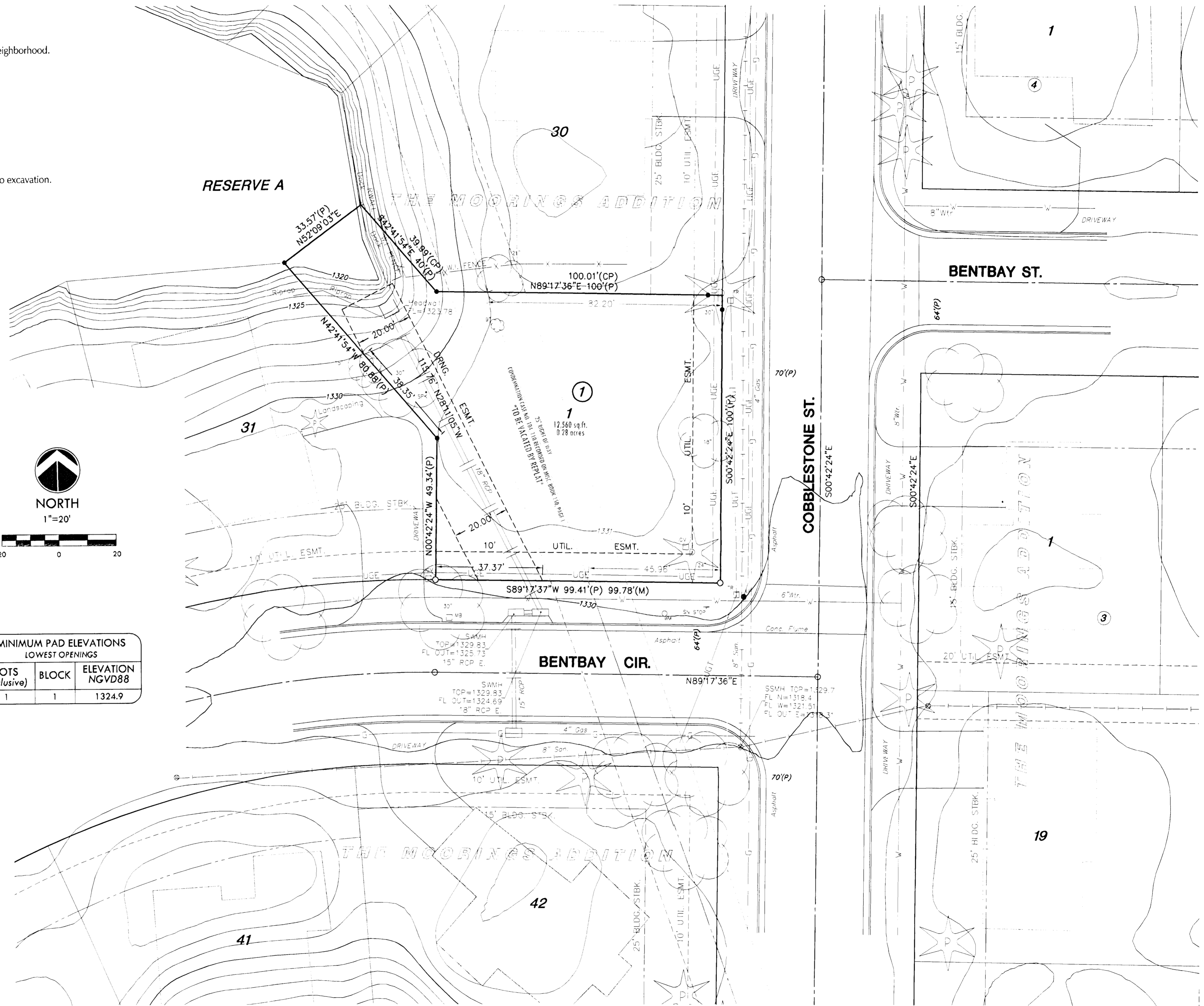
MINIMUM PAD ELEVATIONS LOWEST OPENINGS		
LOTS (inclusive)	BLOCK	ELEVATION NGVD88
1	1	1324.9

**BENCH MARK**

BM USGS USGS gauging station top wall at southeast corner bridge 53rd and Arkansas River; being 29 feet south and 146 feet east of NW. corner of the NW. corner of Sec. 24, T26S, R1W line of Section  
Elev.=1353.025 (NAVD 29)



**VICINITY MAP**



**ONE STEP FINAL PLAT**

A replat of Reserve B, The Moorings Addition, lying in a portion of the SE. 1/4, Sec. 24, T26S, R1W, 6th P.M.

**MOORINGS ADDITION REPLAT RESERVE B**

OWNER/DEVELOPER: The Moorings Home Owners Association, Attn: Richard W. Hula

2819 W Milro Cir, Wichita, KS 67204 (316)831-9520

Date submitted: Dec. 27th, 2010  
Subdivision Hearing: Jan. 13th, 2011

**MAPC Hearing: Jan. 20th, 2011**

**MKEC**  
ENGINEERING  
CONSULTANTS, INC.

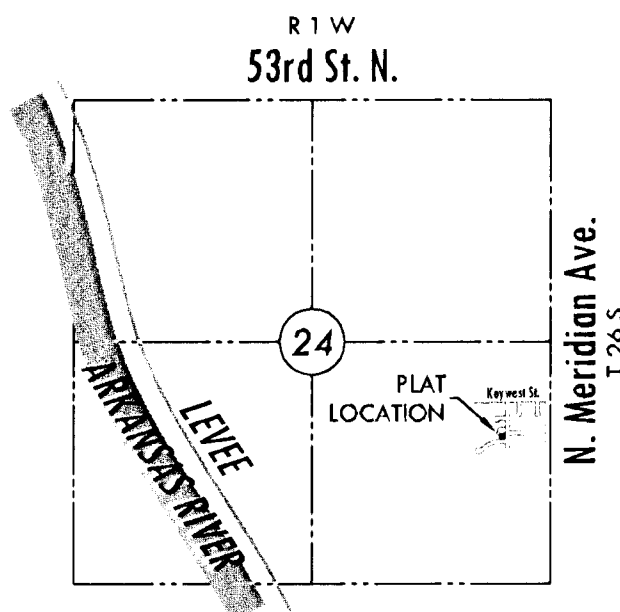
411 N. WEBB ROAD  
WICHITA, KS. 67206  
316-684-9600

J:\DW\10275 - Moorings Reserve B\Map\10275.dwg 12/13/2010 10:13 AM CST

# FINAL PLAT

## MOORINGS ADDITION REPLAT RESERVE B

### AN ADDITION TO WICHITA, SEDGWICK COUNTY, KANSAS



#### VICINITY MAP

#### CERTIFICATE OF SURVEY

I, Gregory J. Allison, a registered land surveyor in Kansas, do hereby certify that I have been in responsible charge of surveying and platting of "MOORINGS ADDITION REPLAT RESERVE B," an addition to Wichita, Sedgwick County, Kansas, into a Lot, and a Block, the same being accurately set forth in the accompanying plat and described herein:

A replat of Reserve B, The Moorings, Wichita, Sedgwick County, Kansas.

All easements, right-of-way, setbacks, reserves, together with that portion of Condemnation Case No. 104, 110 recorded on Misc. Book 150, Page 1, together with any and all other public dedications within the above described property are hereby vacated and replatted by virtue of K.S.A. 12-512(b).

I hereby certify that the details of this plat are correct to the best of my knowledge and belief this \_\_\_ day of \_\_\_\_\_, 2011.

Gregory J. Allison, PE, LS #1257  
MKEC Engineering Consultants, Inc.  
411 North Webb Road  
Wichita, Kansas 67206

#### OWNER'S CERTIFICATES

Know all men by these presents that we the undersigned property owners of the land above set forth in the Registered Land Surveyor's Certificate, have caused the same to be surveyed and platted into a Lot, and a Block, the same to be known as "MOORINGS ADDITION REPLAT RESERVE B," an addition to Wichita, Sedgwick County, Kansas.

Easements for the construction and maintenance of public utilities and drainage, as indicated on the accompanying plat are hereby granted to the public.

A drainage plan has been developed for this plat. All drainage easements, right-of-way, or reserves shall remain at established grades or as modified with the approval of the applicable City or County Engineer, and unobstructed to allow for the conveyance of storm water.

The Moorings Home Owners Association, a Kansas not for profit corporation

\_\_\_\_\_, President  
Richard W. Hula, President

STATE OF KANSAS, SEDGWICK COUNTY} ss:

This instrument was acknowledged before me on \_\_\_ day of \_\_\_\_\_, 2011, by Richard W. Hula, President, The Moorings Home Owners Association, a Kansas not for profit corporation.

IN WITNESS WHEREOF, I have hereunto set my hand and affixed my official seal, the day and year last above written.

\_\_\_\_\_, Notary Public

Notary Public:

My Term Expires: \_\_\_\_\_

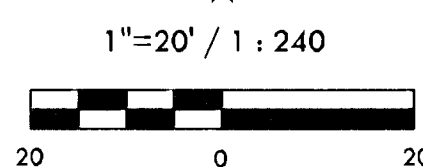
#### LEGEND

Date of Survey: Dec., 2011

- = Found survey monument see annotation for type
- = Set ½" rebar w/ MKEC CLS 39 id. cap unless otherwise noted
- (M) = Measured
- (CP) = Calculated from platted
- (P) = Platted

Basis of Bearing: Kansas coordinate system of 1983 south zone grid bearing of S00°42'24"E along the E. line of SE ¼, Sec. 24, T26S, R1W, 6th P.M., AND ALSO, the east line Lot 1, Block 1

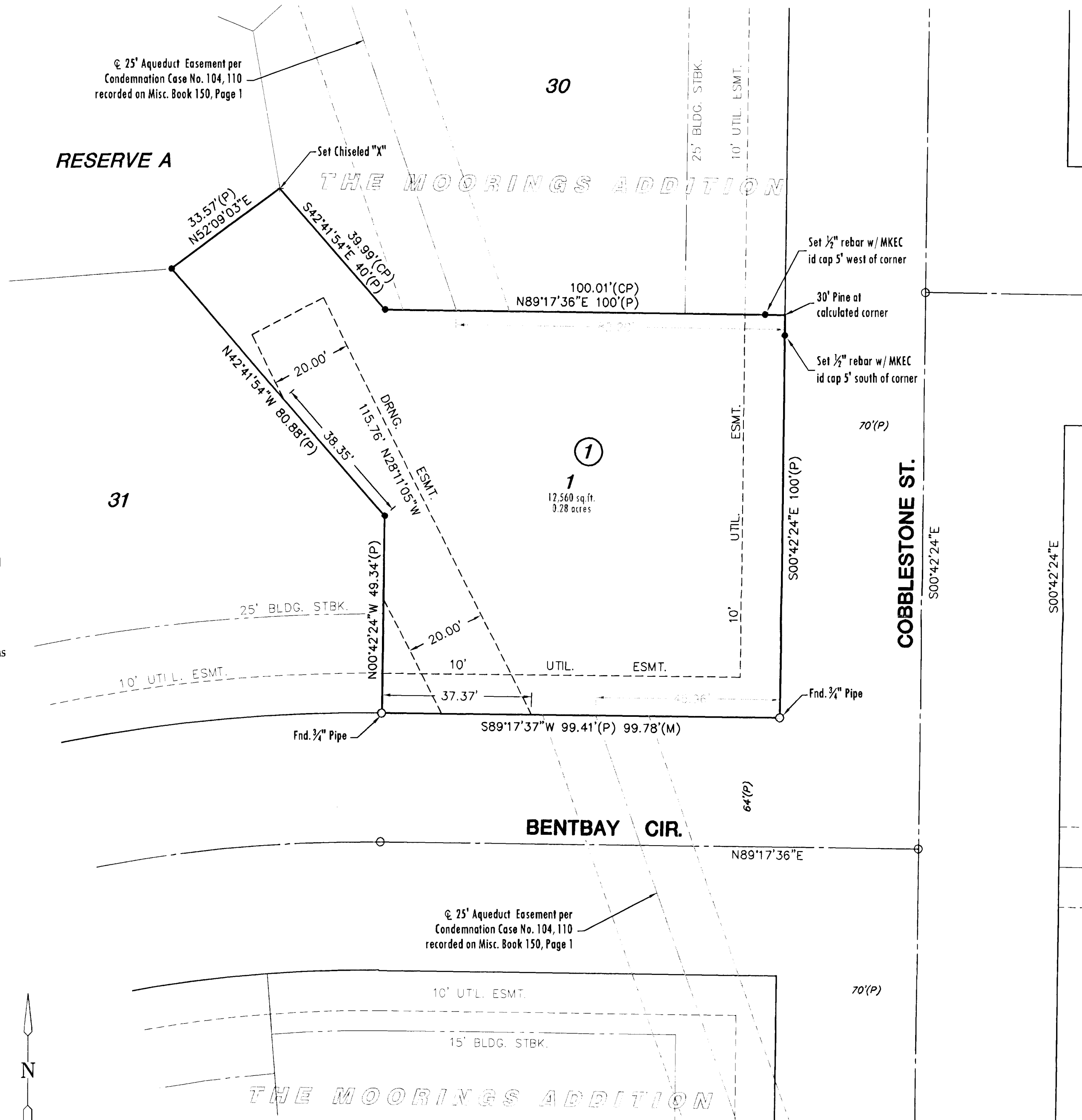
This plat is surveyed and platted on NAD88-09 using Kansas state plane south zone coordinates, modified to the surface, having a combined adjustment scale factor of 1.000120014401728



#### BENCH MARK

- BM USGS USGS gauging station top wall at southeast corner bridge 53rd and Arkansas River; being 29 feet south and 146 feet east of NW. corner of the NW. corner of Sec. 24, T26S, R1W line of Section Elev.=1353.525 (NGVD88)
- BM #1 City of Wichita disc NW. corner of Meridian and Keywest. Elev.=1329.86 (NGVD88)

MINIMUM PAD ELEVATIONS LOWEST OPENINGS		
LOT	BLOCK	ELEVATION NGVD88
1	1	1324.9



#### PLANNING COMMISSION CERTIFICATE

This plat of "MOORINGS ADDITION REPLAT RESERVE B" has been submitted to and approved by the Wichita-Sedgwick County Metropolitan Area Planning Commission, Wichita, Kansas.

Dated this \_\_\_ day of \_\_\_\_\_, 2011

WICHITA-SEDGWICK COUNTY METROPOLITAN AREA PLANNING COMMISSION

\_\_\_\_\_, Chair  
Debra Miller Stevens, Chair

Attest: \_\_\_\_\_, Secretary  
John L. Schlegel, Secretary

#### GOVERNING BODY CERTIFICATE

The dedications shown on this plat are hereby accepted and this plat is hereby approved by the governing body of the City of Wichita, Kansas.

Dated this \_\_\_ day of \_\_\_\_\_, 2011

At the direction of the City Council.

\_\_\_\_\_, Mayor  
Carl Brewer, Mayor

Attest: \_\_\_\_\_, City Clerk  
Karen Sublett, City Clerk

#### TRANSFER RECORD

STATE OF KANSAS, SEDGWICK COUNTY} ss:

Entered on transfer record this \_\_\_ day of \_\_\_\_\_, 2011

\_\_\_\_\_, County Clerk  
Kelly B. Arnold, County Clerk

#### REGISTER OF DEEDS CERTIFICATE

STATE OF KANSAS, SEDGWICK COUNTY} ss:

This is to certify that this instrument was filed for record in the Register of Deeds office this \_\_\_ day of \_\_\_\_\_, 2011, at \_\_\_\_\_ o'clock \_M; and is duly recorded.

\_\_\_\_\_, Register of Deeds  
Bill Meek, Register of Deeds

Attest: \_\_\_\_\_, Deputy  
Tonya E. Buckingham, Deputy

#### COUNTY SURVEYOR

STATE OF KANSAS, SEDGWICK COUNTY} ss:

Reviewed in accordance with K.S.A. 58-2005 on this \_\_\_ day of \_\_\_\_\_, 2011.

\_\_\_\_\_, Deputy County Surveyor  
Tricia L. Robello, LS #1246  
Deputy County Surveyor  
Sedgwick County, Kansas

**MKEC**  
ENGINEERING  
CONSULTANTS, INC.

411 N. WEBB ROAD  
WICHITA, K.S. 67206  
316-684-9600