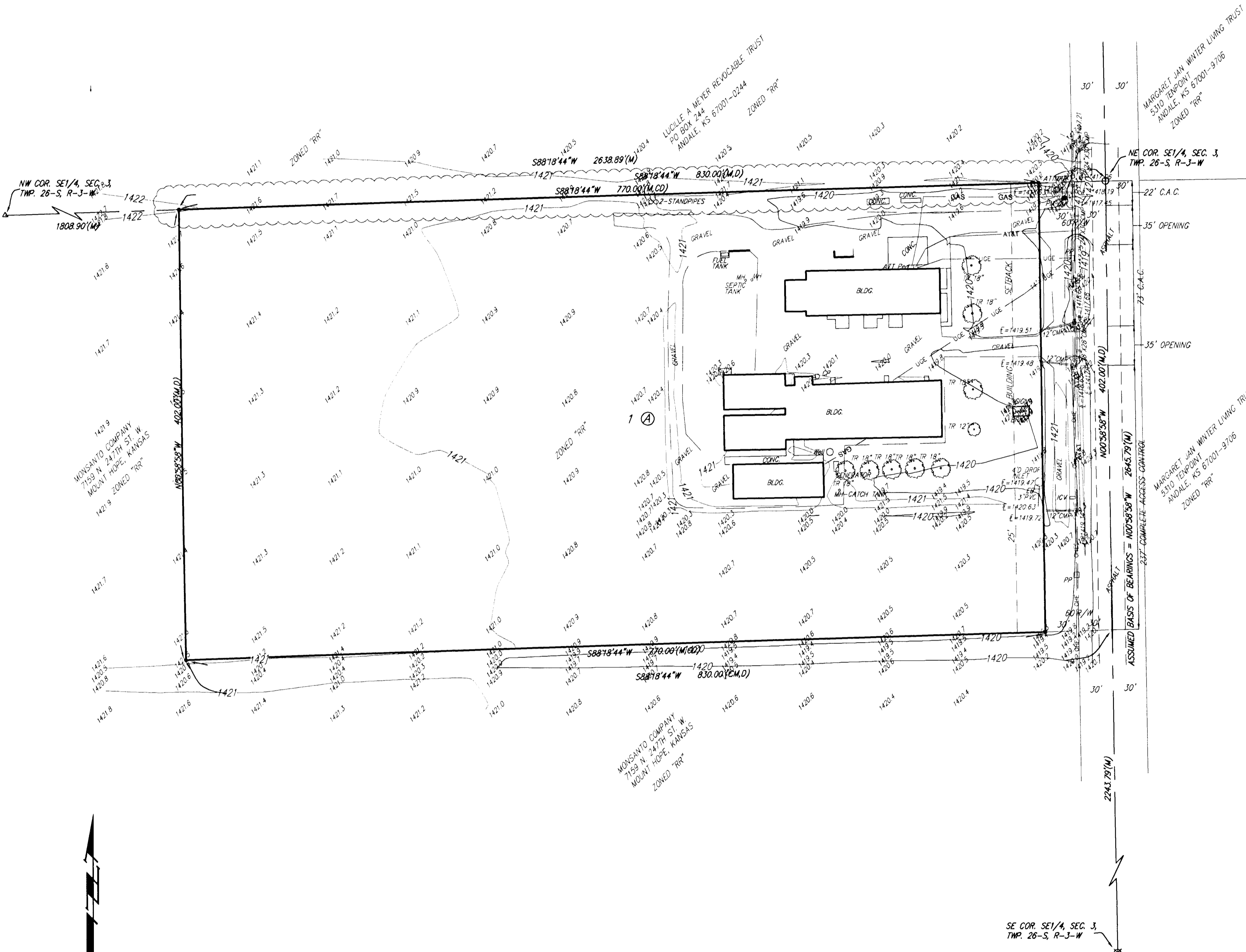


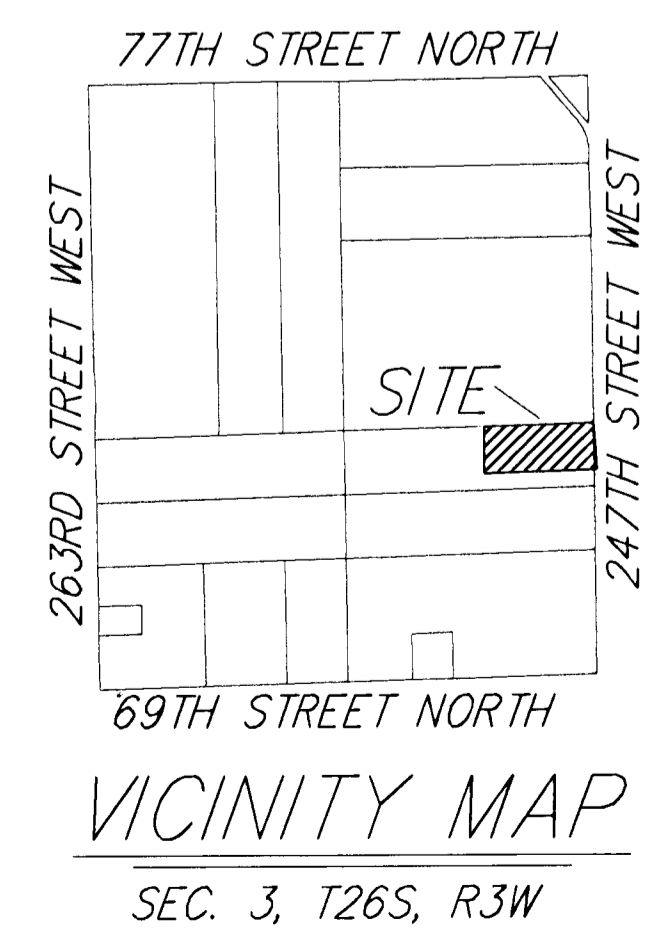
ONE-STEP FINAL PLAT

MONSANTO 2ND ADDITION

SEDGWICK COUNTY, KANSAS



- 0 60 120
- DATE OF PREPARATION: 19 JANUARY 2011
DATE OF TOPOGRAPHY: 28 DECEMBER 2011
CONTOUR INTERVALS = 1 FOOT
- C.A.C. = COMPLETE ACCESS CONTROL
- DD □ = Cleanout
 - DP □ = Cable TV Pedestal
 - EB □ = Electric Box
 - GM ● = Gas Meter
 - ICV □ = Irrigation Control Valve - Valve Box
 - PM □ = Pipeline Marker
 - ATMWR □ = ATT Marker
 - PP □ = Power Pole
 - SP □ = Stand Pipe
 - ATT Ped □ = ATT Pedestal
 - T ○ = Tree
 - Mel ○ = Cased Well
- BENCHMARK
NE CORNER BRICK WALL AROUND
"MONSANTO" SIGN
ELEVATION = 1421.56 NGVD88
- = #4 REBAR W/ "BAUGHMAN" CAP (SET)
 - ⊗ = 1" IRON (FOUND)
 - = 1/2" IRON (FOUND)
 - △ = STONE (FOUND)
 - (M) = MEASURED
 - (D) = DESCRIBED



State of Kansas) SS
Sedgwick County) We, Baughman Company, P.A., Surveyors in aforesaid county and state do hereby certify that we have surveyed and platted "MONSANTO 2ND ADDITION", Sedgwick County, Kansas and that the accompanying plat is a true and correct exhibit of the property surveyed, described as that part of the Southeast Quarter of Section 3, Township 26 South, Range 3 West of the 6th Principal Meridian, Sedgwick County, Kansas described as follows: Beginning at the Northeast corner of said Southeast Quarter; thence south along the east line of said Southeast Quarter, 402 feet; thence west parallel with the north line of said Southeast Quarter, 830 feet; thence north parallel with the east line of said Southeast Quarter, 402 feet to a point on the north line of said Southeast Quarter; thence east along said north line, 830 feet to the point of beginning, subject to road rights-of-way of record.

Existing public easements and dedications being vacated by virtue of K.S.A. 12-512(b).
Baughman Company, P.A.
Michael G. Conrey, Surveyor

Know all men by these presents that we, the undersigned, have caused the land in the surveyors certificate to be platted into a Lot, a Block, and Street, to be known as "MONSANTO 2ND ADDITION", Sedgwick County, Kansas. The streets are hereby dedicated to and for the use of the public. Access controls shall be as depicted on the face of the plat and are hereby granted to the City of Wichita, Kansas. The permitted opening locations shall be as determined by the City Engineer of the City of Wichita, Kansas.

Monsanto Company,
a Delaware corporation
Michael C. Lenz, NA Sorghum Breeding Lead

State of Kansas) SS
Sedgwick County) The foregoing instrument acknowledged before me, this _____ day of _____, 2011, by Michael C. Lenz, NA Sorghum Breeding Lead of the Monsanto Company, a Delaware corporation, on behalf of the corporation.

_____, Notary Public
My App't. Exp. _____

This plat of "MONSANTO 2ND ADDITION", Sedgwick County, Kansas has been submitted to and approved by the Wichita-Sedgwick County Metropolitan Area Planning Commission, Wichita, Kansas.
Dated this _____ day of _____, 2011.
Wichita-Sedgwick County Metropolitan Area Planning Commission

_____, Chair
Debra Miller Stevens
_____, Secretary
John L. Schlegel

This plat approved and all dedications shown hereon accepted by the Board of Commissioners of Sedgwick County, Kansas, this _____ day of _____, 2011.

_____, Chair
David Uhrh
ATTEST: _____, County Clerk
Kelly B. Arnold

Reviewed in accordance with K.S.A. 58-2005 on this _____ day of _____, 2011.

Tricia L. Robella, L.S. #1246
Deputy County Surveyor
Sedgwick County, Kansas

Entered on transfer record this _____ day of _____, 2011.

_____, County Clerk
Kelly B. Arnold

State of Kansas) SS
Sedgwick County) This is to certify that this plat has been filed for record in the office of the Register of Deeds, this _____ day of _____, 2011 at _____ o'clock _____ M.; and is duly recorded.

_____, Register of Deeds
Bill Meek
_____, Deputy
Tonya Buckingham

MONSANTO 2ND ADDITION
19 JANUARY 2011

Baughman Company, P.A.
315 Ellis St. Wichita, KS 67211 P 316-262-1211 F 316-262-0149
ENGINEERING SURVEYING PLANNING LANDSCAPE ARCHITECTURE

E:\PROJECTS\MONSANTO2NDADDITION\MONSANTO2ND.PDWG\$RKR