

MONSANTO 2ND ADDITION

SEDGWICK COUNTY, KANSAS

State of Kansas) SS We, Baughman Company, P.A., Surveyors in
Sedgwick County) do hereby certify that we have surveyed and
platted "MONSANTO 2ND ADDITION", Sedgwick County, Kansas and that the
accompanying plat is a true and correct exhibit of the property surveyed,
described as follows: That part of the Southeast Quarter of Section 3,
Township 26 South, Range 3 West of the 6th Principal Meridian, Sedgwick
County, Kansas described as follows: Beginning at the northeast corner of
said Southeast Quarter; thence south along the east line of said
Southeast Quarter, 402 feet; thence west parallel with the north line of
said Southeast Quarter, 830 feet; thence north parallel with the east line
of said Southeast Quarter, 402 feet to a point on the north line of said
Southeast Quarter; thence east along said north line, 830 feet to the
point of beginning, subject to road rights-of-way of record.

Existing public easements and dedications
being vacated by virtue of K.S.A. 12-512(b).

Baughman Company, P.A.

This plat of "MONSANTO 2ND ADDITION",
Sedgwick County, Kansas has been submitted to and approved by the
Wichita-Sedgwick County Metropolitan Area Planning Commission, Wichita,
Kansas.

Dated this _____ day of _____, 2011.
Wichita-Sedgwick County Metropolitan Area Planning Commission

_____, Chair
Debra Miller Stevens

_____, Secretary
John L. Schlegel

This plat approved and all dedications
shown hereon accepted by the Board of Commissioners of
Sedgwick County, Kansas, this _____ day of _____, 2011.

_____, Chair
David Unruh

ATTEST: _____, County Clerk
Kelly B. Arnold

Reviewed in accordance with K.S.A. 58-2005
on this _____ day of _____, 2011.

_____,
Tricia L. Robello, L.S. #1246
Deputy County Surveyor
Sedgwick County, Kansas

Entered on transfer record this _____ day
of _____, 2011.

_____, County Clerk
Kelly B. Arnold

State of Kansas) SS This is to certify that this plat has been
Sedgwick County) filed for record in the office of the Register of Deeds, this _____ day
of _____, 2011 at _____ o'clock _____ M; and is duly recorded.

_____, Register of Deeds
Bill Meek

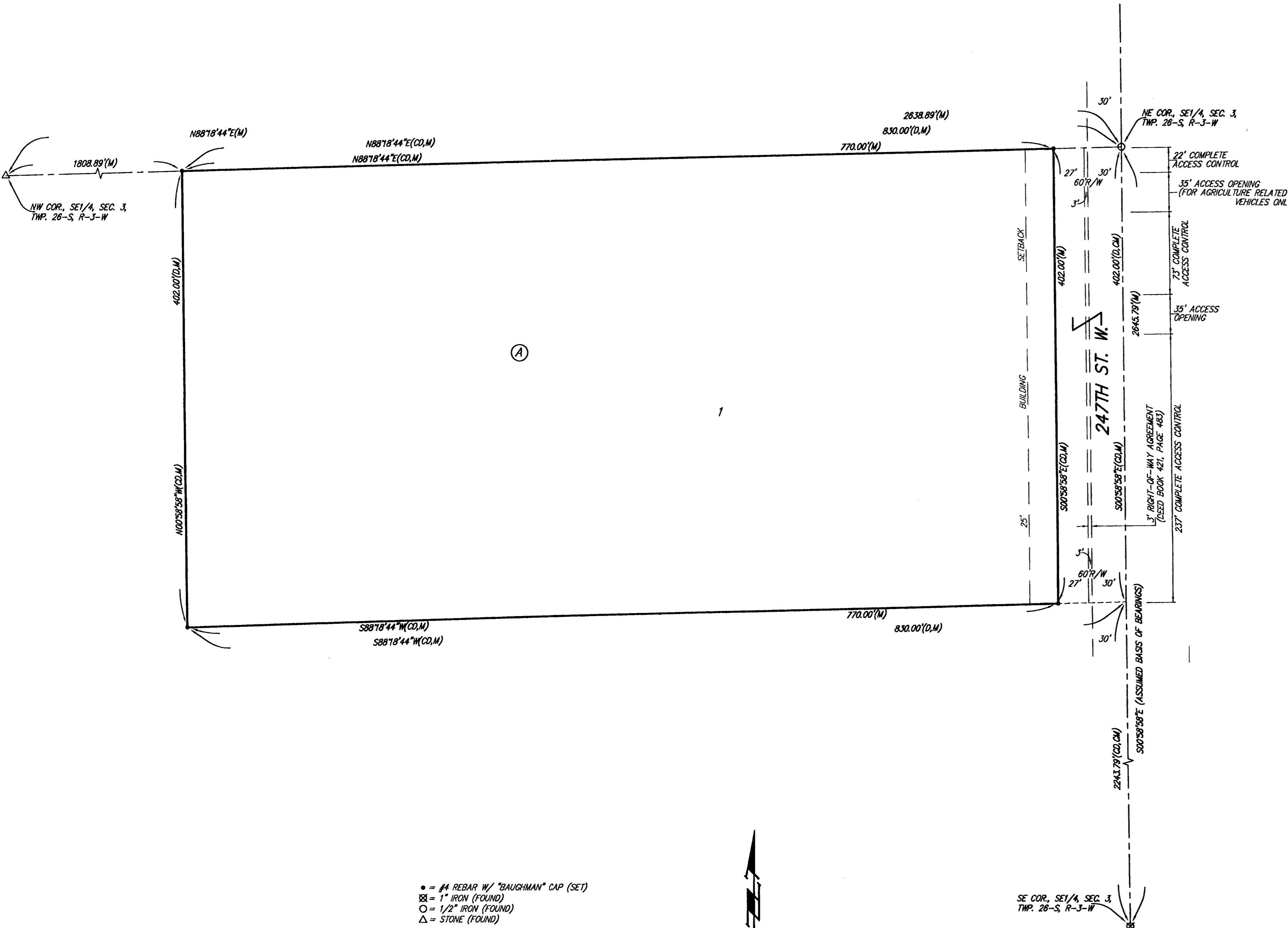
_____, Deputy
Tonya Buckingham

State of Kansas) SS The foregoing instrument acknowledged before
Sedgwick County) me, this _____ day of _____, 2011, by Michael C. Lenz,
NA Sorghum Breeding Lead of Monsanto Company, a Delaware corporation,
Successor by Merger to DeKalb Genetics Corporation, a Delaware
corporation, on behalf of the corporation.

JUDITH M. TERHUNE
Notary Public - State of Kansas
My App't. Expires 11-7-13

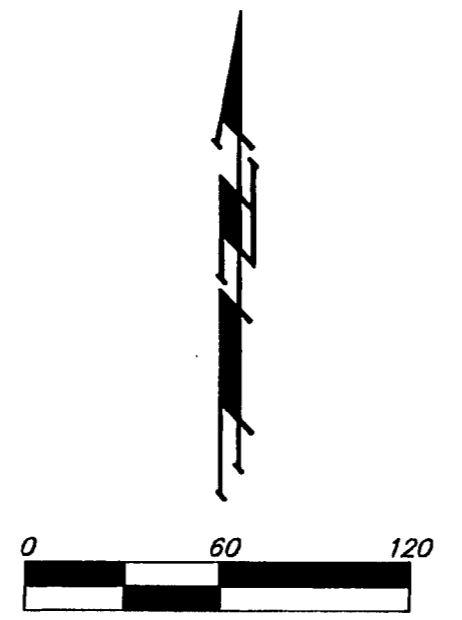
_____, Notary Public
JUDITH M. TERHUNE

My App't. Exp. 11-7-13



• = #4 REBAR W/ "BAUGHMAN" CAP (SET)
⊗ = 1" IRON (FOUND)
○ = 1/2" IRON (FOUND)
△ = STONE (FOUND)

(M) = MEASURED
(D) = DESCRIBED
(CD) = CALCULATED PER
DESCRIBED INFO.
(CM) = CALCULATED PER
MEASURED INFO.



NOTE:
A drainage plan has been developed for this subdivision and is on file with
the County Engineer or the Engineer for the appropriate governing body.
Drainage intent shall remain as depicted or as modified with the approval of
the County Engineer or the Engineer for the appropriate governing body. No
obstructions which impede the flow of this drainage plan shall be allowed.

MONSANTO 2ND ADDITION

SEDGWICK COUNTY, KANSAS

State of Kansas) SS We, Baughman Company, P.A., Surveyors in Sedgwick County) do hereby certify that we have surveyed and platted "MONSANTO 2ND ADDITION", Sedgwick County, Kansas and that the accompanying plat is a true and correct exhibit of the property surveyed, described as follows: That part of the Southeast Quarter of Section 3, Township 26 South, Range 3 West of the 6th Principal Meridian, Sedgwick County, Kansas described as follows: Beginning at the northeast corner of said Southeast Quarter, thence south along the east line of said Southeast Quarter, 402 feet; thence west parallel with the north line of said Southeast Quarter, 830 feet; thence north parallel with the east line of said Southeast Quarter, 402 feet to a point on the north line of said Southeast Quarter; thence east along said north line, 830 feet to the point of beginning, subject to road rights-of-way of record.

Existing public easements and dedications being vacated by virtue of K.S.A. 12-512(b).

Baughman Company, P.A.

This plat of "MONSANTO 2ND ADDITION", Sedgwick County, Kansas has been submitted to and approved by the Wichita-Sedgwick County Metropolitan Area Planning Commission, Wichita, Kansas.

Dated this _____ day of _____, 2011.
Wichita-Sedgwick County Metropolitan Area Planning Commission

_____, Chair
Debra Miller Stevens

_____, Secretary
John L. Schlegel

This plat approved and all dedications shown hereon accepted by the Board of Commissioners of Sedgwick County, Kansas, this _____ day of _____, 2011.

_____, Chair
David Unruh

ATTEST: _____, County Clerk
Kelly B. Arnold

Reviewed in accordance with K.S.A. 58-2005 on this _____ day of _____, 2011.

_____,
Tricia L. Robello, L.S. #1246
Deputy County Surveyor
Sedgwick County, Kansas

Entered on transfer record this _____ day of _____, 2011.

_____, County Clerk
Kelly B. Arnold

State of Kansas) SS This is to certify that this plat has been filed for record in the office of the Register of Deeds, this _____ day of _____, 2011 at _____ o'clock _____ M; and is duly recorded.

_____, Register of Deeds
Bill Meek

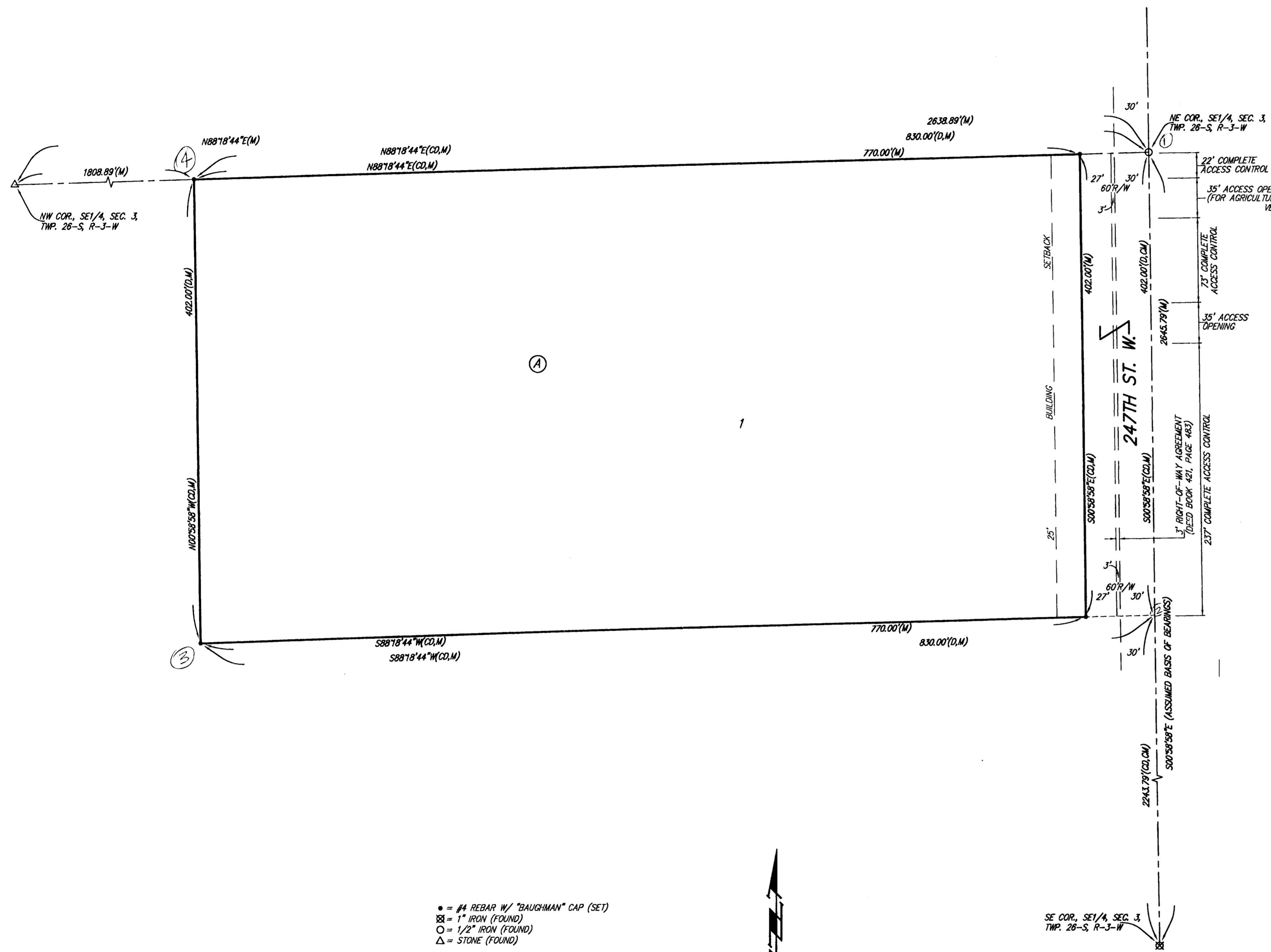
_____, Deputy
Tonya Buckingham

State of Kansas) SS The foregoing instrument acknowledged before me, this _____ day of _____, 2011, by Michael C. Lenz, NA Sorghum Breeding Lead of Monsanto Company, a Delaware corporation, Successor by Merger to DeKalb Genetics Corporation, a Delaware corporation, on behalf of the corporation.

JUDITH M. TERHUNE
Notary Public - State of Kansas
My App't. Expires 11-7-13

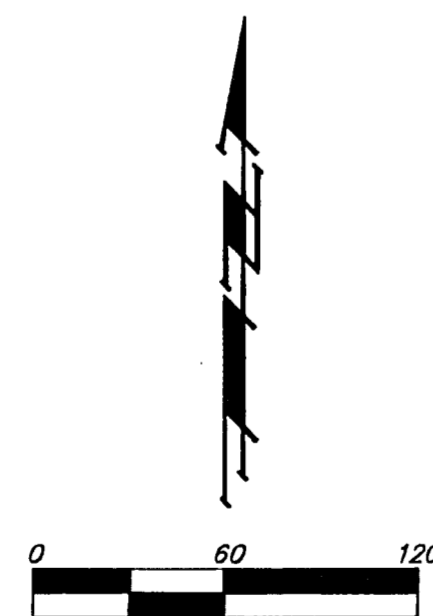
_____, Notary Public
JUDITH M. TERHUNE

My App't. Exp. 11-7-13



- = #4 REBAR W/ "BAUGHMAN" CAP (SET)
- ⊗ = 1" IRON (FOUND)
- = 1/2" IRON (FOUND)
- △ = STONE (FOUND)

- (M) = MEASURED
- (D) = DESCRIBED
- (CD) = CALCULATED PER DESCRIBED INFO
- (CM) = CALCULATED PER MEASURED INFO



Baughman Company, P.A.
315 Ellis St. Wichita, KS 67211 P 316-262-7271 F 316-262-0149
Baughman ENGINEERING | SURVEYING | PLANNING | LANDSCAPE ARCHITECTURE

NOTE: A drainage plan has been developed for this subdivision and is on file with the County Engineer or the Engineer for the appropriate governing body. Drainage plans shall remain as depicted or as modified with the approval of the County Engineer or the Engineer for the appropriate governing body. No obstructions which impede the flow of this drainage plan shall be allowed.