

McDONALD'S ADDITION

A Replat of Lots 101, 103, 105, 107, 109 and 111 on Hillside Avenue in Resurvey of Buck's 2nd Addition and Lots 1, 2, 3, 4, 5, 6 and 7 on Hillside Avenue in Schuckman's Addition and the East 26.25 feet of Lots 102, 104 and 106 on Lorraine Avenue in Resurvey of Buck's 2nd Addition all in the SE 1/4 of Section 15, T 27 S, R 1 E, City of Wichita, Sedgwick County, Kansas.

DESCRIPTION:

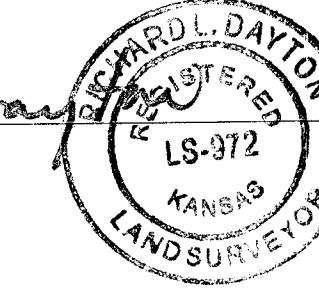
All of Lots 101, 103, 105, 107, 109 and 111 on Hillside Avenue in Resurvey of Buck's 2nd Addition to Wichita, Sedgwick County, Kansas.

AND:
Lots 1, 2, 3, 4, 5, 6 and 7 on Hillside Avenue in Schuckman's Addition to Wichita, Sedgwick County, Kansas.

AND:
The East 26.25 feet of Lots 102, 104 and 106 on Lorraine Avenue in Resurvey of Buck's 2nd Addition to Wichita, Sedgwick County, Kansas.

I, Richard L. Dayton, Kansas LS-972, do hereby certify that I have been in responsible charge of surveying and plating this "McDonald's Addition" an Addition to the City of Wichita, Sedgwick County, Kansas, and that the details of this plat are correct to the best of my knowledge and belief.

Richard L. Dayton
Richard L. Dayton, Kansas LS-972
Ozark Civil Engineering, Inc.
1008 NW J Street, Suite C
Bentonville, AR 72712
479-464-8850



BASIS OF BEARINGS:
KANSAS STATE PLANE GRID, SOUTH ZONE, NAD 83.
CONTROL STATION - WICHITA RESET
1,699,083.87 (N) 1,661,074.97 (E) (US SURVEY FEET) (GRID)
DATE OF ADJUSTMENT: JUNE 1991
COMBINED SCALE FACTOR: 0.999987961 (AT CONTROL STATION)

Know all men by these presents that we, the undersigned owners of the land as set forth hereon in the Land Surveyor's Certificate, have caused the same to be surveyed and platted into lots and blocks, the same to be known as Lot 1, Block A and Lot 1 Block B, "McDonald's Addition", an Addition to the City of Wichita, Sedgwick County, Kansas. The additional right of way for the alley as shown on this plat is hereby dedicated to and for the use of the public. A drainage plan has been developed for the described property and all drainage easements, rights of way, or reserves shall remain at established grades or as modified with the approval of the City Engineer, and unobstructed to allow for the conveyance of storm water. Access control as indicated is hereby granted to the appropriate governing body.

Caroline A. Griffin
McDonald's Real Estate Company *Caroline A. Griffin, Vice President AND ASSISTANT SECRETARY*

State of ILLINOIS }
County of DUPage } ss

This instrument was acknowledged before me on this 4th day of November, 2010, by Caroline A. Griffin, Vice President AND ASSISTANT SECRETARY on behalf of McDonald's Real Estate Company.

Patricia Mensler
My Commission expires 7-28-12
OFFICIAL SEAL
PATRICIA MENSLER
NOTARY PUBLIC - STATE OF ILLINOIS
MY COMMISSION EXPIRES 07/28/12

Reviewed in accordance with K.S.A. 58-2005 on this _____ day of _____, 2010.

Tricia L. Robello, LS-1246
Deputy County Surveyor
Sedgwick County, Kansas

This plat of "McDonald's Addition" has been submitted to and approved by the Wichita-Sedgwick County Metropolitan Planning Commission on this _____ day of _____, 2010.

By: Debra Miller Stevens, Chair Attest: John L. Schlegel, Secretary

This plat approved and all dedications shown hereon, if any, accepted by the City Council of the City of Wichita, Kansas, this _____ day of _____, 2010.

At the direction of the City Council:

Carl Brewer, Mayor Karen Sublett, City Clerk

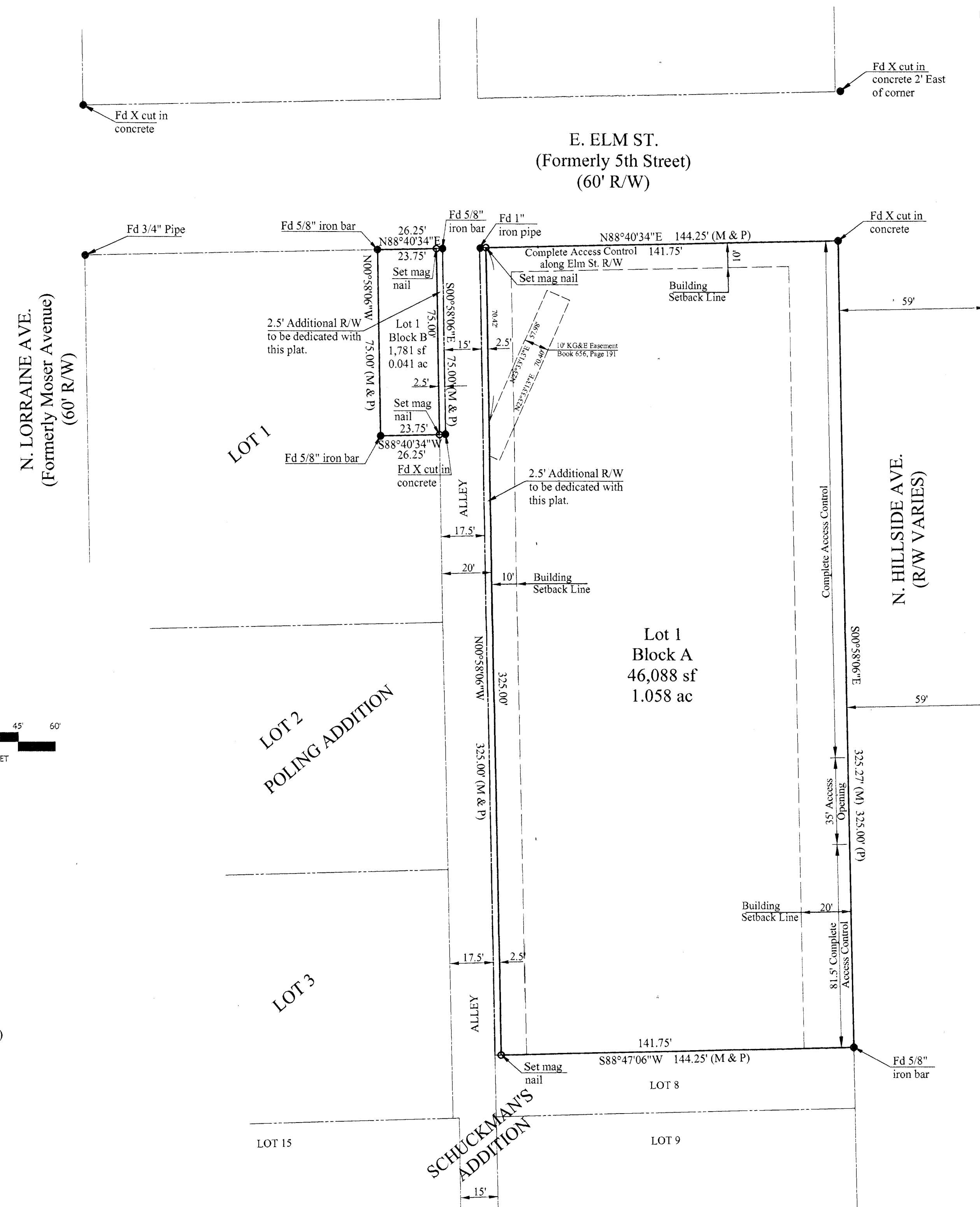
Entered on the Transfer Record this _____ day of _____, 2010.

Kelly B. Arnold, County Clerk
Sedgwick County, Kansas

State of Kansas } ss
Sedgwick County }

This is to certify that this instrument was filed for record in the office of the Register of Deeds, at _____ a.m. - p.m., on this _____ day of _____, 2010

William Meek, Register of Deeds Tonya Buckingham, Deputy



N. LORRAINE AVE.
(Formerly Moser Avenue)
(60' R/W)

E. ELM ST.
(Formerly 5th Street)
(60' R/W)

N. HILLSIDE AVE.
(R/W VARIES)

LOT 1

LOT 2
POLING ADDITION

LOT 3

Lot 1
Block A
46,088 sf
1.058 ac

SCHUCKMAN'S
ADDITION

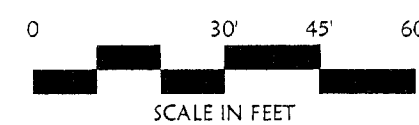
LOT 8

LOT 9

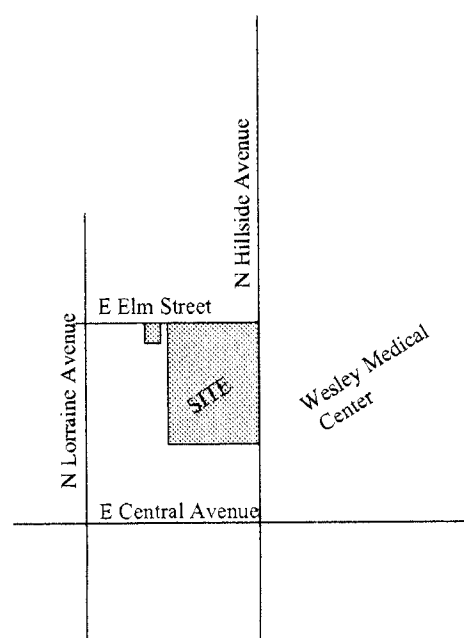
LOT 15

LEGEND

- Monument Set (as noted)
- Monument Found (as noted)
- (M) Measured Distance
- (P) Plat Distance



VICINITY MAP
NOT TO SCALE



zark
Civil Engineering Inc.
Bentonville • Kansas City

DATE OF FIELD SURVEY: JULY 13-14, 2009
SCALE: 1"=30'
DRAWN BY: RD DATE: 4-7-10
FIELD CREW: INDIAN CREEK DRAWING NO. S100201
CHECKED BY: RLD SHEET 1 OF 1