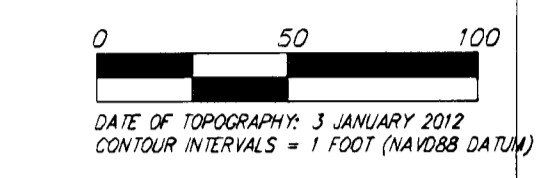
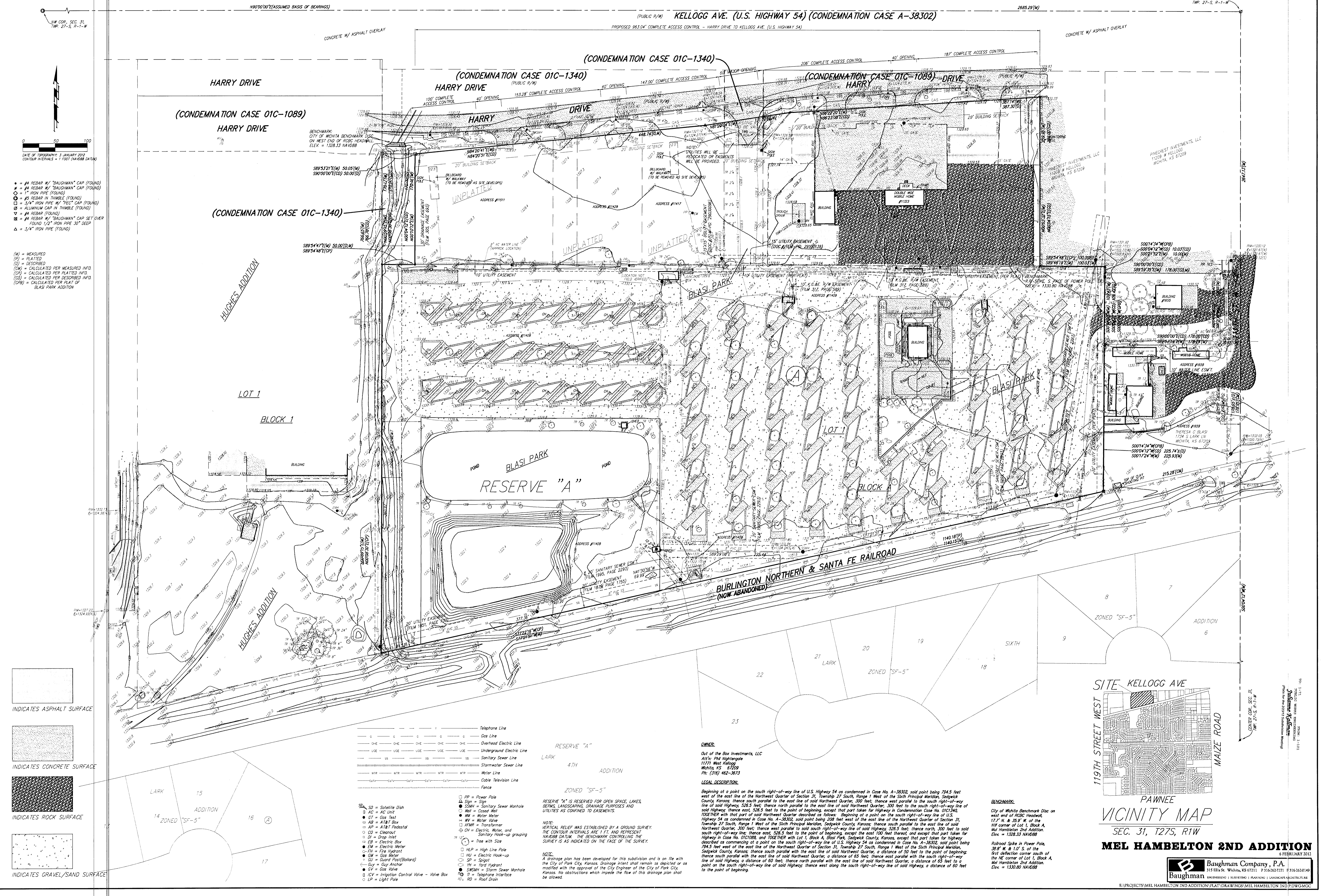


# PRELIMINARY PLAT

## MEL HAMBELTON 2ND ADDITION

### WICHITA, SEDGWICK COUNTY, KANSAS

(PUBLIC R/W) KELLOGG AVE. (U.S. HIGHWAY 54) (CONDEMNATION CASE A-38302)



- = #4 REBAR W/ "BAUGHMAN" CAP (FOUND)
- = #4 REBAR W/ "BAUGHMAN" CAP (FOUND)
- = 1" IRON PIPE (FOUND)
- = 3/4" IRON PIPE W/ "TEC" CAP (FOUND)
- = ALUMINUM CAP IN THIMBLE (FOUND)
- ▽ = #4 REBAR (FOUND)
- ⊗ = #4 REBAR W/ "BAUGHMAN" CAP SET OVER FOUND 1/2" IRON PIPE 30" DEEP
- △ = 3/4" IRON PIPE (FOUND)

- (M) = MEASURED
- (P) = PLATTED
- (D) = DESCRIBED
- (CM) = CALCULATED PER MEASURED INFO
- (CP) = CALCULATED PER PLATTED INFO
- (CD) = CALCULATED PER DESCRIBED INFO
- (CPB) = CALCULATED PER PLAT OF BLASI PARK ADDITION

- INDICATES ASPHALT SURFACE
- INDICATES CONCRETE SURFACE
- INDICATES ROCK SURFACE
- INDICATES GRAVEL/SAND SURFACE

- Telephone Line
- Gas Line
- Overhead Electric Line
- Underground Electric Line
- Sanitary Sewer Line
- Stormwater Sewer Line
- Water Line
- Cable Television Line
- Fence

- SD = Satellite Dish
- AC = AC Unit
- OT = Gas Test
- AB = A/B/T Box
- AP = A/B/T Pedestal
- CD = Cleonut
- DI = Drop Inlet
- EB = Electric Box
- EM = Electric Meter
- PH = Fire Hydrant
- GM = Gas Meter
- GP = Guard Post (Ballard)
- QA = Guy Anchor
- GV = Gas Valve
- ICV = Irrigation Control Valve - Valve Box
- LP = Light Pole
- PP = Power Pole
- SP = Sign
- SMH = Sanitary Sewer Manhole
- WH = Wash Well
- WM = Water Meter
- WTM = Water Meter
- TR = Transformer
- CH = Choke
- SHS = Sanitary Hook-up grouping
- FW = Free with Site
- HL = High Line Pole
- HU = Electric Hook-up
- SP = Spigot
- TH = Tard Hydrant
- SMH = Storm Sewer Manhole
- TI = Telephone Interface
- RD = Roof Drain

**RESERVE "A"**  
LARK 4TH ADDITION  
ZONED "SF-5"

RESERVE "A" IS RESERVED FOR OPEN SPACE, LAKES, BERMS, LANDSCAPING, DRAINAGE PURPOSES AND UTILITIES AS CONTAINED TO EASEMENTS.

NOTE:  
VERTICAL RELIEF WAS ESTABLISHED BY A GROUND SURVEY. THE CONTOUR INTERVALS ARE 1 FT. AND REPRESENT NAVD83 DATUM. THE BENCHMARK CONTROLLING THE SURVEY IS AS INDICATED ON THE FACE OF THE SURVEY.

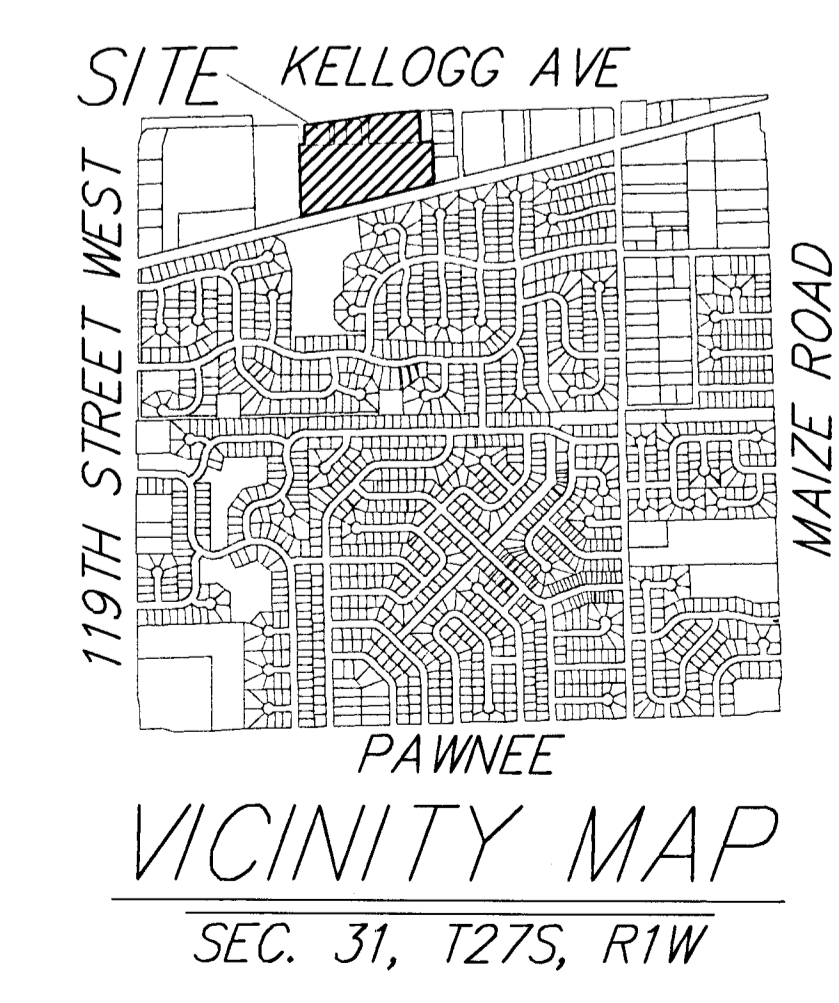
NOTE:  
A drainage plan has been developed for this subdivision and is on file with the City of Park City, Kansas. Drainage intent shall remain as depicted or as modified with the approval of the City Engineer of the City of Park City, Kansas. No obstructions which impede the flow of this drainage plan shall be allowed.

**OWNER:**  
Out of the Box Investments, LLC  
4110 Ph Nightengale  
11771 West Kellogg  
Wichita, KS 67209  
Ph. (316) 462-3673

**LEGAL DESCRIPTION:**  
Beginning at a point on the south right-of-way line of U.S. Highway 54 as condemned in Case No. A-38302, said point being 794.5 feet west of the east line of the Northwest Quarter of Section 31, Township 27 South, Range 1 West of the Sixth Principal Meridian, Sedgewick County, Kansas, thence south parallel to the east line of said Northwest Quarter, 300 feet, thence west parallel to the south right-of-way line of said Highway, 328.2 feet, thence north parallel to the east line of said Northwest Quarter, 300 feet to the south right-of-way line of said Highway, thence east, 526.5 feet to the point of beginning, except that part taken for Highway in Condemnation Case No. 01C1340, TOGETHER with that part of said Northwest Quarter described as follows: Beginning at a point on the south right-of-way line of U.S. Highway 54 as condemned in Case No. A-38302, said point being 208 feet west of the east line of the Northwest Quarter of Section 31, Township 27 South, Range 1 West of the Sixth Principal Meridian, Sedgewick County, Kansas, thence south parallel to the east line of said Northwest Quarter, 300 feet, thence west parallel to the south right-of-way line of said Highway, 526.5 feet, thence north, 300 feet to the south right-of-way line of said Highway, thence east, 526.5 feet to the point of beginning, except that part taken for Highway in Condemnation Case No. 01C1340, TOGETHER with that part of said Northwest Quarter, a distance of 50 feet to the point of beginning, thence south parallel with the east line of said Northwest Quarter, a distance of 65 feet, thence east parallel with the south right-of-way line of said Highway, a distance of 60 feet, thence north parallel with the east line of said Northwest Quarter, a distance of 65 feet to a point on the south right-of-way line of said Highway, thence west along the south right-of-way line of said Highway, a distance of 60 feet to the point of beginning.

**BENCHMARK:**  
City of Wichita Benchmark Disc on west end of RCBC Headwall, 17.7' N.E. & 33.9' W. of the W/E corner of Lot 1, Block A, Mel Hamblton 2nd Addition.  
Elev. = 1328.33 NAVD83

Railroad Spike in Power Pole, 39.8' W. & 1.0' S. of the first deflection corner south of the NE corner of Lot 1, Block A, Mel Hamblton 2nd Addition.  
Elev. = 1330.80 NAVD83



### MEL HAMBELTON 2ND ADDITION

SEC. 31, T27S, R1W

**Baughman Company, P.A.**  
 315 E 8th St., Wichita, KS 67211 | P: 316-262-7321 | F: 316-262-0149  
 BAKERSHIRE | ROYALTY | PLANNING | LANDSCAPE ARCHITECTURE

DRAWING PREPARED BY: [Name]  
 CHECKED BY: [Name]  
 DATE: 2/1/2018