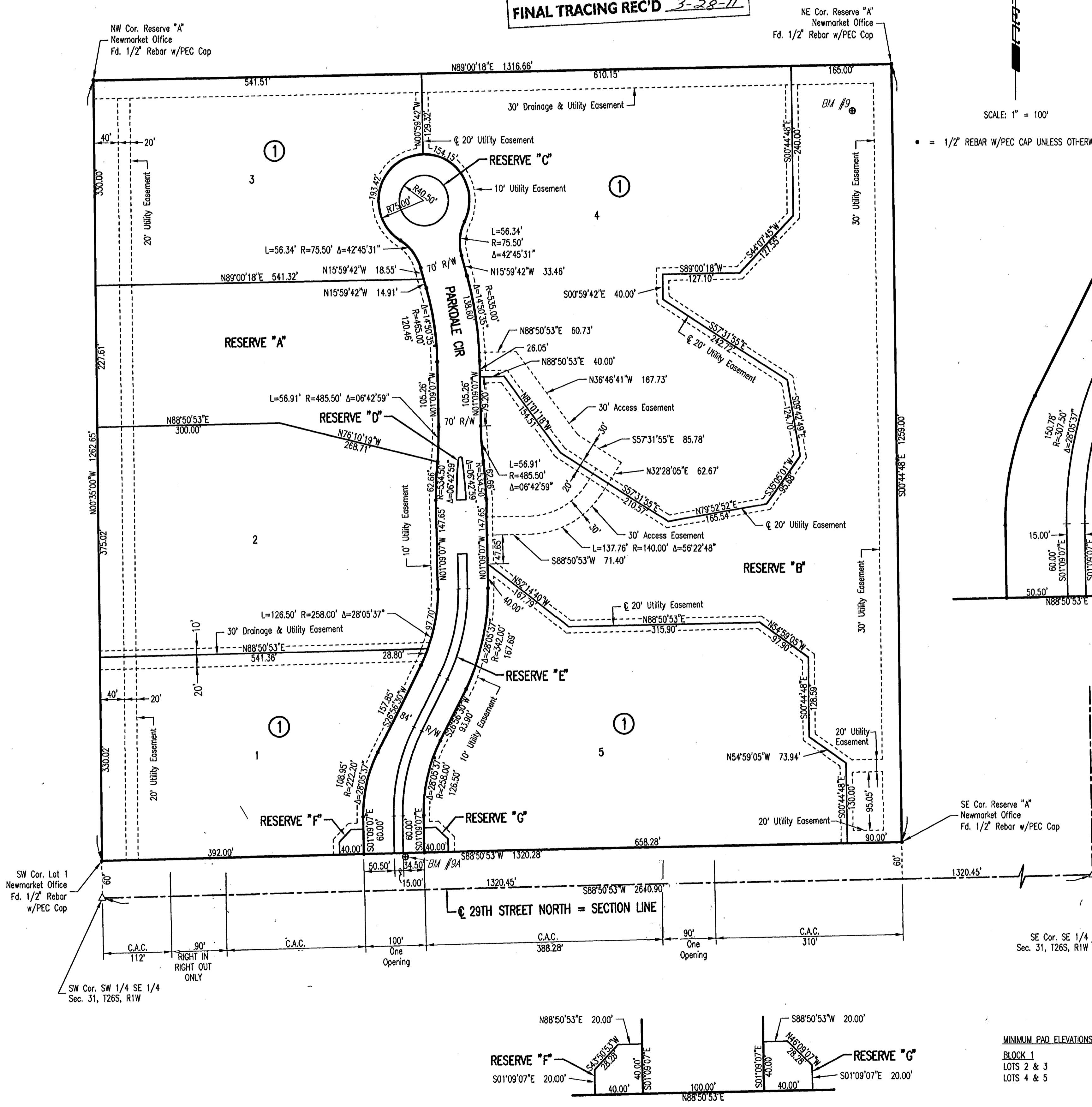


# NEWMARKET OFFICE 2ND

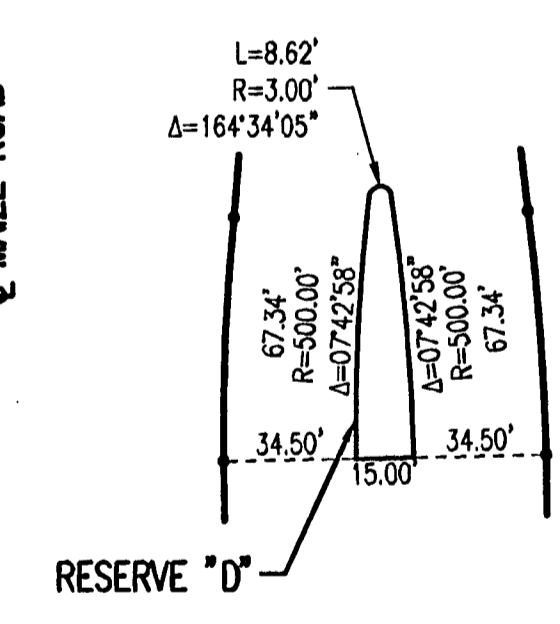
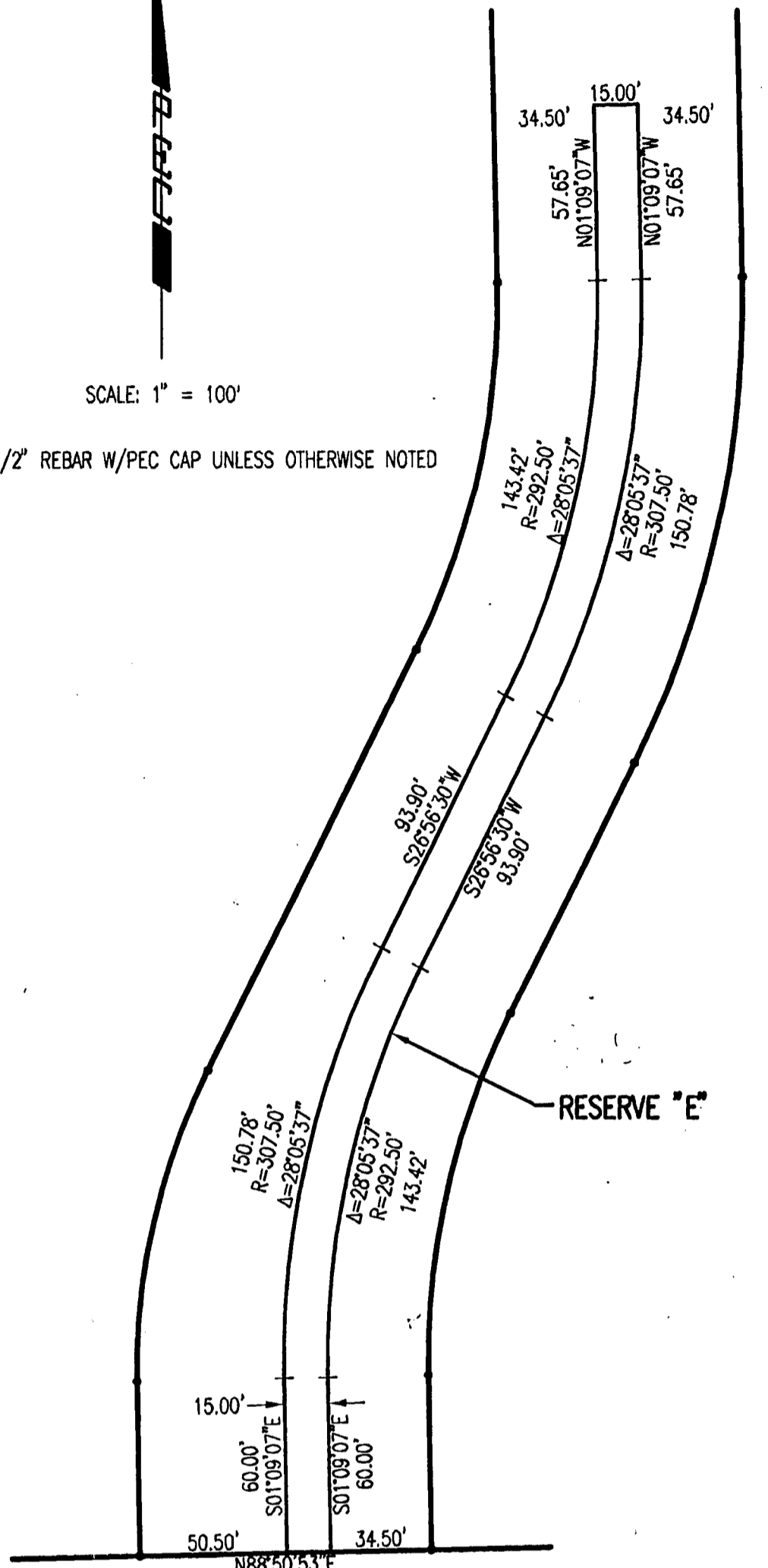
## AN ADDITION TO WICHITA, SEDGWICK COUNTY, KANSAS

**FINAL TRACING REC'D 3-28-11**



SCALE: 1" = 100'

• = 1/2" REBAR W/PEC CAP UNLESS OTHERWISE NOTED



**BENCHMARKS:**

BM #9

T-POST 70' +/- WEST AND 75' SOUTH OF NORTHEAST CORNER SW 1/4 SE 1/4 SEC. 31, T26S, R1W

ELEV. 1351.58 NAVD 88

BM #9A

CHISELED SQUARE AT NORTHEAST CORNER OF CONCRETE DRIVE APPROACH, SOUTH SIDE OF SIDEWALK ON NORTH SIDE OF 29TH STREET, AT INTERSECTION OF 29TH AND PARKDALE.

ELEV. 1359.26 NAVD 88

STATE OF KANSAS }  
 COUNTY OF SEDGWICK } SS

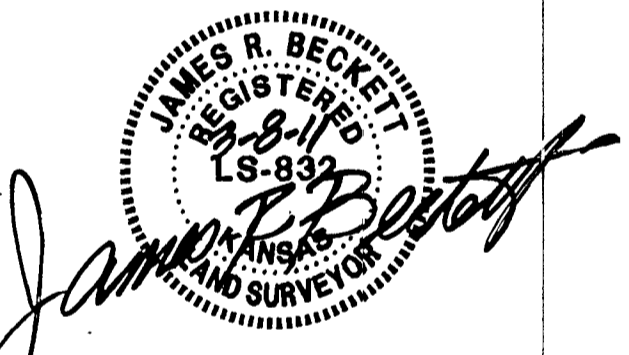
WE, PROFESSIONAL ENGINEERING CONSULTANTS, P.A., ENGINEERS AND SURVEYORS IN AFORESAID STATE AND COUNTY, DO HEREBY CERTIFY THAT THIS 8th DAY OF MARCH, 2011, WE HAVE SURVEYED

AND PLATTED NEWMARKET OFFICE 2ND, AN ADDITION TO WICHITA, SEDGWICK COUNTY, KANSAS, INTO LOTS, A BLOCK, AND RESERVES THE SAME BEING DESCRIBED AS FOLLOWS:

A REPLAT OF LOT 1, BLOCK 1, AND RESERVE "A" OF NEWMARKET OFFICE AN ADDITION TO WICHITA, SEDGWICK COUNTY, KANSAS.

ALL PUBLIC EASEMENTS LYING WITHIN THE ABOVE DESCRIBED TRACT OF LAND ARE HEREBY VACATED AND REPLATTED BY VIRTUE OF KSA 12-512(b) AMENDED.

ALL ABUTTERS RIGHT OF ACCESS TO AND FROM 29TH STREET NORTH OVER AND ACROSS THE SOUTH PROPERTY LINE IS HEREBY GRANTED TO THE CITY OF WICHITA, PROVIDED HOWEVER THAT THERE SHALL BE ACCESS TO 29TH STREET NORTH AT THREE OPENINGS AS SHOWN.



JAMES R. BECKETT, R.L.S. NO. 832  
 PROFESSIONAL ENGINEERING CONSULTANTS, P.A.

FEMA FLOOD PLAIN AND REGULATORY FLOODWAY BOUNDARIES ARE SUBJECT TO PERIODIC CHANGE, AND SUCH CHANGE MAY AFFECT THE INTENDED LAND USE WITHIN THE SUBDIVISION.

RESERVES "A" AND "B" ARE HEREBY PLATTED FOR DRAINAGE, LAKES, LANDSCAPING, SIDEWALKS, AND UTILITIES, CONFINED TO EASEMENTS. RESERVES "C", "D" AND "E" ARE HEREBY PLATTED FOR DRAINAGE, LANDSCAPING, AND ACCESS DRIVES. RESERVE "F" SHALL ALLOW FOR PUBLIC ACCESS ACROSS AT VARIOUS LOCATIONS FOR DRIVEWAYS, AS APPROVED BY THE CITY ENGINEER. RESERVES "G" AND "H" ARE HEREBY PLATTED FOR ENTRY MONUMENTS, LANDSCAPING, AND SIGNS. RESERVES "A" THRU "G" SHALL BE OWNED AND MAINTAINED BY AN OWNER'S ASSOCIATION TO BE FORMED WITHIN NEWMARKET OFFICE 2ND ADDITION.

EASEMENTS FOR THE CONSTRUCTION AND MAINTENANCE OF PUBLIC UTILITIES ARE HEREBY GRANTED.

THE 30 FOOT ACCESS EASEMENT IS HEREBY GRANTED TO THE CITY OF WICHITA FOR INGRESS, EGRESS AND DRIVEWAY PURPOSES TO LOT 4, BLOCK 1. CONSTRUCTION AND MAINTENANCE OF DRIVES WITHIN THE EASEMENT SHALL BE BY THE OWNER, SUCCESSORS, AND ASSIGNS OF LOT 4, BLOCK 1.

A DRAINAGE PLAN HAS BEEN APPROVED FOR THIS PLAT. ALL DRAINAGE EASEMENTS, RIGHTS-OF-WAY, OR RESERVES SHALL REMAIN AT ESTABLISHED GRADES AND UNOBSTRUCTED TO ALLOW FOR THE CONVEYANCE OF STORM WATER, UNLESS MODIFIED WITH THE APPROVAL OF THE CITY ENGINEER.

KNOW ALL MEN BY THESE PRESENTS THAT WE, THE UNDERSIGNED PROPERTY OWNERS OF THE LAND AS ABOVE SET FORTH IN THE SURVEYOR'S CERTIFICATE, HAVE CAUSED THE LAND TO BE SURVEYED AND PLATTED INTO LOTS, A BLOCK, AND RESERVES THE SAME TO BE KNOWN AS NEWMARKET OFFICE 2ND, AN ADDITION TO WICHITA, SEDGWICK COUNTY, KANSAS.

MINIMUM PAD ELEVATIONS (LOWEST OPENING) SHALL BE AS FOLLOWS:

BLOCK 1	NAVD 88
LOTS 2 & 3	1355.0
LOTS 4 & 5	1354.0

OWNERS:  
 NEWMARKET OFFICE, LLC, A KANSAS LIMITED LIABILITY COMPANY

JERRY JONES, VICE PRESIDENT

STATE OF KANSAS }  
 COUNTY OF SEDGWICK } SS

THIS INSTRUMENT WAS ACKNOWLEDGED BEFORE ME ON THIS 21st DAY OF

March, 2011, BY JERRY JONES, VICE PRESIDENT OF

NEWMARKET OFFICE, LLC, A KANSAS LIMITED LIABILITY COMPANY

SARAH E. HATTRUP, NOTARY PUBLIC

SARAH E. HATTRUP  
 Notary Public - State of Kansas  
 My Appl. Expires 12/16/12

MY APPOINTMENT EXPIRES: December 16, 2012

STATE OF KANSAS }  
 COUNTY OF SEDGWICK } SS

THIS PLAT OF NEWMARKET OFFICE 2ND, AN ADDITION TO WICHITA, SEDGWICK COUNTY, KANSAS, HAS BEEN SUBMITTED TO AND APPROVED BY THE WICHITA-SEDGWICK COUNTY METROPOLITAN AREA PLANNING COMMISSION, WICHITA, KANSAS.

DATED THIS \_\_\_\_\_ DAY OF \_\_\_\_\_, 2011.

WICHITA-SEDGWICK COUNTY METROPOLITAN AREA PLANNING COMMISSION

DEBRA MILLER STEVENS, CHAIRMAN

JOHN L. SCHLEGEL, SECRETARY

REVIEWED IN ACCORDANCE WITH K.S.A. 58-2005 ON THIS \_\_\_\_\_ DAY OF \_\_\_\_\_, 2011.

TRICIA L. ROBELLO, LS #1246  
 DEPUTY COUNTY SURVEYOR  
 SEDGWICK COUNTY KANSAS

ENTERED ON TRANSFER RECORD THIS \_\_\_\_\_ DAY OF \_\_\_\_\_, 2011.

KELLY B. ARNOLD, COUNTY CLERK

THIS IS TO CERTIFY THAT THIS INSTRUMENT WAS FILED FOR RECORD IN THE REGISTER OF DEEDS OFFICE AT \_\_\_\_\_, M., ON THE \_\_\_\_\_ DAY OF \_\_\_\_\_, 2011.

BILL MEEK, REGISTER OF DEEDS

TONYA BUCKINGHAM, DEPUTY

THIS PLAT IS APPROVED AND ALL DEDICATIONS SHOWN HEREON, IF ANY ARE ACCEPTED BY THE CITY COUNCIL OF THE CITY OF WICHITA, KANSAS, THIS

\_\_\_\_\_ DAY OF \_\_\_\_\_, 2011.

CARL BREWER, MAYOR

KAREN SUBLETT, CITY CLERK

Sheet 03-08-2011 11:27:40 AM by CSI  
 Plot Size: 1:100 03-08-2011 11:26:30 AM by CATHY S. LUK  
 CS:2010.05531.05531.Final Plot