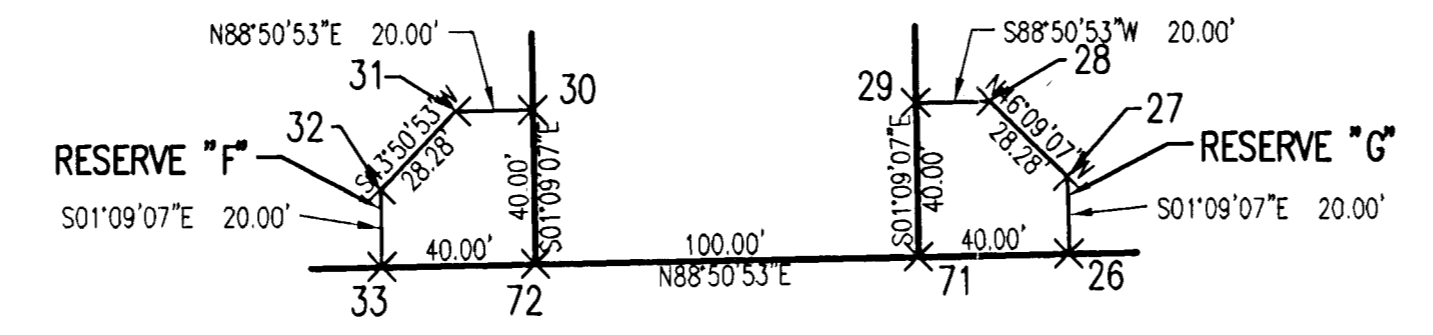
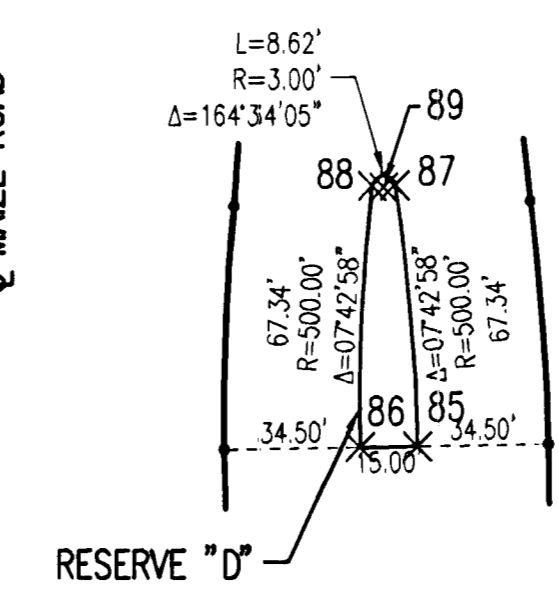
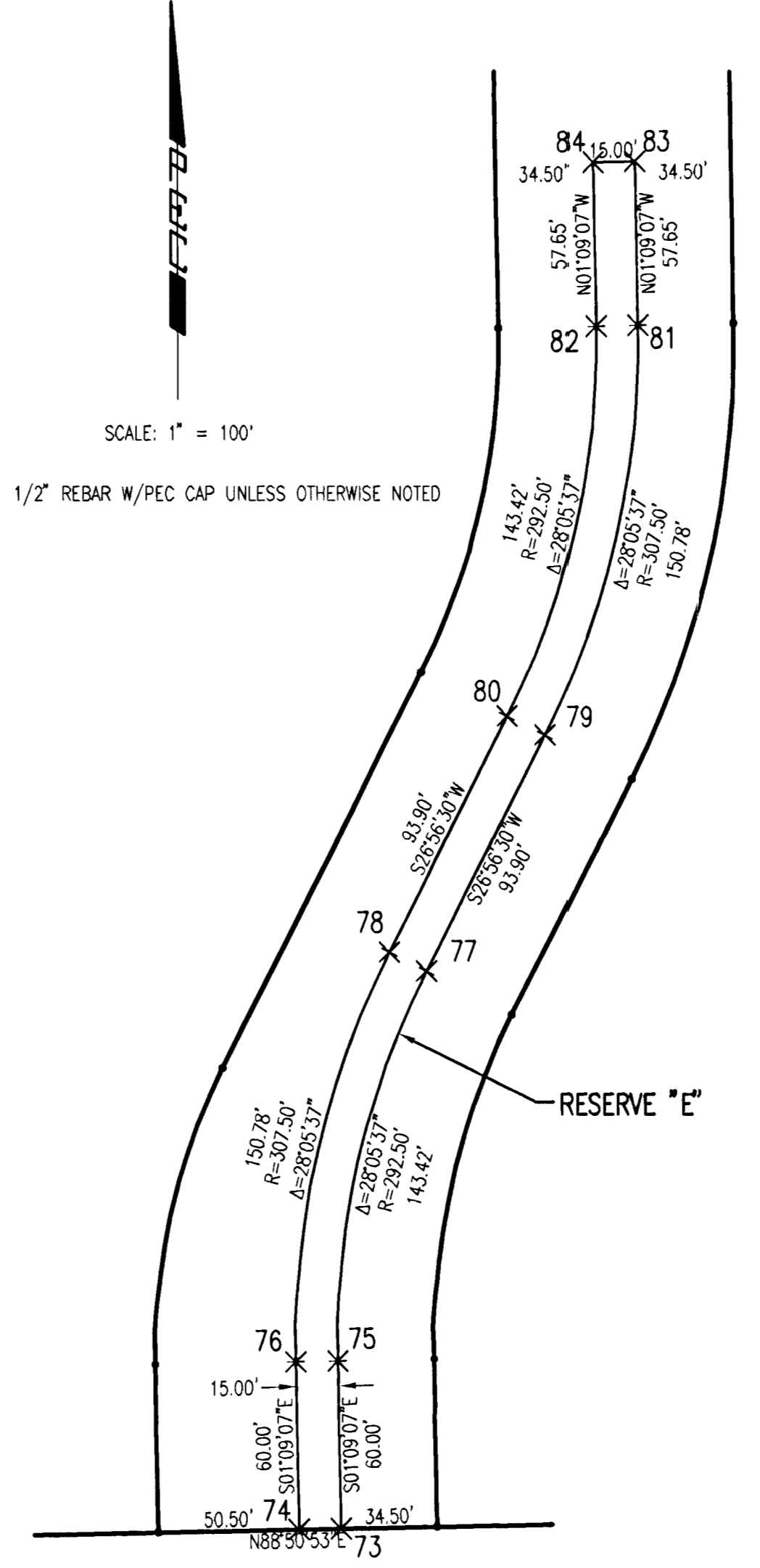
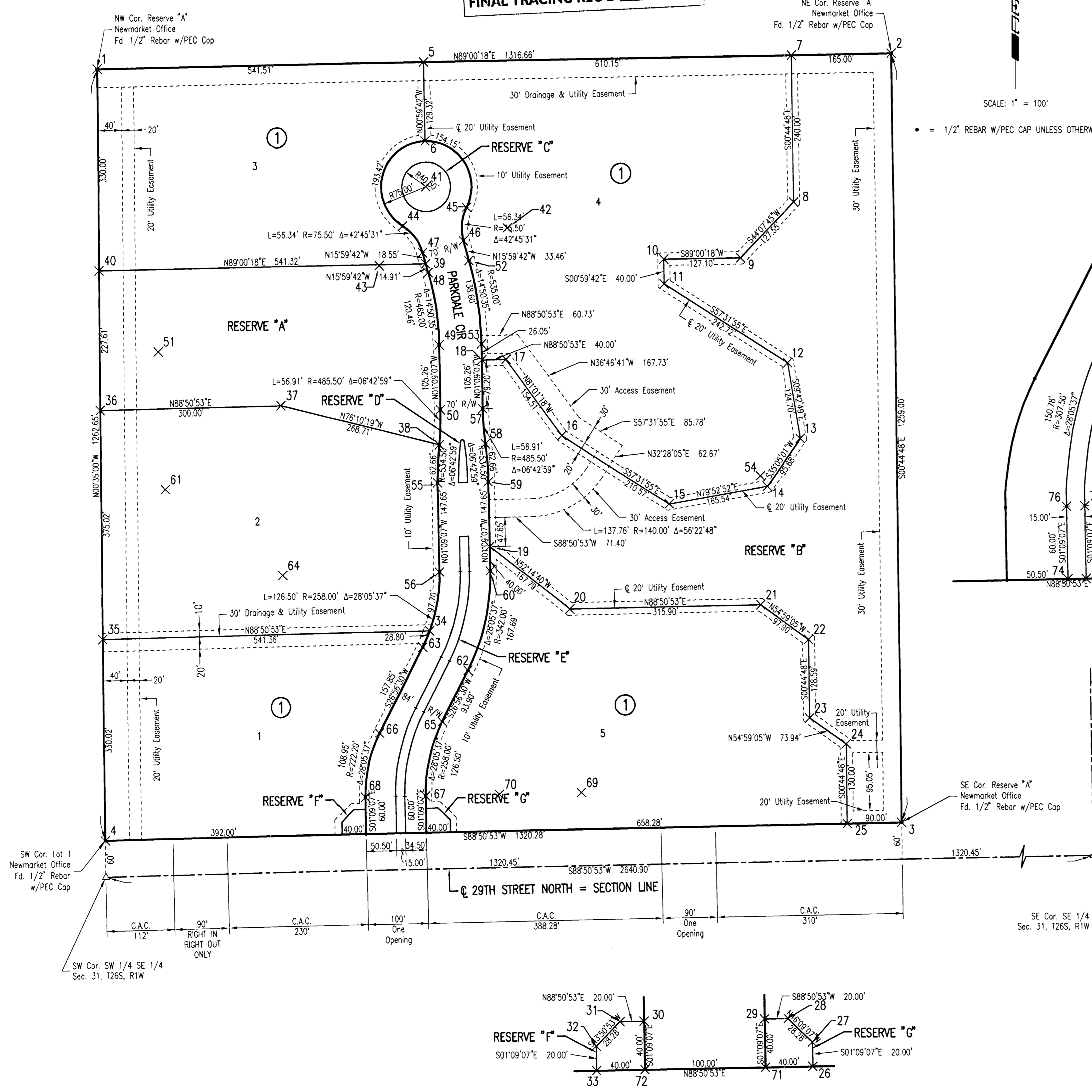


BUBBLE MAP
NEWMARKET OFFICE 2ND
 AN ADDITION TO WICHITA, SEDGWICK COUNTY, KANSAS

FINAL TRACING REC'D 3-22-11



Saved 03-01-2011 2:45:12 PM by CSL
 Plot Scale 1:100 03-24-2011 4:11:25 PM by JOSH L. SULLARD
 C:\A\1053\1053\Bubble Map