

**CERTIFICATE OF SURVEY**

I, Gregory J. Allison, a registered land surveyor in Kansas, do hereby certify that I have been in responsible charge of surveying and platting of "QUIKTRIP 12TH ADDITION" an addition to Wichita, Sedgwick County, Kansas, into Lots, and a Block, the same being accurately set forth in the accompanying plat and described herein:

Lots 25 thru 36, inclusive, Block 1, Orme & Phillips Addition, to the City of Wichita, TOGETHER WITH, the North 8 feet of the vacated street adjacent on the South, in Sedgwick County, Kansas, TOGETHER WITH, Lots 8, 10, 12, 14, 16, 18, 20, 22, and 24, on Lawrence Avenue, now Broadway Avenue, and Lots 7, 9, 11, 13, 15, 17, 19, 21, and 23, on Topeka Avenue, in Block 1, Orme and Phillips Addition to the City of Wichita, in Sedgwick County, Kansas, EXCEPT that part of said Lots 8, 10, 12, 14, and 16, on Lawrence Avenue, now Broadway Avenue, described as follows:  
 BEGINNING at the Northeast corner of said Lot 8; thence S00°46'04"E, 13.07 feet on an assumed bearing along the East line of said Lot 8; thence N89°09'34"W, 120.12 feet; thence S07°04'31"W, 117.22 feet to a point on the South line of said Lot 16, on Lawrence Avenue, now Broadway Avenue, said point being 4.00 feet East of the Southwest corner of said Lot 16; thence S88°53'57"W, 4.00 feet along the South line of said Lot 16; thence N00°46'12"E, 125.03 feet along the West line of said Lots, to the Northwest corner of said Lot 8; thence N88°53'57"E, 140.07 feet along the North line of said Lot 8 to the POINT OF BEGINNING,  
 AND EXCEPT that part of Lot 7, on Topeka Avenue, described as follows:  
 BEGINNING at the Northeast corner of said Lot 7; thence S00°45'56"E, 18.50 feet on an assumed bearing along the East line of said Lot 7; thence N89°09'34"W, 140.13 feet to a point on the West line and 13.75 feet South of the Northwest corner of said Lot 7; thence N00°46'04"W, 13.75 feet to the Northwest corner of said Lot 7; thence N88°53'57"E, 140.07 feet along the North line of said Lot 7 to the POINT OF BEGINNING,  
 TOGETHER WITH, the south 17.00 feet of the North 25.00 feet of Orme Street right of way lying West of Topeka Avenue and East of Broadway Avenue.

All streets, alleys, easements, rights-of-ways, building setbacks, access controls, together with all other public dedications within the above described property, are hereby vacated and replatted by virtue of K.S.A. 12-512b.

I hereby certify that the details of this plat are correct to the best of my knowledge and belief this \_\_\_ day of \_\_\_\_\_, 2012.

Gregory J. Allison, PE, LS #1257  
 MKEC Engineering Consultants, Inc.  
 411 North Webb Road  
 Wichita, Kansas 67206

**OWNER'S CERTIFICATES**

Know all men by these presents that we the undersigned property owners of the land above set forth in the Registered Land Surveyor's Certificate, have caused the same to be surveyed and platted into Lots, and a Block, the same to be known as "QUIKTRIP 12TH ADDITION" an addition to Wichita, Sedgwick County, Kansas.

Easements for the construction and maintenance of public utilities and drainage, as indicated hereon, are hereby granted to the public.

A drainage plan has been developed for this plat. All drainage easements, rights-of-ways, or reserves shall remain at established grades or as modified with the approval of the applicable City or County Engineer, and unobstructed to allow for the conveyance of storm water.

Jerry A. Sims, L.L.C., a Kansas Limited liability company

Jerry A. Sims, Manager

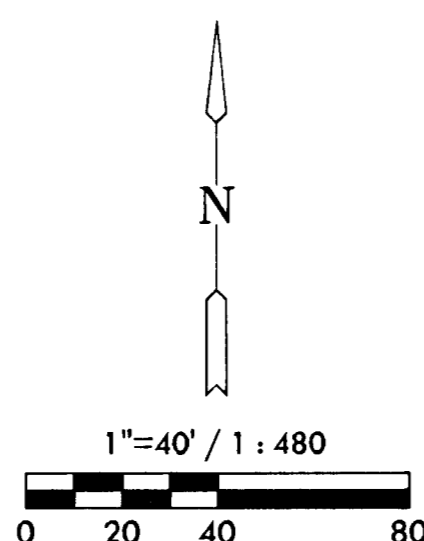
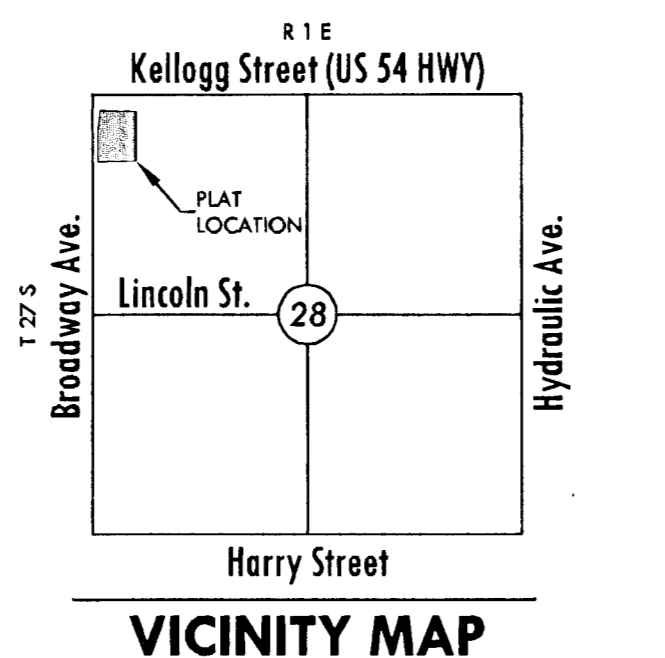
STATE OF KANSAS, SEDGWICK COUNTY} ss:

This instrument was acknowledged before me on \_\_\_ day of \_\_\_\_\_, 2012, by Jerry A. Sims, Manager of Jerry A. Sims, L.L.C., a Kansas limited liability company.

IN WITNESS WHEREOF, I have hereunto set my hand and affixed my official seal, the day and year last above written.

SFAI

\_\_\_\_\_, Notary Public  
 Notary Public:  
 My Term Expires: \_\_\_\_\_



Basis of Bearing: Kansas coordinate system of 1983 south zone grid bearing of S00°46'22"E along the W. line of NW 1/4, Sec. 28, T27S, R1E, 6th P.M.

This plat is surveyed and platted on NAVD88-09 using Kansas state plane south zone coordinates, modified to the surface, having a combined adjustment scale factor of 1.000120014401728

**BENCH MARK**

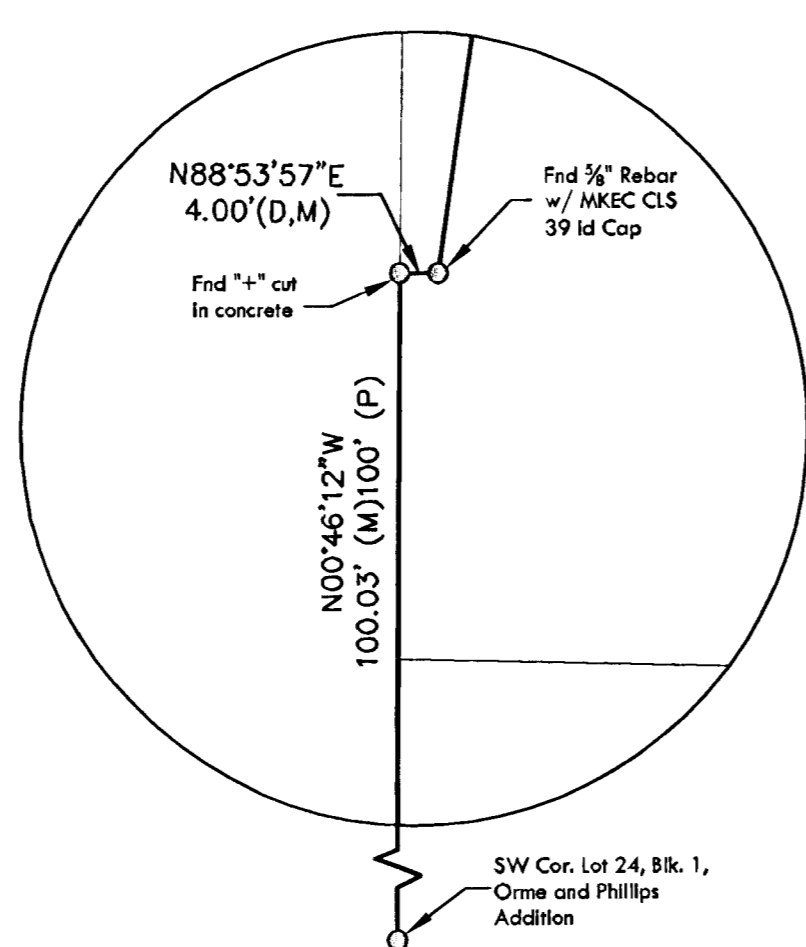
BM - Chiseled square cut on Southwest corner of concrete traffic signal pole base on Southeast corner of Kellogg and Broadway (Northwest corner of site). Elev. = 1295.41 NAVD 88.

**LEGEND**

Date of Survey: March, 2012

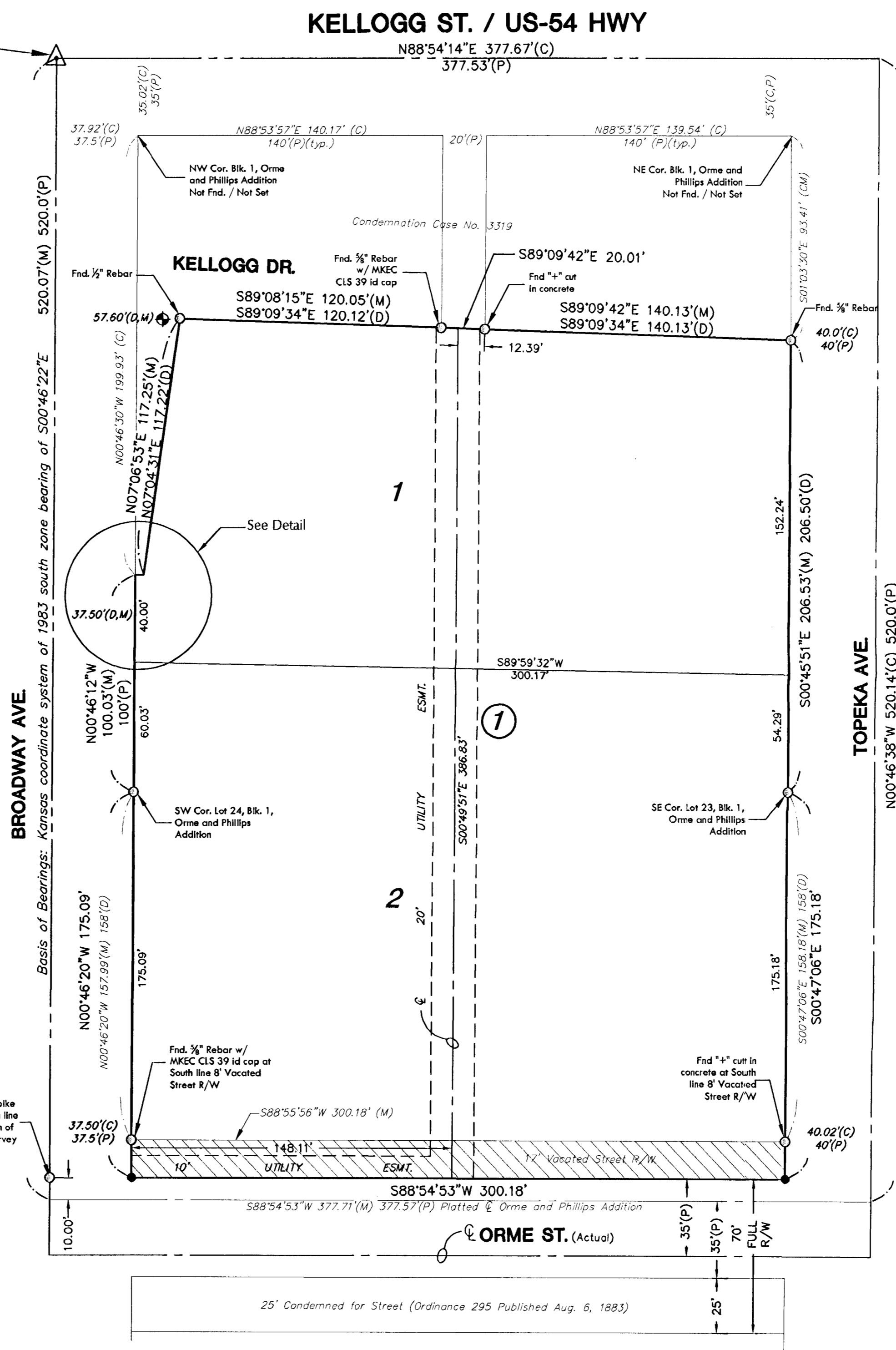
- △ = Section Corner Monument Found
- = Found survey monument see annotation for type
- = Set 3/8" rebar w/ MKEC CLS 39 id. cap
- (M) = Measured
- (C) = Calculated from measured
- (D) = Described
- = 17' Vacated Street R/W

**DETAIL**



**FINAL PLAT**  
**QUIKTRIP 12TH ADDITION**  
**AN ADDITION TO WICHITA, SEDGWICK COUNTY, KANSAS**

NW cor., NW 1/4, Sec. 28, T27S, R1E, 6th P.M.  
 Fnd. 3/8" Rebar w/ MKEC CLS 39 id cap



**PLANNING COMMISSION CERTIFICATE**

This plat of "QUIKTRIP 12TH ADDITION" has been submitted to and approved by the Wichita-Sedgwick County Metropolitan Area Planning Commission, Wichita, Kansas.

Dated this \_\_\_ day of \_\_\_\_\_, 2012

WICHITA-SEDGWICK COUNTY METROPOLITAN AREA PLANNING COMMISSION

\_\_\_\_\_, Chair  
 Shawn Farney, Chair

Attest: \_\_\_\_\_ Secretary  
 John L. Schlegel, Secretary

**GOVERNING BODY CERTIFICATE**

The dedications shown on this plat are hereby accepted and this plat is hereby approved by the governing body of the City of Wichita, Kansas.

Dated this \_\_\_ day of \_\_\_\_\_, 2012

At the direction of the City Council.

\_\_\_\_\_, Mayor  
 Carl Brewer, Mayor

Attest: \_\_\_\_\_ City Clerk  
 Karen Sublett, City Clerk

**TRANSFER RECORD**

STATE OF KANSAS, SEDGWICK COUNTY} ss:

Entered on transfer record this \_\_\_ day of \_\_\_\_\_, 2012

\_\_\_\_\_, County Clerk  
 Kelly B. Arnold, County Clerk

**REGISTER OF DEEDS CERTIFICATE**

STATE OF KANSAS, SEDGWICK COUNTY} ss:

This is to certify that this instrument was filed for record in the Register of Deeds office this \_\_\_ day of \_\_\_\_\_, 2012, at \_\_\_\_\_ o'clock \_\_\_M; and is duly recorded.

\_\_\_\_\_, Register of Deeds  
 Bill Meek, Register of Deeds

Attest: \_\_\_\_\_ Deputy  
 Tonya E. Buckingham, Deputy

**COUNTY SURVEYOR**

STATE OF KANSAS, SEDGWICK COUNTY} ss:

Reviewed in accordance with K.S.A. 58-2005 on this \_\_\_ day of \_\_\_\_\_, 2012.

\_\_\_\_\_, Deputy County Surveyor  
 Tricia L. Robello, LS #1246  
 Deputy County Surveyor  
 Sedgwick County, Kansas

**MKEC**  
**ENGINEERING**  
**CONSULTANTS, INC.**  
 411 N. WEBB ROAD  
 WICHITA, K.S. 67206  
 316-684-9600

D:\mkec\2012\12012012\Final\_Cover\_Files\2012\_QUIKTRIP\_12TH\_ADDITION.dwg 7/25/2012 10:04:42 AM CRT