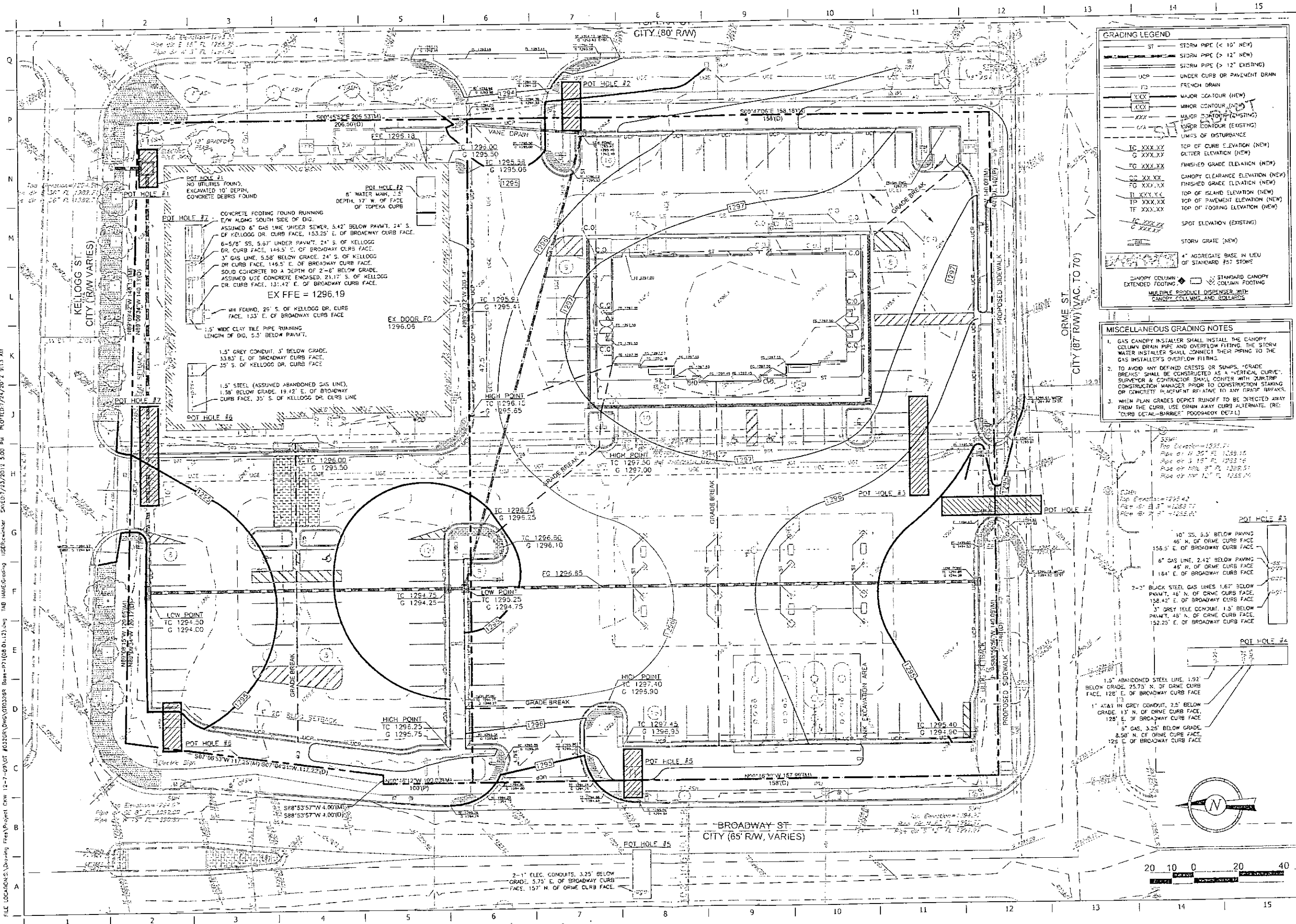


FILE LOCATION: \\d:\proj\12-7-09\UT_60326R\DWG\UT0326R_Bas-P1(08.D)13.dwg USER: hameg Date: 12/23/2011 5:00 PM PLOT: 7/24/2012 9:13 AM



GRADING LEGEND

- ST STORM PIPE (< 12" NEW)
- STORM PIPE (> 12" NEW)
- STORM PIPE (> 12" EXISTING)
- UCP UNDER CURB OR PAVEMENT DRAIN
- F2 FRENCH DRAIN
- MAJOR DRAINAGE (NEW)
- MINOR DRAINAGE (NEW)
- MAJOR DRAINAGE (EXISTING)
- MINOR DRAINAGE (EXISTING)
- LIMITS OF DISTURBANCE
- TOP OF CURB ELEVATION (NEW)
- GUTTER ELEVATION (NEW)
- FINISHED GRADE ELEVATION (NEW)
- CANOPY CLEARANCE ELEVATION (NEW)
- FINISHED GRADE ELEVATION (NEW)
- TOP OF ISLAND ELEVATION (NEW)
- TOP OF PAVEMENT ELEVATION (NEW)
- TOP OF FOOTING ELEVATION (NEW)
- SPOT ELEVATION (EXISTING)
- STORM GRATE (NEW)
- 4" AGGREGATE BASE IN LIEU OF STANDARD #57 STONE
- CANOPY COLUMN EXTENDED FOOTING
- STANDARD CANOPY COLUMN FOOTING
- MULTIPLE PRODUCT DISPENSER WITH CANOPY COLUMN AND RAILINGS

- MISCELLANEOUS GRADING NOTES**
- GAS CANOPY INSTALLER SHALL INSTALL THE CANOPY COLUMN DRAIN PIPE AND OVERFLOW FITTING. THE STORM WATER INSTALLER SHALL CONNECT THEIR PIPING TO THE GAS INSTALLER'S OVERFLOW FITTING.
 - TO AVOID ANY DEFINED CRESTS OR SINKS, "GRADE BREAKS" SHALL BE CONSTRUCTED AS A "VERTICAL CURVE". SURVEYOR & CONTRACTOR SHALL CONFER WITH JURISDICTION CONSTRUCTION MANAGER PRIOR TO CONSTRUCTION STAKING OR CONCRETE PLACEMENT RELATIVE TO ANY GRADE BREAKS.
 - WHEN PLAN GRADES DEPICT RUNOFF TO BE DEFLECTED AWAY FROM THE CURB, USE DRAIN AWAY CURB ALTERNATE. (SEE "CURB DETAIL-BARRIER" P003000.DWG)

POT HOLE #1
NO UTILITIES FOUND, EXCAVATED 10' DEPTH, CONCRETE DEBRIS FOUND

POT HOLE #2
6" WATER MAIN, 12' DEPTH, 17' N. OF FACE OF TOPEKA CURB

POT HOLE #3
10" SS, 5.5' BELOW PAVING, 46' N. OF DRIVE CURB FACE, 155.5' E. OF BROADWAY CURB FACE

POT HOLE #4
6" GAS LINE, 2.42' BELOW PAVING, 45' N. OF DRIVE CURB FACE, 184' E. OF BROADWAY CURB FACE

POT HOLE #5
2-1" BLACK STEEL GAS LINES 1.67' BELOW PAVMT, 16' N. OF DRIVE CURB FACE, 138.42' E. OF BROADWAY CURB FACE

POT HOLE #6
3" GREY TELE CONDUIT, 1.5' BELOW PAVMT, 48' N. OF DRIVE CURB FACE, 152.25' E. OF BROADWAY CURB FACE

POT HOLE #7
1.5" ABANDONED STEEL LINE, 1.97' BELOW GRADE, 25.75' N. OF DRIVE CURB FACE, 128' E. OF BROADWAY CURB FACE

POT HOLE #8
1" AT&T IN GREY CONDUIT, 2.5' BELOW GRADE, 17' N. OF DRIVE CURB FACE, 128' E. OF BROADWAY CURB FACE

POT HOLE #9
6" GAS, 3.25' BELOW GRADE, 8.58' N. OF DRIVE CURB FACE, 128' E. OF BROADWAY CURB FACE

QuikTrip No. 0326R
BROADWAY & ORME
WICHITA, KANSAS



PROTOTYPE: P-7 (05/01/2)
DIVISION:
VERSION: 001
DESIGNED BY:
DRAWN BY:
REVIEWED BY:

REV	DATE	DESCRIPTION	ORIGINAL ISSUE DATE

SHEET TITLE:
GRADING PLAN

SHEET NUMBER:
C110

