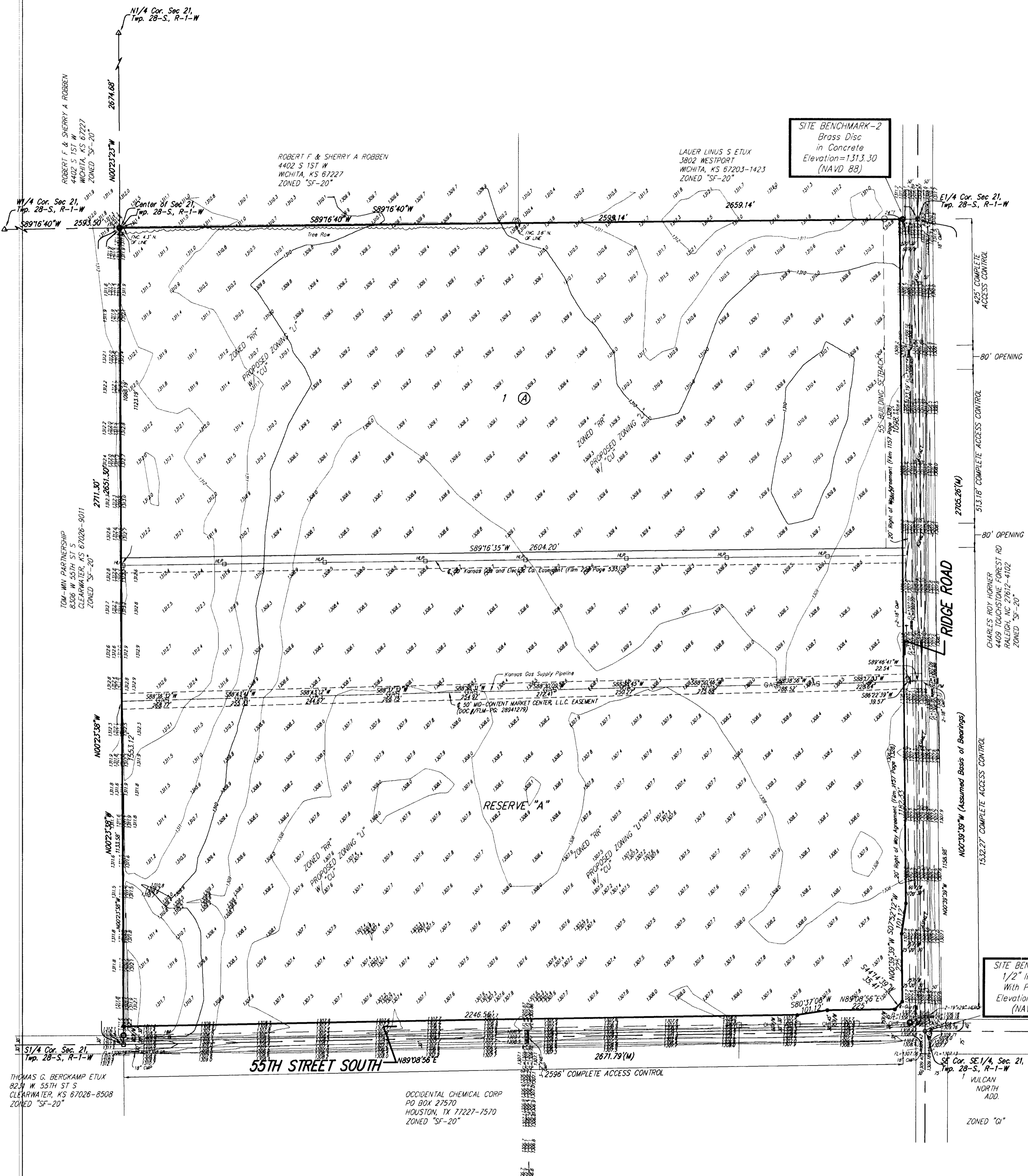


ONE-STEP FINAL PLAT

RESOURCE RECOVERY MANAGEMENT ADDITION

SEDGWICK COUNTY, KANSAS



State of Kansas) SS
 Sedgwick County) We, Baughman Company, P.A., Surveyors in
 aforesaid county and state do hereby certify that we have surveyed and
 platted "RESOURCE RECOVERY MANAGEMENT ADDITION", Sedgwick County,
 Kansas and that the accompanying plat is a true and correct exhibit of
 the property surveyed, described as the Southeast Quarter of Section 21,
 Township 28 South, Range 1 West, Sedgwick County, all being subject to road
 rights-of-way of record

This plat of "RESOURCE RECOVERY
 MANAGEMENT ADDITION", Sedgwick County, Kansas has been submitted to
 and approved by the Wichita-Sedgwick County Metropolitan Area Planning
 Commission, Wichita, Kansas.
 Dated this _____ day of _____, 2011.
 Wichita-Sedgwick County Metropolitan Area Planning Commission

Existing public easements and dedications
 being vacated by virtue of K.S.A. 12-512(b).
 _____, Chair
 Shawn Farney
 _____, Secretary
 John L. Schlegel
 _____, Surveyor
 Michael G. Conrey
 _____, Manager
 John W. Dugan
 _____, Notary Public

Know all men by these presents that we,
 the undersigned, have caused the land in the surveyors certificate to be
 platted into a Lot, a Block, a Reserve and Streets, to be known as
 "RESOURCE RECOVERY MANAGEMENT ADDITION", Sedgwick County, Kansas.
 The utility easements are hereby granted as indicated for the construction
 and maintenance of all public utilities. The streets are hereby dedicated
 to and for the use of the public. Reserve "A" is hereby reserved for open
 space, lakes, detention/retention purposes, berms, landscaping, agricultural
 and agricultural related uses, pipelines as confined to easements, drainage
 purposes, and utilities as confined to easements. Access controls shall
 be as depicted on the face of the plat and are hereby granted to the
 appropriate governing body, Sedgwick County, Kansas. The Minimum
 Building Pad Elevations for the lowest opening to the structures shall be
 as indicated on the face of the plat.

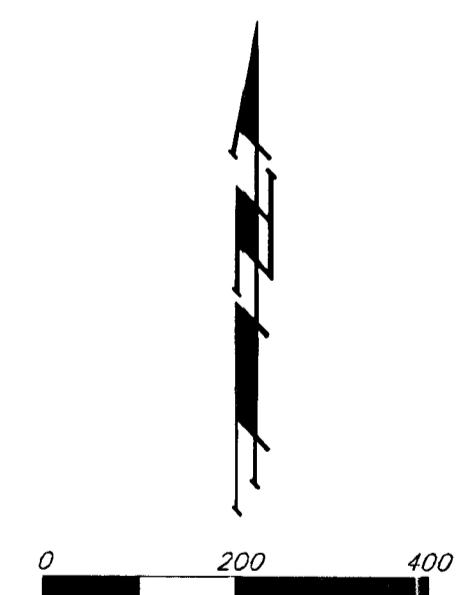
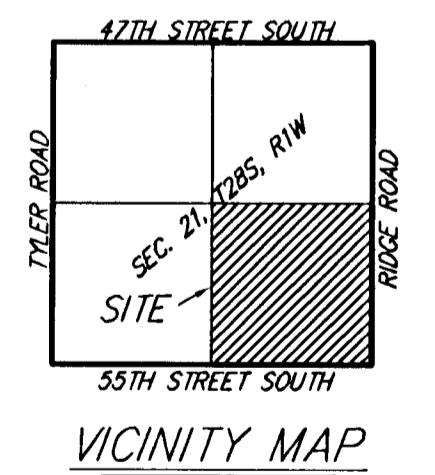
This plat approved and all dedications
 shown hereon accepted by the City Council of the City of Wichita,
 Kansas, this _____ day of _____, 2011.
 _____, Mayor
 Carl Brewer
 _____, City Clerk
 Karen Sublett
 This plat approved and all dedications
 shown hereon accepted by the Board of Commissioners of
 Sedgwick County, Kansas, this _____ day of _____, 2011.

State of Kansas) SS
 Sedgwick County) The foregoing instrument acknowledged before
 me, this _____ day of _____, 2011, by John W. Dugan, Manager of
 the Resource Recovery Management, LLC, on behalf of the corporation.

_____ Chairman
 Dave Unruh
 ATTEST: _____ County Clerk
 Kelly B. Arnold

My App't. Exp. _____

Reviewed in accordance with K.S.A. 58-2005
 on this _____ day of _____, 2011.
 _____ Deputy County Surveyor
 Tricia L. Robello, L.S. #1246
 Sedgwick County, Kansas
 Entered on transfer record this _____ day
 of _____, 2011.
 _____ County Clerk
 Kelly B. Arnold



- = #4 REBAR W/ "BAUGHMAN" CAP (FOUND)
- △ = 3/4" IRON (FOUND)
- ⊗ = #4 REBAR (FOUND)
- = 1/2" IRON (FOUND)
- = STONE (FOUND)
- (M) = MEASURED

MINIMUM BUILDING PAD ELEVATIONS FOR LOWEST OPENING TO THE STRUCTURES		
LOT	BLOCK	ELEVATION NAVD83
1	A	1311.0

- HLPE = High Line Pole
- GuyC = Guy Anchor
- OP = Guy Pole
- PM = Pipeline Marker
- FP = Fence Post
- Sign = Sign
- HM = Historical Marker (Chisholm Trail)
- PP = Power Pole

THOMAS G. BERKAMP ETUX
 823 W. 55TH ST S
 CLEARWATER, KS 67026-8508
 ZONED "SF-20"

OCCIDENTAL CHEMICAL CORP
 PO BOX 27570
 HOUSTON, TX 77227-7570
 ZONED "SF-20"

RESOURCE RECOVERY MANAGEMENT ADDITION

6 OCTOBER 2011
Baughman Baughman Company, P.A.
 315 Ellis St. Wichita, KS 67211 P 316-262-1211 F 316-262-0149
 ENGINEERING | SURVEYING | PLANNING | LANDSCAPE ARCHITECTURE