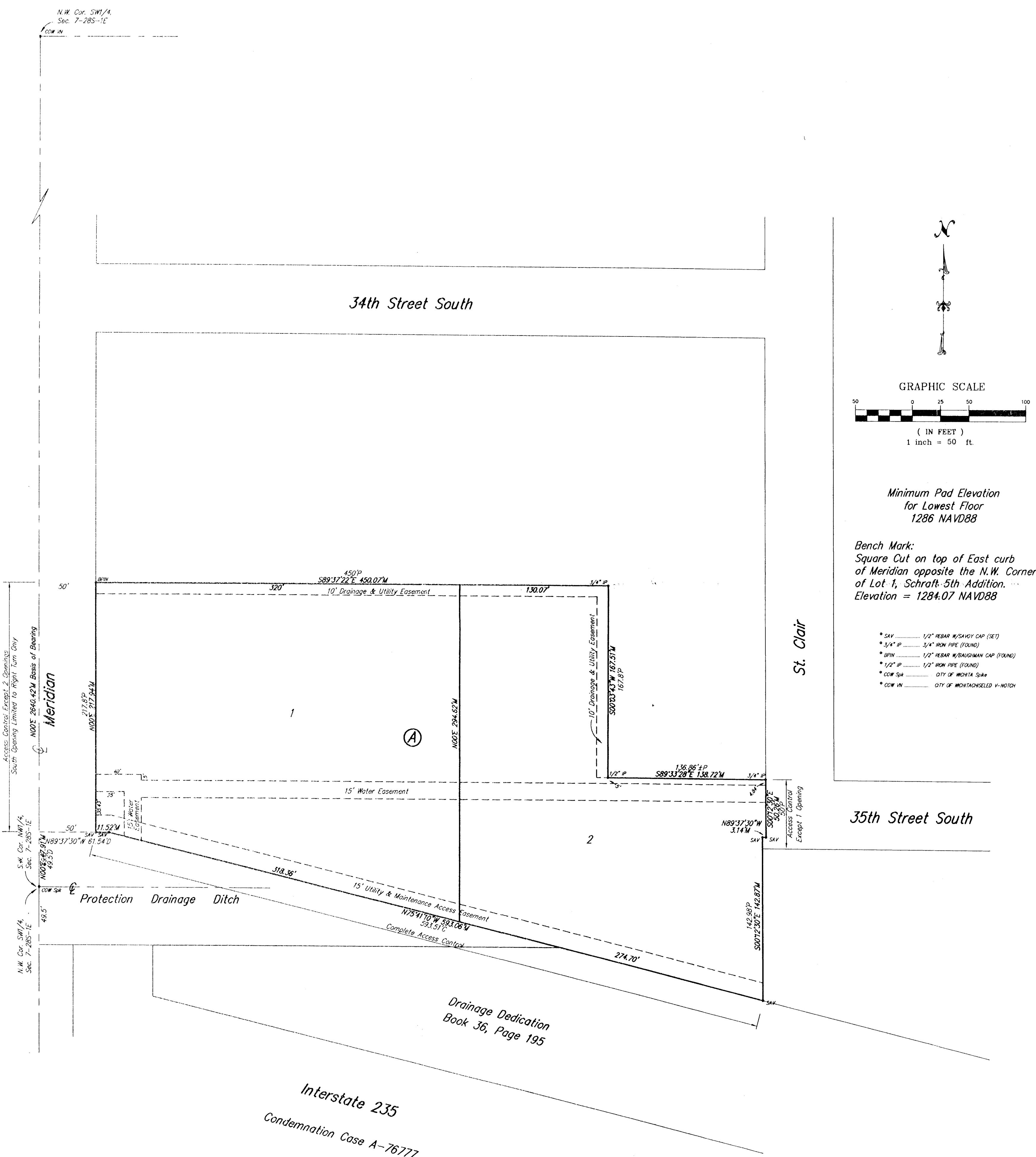


Sub 1000-37

SCHRAFT 5TH ADDITION

Wichita, Sedgwick County, Kansas



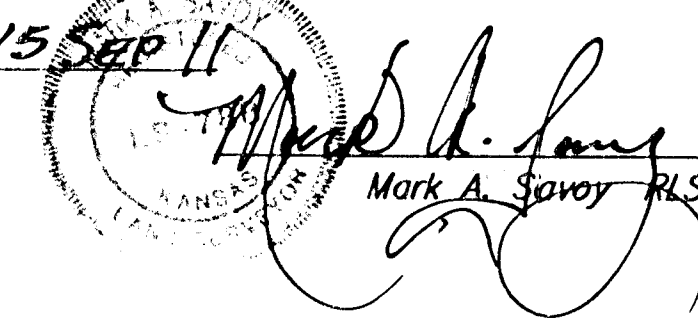
State of Kansas) SS
Sedgwick County)

We, Savoy Company, P.A., Surveyors in aforesaid county and state do hereby certify that, under the supervision of the undersigned, we have surveyed and platted "SCHRAFT 5TH ADDITION", Wichita, Sedgwick County, Kansas and that the accompanying plat is a true and correct exhibit of the property surveyed, described as and being a replat of;

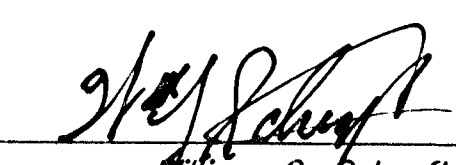
Lot 1, Joseph E. Hall Addition, Wichita, Kansas, together with all of the 50 feet of street right-of-way for 35th St. S., lying south of and adjacent to said Lot 1 and Lots 6 and 7, Hatcher-Gomez Addition to Wichita, Kansas, together with all of the 50 feet of street right-of-way, lying south of said Lots 6, 7 and Lot 8, in said Hatcher-Gomez Addition, Wichita, Kansas and together with the south 49.5 feet of the NW1/4 of Sec. 7, Twp. 28-S, R-1-E of the 6th P.M., Sedgwick County, Kansas, lying west of the west line of Lot 1, Schraft 3rd Addition, Wichita, Kansas and together with that part of the SW1/4 of Sec. 7, Twp. 28-S, R-1-E of the 6th P.M., Sedgwick County, Kansas, lying north of a line 130 feet north of and parallel with the north right-of-way line of I-235 Highway as condemned in Case A-76777 and lying west of the west line of Lot 1, Schraft 3rd Addition, Wichita, Kansas.

All Public easements and dedications being vacated by virtue of K.S.A. 12-512(b).

Savoy Company, P.A.

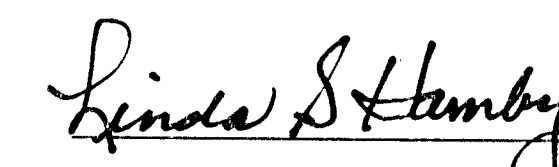
Date 15 SEP 11

Mark A. Savoy RLS #788 Surveyor

Know all men by these presents that We, the undersigned, have caused the land described in the surveyors certificate to be platted into Lots and a Block to be known as "SCHRAFT 5TH ADDITION", Wichita, Sedgwick County, Kansas. The drainage and utility easements are hereby granted as indicated drainage purposes and for the construction and maintenance of all public utilities. The water easement is hereby granted as indicated for the construction and maintenance of water lines. The utility and maintenance access easement is hereby granted for the construction and maintenance of all public utilities and for maintenance access purposes. A drainage plan has drainage plan has been developed for this plat and all drainage easements, rights-of-way, or reserves shall remain at established grades, or as modified with the approval of the City Engineer, and unobstructed to allow for the conveyance of stormwater. Access control is hereby granted as indicated on the face of the plat. The Minimum Pad Elevation for the lowest floor is as shown on the face of the plat.


William G. Schraft

State of Kansas) SS
Sedgwick County)

The foregoing instrument acknowledged before me, this 15th day of September, 2011 by William G. Schraft, a single person.

My App't. Exp 10/30/11

Linda S. Hamby Notary Public
LINDA S. HAMBY
NOTARY PUBLIC
STATE OF KANSAS

This plat of "SCHRAFT 5TH ADDITION", Wichita, Sedgwick County, Kansas, has been submitted to and approved by the Wichita-Sedgwick County Metropolitan Area Planning Commission, Wichita, Kansas.

Dated this _____ day of _____, _____
Wichita-Sedgwick County Metropolitan Area Planning Commission

Debra Miller Stevens Chair

John L. Schlegel Secretary

This plat approved and all dedications shown hereon, accepted by the City Council of the City of Wichita, Kansas, this _____ day of _____, 2011.

Carl Brewer Mayor

Karen Sublett City Clerk

Reviewed in accordance with K.S.A. 58-2005 on this _____ day of _____, 2011.

Tricia L. Robello, LS #1246 Deputy County Surveyor
Sedgwick County Kansas

Entered on transfer record this _____ day of _____, 2011.

Kelly B. Arnold County Clerk

State of Kansas) SS
Sedgwick County)

This is to certify that this plat has been filed for record in the office of the Register of Deeds, this _____ day of _____, 2011, at o'clock _____M. and is duly recorded.

Bill Meek Register of Deeds

Tonya Buckingham Deputy

Interstate 235
Condemnation Case A-76777