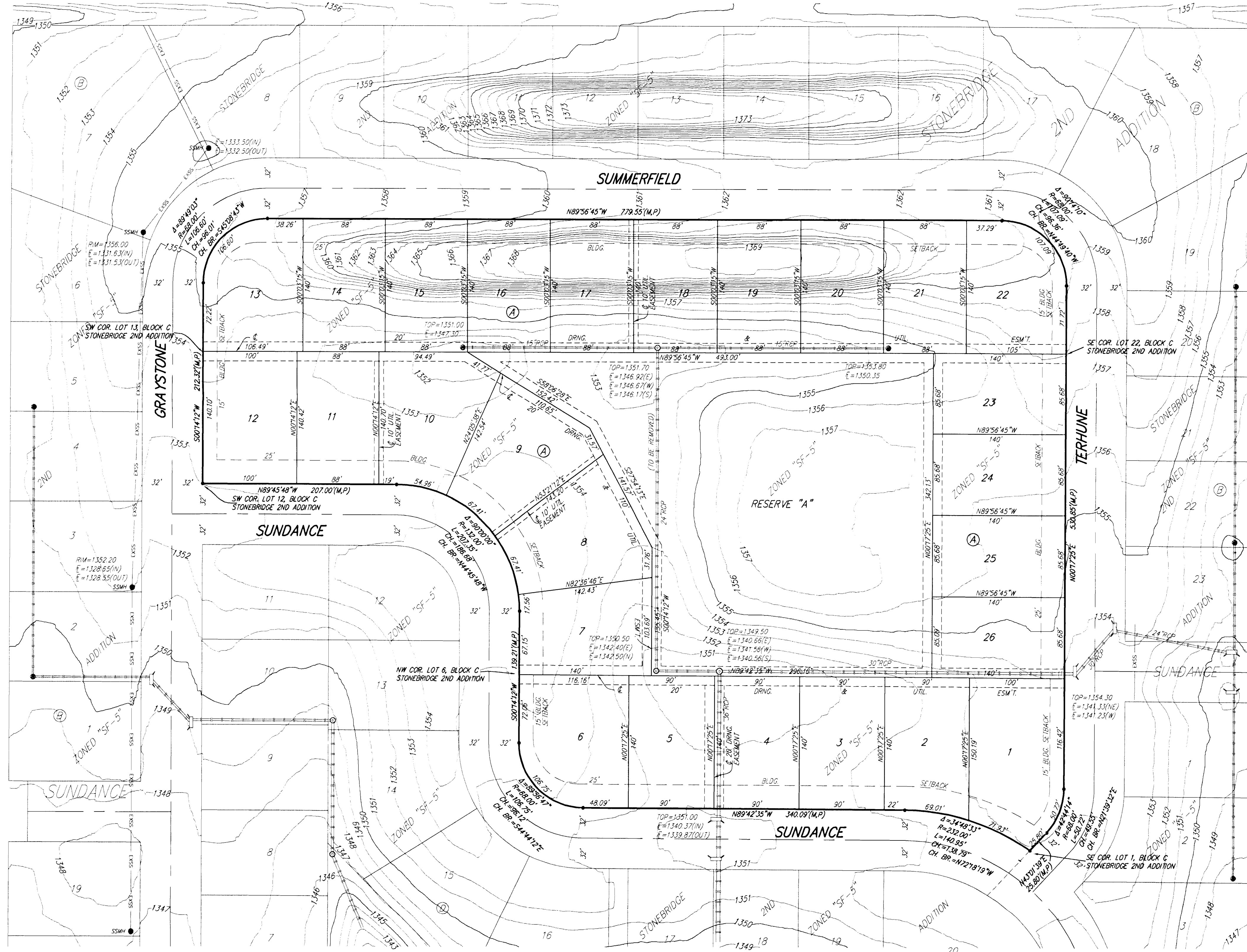


ONE-STEP FINAL PLAT
STONEBRIDGE 3RD ADDITION
WICHITA, SEDGWICK COUNTY, KANSAS



State of Kansas) SS We, Baughman Company, P.A., Surveyors in
Sedgwick County) Sedgwick County and state do hereby certify that we have surveyed and
platted "STONEBRIDGE 3RD ADDITION", Wichita, Sedgwick County, Kansas
and that the accompanying plat is a true and correct exhibit of the
property surveyed, described as all of Lots 1, 2, 3, 4, 5, 6, 7, 8, 9, 10,
11, 12, 13, 14, 15, 16, 17, 18, 19, 20, 21, 22, 23, 24, 25, 26, 27, 28, 29,
30, Block C, Stonebridge 2nd Addition, Sedgwick County, Kansas, together
with all of Terhune Ct as dedicated in said Stonebridge 2nd Addition.

Existing public easements and dedications
being vacated by virtue of K.S.A. 12-512(b).
Baughman Company, P.A.
_____, Surveyor
Michael G. Conroy

Know all men by these presents that we,
the undersigned, have caused the land in the surveyors certificate to be
platted into Lots, a Block, and a Reserve, to be known as "STONEBRIDGE
3RD ADDITION", Wichita, Sedgwick County, Kansas. The utility easements
are hereby granted as indicated for the construction and maintenance of
all public utilities. The drainage and utility easements are hereby granted
as indicated for drainage purposes and for the construction and
maintenance of all public utilities. The drainage easements are hereby
granted as indicated for drainage purposes. Reserve "A" is hereby
reserved for lakes, landscaping, open space, berms, sidewalks, drainage
purposes, and utilities as confined to easements. Reserve "A" shall be
owned and maintained by the homeowners association for the addition.
The Minimum Building Pad Elevations for the lowest opening to the
structures shall be as indicated on the face of the plat.

FLKS Land Development, LLC
a Kansas limited liability company
_____, Member
Steven R. Barrett

State of Kansas) SS The foregoing instrument acknowledged before
Sedgwick County) me, this _____ day of _____, 2011, by Steven R. Barrett, Member of
FLKS Land Development, LLC, a Kansas limited liability company, on behalf
of the limited liability company.

_____, Notary Public
My App't. Exp. _____

This plat of "STONEBRIDGE 3RD ADDITION",
Wichita, Sedgwick County, Kansas has been submitted to and approved by
the Wichita-Sedgwick County Metropolitan Area Planning Commission,
Wichita, Kansas.
Dated this _____ day of _____, 2011.
Wichita-Sedgwick County Metropolitan Area Planning Commission

_____, Chair
Debra Miller Stevens
_____, Secretary
John L. Schlegel

This plat approved and all dedications
shown hereon accepted by the City Council of the City of Wichita,
Kansas, this _____ day of _____, 2011.

_____, Mayor
Carl Brewer
_____, City Clerk
Karen Sublott

Reviewed in accordance with K.S.A. 58-2005
on this _____ day of _____, 2011.

Tricia L. Robello, L.S. #1246
Deputy County Surveyor
Sedgwick County, Kansas

Entered on transfer record this _____ day
of _____, 2011.

_____, County Clerk
Kelly B. Arnold

State of Kansas) SS This is to certify that this plat has been
Sedgwick County) filed for record in the office of the Register of Deeds, this _____ day
of _____, 2011 at _____ o'clock _____ M; and is duly recorded.

_____, Register of Deeds
Bill Meek
_____, Deputy
Tonya Buckingham

DATE OF PREPARATION: 31 JANUARY 2011
DATE OF TOPOGRAPHY: SPRING 2008
CONTIGUOUS INTERVAL: ± 1 FOOT CONTOURS
PROVIDED BY SEDGWICK COUNTY (CONVERTED
TO NGVD29 TO MATCH PREVIOUS
STONEBRIDGE 2ND ADDITION DATUM)

- = #4 REBAR W/ "BAUGHMAN" CAP (SET)
- (M) = MEASURED
- (P) = PLATTED

LOT	BLOCK	ELEVATION
2-5	A	1345.0
7-10	A	1345.0
15-21	A	1345.0
23-26	D	1345.0

BENCHMARK:
"1" CUT, TOP OF CURB, S. SIDE OF SUNDANCE AS
DEDICATED IN SAVANNAH AT CASTLE ROCK RANCH
7TH ADDITION, 25'± N. OF THE WEST LINE OF THE
SE 1/4 OF SEC. 12, TWP. 27-S, R-2-E
ELEV. = 1347.53 NGVD29

NOTE:
ALL SANITARY SEWER AND STORM WATER
SEWER INFORMATION PER PLAN AND IN
NGVD29 DATUM.

VICINITY MAP
SEC. 12, T27S, R2E

We the undersigned holders of a mortgage on the
above described property, do hereby consent to this plat of "STONEBRIDGE
3RD ADDITION", Wichita, Sedgwick County, Kansas.
Commerce Bank, N.A.
_____,
_____, (Title)

State of Kansas) SS The foregoing instrument acknowledged be-
Sedgwick County) fore me, this _____ day of _____, 2011, by _____
of Commerce Bank, N.A., on behalf of the bank.
_____, (Title)

_____, Notary Public
My App't. Exp. _____

**STONEBRIDGE 3RD
ADDITION** 31 JANUARY 2011
Baughman Company, P.A.
315 E. 10th St., Wichita, KS 67211 P 316.262.1211 F 316.262.0149
ENGINEERING | SURVEYING | PLANNING | LANDMARK ACQUISITION
PROJECTS: STONEBRIDGE 3RD ADDITION, STONEBRIDGE 2ND ADDITION, OBER DOWNS