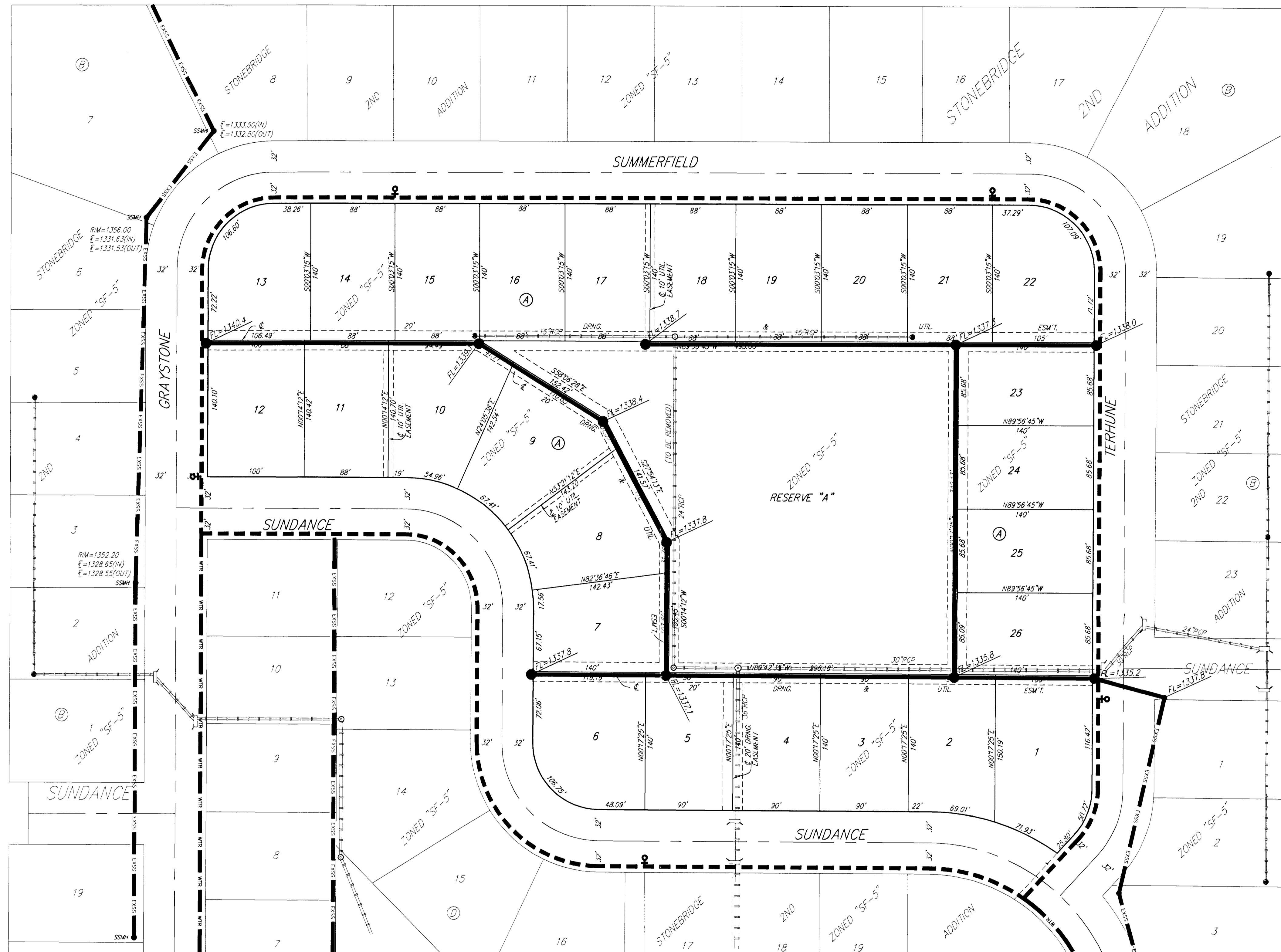


UTILITY PLAN

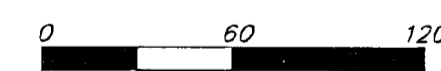
STONEBRIDGE 3RD ADDITION

WICHITA, SEDGWICK COUNTY, KANSAS

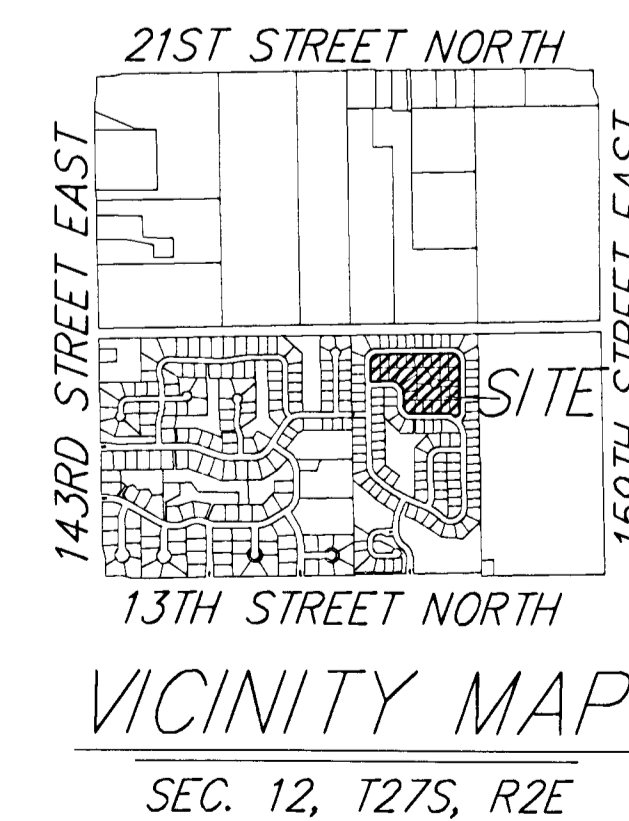


LEGEND

- Proposed Water Line (8" Unless Noted Otherwise)
- Existing Water Line (8" Unless Noted Otherwise)
- Proposed Sanitary Sewer Line (8" Unless Noted Otherwise)
- Existing Sanitary Sewer Line (8" Unless Noted Otherwise)
- Proposed Sanitary Sewer Manhole
- ♀ Proposed Fire Hydrant
- XXXXXX Proposed Sanitary Sewer Flow



DATE OF PROVISION: 31 JANUARY 2011
 DATE OF TOPOGRAPHY: SPRING 2008
 CONTOUR INTERVALS: 1 FOOT CONTIGUOUS
 PROVIDED BY: SEDGWICK COUNTY (CONVERTED TO NAD83 TO MATCH PREVIOUS STONEBRIDGE 2ND ADDITION (24 LUM))



STONEBRIDGE 3RD ADDITION

9 FEBRUARY 2011
Baughman Company, P.A.
 315 E 8th St., Wichita, KS 67211 P: 316.262.7271 F: 316.262.2149
Baughman ENGINEERING SURVEYING | PLANNING | LANDSCAPE ARCHITECTURE
 E:\PROJECTS\STONEBRIDGE3RDADD\STONEBRIDGE3RD_CSF_UP.DWG\T11W