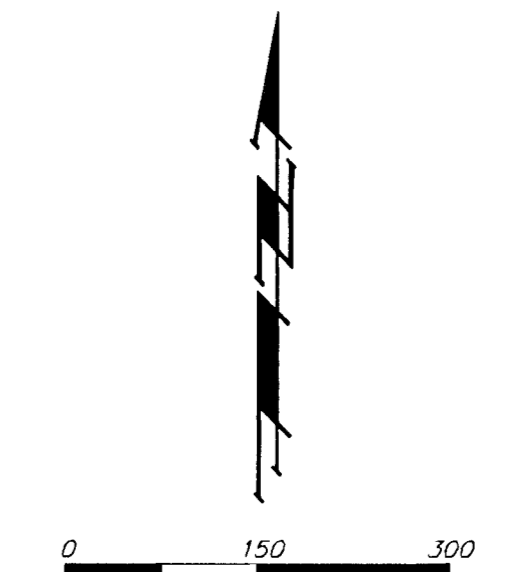


PRELIMINARY PLAT  
**SKYWAY WEST 2ND ADDITION**  
 WICHITA, SEDGWICK COUNTY, KANSAS



DATE OF PREPARATION: 28 FEBRUARY 2011  
 DATE OF TOPOGRAPHY: 15 DECEMBER 2010  
 CONTOUR INTERVALS = 1 FOOT (CONTOURS PROVIDED BY SEDGWICK COUNTY)

**OWNER:**  
 JOHN E. DUCAN FAMILY PARTNERSHIP, L.P.  
 ATTN: JOHN DUCAN  
 2418 MORNING DEW  
 WICHITA, KS 67205  
 316-721-2418

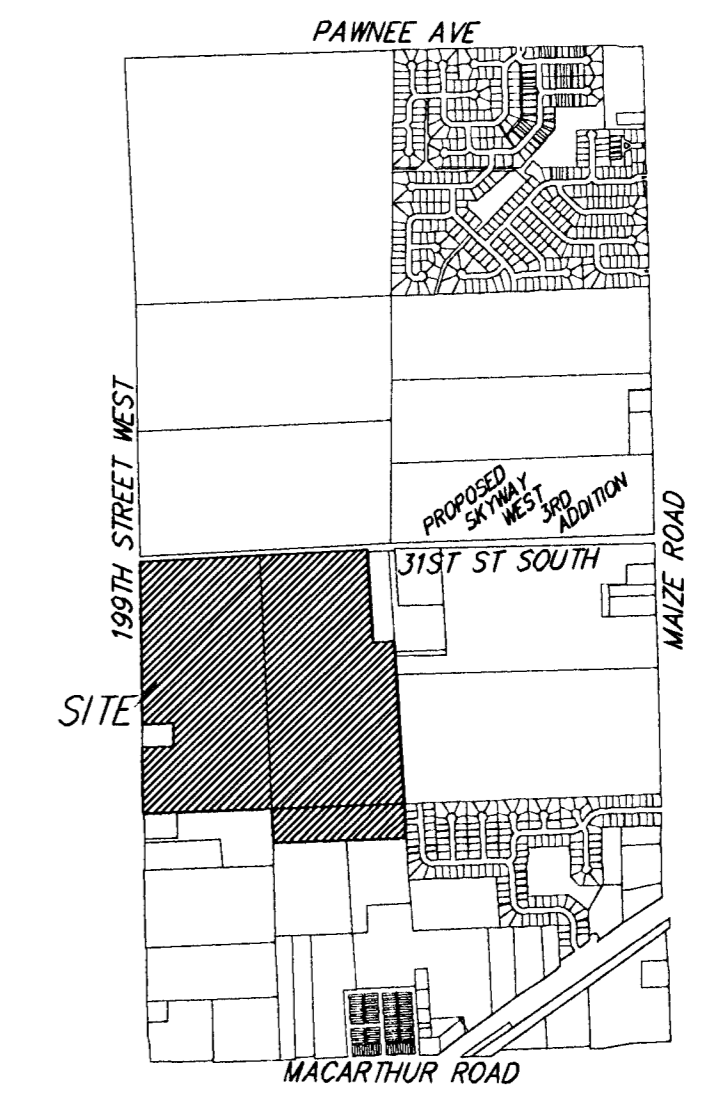
**LEGAL DESCRIPTION:**  
 THE EAST HALF OF THE NORTHWEST QUARTER OF SECTION 7, TOWNSHIP 28 SOUTH, RANGE 1 WEST OF THE SIXTH PRINCIPAL MERIDIAN, SEDGWICK COUNTY, KANSAS, EXCEPT THE EAST 220 FEET OF THE NORTH 300 FEET THEREOF, TOGETHER WITH THE WEST HALF OF THE NORTHWEST QUARTER (NW/4 NW/4) OF SECTION 7, TOWNSHIP 28 SOUTH, RANGE 1 WEST, SEDGWICK COUNTY, KANSAS, EXCEPT A TRACT BEGINNING 683.96 FEET NORTH OF THE SOUTHWEST CORNER OF SAID NORTHWEST QUARTER, THENCE NORTH 23.8 FEET, THENCE EAST 366.15 FEET, THENCE SOUTH 23.8 FEET, THENCE WEST 366.15 FEET TO BEGINNING.

**BENCHMARK:**  
 MAIZE ROAD & 31ST SOUTH-CITY OF WICHITA BENCHMARK DISC.  
 200± WEST OF INTERSECTION, SOUTHEAST CORNER OF HUBBOARD OF D.C.R.C.  
 ELEV. = 1331.82 NGVD88

RESERVES "A", "B", AND "C" ARE RESERVED FOR OPEN SPACE, LANDSCAPING, BERMS, LAKES, DRAINAGE PURPOSES, AND UTILITIES AS CONFINED TO EASEMENTS.

- FH ⊙ = Fire Hydrant
- GP ⊙ = Guy Pole
- Guy ⊙ = Guy Anchor
- MB ⊙ = Mail Box
- PM ⊙ = Pipeline Marker
- PP ⊙ = Power Pole
- Sign ⊙ = Sign
- SSM ⊙ = Sanitary Sewer Manhole
- ATT Ped ⊙ = ATT Pedestal
- WM ⊙ = Water Meter
- WV ⊙ = Water Valve

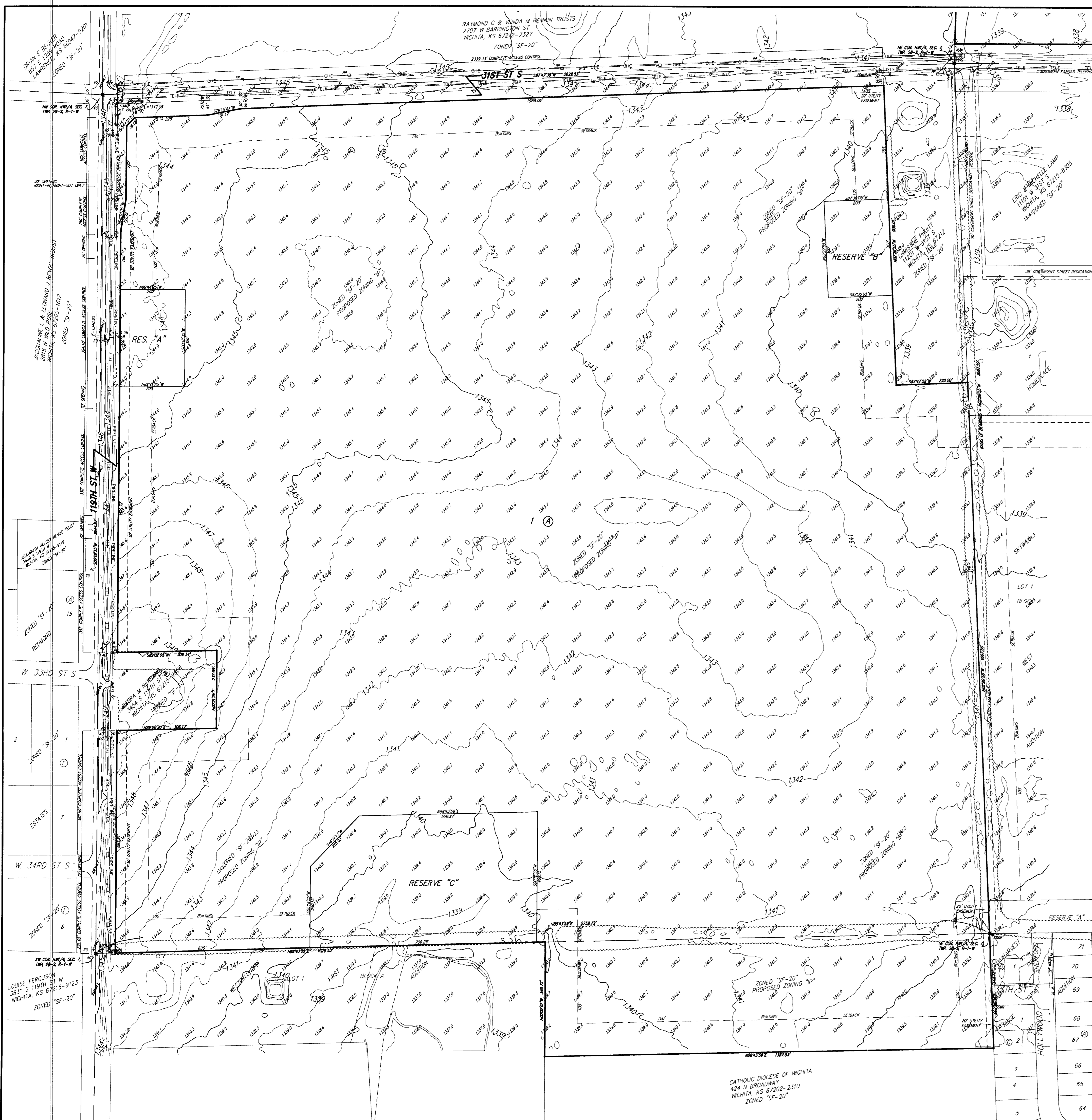
WTR	WATER LINE	WTR
AT&T	SOUTHWESTERN BELL	AT&T
GAS	GAS LINE	GAS
CoTV	Cable TV	CoTV
CoTV	CoTV	CoTV
ONE	OVERHEAD ELECTRIC LINE	ONE
EXSS	SANITARY SEWER	EXSS
EXSS	EXSS	EXSS
PIPELINE	PIPELINE	PIPELINE



VICINITY MAP  
 SEC. 6, T28S, R1W  
 SEC. 7, T28S, R1W

**SKYWAY WEST 2ND ADDITION**

28 FEBRUARY 2011  
**Baughman Company, P.A.**  
 315 5th St., Wichita, KS 67211 P 316-262-7271 F 316-262-0149  
 Baughman ENGINEERING | SURVEYING | PLANNING | LANDSCAPE ARCHITECTURE  
 E:\PROJECTS\SKYWAYWEST2ND\SKYWAYINDANDIRD.PDWG.RAR



CATHOLIC DIOCESE OF WICHITA  
 424 N BROADWAY  
 WICHITA, KS 67202-2310  
 ZONED "SF-20"

# SKYWAY WEST 2ND ADDITION WICHITA, SEDGWICK COUNTY, KANSAS

State of Kansas) SS  
Sedgwick County) We, Baughman Company, P.A., Surveyors in  
aforesaid county and state do hereby certify that we have surveyed and  
platted "SKYWAY WEST 2ND ADDITION", Wichita, Sedgwick County, Kansas  
and that the accompanying plot is a true and correct exhibit of the  
property surveyed, described as the east half of the Northwest Quarter of  
Section 7, Township 28 South, Range 1 West of the Sixth Principal  
Meridian, Sedgwick County, Kansas; EXCEPT the East 220 feet of the  
north 990 feet thereof, TOGETHER with the west half of the Northwest  
Quarter of Section 7, Township 28 South, Range 1 West of the 6th P.M.,  
Sedgwick County, Kansas, EXCEPT that part described as beginning at a  
point on the west line of said NW1/4, 683.96 feet north of the southwest  
corner thereof; thence north on said west line 238 feet; thence east at  
an interior angle of 91°18', 366.15 feet; thence south at an interior angle  
88°42', 238 feet; thence west 366.15 feet to the point of beginning,  
TOGETHER with the north 349.65 feet of the east half of the Southwest  
Quarter of Section 7, Township 28 South, Range 1 West of the 6th P.M.,  
Sedgwick County, Kansas.

This plot of "SKYWAY WEST 2ND ADDITION",  
Wichita, Sedgwick County, Kansas has been submitted to and approved by  
the Wichita-Sedgwick County Metropolitan Area Planning Commission,  
Wichita, Kansas.  
Dated this \_\_\_\_\_ day of \_\_\_\_\_, 2011.  
Wichita-Sedgwick County Metropolitan Area Planning Commission

\_\_\_\_\_, Chair  
Shawn Farney

\_\_\_\_\_, Secretary  
John L. Schlegel

Existing public easements and dedications  
being vacated by virtue of K.S.A. 12-512(b).

Baughman Company, P.A.

\_\_\_\_\_, Surveyor  
Michael G. Conrey

This plat approved and all dedications  
shown hereon accepted by the City Council of the City of Wichita,  
Kansas, this \_\_\_\_\_ day of \_\_\_\_\_, 2011.

\_\_\_\_\_, Mayor  
Carl Brewer

\_\_\_\_\_, City Clerk  
Karen Sublett

Reviewed in accordance with K.S.A. 58-2005  
on this \_\_\_\_\_ day of \_\_\_\_\_, 2011.

\_\_\_\_\_,  
Tricia L. Robello, L.S. #1246  
Deputy County Surveyor  
Sedgwick County, Kansas

John E. Dugan Family Partnership, L.P.

\_\_\_\_\_, Partner  
John E. Dugan

Entered on transfer record this \_\_\_\_\_ day  
of \_\_\_\_\_, 2011.

State of Kansas) SS  
Sedgwick County) The foregoing instrument acknowledged before  
me, this \_\_\_\_\_ day of \_\_\_\_\_, 2011, by John E. Dugan, Partner of the  
John E. Dugan Family Partnership, L.P., on behalf of the limited partnership.

\_\_\_\_\_, County Clerk  
Kelly B. Arnold

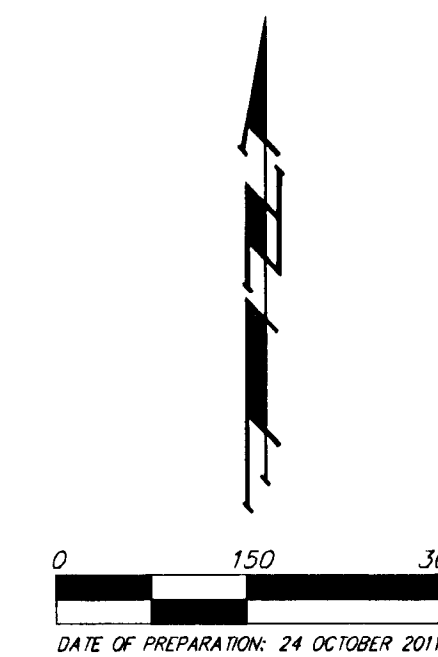
My App'l. Exp. \_\_\_\_\_

\_\_\_\_\_, Notary Public

State of Kansas) SS This is to certify that this plat has been  
Sedgwick County) filed for record in the office of the Register of Deeds, this \_\_\_\_\_ day  
of \_\_\_\_\_, 2011 at \_\_\_\_\_ o'clock \_\_\_\_\_ M., and is duly recorded.

\_\_\_\_\_, Register of Deeds  
Bill Meek

\_\_\_\_\_, Deputy  
Tonya Buckingham



MINIMUM BUILDING PAD ELEVATIONS FOR LOWEST OPENING TO THE STRUCTURES		
LOT	BLOCK	ELEVATION
		NAVD88
1	A	1345.0

• = #4 REBAR W/ "BAUGHMAN" CAP (SET)  
x = 1/4" IRON (FOUND)  
o = 1" IRON (FOUND)  
□ = 1" IRON PIPE IN THIMBLE (FOUND)  
(M) = MEASURED  
(D) = DESCRIBED  
(P) = PLATTED

BENCHMARK:  
MALE ROAD & 31ST SOUTH-CITY OF WICHITA  
BENCHMARK DISC 200'± WEST OF INTERSECTION  
SOUTHEAST CORNER OF HUBGUARD OF R.C.B.C.  
ELEV. = 1331.82 NGVD88

NOTE:  
A drainage plan has been developed for this subdivision  
and is on file with the City of Wichita, Kansas. Drainage  
intent shall remain as depicted or as modified with the  
approval of the City Engineer of the City of Wichita,  
Kansas. No obstructions which impede the flow of this  
drainage plan shall be allowed.

TO: 1-71 FROM: 1-101  
PUBLIC WORKS ENGINEERING  
Jufanne Kallman  
Plats for the 1108/11 Subdivision Meeting)

## SKYWAY WEST 2ND ADDITION

24 OCTOBER 2011

**Baughman Company, P.A.**  
315 Ella St. Wichita, KS 67211 P 316-262-7271 F 316-262-0149

ENGINEERING | SURVEYING | PLANNING | LANDSCAPE ARCHITECTURE

E:\PROJECTS\SKYWAYWEST2ND\SKYWAY2ND\AND11RD.PDWGRK

